

# EAO – Your Expert Partner for Human Machine Interfaces

## 84-902B - E-stop protective shroud

### 84-902B - E-stop protective shroud



*Attention: The preview is based on a sample product. This can differ from your current configuration.*

#### Mounting

Mounting cut-out  $\varnothing$  22.5 mm

#### Other Attributes

Marking EMERGENCY STOP  
Weight 0.006 kg  
Dimension  $\varnothing$  50 mm  
Material Plastic  
Colour yellow

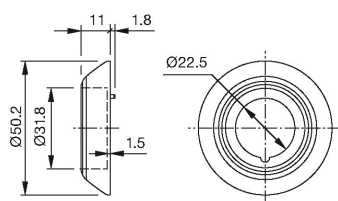
#### IP-Rating

Front protection IP 65

# EAO – Your Expert Partner for Human Machine Interfaces

84-902B - E-stop protective shroud

## Dimensions



## Additional information

Front panel thickness 1 ... 3 mm

With anti-twist device

When using a protective shroud the e-stop or stop switch has to be turned by 180° to be mounted. See dimensional drawing