

# PN Series Alternate & Momentary Action Pushbutton Switches



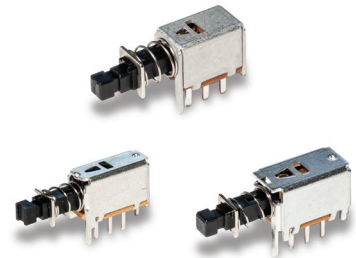
A  
Pushbutton

## Features/Benefits

- **Momentary or locking action**
- **Different actuation forces for customized feel**
- **Low cost, reliable contact design**
- **Single and double pole options**
- **RoHS compliant**

## Typical Applications

- **Computers and peripherals**
- **Instrumentation and measurement equipment**
- **Non-power, on-off switch applications**



## Specifications

CONTACT RATING: 0.2 AMP @ 30 V DC max.  
ELECTRICAL LIFE: 10,000 make-and-break cycles at full load.  
MECHANICAL LIFE: 10,000 on/off cycles.  
CONTACT RESISTANCE: 30 mΩ max. initial  
INSULATION RESISTANCE: 100 MΩ min.  
DIELECTRIC STRENGTH: 500 V AC min.  
OPERATING/STORAGE TEMPERATURES: -10°C to 60°C.  
PACKAGING: Switches are supplied in anti-static trays.

## Materials

FRAME: Tin plated steel.  
ACTUATOR: PA 66 black.  
BASE: Phenolic resin.  
TERMINALS: Silver plated brass.  
MOVABLE CONTACTS: Silver plated phosphor bronze.  
RETURN SPRING: SWC  
DETENT SPRING: Phosphor bronze.  
DETENT SPRING PLATE: Phosphor bronze.  
RETURN SPRING RETAINER RING: Nickel plated steel.  
TERMINAL SEAL: Epoxy.

## Build-A-Switch

To order, simply select desired option from each category and place in the appropriate box. For additional options not shown in catalog, consult Customer Service Center.

<b>P</b>	<b>N</b>							<b>0</b>	<b>3</b>	<b>Q</b>	<b>E</b>
											Terminal Seal
											Contact Material
											Frame
											Shorting/ Non-Shorting
											Actuator*
											Actuation Force**
											Function
											SPDT Mom.
											SPDT Locking
											DPDT Mom.
											DPDT Locking
											2.8 mm square tip
											3.3 mm x 3.2 mm tip
											50 g Typ
											100 g Typ
											180 g Typ
											250 g Typ
											100 g Typ
											250 g Typ
											350 g Typ
											Non-shorting
											Shorting

\* Note - The switch body style dimensions differ for each of these 3 groupings

"S" actuator available for PN 11 & PN 12 options

"S" actuator available for PN 21 & PN 22 options

"L" actuator available for PN 21 & PN 22 options

\*\* Actuation Force "A" only available with PN11 with "S" actuator

PN 11 & PN 21 available with Actuation Force "B", "D", "E", "F", "H", "J"

PN 12 & PN 22 available with Actuation Force "D", "E", "H", "J"

Full travel



Specifications and dimensions subject to change

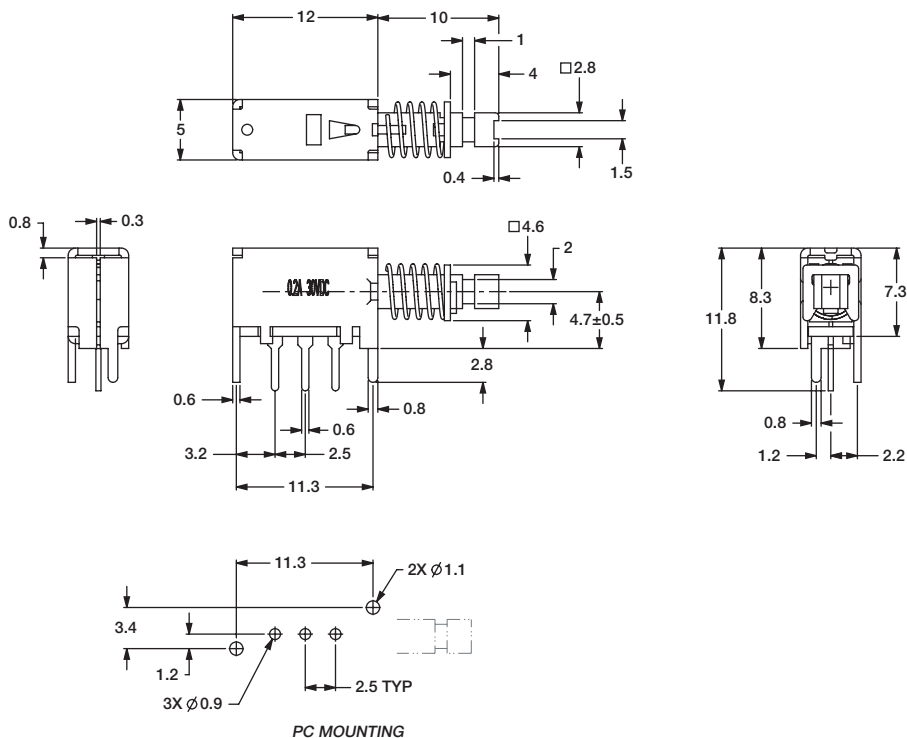


# PN Series Alternate & Momentary Action Pushbutton Switches

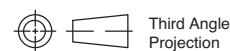
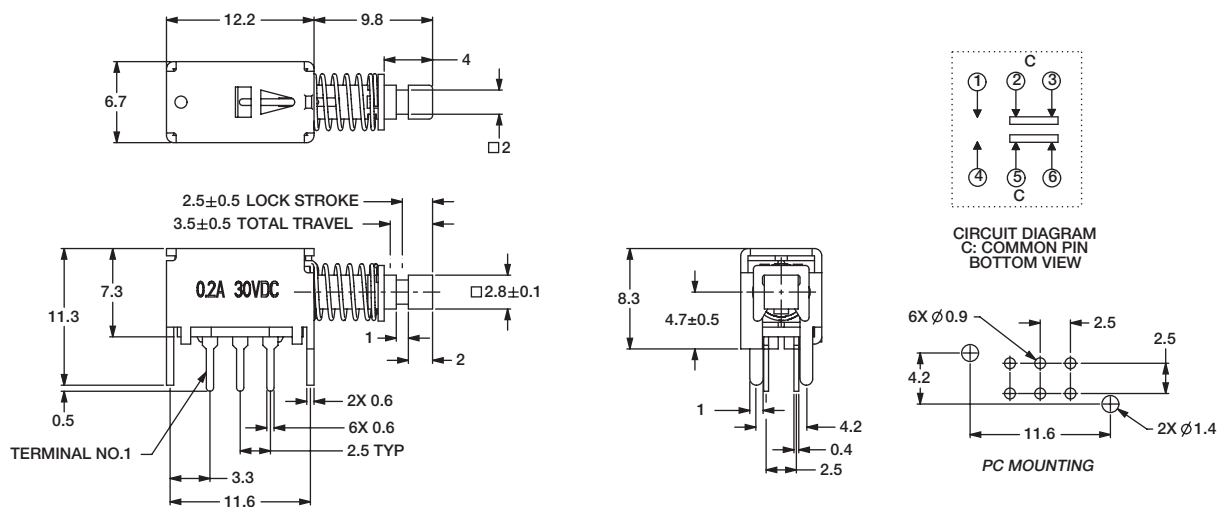
A

Pushbutton

**PN 11** SPDT Mom.  
**PN 12** SPDT Locking



**PN 21** DPDT Mom. with "S" Actuator  
**PN 22** DPDT Locking with "S" Actuator



Third Angle  
Projection

Dimensions are shown: mm  
Specifications and dimensions subject to change

**C&K**

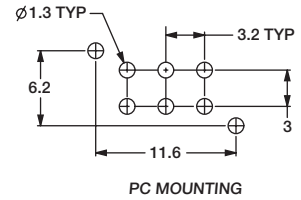
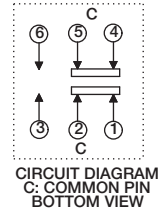
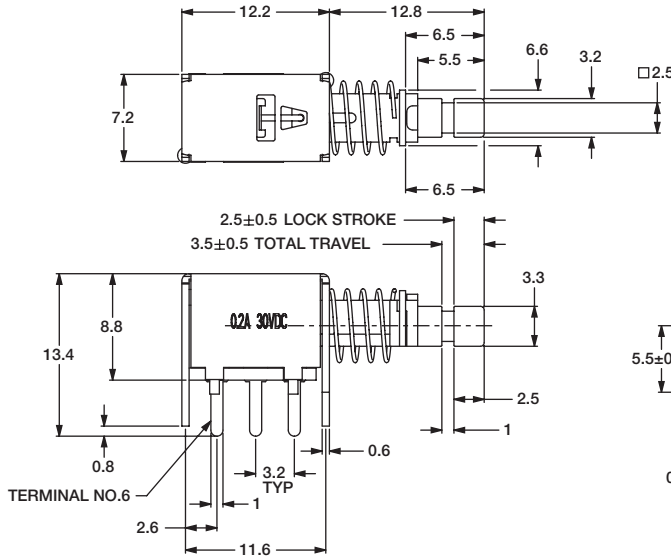
# PN Series Alternate & Momentary Action Pushbutton Switches



A

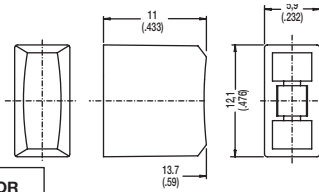
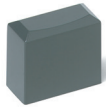
Pushbutton

**PN 21** DPDT Mom. with "L" Actuator  
**PN 22** DPDT Locking with "L" Actuator



BUTTONS MUST BE ORDERED SEPARATELY. SHIPPED IN BULK.

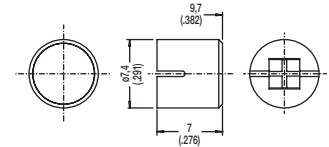
**PE**



OPTION CODE	COLOR
<b>RD</b>	Red
<b>GY</b>	Gray
<b>BK</b>	Black
<b>WH</b>	White

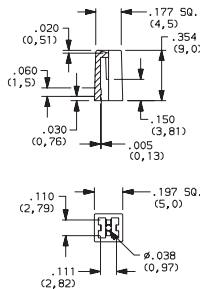
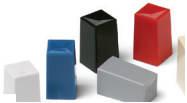
PE and PV buttons fit "L" actuators

**PV**



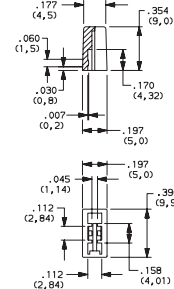
## Indexed

**G001A** Black  
**G001G** Gray  
**G001I** Ivory  
**G001R** Red



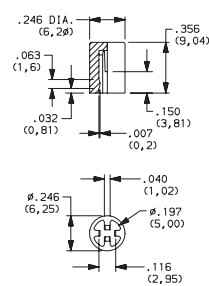
## Rectangular

**G002A** Black  
**G002G** Gray  
**G002I** Ivory  
**G002R** Red



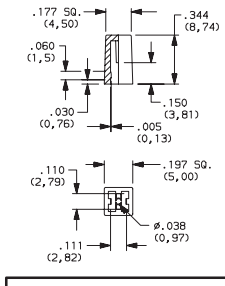
## Round

**G003A** Black  
**G003G** Gray  
**G003I** Ivory  
**G003R** Red

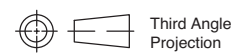


## Square

**G004A** Black  
**G004G** Gray  
**G004I** Ivory  
**G004R** Red



G001, G002, G003 and G004 buttons fit "S" actuators



**C&K**

Dimensions are shown: Inches (mm)  
Specifications and dimensions subject to change

www.ckswitches.com