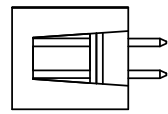
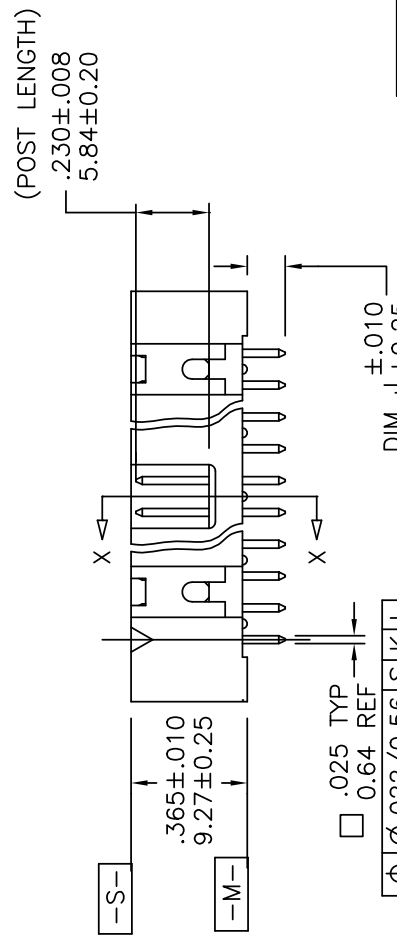
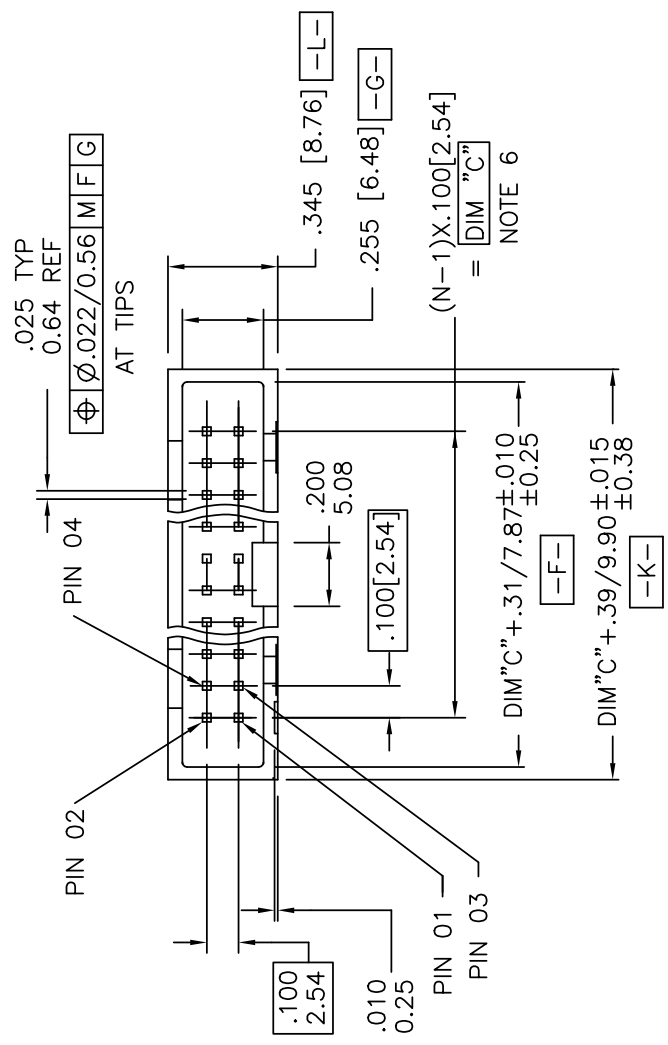
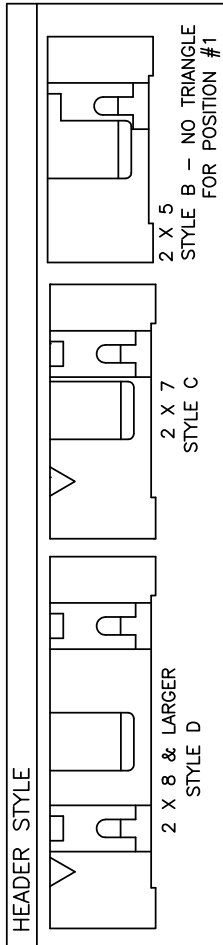


PRODUCT NUMBER
SEE TABLE



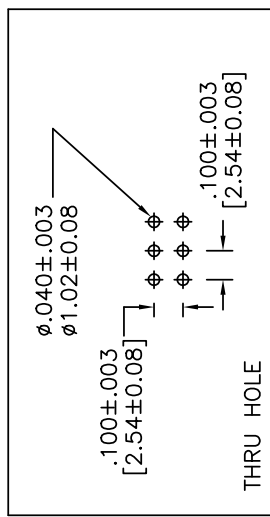
mat'l. code		surface / tolerance		projection		product family	
		ISO 1302 / ISO 101		ISO 101		QUICKIE	
title		tolerances unless otherwise specified		INCH/MM		HEADER, QUICKIE, SLIM LINE VERTICAL, 4-WALL	
H N05-0123 ZC 5/9/05		linea		scale 2:1		dwg no 88880	
J N07-0151 WG 8/02/07		angles		sheet of 10 size		A3	
K Bx-w-012008 J.Z. 2012-07-04		±2°		type Product Customer Drawing			
		dr M. CLOUSER 7/11/90		FCI			
		engt M. SMYK 7/11/90					
		chr M. SMYK 8/21/91					
		appd M. SMYK 8/21/91					
sheet revision		K	K	K	K	K	K
index sheet		1	2	3	4	5	6

PRODUCT NUMBER
SEE TABLE



NOTES:

1. SAME POSITION TOLERANCE APPLIES TO BOTH ENDS OF PINS.
2. MOLDING MATERIAL: GLASS-FILLED POLYESTER, FLAME RETARDANT PER UL 94 V-0, COLOR: BLACK.
3. 1" MAX. DRAFT PERMISSIBLE ON ALL SURFACES.
4. 3 LBS./1.36 KG MIN. TERMINAL PULL-OUT FORCE.
5. TERMINAL MATERIAL: PHOSPHORUS BRONZE.
6. TO DETERMINE DIMENSIONS:
N = NUMBER OF POSITIONS PER ROW
7. SEE 68751 FOR LATCHES.
8. PART NUMBERS WITH "R" FOLLOWING THE PART NUMBER (EXAMPLE 66506-326 R) HAS RETENTION.
(ONLY PARTS WITH .105, .120 AND .150 ROUND OR SQUARE TAILS CAN HAVE RETENTION.) LOCATION IS MANUFACTURERS OPTION.
FOR CONNECTORS:
RETENTIVE LEG APPLICABLE TO TAIL LENGTHS .125/3.18 MAX. 5LB/2.3KG MAX INSERTION FORCE AND .25LB/.1KG MIN RETENTION FORCE PER RETENTIVE PIN USING .062/1.57 THICK CIRCUIT BOARD AND RECOMMENDED HOLE PATTERN. RETENTIVE LOCATION AT THE DISCRETION OF THE MANUFACTURER. RETENTION PIN MAY BE SHIFTED TO NEXT POSITION.
9. PART NUMBERS WITH "T" FOLLOWING PART NUMBER (EXAMPLE 66506-068 T IS PACKED IN TUBES.) (CALL PRODUCT MANAGER FOR AVAILABILITY.)
10. MAY BE ORDERED WITH "G" PACK PACKAGING BY ADDING "G" TO DASH NUMBER.
11. UNDER PLATING: 50µ"/1.27µm Ni.
12. ADD "LF" SUFFIX AT THE END OF PART NUMBER FOR LEAD FREE OPTION & PART NUMBERS WITH "LF" SUFFIX ADDED IN THE TABLE ARE LEAD FREE.
13. IF "LF" P/N THE PRODUCT MEETS EUROPEAN UNION DIRECTIVES AND OTHER COUNTRY REGULATION AS DESCRIBED IN GS-22-008.
14. THE HOUSING WILL WITHSTAND EXPOSURE TO 260°C PEAK TEMPERATURE FOR 15 SECONDS IN A WAVE SOLDER APPLICATION WITH A 1.57mm MINIMUM THICK CIRCUIT BOARD. SEE APPLICATION NOTES/PROCEDURES IF THEY ARE AVAILABLE.
15. THIS PRODUCT HAS 100% TIN PLATING IN THE INTERFACE AND HAS NOT BEEN TESTED FOR WHISKER GROWTH IN ALL INTERCONNECT ENVIRONMENTS."
16. PLATING OPTIONS:
PERFORMANCE PLATING WILL BE EITHER GOLD OR GXT ON CONTACT OR TAIL, OPTIONALLY TIN ON TAIL.



mat'l. code		surface / tolerance		projection		product family	
ISO 1302		ISO 406 / ISO 101		ISO 101		QUICKIE	
date		tolerances unless otherwise specified		title			
		angles		INCH/MM		HEADER, QUICKIE, SLIM LINE	
		line		scale 1:1		VERTICAL, 4-WALL	
		dr		M. CLOUSER		dwg no 88880 sheet 2 of 10 size A3	
		enfr		M. SMYK		88880	
		chr		M. SMYK		Product Customer Drawing	
		appd		M. SMYK		8/21/91	
sheet		revision					
index		sheet					

PRODUCT NO. NOTE 8 & 9	SIZE	STYLE	DIM C	DIM J	PIN PLATING	PLASTIC MATERIAL	1		2		3		4		5		6	
88880-001	2 X 5	B	.400/10.16	.105/2.67	30u"/0.76u MIN <NOTE 16> OVER 50u"/1.27u NI	NOTE 2												
-002				.150/3.81	30u"/0.76u MIN <NOTE 16> OVER 50u"/1.27u NI													
-003				.675/17.15	30u"/0.76u MIN <NOTE 16> OVER 50u"/1.27u NI													
-004				.105/2.67	150u"/3.81u TIN													
-005				.150/3.81	150u"/3.81u TIN													
-006	2 X 5	B	.400/10.16	.675/17.15	30u"/0.76u MIN <NOTE 16> OVER 50u"/1.27u NI													
-007	2 X 10	D	.900/22.86	.105/2.67	30u"/0.76u MIN <NOTE 16> OVER 50u"/1.27u NI													
-008				.150/3.81	30u"/0.76u MIN <NOTE 16> OVER 50u"/1.27u NI													
-009				.675/17.15	30u"/0.76u MIN <NOTE 16> OVER 50u"/1.27u NI													
-010				.105/2.67	150u"/3.81u TIN													
-011				.150/3.81	150u"/3.81u TIN													
-012	2 X 10		.900/22.86	.675/17.15	30u"/0.76u MIN <NOTE 16> OVER 50u"/1.27u NI													
-013	2 X 13		1.200/30.48	.105/2.67	30u"/0.76u MIN <NOTE 16> OVER 50u"/1.27u NI													
-014				.150/3.81	30u"/0.76u MIN <NOTE 16> OVER 50u"/1.27u NI													
-015				.675/17.15	30u"/0.76u MIN <NOTE 16> OVER 50u"/1.27u NI													
-016				.105/2.67	150u"/3.81u TIN													
-017				.150/3.81	150u"/3.81u TIN													
-018	2 X 13		1.200/30.48	.675/17.15	30u"/0.76u MIN <NOTE 16> OVER 50u"/1.27u NI													
-019	2 X 17		1.600/40.64	.105/2.67	30u"/0.76u MIN <NOTE 16> OVER 50u"/1.27u NI													
-020				.150/3.81	30u"/0.76u MIN <NOTE 16> OVER 50u"/1.27u NI													
-021				.675/17.15	30u"/0.76u MIN <NOTE 16> OVER 50u"/1.27u NI													
-022				.105/2.67	150u"/3.81u TIN													
-023				.150/3.81	150u"/3.81u TIN													
-024	2 X 17		1.600/40.64	.675/17.15	30u"/0.76u MIN <NOTE 16> OVER 50u"/1.27u NI													
-025	2 X 20		1.900/48.26	.105/2.67	30u"/0.76u MIN <NOTE 16> OVER 50u"/1.27u NI													
-026				.150/3.81	30u"/0.76u MIN <NOTE 16> OVER 50u"/1.27u NI													
-027				.675/17.15	30u"/0.76u MIN <NOTE 16> OVER 50u"/1.27u NI													
-028				.105/2.67	150u"/3.81u TIN													
-029				.150/3.81	150u"/3.81u TIN													
-030	2 X 20		1.900/48.26	.675/17.15	30u"/0.76u MIN <NOTE 16> OVER 50u"/1.27u NI													
-031	2 X 25		2.400/60.96	.105/2.67	30u"/0.76u MIN <NOTE 16> OVER 50u"/1.27u NI													
-032				.150/3.81	30u"/0.76u MIN <NOTE 16> OVER 50u"/1.27u NI													
-033				.675/17.15	30u"/0.76u MIN <NOTE 16> OVER 50u"/1.27u NI													
-034				.105/2.67	150u"/3.81u TIN													
88880-035	2 X 25	D	2.400/60.96	.150/3.81	150u"/3.81u TIN	NOTE 2												

mat'l. code	surface	tolerance	projection	product family
ISO 1302	ISO 1101	ISO 1101	ISO 1101	QUICKIE
tolerances unless otherwise specified	angles	linea	INCH/MM	title
	±2°	XXXX/000/XXXX/061	scale 1:1	HEADER, QUICKIE, SLIM LINE VERTICAL, 4-WALL
dr	M. CLOUSER	7/11/90	dwg no	sheet of 10 size
enfr	M. SMYK	7/11/90	88880	A3
chr	M. SMYK	8/21/91	type	Product Customer Drawing
appd	M. SMYK	8/21/91		
sheet index	revision	sheet		

PRODUCT NO. NOTE 8 & 9	SIZE	STYLE	DIM C	DIM J	PIN PLATING	PLASTIC MATERIAL
88880-071	2 X 8	D	.700/17.78	.675/17.15	30µ / 0.76µ MIN (NOTE 16) OVER 50µ / 1.27µ NI	NOTE 2
-072	2 X 10		.900/22.86	.105/2.67		
-073	2 X 10		.900/22.86	.675/17.15		
-074	2 X 13		1.200/30.48	.105/2.67		
-075	2 X 13		1.200/30.48	.675/17.15		
-076	2 X 17		1.600/40.64	.105/2.67		
-077	2 X 17		1.600/40.64	.675/17.15		
-078	2 X 20		1.900/48.26	.105/2.67		
-079	2 X 20		1.900/48.26	.675/17.15		
-080	2 X 25		2.400/60.96	.105/2.67		
-081	2 X 25	D	2.400/60.96	.675/17.15	30µ / 0.76µ MIN (NOTE 16) OVER 50µ / 1.27µ NI	
-082	2 X 5	B	.400/10.16	.105/2.67	15µ / 0.38µ MIN (NOTE 16) OVER 50µ / 1.27µ NI	
-083	2 X 5	B	.400/10.16	.150/3.81		
-084	2 X 5	B	.400/10.16	.675/17.15		
-085	2 X 7	C	.600/15.24	.105/2.67		
-086	2 X 7	C	.600/15.24	.150/3.81		
-087	2 X 7	C	.600/15.24	.675/17.15		
-088	2 X 8	D	.700/17.78	.105/2.67		
-089	2 X 8		.700/17.78	.150/3.81		
-090	2 X 8		.700/17.78	.675/17.15		
-091	2 X 10		.900/22.86	.105/2.67		
-092	2 X 10		.900/22.86	.150/3.81		
-093	2 X 10		.900/22.86	.675/17.15		
-094	2 X 13		1.200/30.48	.105/2.67		
-095	2 X 13		1.200/30.48	.150/3.81		
-096	2 X 13		1.200/30.48	.675/17.15		
-097	2 X 17		1.600/40.64	.105/2.67		
-098	2 X 17		1.600/40.64	.150/3.81		
-099	2 X 17		1.600/40.64	.675/17.15		
-100	2 X 20		1.900/48.26	.105/2.67		
-101	2 X 20		1.900/48.26	.150/3.81		
-102	2 X 20		1.900/48.26	.675/17.15		
-103	2 X 25		2.400/60.96	.105/2.67		
-104	2 X 25		2.400/60.96	.150/3.81		
88880-105	2 X 25	D	2.400/60.96	.675/17.15	15µ / 0.38µ MIN (NOTE 16) OVER 50µ / 1.27µ NI	NOTE 2

mat'l. code	surface / tolerance	projection	product family
tech nodr	ISO 1302 / ISO 406 / ISO 101	1st angle	QUICKIE
K	tolerances unless otherwise specified	INCH/MM	title
	angles	scale 1:1	HEADER, QUICKIE, SLIM LINE
	line		VERTICAL, 4-WALL
	±2'		dwg no 88880
	dr M. CLOUSER 7/11/90		sheet 5 of 10 size A3
	enfr M. SMYK 7/11/90		type Product Customer Drawing
	chr M. SMYK 8/21/91		
	appd M. SMYK 8/21/91		
sheet index	revision		
	sheet		

PRODUCT NO. NOTE 8 & 9	SIZE	STYLE	DIM C	DIM J	PIN PLATING	PLASTIC MATERIAL
88880-106	2 X 30	D	2.900/73.66	.105/2.67	15u"/0.38u MIN (NOTE 16) OVER 50u"/1.27u NI	NOTE 2
-107	2 X 30	D	2.900/73.66	.150/3.81	15u"/0.38u MIN (NOTE 16) OVER 50u"/1.27u NI	
-108	2 X 30	D	2.900/73.66	.675/17.15	15u"/0.38u MIN (NOTE 16) OVER 50u"/1.27u NI	
-109	2 X 5	B	.400/10.16	.105/2.67	30u"/0.76u MIN (NOTE 16) OVER 50u"/1.27u NI	
-110				.150/3.81	30u"/0.76u MIN (NOTE 16) OVER 50u"/1.27u NI	
-111				.675/17.15	30u"/0.76u MIN (NOTE 16) OVER 50u"/1.27u NI	
-112				.105/2.67	150u"/3.81u TIN	
-113				.150/3.81	150u"/3.81u TIN	
-114				.675/17.15	150u"/3.81u TIN	
-115				.105/2.67	15u"/0.38u MIN (NOTE 16) OVER 50u"/1.27u NI	
-116				.150/3.81	15u"/0.38u MIN (NOTE 16) OVER 50u"/1.27u NI	
-117				.675/17.15	15u"/0.38u MIN (NOTE 16) OVER 50u"/1.27u NI	
-118				.105/2.67	30u"/0.76u MIN (NOTE 16) OVER 50u"/1.27u NI	
-119				.150/3.81	30u"/0.76u MIN (NOTE 16) OVER 50u"/1.27u NI	
88880-120	2 X 5	B	.400/10.16	.675/17.15	30u"/0.76u MIN (NOTE 16) OVER 50u"/1.27u NI	NOTE 2
88880-121						
THRU						
88880-216						
88880-217	2 X 12	D	1.100/27.94	.105/2.67	15u"/0.38u MIN (NOTE 16) OVER 50u"/1.27u NI	NOTE 2
-218					30u"/0.76u MIN (NOTE 16) OVER 50u"/1.27u NI	
-219					30u"/0.76u MIN (NOTE 16) OVER 50u"/1.27u NI	
-220				.105/2.67	150u"/3.81u TIN	
-221				.150/3.81	15u"/0.38u MIN (NOTE 16) OVER 50u"/1.27u NI	
-222					30u"/0.76u MIN (NOTE 16) OVER 50u"/1.27u NI	
-223					30u"/0.76u MIN (NOTE 16) OVER 50u"/1.27u NI	
-224				.150/3.81	150u"/3.81u TIN	
-225				.675/17.15	15u"/0.38u MIN (NOTE 16) OVER 50u"/1.27u NI	
-226					30u"/0.76u MIN (NOTE 16) OVER 50u"/1.27u NI	
-227					30u"/0.76u MIN (NOTE 16) OVER 50u"/1.27u NI	
-228	2 X 12		1.100/27.94	.675/17.15	150u"/3.81u TIN	
-229	2 X 15		1.400/35.56	.105/2.67	15u"/0.38u MIN (NOTE 16) OVER 50u"/1.27u NI	
-230					30u"/0.76u MIN (NOTE 16) OVER 50u"/1.27u NI	
-231					30u"/0.76u MIN (NOTE 16) OVER 50u"/1.27u NI	
-232				.105/2.67	150u"/3.81u TIN	
88880-233	2 X 15	D	1.400/35.56	.150/3.81	15u"/0.38u MIN (NOTE 16) OVER 50u"/1.27u NI	NOTE 2

DISCONTINUED

mat'l. code	surface / tolerance	projection	product family
tech naddr	ISO 1302 / ISO 406 / ISO 101		QUICKIE
date	tolerances unless otherwise specified		title
	angles	INCH/MM	HEADER, QUICKIE, SLIM LINE
	linea	scale 1:1	VERTICAL, 4-WALL
	±2"		dwg no 88880 sheet 6 of 10 size A3
	dr M. CLOUSER 7/11/90		type Product Customer Drawing
	engr M. SMYK 7/11/90		
	chr M. SMYK 8/21/91		
	appd M. SMYK 8/21/91		
sheet revision			
index sheet			

PRODUCT NO. NOTE 8 & 9	SIZE	STYLE	DIM C	DIM J	PIN PLATING	PLASTIC MATERIAL
88880-234	2 X 15	D	1. 400/35.56	. 150/3.81	30u"/O. 76u MIN (NOTE 16) OVER 50u"/1. 27u NI	NOTE 2
-235				. 150/3.81	30u"/O. 76u MIN (NOTE 16) OVER 50u"/1. 27u NI	
-236				. 150/3.81	150u"/3.81u TIN	
-237				. 675/17.15	15u"/O. 38u MIN (NOTE 16) OVER 50u"/1. 27u NI	
-238					30u"/O. 76u MIN (NOTE 16) OVER 50u"/1. 27u NI	
-239					30u"/O. 76u MIN (NOTE 16) OVER 50u"/1. 27u NI	
-240	2 X 15		1. 400/35.56	. 675/17.15	150u"/3.81u TIN	
-241	2 X 22		2. 100/53.34	. 105/2.67	15u"/O. 38u MIN (NOTE 16) OVER 50u"/1. 27u NI	
-242					30u"/O. 76u MIN (NOTE 16) OVER 50u"/1. 27u NI	
-243					30u"/O. 76u MIN (NOTE 16) OVER 50u"/1. 27u NI	
-244				. 105/2.67	150u"/3.81u TIN	
-245				. 150/3.81	15u"/O. 38u MIN (NOTE 16) OVER 50u"/1. 27u NI	
-246					30u"/O. 76u MIN (NOTE 16) OVER 50u"/1. 27u NI	
-247					30u"/O. 76u MIN (NOTE 16) OVER 50u"/1. 27u NI	
-248				. 150/3.81	150u"/3.81u TIN	
-249				. 675/17.15	15u"/O. 38u MIN (NOTE 16) OVER 50u"/1. 27u NI	
-250					30u"/O. 76u MIN (NOTE 16) OVER 50u"/1. 27u NI	
-251					30u"/O. 76u MIN (NOTE 16) OVER 50u"/1. 27u NI	
-252	2 X 22		2. 100/53.34	. 675/17.15	150u"/3.81u TIN	
88880-253	2 X 17	D	1. 600/40.64	. 105/2.67	15u"/O. 38u MIN (NOTE 16) OVER 50u"/1. 27u NI	NOTE 2
88880-254					UNAVAILABLE	
THRU						
88880-279						
88880-280	2 X 10	D	. 900/22.86	. 105/2.67	150u"/3.81u TIN	NOTE 2
88880-281						
THRU						
88880-306						

mat'l. code		surface / tolerance	projection	product family
tech ngr date	ISO 1302	ISO 406	1st angle	QUICKIE
		ISO 1101	tolerances unless otherwise specified	title
K	angles	XXX/XXX	INCH/MM	HEADER, QUICKIE, SLIM LINE
	±2"	XXX/XXX/XXX/XXX	scale 1:1	VERTICAL, 4-WALL
	dr M. CLOUSER	7/11/90	dwg no	88880
	engr M. SMYK	7/11/90	sheet of	10
	chr M. SMYK	8/21/91	size	A3
	appd M. SMYK	8/21/91	type	Product Customer Drawing
sheet revision				
index sheet				



PRODUCT NO. NOTE 8 & 9	SIZE	STYLE	DIM C	DIM J	PIN PLATING	PLASTIC MATERIAL
88880-307	2 X 5	B	.400/10.16	.097/2.46	30u" / 0.76u MIN <NOTE 16> OVER 50u" / 1.27u NI	NOTE 2
-308	2 X 5	B	.400/10.16			
-309	2 X 7	C	.600/15.24			
-310	2 X 8	D	.700/17.78			
-311	2 X 10		.900/22.86			
-312	2 X 12		1.100/27.94			
-313	2 X 13		1.200/30.48			
-314	2 X 15		1.400/35.56			
-315	2 X 17		1.600/40.64			
-316	2 X 20		1.900/48.26			
-317	2 X 22		2.100/53.34			
-318	2 X 25		2.400/60.96			
-319	2 X 30		2.900/73.66	.097/2.46		
-320	2 X 8		.700/17.78	.105/2.67		
-321	2 X 25		2.400/60.96		30u" / 0.76u MIN <NOTE 16> OVER 50u" / 1.27u NI	
-322	2 X 8		.700/17.78		50u" / 1.27u MIN <NOTE 16> OVER 50u" / 1.27u NI	
-323	2 X 17		1.600/40.64	.105/2.67	50u" / 1.27u MIN <NOTE 16> OVER 50u" / 1.27u NI	
-324	2 X 25		2.400/60.96	.120/3.05	15u" / 0.38u MIN <NOTE 16> OVER 50u" / 1.27u NI	
-325	2 X 25		2.400/60.96	.150/3.81	30u" / 0.76u MIN <NOTE 16> OVER 50u" / 1.27u NI	
-326	2 X 10		.900/22.86	.120/3.05	15u" / 0.38u MIN <NOTE 16> OVER 50u" / 1.27u NI	
-327	2 X 17		1.600/40.64	.120/3.05	15u" / 0.38u MIN <NOTE 16> OVER 50u" / 1.27u NI	
-328	2 X 25		2.400/60.96	.120/3.05	15u" / 0.38u MIN <NOTE 16> OVER 50u" / 1.27u NI	
-329	2 X 13		1.200/30.48	.150/3.81	15u" / 0.38u MIN <NOTE 16> OVER 50u" / 1.27u NI	
-330	2 X 25		2.400/60.96		15u" / 0.38u MIN <NOTE 16> OVER 50u" / 1.27u NI	
-331	2 X 30		2.900/73.66		15u" / 0.38u MIN <NOTE 16> OVER 50u" / 1.27u NI	
-332	2 X 17		1.600/40.64		15u" / 0.38u MIN <NOTE 16> OVER 50u" / 1.27u NI	
-333	2 X 20		1.900/48.26	.150/3.81	30u" / 0.76u MIN <NOTE 16> OVER 50u" / 1.27u NI	
-334	2 X 10		.900/22.86	.105/2.67	15u" / 0.38u MIN <NOTE 16> OVER 50u" / 1.27u NI	
-335	2 X 20		1.900/48.26	.105/2.67	30u" / 0.76u MIN <NOTE 16> OVER 50u" / 1.27u NI	
-336	2 X 22	D	2.100/53.34	.105/2.67	30u" / 0.76u MIN <NOTE 16> OVER 50u" / 1.27u NI	
-337	2 X 12	D	1.100/27.94	.150/3.81	15u" / 0.38u MIN <NOTE 16> OVER 50u" / 1.27u NI	
-338	2 X 5	B	.400/10.16	.150/3.81	15u" / 0.38u MIN <NOTE 16> OVER 50u" / 1.27u NI	
-339	2 X 4	B	.300/7.62	.105/2.67	15u" / 0.38u MIN <NOTE 16> OVER 50u" / 1.27u NI	
88880-340	2 X 10	D	.900/22.86	.150/3.81	30u" / 0.76u MIN <NOTE 16> OVER 50u" / 1.27u NI	NOTE 2

mat'l. code	surface / tolerance	projection	product family
tech naddr	ISO 1302 / ISO 406 / ISO 101	tolerances unless otherwise specified	QUICKIE
K	angles	line	title
	±2°	XXX/XXX/XXX/061	HEADER, QUICKIE, SLIM LINE VERTICAL, 4-WALL
	dr M. CLOUSER 7/11/90	INCH/MM	dwg no 88880
	engr M. SMYK 7/11/90	scale 1:1	sheet 8 of 10 size A3
	chr M. SMYK 8/21/91		type Product Customer Drawing
sheet index	appd M. SMYK 8/21/91		
revision			
sheet			

PRODUCT NO. NOTE 8 & 9	SIZE	STYLE	DIM C	DIM J	PIN PLATING	PLASTIC MATERIAL	POLARIZED PIN
88880-404	2 X 20	D	1.900/48.26	.120/3.05	15µ/0.38µm MIN (NOTE 16) OVER 50u"/1.27u Ni	NOTE 2	20
	2 X 25		2.400/60.96				-
	2 X 10		.900/22.86				14
	2 X 25		2.400/60.96				25
	2 X 17	D	1.600/40.64				3
88880-427	2 X 5	B	.400/10.16	.120/3.05	15µ/0.38µm MIN (NOTE 16) OVER 50u"/1.27u Ni		1
88880-428	2 X 5	B	.400/10.16	.150/3.81	30u"/0.76u MIN (NOTE 16) OVER 50u"/1.27u Ni	NOTE 2	10

mat'l. code		surface	tolerance	projection	product family
ISD 1302	ISD 406	ISD 1101	ISD 1101	QUICKIE	QUICKIE
tolerances unless otherwise specified		angles	line	INCH/MM	title
±2°		XXL01/XXL03	XXXL002/XXXL013	scale 1:1	HEADER, QUICKIE, SLIM LINE VERTICAL, 4-WALL
dr M. CLOUSER 7/11/90		engr M. SMYK 7/11/90	chr M. SMYK 8/21/91	dwg no	sheet 10 of 10 size
appd M. SMYK 8/21/91				88880	A3
sheet index	revision	sheet		type	Product Customer Drawing

4	PDS: Rev :K	STATUS: Released	Printed: Jul 10, 2012
---	-------------	------------------	-----------------------