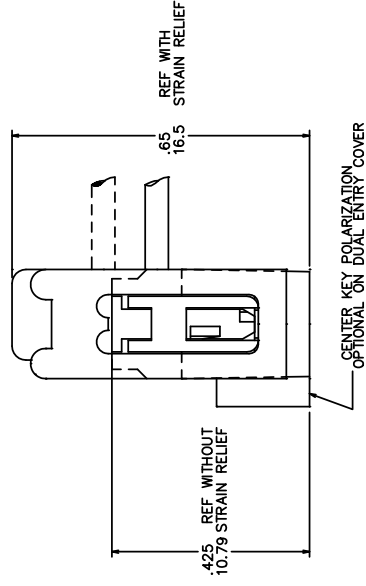
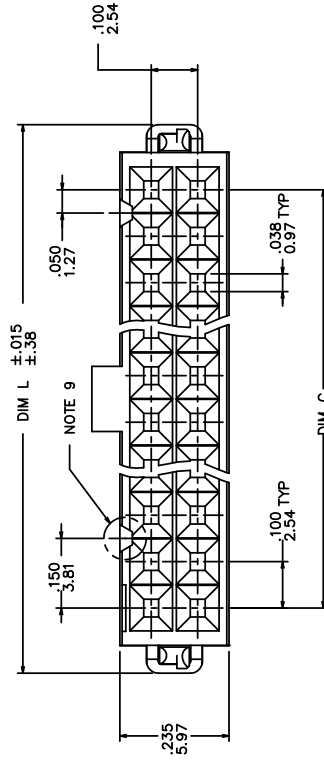
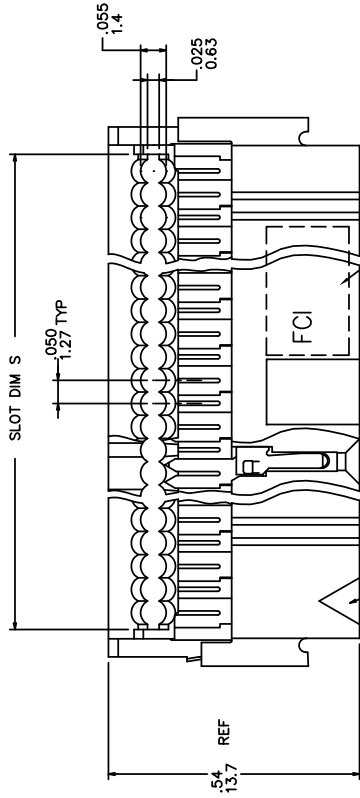
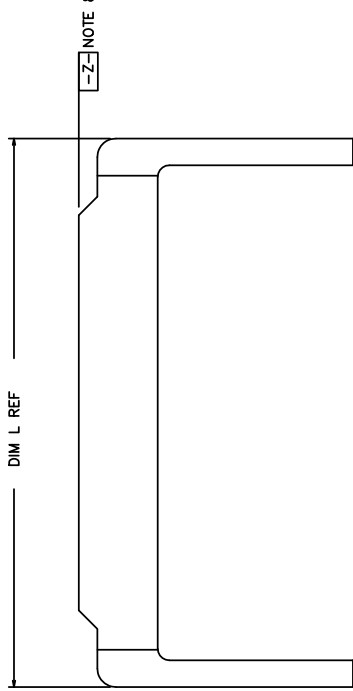


PRODUCT NUMBER  
SEE TABLE



Copyright FCI

Fciconnect.com

form: A3

mat'l. code		surface	tolerance	projection	product family
		ISO 1302	ISO 406	1st angle	QUICKIE
		tolerances unless otherwise specified	ISO 1101	INCH/MM	title
		angles	.XXX/IN/.XXX	scale 8:1	DUAL POLARIZED QUICKIE II ASSEMBLY
		linear	.XXX/IN/.XXX		dwg no 66900 sheet 1 of 2 size A3
		±.2°	.XXX/IN/.XXX		type Product Customer Drawing
		dr	M. CORNMANN		
		engr	M.SYMK		
		chr	M.SYMK		
		appd	M.SYMK		
sheet	revision	V			
index	sheet	1			
	sheet	2			

4 PDS: Rev : V

STATUS: released

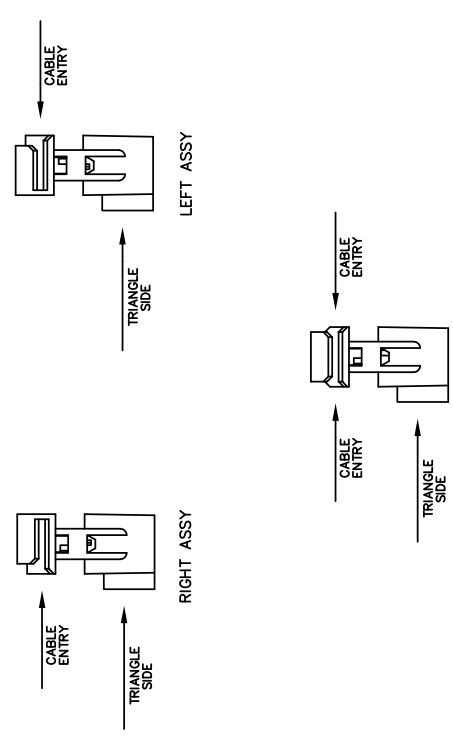
Printed: Nov 05, 2012

PRODUCT No. NOTE 12	SIZE	DIM L	DIM S	DIM C	COVER ORIENTATION		POLARIZATION	STRAIN RELIEF	COVER		POLARIZATION	STRAIN RELIEF	NOTE	
					DASH NO	STYLE			ORIENTATION	STYLE				ORIENTATION
66900-X10	2X5	.680/17.27	.520/13.21	.400/10.16	-0XX	THRU	DUAL ENTRY	DUAL POL.	YES	BLIND	LEFT	DUAL POL.	NO	NOTE 17
-X14	2X7	.860/22.35	.720/18.29	.600/15.24	-1XX	THRU	DUAL ENTRY	DUAL POL.	NO	THRU	DUAL ENTRY	DUAL POL.	YES	
-X16	2X8	.980/24.89	.820/20.83	.700/17.78	-2XX	THRU	DUAL ENTRY	CENTER KEY & DUAL POL.	YES	THRU	DUAL ENTRY	DUAL POL.	NO	
-X20	2X10	1.180/29.97	1.020/25.91	.900/22.86	-3XX	THRU	DUAL ENTRY	CENTER KEY & DUAL POL.	NO	THRU	DUAL ENTRY	CENTER KEY & DUAL POL.	NO	
-X24	2X12	1.380/35.05	1.220/30.99	1.100/27.94	-4XX	BLIND	RIGHT	DUAL POL.	YES	BLIND	RIGHT	DUAL POL.	YES	
-X26	2X13	1.480/37.59	1.320/33.53	1.200/30.48	-5XX	BLIND	RIGHT	DUAL POL.	NO	BLIND	RIGHT	DUAL POL.	NO	
-X30	2X15	1.680/42.67	1.520/38.61	1.400/35.56	-6XX	BLIND	LEFT	DUAL POL.	YES	BLIND	LEFT	DUAL POL.	NO	
-X34	2X17	1.880/47.75	1.720/43.69	1.600/40.64	-7XX	BLIND	LEFT	DUAL POL.	NO	BLIND	LEFT	DUAL POL.	NO	
-X40	2X20	2.180/55.37	2.020/51.31	1.900/48.26	-8XX	BLIND	RIGHT	CENTER KEY & DUAL POL.	YES	BLIND	RIGHT	CENTER KEY & DUAL POL.	YES	
-X44	2X22	2.380/60.45	2.220/56.39	2.100/53.34	-9XX	BLIND	LEFT	CENTER KEY & DUAL POL.	YES	BLIND	LEFT	CENTER KEY & DUAL POL.	YES	
-X50	2X25	2.680/68.07	2.520/64.01	2.400/60.96										
66900-X60	2X30	3.180/80.77	3.020/76.71	2.900/73.66										

NOTES:

1. TERMINAL MATERIAL: FULL HARD PHOS. BRONZE ALLOY, UNS-C51000.
2. TERMINAL PLATING: 50u"/27u MIN NI UNDERPLATE OVER ENTIRE TERMINAL AND 30u"/76u MIN AU OR GXT IN CONTACT AREA ONLY.
3. MOLDING MATERIAL: BASE & COVER- GLASS FILLED POLYESTER, FLAME RETARDANT PER UL94V-0, COLOR- BLUE.
4. CONNECTOR ASSEMBLIES PACKAGED IN TUBES.
5. THE FIRST TWO CAVITY POSITIONS AND THE LAST TWO, ARE IDENTIFIED BY NUMBER.
6. POLARIZING FEATURES ARE DESCRIBED IN TABLE.
7. MOLDING MATERIAL: STRAIN RELIEF- NYLON, FLAME RETARDANT PER UL94V-0, COLOR- BLUE.
8. STRAIN RELIEF DIM APPLIES WHEN DATUM -Z- IS HELD IN A RESTRAINED CONDITION.
9. THE POLARIZING FEATURE ON THIS END IS NON-EXISTANT ON 2X5 AND 2X7 POSITION CONNECTORS.
10. 2x5 POSITION NOT AVAILABLE WITH POLARIZATION SLOT ON CENTER KEY STYLE.
11. TO ORDER PARTS THAT DO NOT HAVE "MARKED INFO" (DATE, P/N, ETC), ADD A "U" AFTER THE PART NUMBER. EXAMPLE 66900-010 U.
12. ADD "Lf" SUFFIX AT THE END OF PART NUMBER FOR LEAD FREE OPTION.
13. IF "Lf" P/N THE PRODUCT MEETS EUROPEAN UNION DIRECTIVES AND OTHER COUNTRY REGULATION AS DESCRIBED IN GS-22-008.
14. THE PRODUCT IS NOT INTENDED TO BE EXPOSED TO A MANUFACTURING SOLDER PROCESS.
15. PRODUCT SPEC. BUS-12-082
16. PLATING OPTIONS: MAY BE EITHER GOLD OR GXT PLATED AT MANUFACTURER'S OPTION.
17. FOR CUSTOMER SPECIAL REQUIREMENT, TERMINAL PLATING: 50u"/27u MIN NI UNDERPLATE OVER ENTIRE TERMINAL AND 30u"/76u MIN AU IN CONTACT AREA ONLY.

COVER ORIENTATION



mat'l. code		surface		tolerance		projection		product family	
ISO 1302		ISO 406		ISO 1101		INCH/MM		QUICKIE	
tr ecn no dr		date		angles		tolerances unless otherwise specified		title	
v				linear		.XXX/0.001/.XXX/0.001		DUAL POLARIZED QUICKIE II ASSEMBLY	
				±2°		.XXX/0.001/.XXX/0.001		dwg no sheet 2 of 2 size	
				dr M. CORNMAN		1/3/91		66900	
				engr M.SYMK		1/3/91		Product Customer Drawing	
				chr M.SYMK		1/3/91		type	
sheet		revision		appd M.SYMK		1/3/91		Drawing	
index		sheet							