

Slide Switch

Q-2504

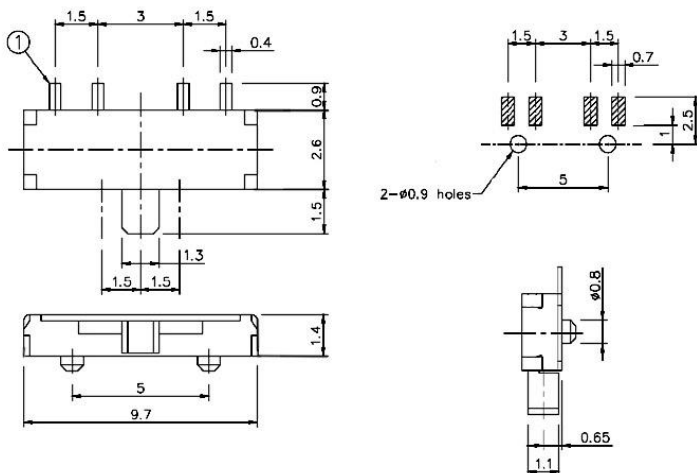
TYPE:

SPECIFICATIONS



Contact Type	SPDT
Pin Width	1.5 mm
Rating	DC 4V, 0.3A
Contacts Resistance	30Ω
Insulation Resistance	100Ω
Minimum Load	DC 500V
Dielectric Strengths	AC 500V / 1 minute
Life Test	10 000 cycles/ minute
Material	Plastic & Metal

Outline Drawing



Circuitry

