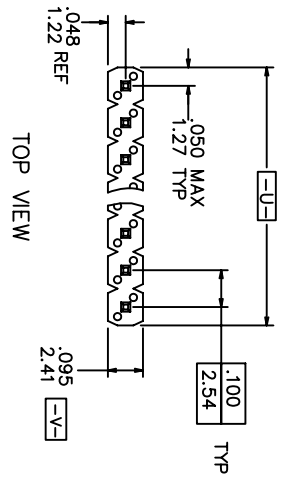
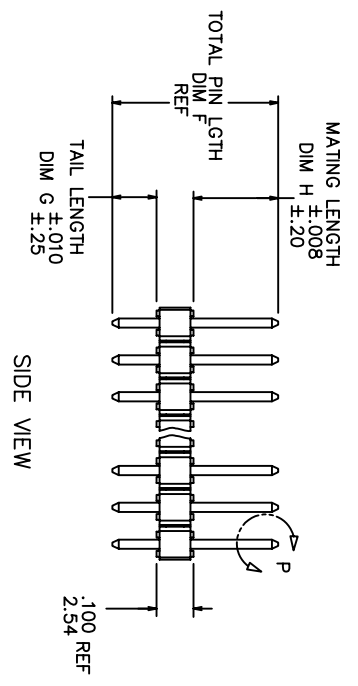
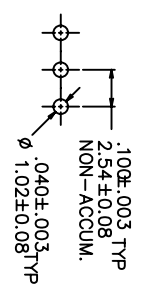


PRODUCT NUMBER  
XXXXX-XXXXTLE  
LEAD FREE OPTION  
SEE NOTE 1,11  
TUBE PACKAGING OPTION  
SEE NOTE 1  
HIGH TEMPERATURE PLASTIC  
SEE NOTE 1  
NO. OF POSITIONS  
SEE NOTE 1  
PIN PLATING  
SEE SHEET 2  
BASE PART NO.

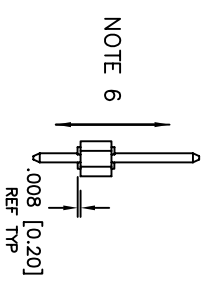
PRODUCT NUMBER  
69190-XXXXX HALF  
LEAD FREE OPTION  
SEE NOTE 1,11  
PACKAGING OPTION  
SEE NOTE 1  
HIGH TEMPERATURE PLASTIC  
SEE NOTE 1  
INDICATE DIFFERENT MATING LENGTH  
AND TAIL LENGTH  
NO. OF POSITIONS  
SEE NOTE 1  
PIN PLATING  
SEE SHEET 2  
BASE PART NO.



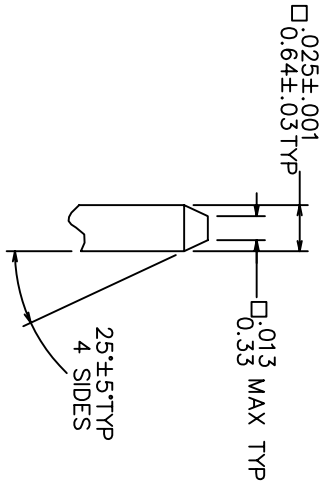
RECOMMENDED HOLE PATTERN



END VIEW



Ø .020/.51 (M) U (M) V (S)  
NOTE 4



DETAIL P  
TYP BOTH ENDS

mat'l. code	surface	tolerance	projection	product family
NOTES 2 & 3	ISO 1302	ISO 406 ISO 1101	INCH/MM	BERGSTIK
itr ecn no/dr	date	tolerances unless otherwise specified	scale 1:1	BERGSTIK® II HEADER
AM EX-A-13874	DCS 2012-12-12	angles		.100/2.54 SR SELF-RET
AN EX-A-16105	ZK 2013-10-22	line of		
AP EX-A-19414	HJ 2014-11-13	XXXA000/XXXA001		
		dr	D. WHITTING	
AJ M06-0346	MHT 9/04/06	engr	T.HANNA	4/19/93
AK M08-0291	MHT 10/06/08	chr	T. BREWBAKER	4/19/93
AL N11-0118	UJ 2011-04-11	ppcd	T.HANNA	4/19/93
sheet	revision	ap		
index	sheet	1-4		

PIN PLATING CODES:

XXXXX-1YY	30u"/0.76u MIN (SEE NOTE 12) OVER 50u"/1.27u MIN NI
XXXXX-2YY	15u"/0.38u MIN (SEE NOTE 12) OVER 50u"/1.27u MIN NI
XXXXX-3YY	50u"/1.27u MIN (SEE NOTE 12) OVER 50u"/1.27u MIN NI
XXXXX-4YY	100u"/2.54u MIN Sn OVER 50u"/1.27u MIN NI (SEE NOTE 13)
XXXXX-4YYYHLF	
XXXXX-5YY	15u"/0.38u MIN (SEE NOTE 12) OVER 50u"/1.27u MIN NI
XXXXX-6YY	30u"/0.76u MIN (SEE NOTE 12) OVER 50u"/1.27u MIN NI
XXXXX-7YY	30u"/0.76u MIN (SEE NOTE 12) OVER 50u"/1.27u MIN NI
XXXXX-8YY	15u"/0.38u MIN (SEE NOTE 12) OVER 50u"/1.27u MIN NI
XXXXX-9YY	15u"/0.38u MIN (SEE NOTE 12) OVER 50u"/1.27u MIN NI
XXXXX-0YY	30u"/0.76u MIN (SEE NOTE 12) OVER 50u"/1.27u MIN NI

NOTES

1. PART NUMBER OPTIONS:  
PIN PLATING CODES (SEE ABOVE)

HIGH TEMP. MATERIAL:  
FOR HIGH-TEMPERATURE APPLICATIONS, SPECIFY AN "H" AT THE END OF THE PART NUMBER, AND PCT WILL BE SUPPLIED.

NUMBER OF POSITION:  
ANY NUMBER OF POSITIONS FROM 2 THRU 36.

PACKAGING:  
PACKAGED IN POLY BAGS.

EIGHT DIGIT PART NUMBERS FOLLOWED BY A "T" ARE PACKAGED IN TUBES. SEE SPECIFIC PART NUMBERS FOR AVAILABILITY.

EIGHT DIGIT PART NUMBERS FOLLOWED BY A "A" ARE PACKAGED IN TAPE AND REEL WITH PICKUP CAPS.

LEAD FREE:  
ADD "HLF" SUFFIX AT THE END OF PART NUMBER FOR LEAD FREE OPTION, NOT AVAILABLE FOR -5YY, -5YYH, -6YY & -6YYH.

2. BODY MATERIAL:

MANUFACTURER'S OPTION OF NYLON OR PCT, GLASS FIBER REINFORCED, FLAME RETARDENT PER UL-94V-0.  
COLOR: BLACK. OR  
MINERAL FILLED LCP. COLOR BLACK  
FLAME RETARDENT PER UL-94V-0.

PART NUMBERS WITH "H" SUFFIX WILL WITHSTAND EXPOSURE TO 260° PEAK TEMPERATURE FOR 20 SECONDS IN WAVE SOLDER, INFRARED OR VAPOR PHASE SOLDER PROCESS.  
PART NUMBERS WITHOUT "H" SUFFIX WILL WITHSTAND EXPOSURE TO 260° PEAK TEMPERATURE FOR WAVE SOLDER PROCESS.

- PIN MATERIAL: PHOS-BRONZE.
- MEASURED WITH PART IN RESTRAINED CONDITION.
- TWO SIDES OF PIN TIPS NOT PLATED. TYPICAL BOTH ENDS.
- 2LBS/0.9KG MIN PIN RETENTION IN EITHER DIRECTION.
- ±.010/0.25 TOL APPLIES TO ALL 'G' TAILS EXCEPT INDICATED PARTS ON TABLE WHERE +.010/0.25 -.000/0.00 APPLIES.
- DETAIL N DIMENSIONS APPLY TO 2 POSITION PARTS ONLY

9. SECTION R-R DIMENSIONS ONLY APPLY TO RETENTION.  
PIN POSITIONS FOR 3 POSITION PARTS AND LARGER. RETENTION PIN POSITIONS LOCATED AT MANUFACTURER'S OPTION.

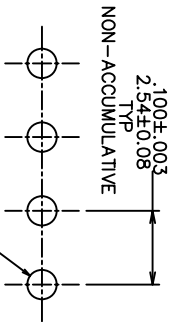
10. 5LB/2.3KG MAX INSERTION FORCE AND .25LB/.1KG MIN RETENTION FORCE PER RETENTIVE PIN USING .062/1.57 THICK CIRCUIT BOARDS AND RECOMMENDED HOLE PATTERN.

11. THESE PRODUCTS MEETS EUROPEAN UNION DIRECTIVES AND OTHER COUNTRY REGULATION AS DESCRIBED IN GS-22-008.

12. PLATING OPTIONS:  
PERFORMANCE PLATING WILL BE EITHER GOLD OR GXT ON POST OR TAIL, OPTIONALLY (78~295u"/2~7.5u) TIN ON TAIL.

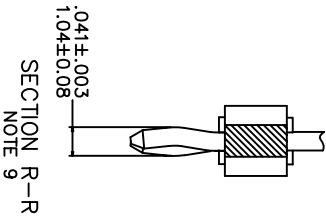
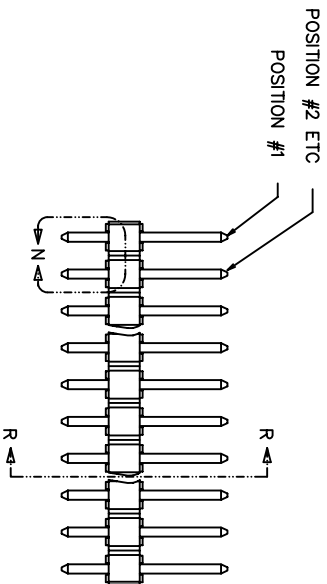
13. THIS PRODUCT HAS 100% TIN PLATING IN THE INTERFACE AND HAS NOT BEEN TESTED FOR WHISKER GROWTH IN ALL INTERCONNECT ENVIRONMENTS."

mat'l. code	surface	tolerance	projection	product family
AP	ISO 1302	ISO 406 SO 1101	INCH/MM scale 1:1	BERGSTIK
itr	ecn	no	dr	date
			angles	line of
			0±.2°	XXXXXX/XXXXX13 XXXXXXXX/XXXXXXXX
			dr	D. WHITTING 4/19/93
			engr	T.HANNA 4/19/93
			chr	T. BREWBAKER 4/19/93
			appt	T.HANNA 4/19/93
sheet	revision			
index	sheet			

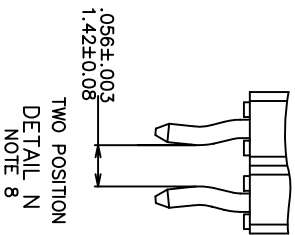


RECOMMENDED HOLE PATTERN

$\phi$  .040±.003 TYP  
1.02±0.08



SECTION R-R  
NOTE 9



TWO POSITION  
DETAIL N  
NOTE 8

mat'l. code		surface	tolerance	projection	product family	
ISO 1302		ISO 406	ISO 1101	INCH/MM	BERGSTIK	
itr	ecn no/dr	date	ISO 1101	scale 1:1	title	
AP			tolerances unless otherwise specified		BERGSTIK II HEADER	
			XX#/X#/X#		100/2.54 SR SELF-RET	
			angles		sheet 3 of 4 size	
			0±.2°		A3	
			line of		type Product Customer Drawing	
			XXX#(X#)/XX#(X#)			
			dr			
			D. WHITTING			
			4/19/93			
			engr			
			T.HANNA			
			4/19/93			
			chr			
			T. BREWBAKER			
			4/19/93			
			appp			
			T.HANNA			
			4/19/93			
sheet	revision					
index	sheet					





FCIconnect.com

Copyright FCI

PRODUCT NUMBER	TOTAL PIN LENGTH		TAIL LENGTH		MATING LENGTH		PACKAGING	NOTE	LF OPTION
	DIM F	METRIC	DIM G	METRIC	DIM H	METRIC			
69190-XXX	0.450	11.43	0.120	3.05	0.230	5.84	POLY BAGS/TUBES	-	NOTE 1,11
72348-XXX	0.515	13.08	0.120	3.05	0.295	7.49	POLY BAGS/TUBES	-	
78229-XXX	0.538	13.67	0.120	3.05	0.318	8.08	POLY BAGS/TUBES	-	
78250-XXX									
78538-XXX	0.620	15.75	0.120	3.05	0.400	10.16	POLY BAGS	-	
78594-XXX	0.760	19.30	0.120	3.05	0.540	13.72	POLY BAGS	-	
79429-XXX	0.695	17.65	0.120	3.05	0.475	12.07	POLY BAGS	-	
79978-XXX	0.450	11.43	0.120	3.05	0.230	5.84	POLY BAGS/TUBES	-	
86505-XXX	0.440	11.18	0.120	3.05	0.220	5.59	POLY BAGS	-	
87036-XXX	0.830	21.08	0.120	3.05	0.610	15.49	POLY BAGS	-	
87068-XXX	0.530	13.46	0.115	2.92	0.315	8.00	POLY BAGS	-	
87280-XXX	1.000	25.40	0.120	3.05	0.780	19.81	POLY BAGS	-	
87452-XXX	0.840	21.34	0.120	3.05	0.620	15.75	POLY BAGS	-	
87453-XXX	0.990	25.15	0.120	3.05	0.770	19.56	POLY BAGS	-	
87918-XXX	0.730	18.54	0.120	3.05	0.510	12.95	POLY BAGS	-	
90603-XXX	0.430	10.92	0.100	2.54	0.230	5.84	POLY BAGS	-	
90610-XXX	0.927	23.55	0.100	2.54	0.727	18.47	POLY BAGS	-	
94549-XXX	0.415	10.54	0.085	2.16	0.230	5.84	POLY BAGS	-	
69190-XXX01HLF	0.425	10.80	0.095	2.41	0.230	5.84	POLY BAGS	-	
69190-XXX02HLF	0.378	9.59	0.120	3.05	0.157	4.00	POLY BAGS/TUBES	-	NOTE 1,11

mat'l. code		surface		tolerance		projection		product family	
litr ecn no/dr		ISO 1302		ISO 406		INCH/MM		BERGSTIK	
date		tolerances unless otherwise specified		ISO 1101		scale 1:1		BERGSTIK II HEADER	
angles		line of		XXH/XXL3		dwg no		sheet4 of 4 size	
0±.2°		XXXH00/XXAL13		XXH00/XXAL05		100/2.54 SR SELF-RET		A3	
dr		D. WHITING		4/19/93		FCI		Product Customer Drawing	
engr		T.HANNA		4/19/93					
chr		T. BREWBAKER		4/19/93					
appp		T.HANNA		4/19/93					
sheet revision									
index sheet									

STATUS:Released Printed: Nov 13, 2014

