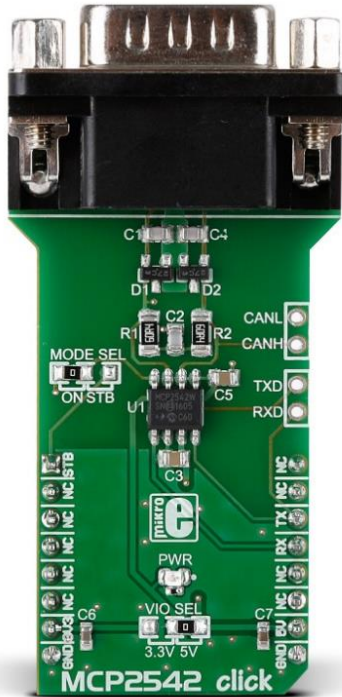


MCP2542 click



PID: MIKROE-2299

RS Product code: [136-0823](#)

MCP2542 click is a mikroBUS add-on board with a Microchip CAN FD Transceiver with Wake-Up Pattern. The physical layer is compliant with CAN 2.0 and CAN with Flexible Data Rate (CAN FD).

MCP2542 is designed specifically for high-speed CAN FD applications with communication speeds of up to 8 Mbps. Longer than usual BUS lengths are supported thanks to the improved maximum propagation delay.

The board has a standard RS232 port for CAN communications.

MCP2542 click communicates with the target board MCU through mikroBUS UART interface with an additional StandBy pin (STBY, in place of default mikroBUS AN pin). Two additional pairs of pins on the right edge of the board offer separate UART connection as well as a CAN interface.

The board is designed to use either a 3.3V or 5V power supply.

Specification

Product Type	RS232
Applications	CAN 2.0 and CAN FD networks in Automotive, Industrial, Aerospace, Medical, and Consumer applications
On-board modules	MCP2542WFD CAN FD transceiver
Key Features	Implements ISO11898-2:2003, ISO11898-5:2007, and ISO/DIS11898-2:2015
Key Benefits	Increased maximum propagation delay allows longer bus lengths
Interface	UART
Power Supply	3.3V or 5V
Compatibility	mikroBUS
Click board size	L (57.15 x 25.4 mm)
Weight	40g

Downloads

[MCP2542 click Examples](#)

[MCP2542 click Documentation](#)

[MCP2542 click Tutorials](#)