



Data Sheet

Band41 TRx Filter 1109

SPT2G59ACG1

2021/5/25
V1.2

Description:

The Spectron SPT2G59AGC1 is a miniature B41 TRx filter designed for applications in LTE-A, CAT1, customer premise equipment, and mobile communication devices.

The SPT2G59AGC1 provides +29 dBm power handling, low insertion loss and high out of band rejection.

The design and manufacturing of the SPT2G59AGC1 exploit Spectron's exclusive TSAW technology to deliver competitive performance against state of the art at a low cost.

The SPT2G59AGC1 is compatible with high volume, lead-free SMT soldering processes.

Features:

- Unbalanced to unbalanced operation
- Terminating Impedance: 50 Ω
- Compact miniature size
 - 1.1 mm \times 0.9 mm footprint
 - 0.6 mm max-height
- Environmental
 - RoHS 6 Compliant

Specifications:

- Performance specified from -20°C to +85°C
- Useable passband 120MHz
- In-band insertion loss: 2.4 dB Max

Applications:

- For LTE-A
- For CAT1
- For Communication Devices

Electrical Specifications

Table 1 Electrical Specifications: Single filter.

| Single Filter | | | Specification | | |
|----------------------|-------------------|------|----------------------|----------------------|----------------------|
| Parameter | Condition [MHz] | Unit | Minimum ¹ | Typical ² | Maximum ¹ |
| Insertion Loss | 2535.00 ~ 2655.00 | dB | - | 1.9 | 2.4 |
| Inband Ripple | 2535.00 ~ 2655.00 | dB | - | 0.5 | 2.0 |
| VSWR | 2535.00 ~ 2655.00 | - | - | 1.6 | 2.1 |
| Absolute Attenuation | 10.00 ~ 960.00 | dB | 38 | 43 | - |
| | 1225.00 ~ 1559.00 | dB | 20 | 25 | - |
| | 1559.00 ~ 1606.00 | dB | 20 | 25 | - |
| | 1606.00 ~ 1710.00 | dB | 20 | 25 | - |
| | 1710.00 ~ 2170.00 | dB | 18 | 20 | - |
| | 2170.00 ~ 2400.00 | dB | 18 | 20 | - |
| | 2401.00 ~ 2483.00 | dB | 20 | 25 | - |
| | 2750.00 ~ 4900.00 | dB | 20 | 25 | - |
| | 4900.00 ~ 6000.00 | dB | 23 | 28 | - |

1. Min/Max specifications are guaranteed at the indicated temperature (unless otherwise noted).

2. Typical data is the average value (arithmetic mean) of the parameter over the indicated frequency range at +25°C.

Figure 1 Electrical Characteristics: Narrowband.

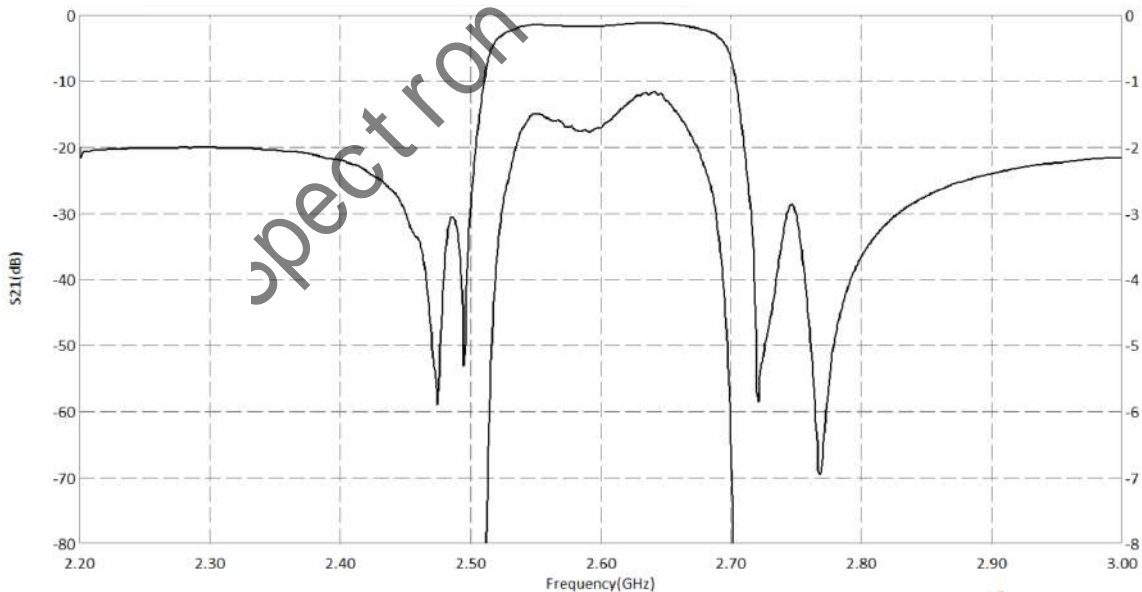


Figure 2 Electrical Characteristics: Wideband.

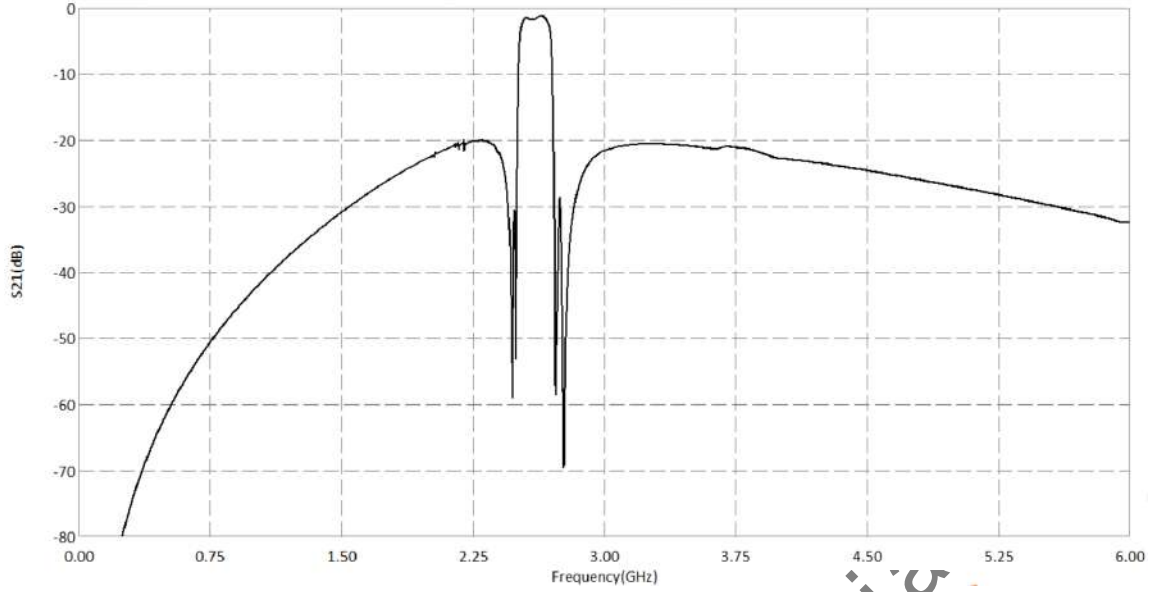
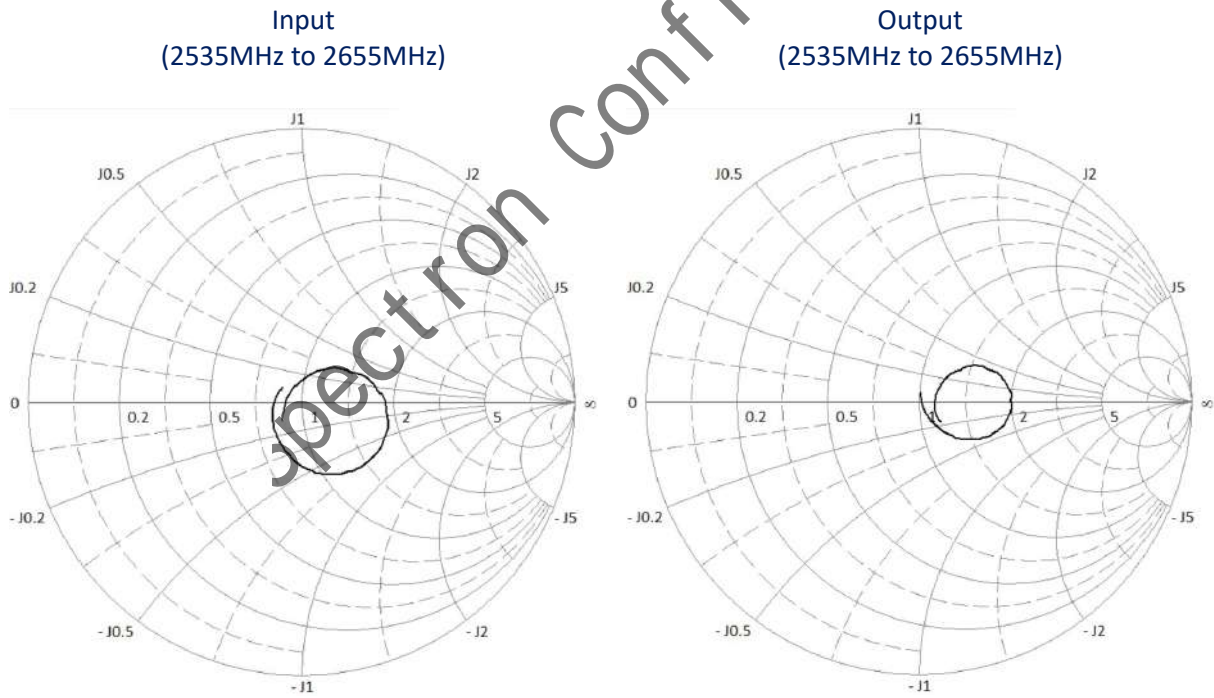
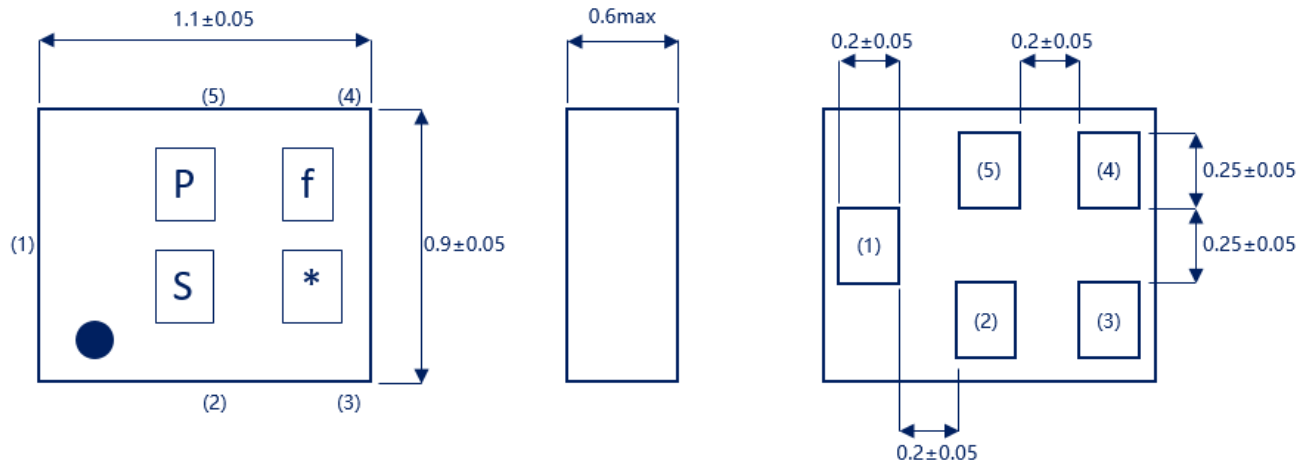


Figure 3 Input and Output Impedances.



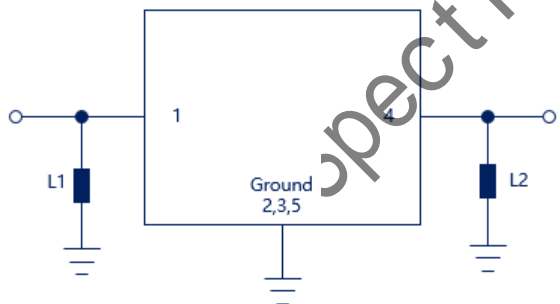


| Marking Description | |
|---------------------|-------------|
| P | Status Code |
| f | Band Code |
| S | Date Code |
| * | Lot Number |

| Pin Configuration | |
|-------------------|--------|
| 1 | Input |
| 4 | Output |
| 2,3,5 | Ground |

1. All dimensions are in millimeters. Angles are in degrees.

Matching



| Port | Matching Component ¹ |
|--------|---------------------------------|
| Input | L1 : 3.1 nH (Ideal inductor) |
| Output | L2 : 3.1 nH (Ideal inductor) |

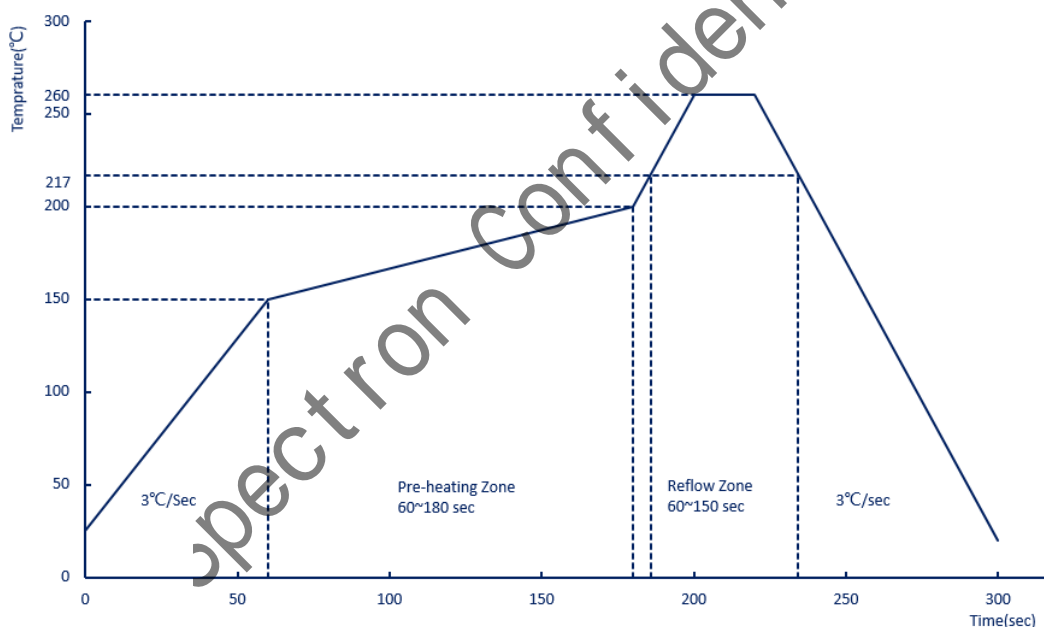
1. Matching component values shown are recommended based on the Spectron evaluation board. Value adjustment may be required on the end-user's circuit boards for the selected component manufacturer and PCB material.

Maximum Ratings¹

| Characteristic | Rating | Unit |
|---|-----------|------|
| Operating Temperature ² | -20 ~ +85 | °C |
| Storage Temperature | -40 ~ +85 | °C |
| Maximum Input Power ^{3,4} | +29 | dBm |
| DC Voltage Between The Terminals ⁵ | 3 | V |
| ESD Voltage (HBM) | > 100 | V |
| ESD Voltage (CDM) | > 100 | V |
| Moisture Sensitivity Levels | 3 | / |

1. Operation exceeding any one of these conditions may result in permanent damage to the device.
2. The device will function over the recommended range without degradation in reliability or permanent change in performance but is not guaranteed to meet electrical specifications.
3. LTE modulation. Applies over a temperature range of TC = -20° to +85°C.
4. Maximum input power is only specified for input power of SPT2G59AGC1 (Pin 1).
5. The DC resistance from Pin 1 and 4 (Input/Output) to Pin2, Pin3 and Pin5(Ground) of this device is typically hundreds of kΩ to MΩ.

Recommended SMT Solder Profile



Ordering Information

| Part Number | Number of Devices | Container |
|---------------|-------------------|---------------|
| SPT2G59AGC1-1 | 10000pcs | Tape and Reel |

Spectron Technologies, Spectron Microsystems, and the spectrum topology logo are among the trademarks of Spectron and/or its affiliates in the People's Republic of China, certain other countries, and/or the EU.

Copyright © 2021 Spectron. All Rights Reserved.

The term "Spectron" refers to Spectron (Shenzhen) Technologies Co. Ltd and its subsidiaries.

Information furnished by Spectron is believed to be accurate and reliable. Spectron reserves the right to make changes without further notice to any products or data herein to improve reliability, function, or design. However, Spectron does not assume any liability arising from the application or use of this information, nor the application or use of any product or circuit described herein. Neither does Spectron convey any license under its patent rights nor the rights of others.

