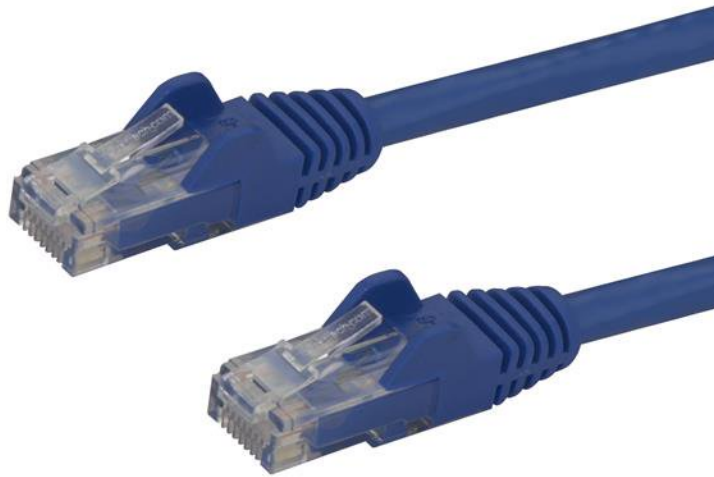


## Cat6 Patch Cable with Snagless RJ45 Connectors - 1m, Blue

Product ID: N6PATC1MBL



The N6PATC1MBL Cat 6 Patch Cable (1m) meets or exceeds all Category 6 cable specifications to ensure reliable Gigabit network connections, and features a durable blue PVC jacket that enables you to color code your network cable runs as needed.

To ensure long-lasting performance, this high quality Cat 6 patch cable features a snagless design that protects the RJ45 connector clips from damage and makes the cable less prone to snagging during installation. The cable also features molded PVC strain relief that prevents the RJ45 connector termination points from bending at sharp angles - reducing the risk of cable damage, which could decrease network performance.

Constructed of only top quality materials, this Cat 6 Patch Cord delivers reliable performance and is backed by our Lifetime Warranty.

## **100% Copper - a better value**

StarTech.com Cat6 cables are manufactured using high-quality copper conductors. While many cable manufacturers offer a "cheaper" cable based on a copper-coated aluminum core, we make no compromises on quality to ensure you receive top value and performance for your network cable investment.

## **24 AWG Wire**

This Cat6 cable is constructed with 24 gauge copper wire, to support a broad range of Ethernet applications such as Power over Ethernet (PoE). Because we use a high quality copper wire, our cables easily sustain the power required for Power over Ethernet applications, whereas the inferior quality offered by copper-coated aluminum cables may be subject to insufficient power delivery, heat buildup, equipment damage and potentially, fire.

## **50-micron Gold Connectors**

This Cat 6 patch cable offers high quality connectors comprised of 50-micron gold, to deliver optimum conductivity while eliminating signal loss due to oxidation or corrosion.

### Certifications, Reports and Compatibility



### Applications

- Designed for use with Gigabit networks
- Patches from hub to distribution panel
- Connects workstation to wall outlet

### Features

- RJ45 connector clip protectors
- Carefully constructed and tested, to keep Near End Crosstalk (NEXT) well within acceptable limits
- Colored Hoods for departmental color coding
- Molded strain relief prevents the cable from being bent at sharp angles at the RJ45 connector, to minimize the stress at the plug termination point
- Constructed with top quality components
- High quality 24 AWG copper wire
- ETL Verified

<b>Hardware</b>	Warranty	Lifetime
	Cable Jacket Type	PVC - Polyvinyl Chloride
	Cable Type	Snagless
	Connector Plating	Gold
	Fire Rating	CMG Rated (General Purpose)
	Number of Conductors	4 pair UTP
	Wiring Standard	TIA/EIA-568-B.1-2001 T568B
<b>Performance</b>	Cable Rating	CAT6 - 650 MHz
<b>Connector(s)</b>	Connector A	1 - RJ-45 Male
	Connector B	1 - RJ-45 Male
<b>Physical Characteristics</b>	Cable Length	1 m [3.3 ft]
	Color	Blue
	Conductor Type	Stranded Copper
	Product Length	1 m [3.3 ft]
	Weight of Product	45 g [1.6 oz]
	Wire Gauge	24 AWG
<b>Packaging Information</b>	Package Height	12 mm [0.5 in]
	Package Length	22 cm [8.7 in]
	Package Quantity	1
	Package Width	20 cm [7.9 in]
	Shipping (Package) Weight	0.1 kg [0.1 lb]
<b>What's in the Box</b>	Included in Package	1 - 1 m Blue Snagless Cat6 UTP Patch Cable - ETL Verified

Product appearance and specifications are subject to change without notice.