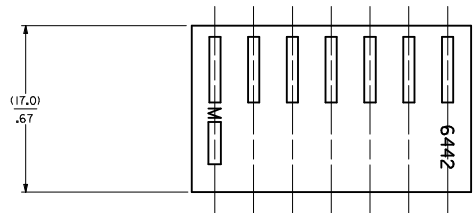


SECTION "C-C"



NO. OF CKT'S.	DIM. A	DIM. B
1		(4.78+.18)
2	(3.96+.13)	(8.74+.18)
3	.156+.005	.344+.007
4	(7.92+.13)	(12.70+.18)
5	.312+.005	.500+.007
6	(11.89+.13)	(16.66+.18)
7	.468+.005	.656+.007
8	(15.85+.13)	(20.62+.18)
9	.624+.005	.812+.007
10	(19.81+.13)	(24.59+.18)
11	.780+.005	.968+.007
12	(23.77+.13)	(28.55+.18)
13	.936+.005	1.124+.007
14	(27.74+.25)	(32.51+.30)
15	1.092+.010	1.280+.012
16	(31.70+.25)	(36.47+.30)
17	1.248+.010	1.436+.012
18	(35.66+.25)	(40.44+.30)
19	1.404+.010	1.592+.012
20	(39.62+.25)	(44.40+.30)
21	1.560+.010	1.748+.012
22	(43.59+.25)	(48.36+.30)
23	1.716+.010	1.904+.012
24	(47.55+.30)	(52.32+.36)
	1.872+.012	2.060+.014
	(51.51+.36)	(56.29+.41)
	2.028+.014	2.216+.016
	(55.47+.36)	(60.25+.41)
	2.184+.014	2.372+.016
	(59.44+.36)	(64.21+.41)
	2.340+.014	2.528+.016
	(63.40+.36)	(68.17+.41)
	2.496+.014	2.684+.016
	(67.36+.36)	(72.14+.41)
	2.652+.014	2.840+.016
	(71.32+.36)	(76.10+.41)
	2.808+.014	2.996+.016
	(75.29+.46)	(80.06+.51)
	2.964+.018	3.152+.020
	(79.25+.46)	(84.02+.51)
	3.120+.018	3.308+.020
	(83.21+.46)	(87.99+.51)
	3.276+.018	3.464+.020
	(87.17+.46)	(91.95+.51)
	3.432+.018	3.620+.020
	(91.14+.46)	(95.91+.51)
	3.588+.018	3.776+.020

- NOTES:
1. MATERIAL A: NYLON 6/6 UL94V-2. COLOR: NATURAL
  2. FINISH: N/A
  3. THIS PART COMPLIES WITH PRODUCT SPECIFICATION PS-40-02.
  4. PACKAGING SPECIFICATION: PK-6442-001
  5. HOUSING SHOWN ABOVE IS STANDARD HOUSING WITH NO OPTIONS.
  6. THIS HOUSING FOR USE WITH TERMINAL NO., 45570-x, (18-20 GA.) WITH (3.12)/.123 MAX. INSULATION DIA. 6838-x, (18-24 GA.) WITH (2.79)/.110 MAX. INSULATION DIA. 7258-x, (22-26 GA.) WITH (1.65)/.065 MAX. INSULATION DIA.
  7. LAST CIRCUIT I.D. NOT PRESENT ON 2-3 CIRCUIT HOUSINGS AND MAY OR MAY NOT BE PRESENT ON 4 CIRCUIT HOUSINGS AND LARGER.
  8. THIS PART CONFORMS TO CLASS B REQUIREMENTS OF COSMETIC SPECIFICATION PS-45499-002.
  9. SEE SHEET 2 FOR OPTIONS.
  10. TEXT ON PART IS FOR REFERENCE ONLY. TEXT AND TEXT LOCATION MAY VARY DEPENDING ON PART NUMBER AND/OR TOOL.

HOUSING OPTIONS

CODE	HOOKS	SIDE HOOKS	RAMP
BLANK	NONE	NONE	NONE
A	NONE	YES	NONE
R	NONE	NONE	FRICITION
B	NONE	NONE	TYPE B
C	NONE	NONE	TYPE C

6442-\*N-\*-\*-\*

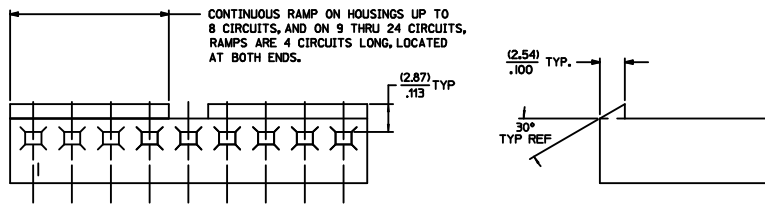
VOLTAGE RATING OPTION  
BLANK=NONE  
V= '250 VAC' ON HOUSING

MAT'L OPTION  
BLANK= MATERIAL A (SEE NOTE 1)

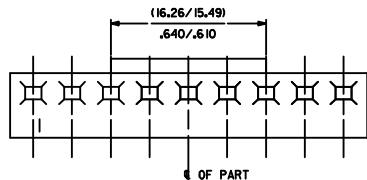
MOLDED VOID CODE  
Z=NO VOIDS  
A=CKT. 1 VOID,  
B=CKT. 2 VOID, ETC.  
5=1ST MULTIPLE VOID,  
52=2ND MULTIPLE VOID, ETC.

NO. OF CKT'S.

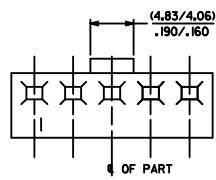
<b>NOTE 10 ADDED</b> IEC NO: IUP2018-0013 DRAWINGS CHYD: APPR: SHWARG 2017/07/28	QUALITY SYMBOLS	GENERAL TOLERANCES (UNLESS SPECIFIED)	DIMENSION STYLE	SCALE	DESIGN UNITS	THIRD ANGLE PROJECTION
	▽=0	mm INCH	MM/IN	---	INCH	
	▽=0	4 PLACES ±.010	DRAWN BY	DATE	TITLE	
	▽=0	3 PLACES ±.025 ±.014	POLGAR	1986/12/03	KK (3.96)/.156 TRIFURCON CRIMP TERMINAL HOUSING 6442 SERIES	
	1 PLACE ±.036	2 PLACES ±.025 ±.014	PATEL	1986/12/03	molex	
	0 PLACE ±	0 PLACE ±	APPROVED BY	DATE	DOCUMENT NO.	SHEET NO.
			LENZ	1986/12/03	SD-6442	1 OF 4
		ANGULAR ±1/2°	MATERIAL NO.			
		DRAFT WHERE APPLICABLE MUST REMAIN WITHIN DIMENSIONS	SEE CHART			
			THIS DRAWING CONTAINS INFORMATION THAT IS PROPRIETARY TO MOLEX INCORPORATED AND SHOULD NOT BE USED WITHOUT WRITTEN PERMISSION			



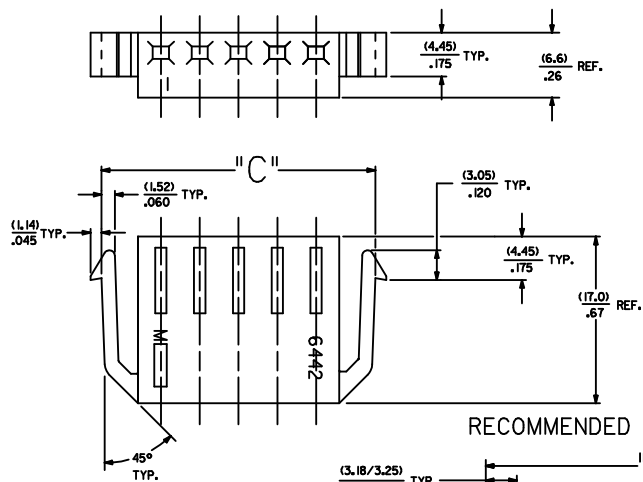
STD. RAMP OPTION CODE "R"



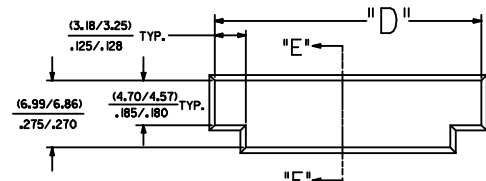
SELECTIVE RAMP OPTION CODE "C"



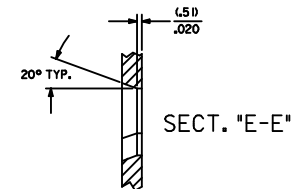
SELECTIVE RAMP OPTION CODE "B"



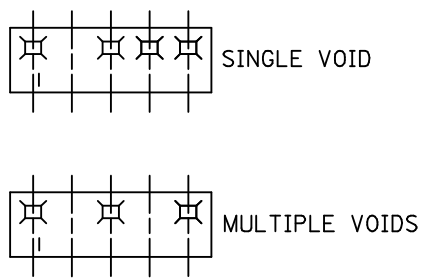
SIDE HOOKS OPTION CODE "A"



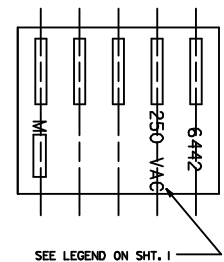
RECOMMENDED (2.03)/.080 THICK PANEL OPENING.



SECT. "E-E"



MOLDED VOIDS  
SEE LEGEND ON SHT. 1  
SEE CHART FOR VOID CKT. LOCATIONS



OPT. VOLTAGE RATING

NO. OF CKT'S.	DIM. "C"	DIM. "D"
2	(16.48/15.60) .643/.614	(15.47/15.34) .609/.604
3	(20.45/19.56) .805/.770	(19.43/18.30) .765/.760
5	(28.37/27.48) 1.117/1.082	(27.36/27.23) L077/1.072

<b>NOTE 10 ADDED</b> IEC NO: IUP2018-0013 DATE: 2017/07/06 DRAWN BY: JUP CHECKED BY: JUP APPR: SHWARG DATE: 2017/07/28	<b>QUALITY SYMBOLS</b> ▽=0 ▽=0 ▽=0	<b>GENERAL TOLERANCES (UNLESS SPECIFIED)</b> <table border="1"> <tr> <th></th> <th>mm</th> <th>INCH</th> </tr> <tr> <td>4 PLACES</td> <td>±.01</td> <td>±.0005</td> </tr> <tr> <td>3 PLACES</td> <td>±.02</td> <td>±.0010</td> </tr> <tr> <td>2 PLACES</td> <td>±.05</td> <td>±.0025</td> </tr> <tr> <td>1 PLACE</td> <td>±.10</td> <td>±.0050</td> </tr> <tr> <td>0 PLACE</td> <td>±.15</td> <td>±.0075</td> </tr> </table>		mm	INCH	4 PLACES	±.01	±.0005	3 PLACES	±.02	±.0010	2 PLACES	±.05	±.0025	1 PLACE	±.10	±.0050	0 PLACE	±.15	±.0075	<b>DIMENSION STYLE</b> MM/IN	<b>SCALE</b> ---	<b>DESIGN UNITS</b> INCH	THIRD ANGLE PROJECTION	DRAWN BY: POLGAR DATE: 1986/12/05	<b>TITLE</b> KK (3.96)/156 TRIFURCON CRIMP TERMINAL HOUSING 6442 SERIES
				mm	INCH																					
4 PLACES	±.01	±.0005																								
3 PLACES	±.02	±.0010																								
2 PLACES	±.05	±.0025																								
1 PLACE	±.10	±.0050																								
0 PLACE	±.15	±.0075																								
CHECKED BY: PATEL DATE: 1986/12/05	APPROVED BY: LENZ DATE: 1986/12/05																									
MATERIAL NO. SEE CHART							DOCUMENT NO. SD-6442	SHEET NO. 2 OF 4																		

THIS DRAWING CONTAINS INFORMATION THAT IS PROPRIETARY TO MOLEX INCORPORATED AND SHOULD NOT BE USED WITHOUT WRITTEN PERMISSION



# Mouser Electronics

Authorized Distributor

Click to View Pricing, Inventory, Delivery & Lifecycle Information:

[Molex:](#)

[26-03-4032](#)