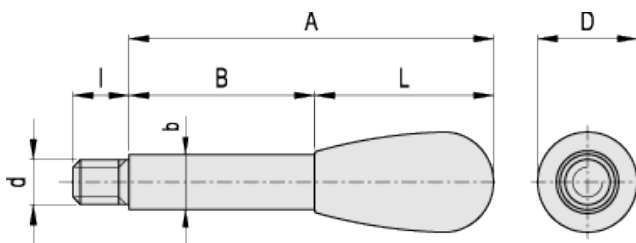


BL.368

Lever arms



ELESA Original design



Elesa Standards		Main dimensions							Weight
Code	Description	A	D	L	B	b	d _{6g}	l	g
4001	BL.368/10x57	57	20	32	25	10	M8	9	33
4002	BL.368/10x67	67	20	32	35	10	M8	9	39
4003	BL.368/10x77	77	20	32	45	10	M8	9	45
4004	BL.368/10x107	107	20	32	75	10	M8	9	64
4005	BL.368/10x137	137	20	32	105	10	M8	11	83
4101	BL.368/12x79	79	26	42	37	12	M10	14	68
4102	BL.368/12x95	95	26	42	53	12	M10	14	82
4103	BL.368/12x142	142	26	42	100	12	M10	14	125
4104	BL.368/12x180	180	26	42	138	12	M10	14	157
4201	BL.368/14x100	100	33	55	45	14	M12	15	124
4202	BL.368/14x135	135	33	55	80	14	M12	15	160
4203	BL.368/14x175	175	33	55	120	14	M12	15	220
4301	BL.368/16x70	70	33	55	15	16	M14	15	100
4302	BL.368/16x108	108	33	55	53	16	M14	15	158
4303	BL.368/16x129	129	33	55	74	16	M14	15	190
4304	BL.368/16x155	155	33	55	100	16	M14	15	232

Arm
Matte chrome-plated steel.

Handle
Type [I.222](#), phenolic based (PF) Duroplast, black colour, glossy finish. Resistant to solvents, oils, greases and other chemical agents. Fixed to the arm, not removable.



ELESA models all rights reserved in accordance with the law. Always mention the source when reproducing our drawings.