



GE SERIES

HIGH PERFORMANCE IEC CONNECTOR FILTERS



INTRODUCTIONS

1. A high performance general purpose filter with an IEC connector providing effective EMI suppression.
2. Bleeder resistor can be added with suffix "-R" on part numbers, except "G3H", "G3V", "W3V", "G3J", "W3J", types.
3. All part numbers are UL recognized, CAS certified and VDE approved.
4. With optional Y-Cap from 100pF to 3300pF.

COMPONENTS

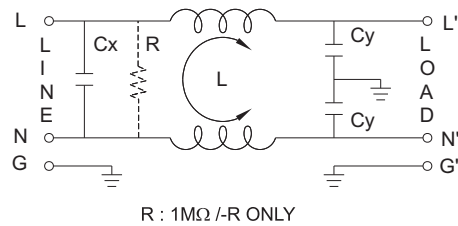
PART NO.	Cx (uF)	L (mH)	Cy (pF)	R (Ω)	
01GEEG3E/W3E/-R	0.1	6.5	2200	1M	
01GEEG3H/G3V/W3V		3	3300	-	
01GEEG3S/-R		10.5			
03GEEG3E/W3E/W3ES/-R		2.5	2.2	2200	1M
03GEEG3U/-R					
•03GEEW3ES/-R		4	2.4	3300	-
03GEEG3H/G3V/W3V					
03GEEG3S/-R		2.4	2.2	1M	
•03GEEG3Q/W3Q-R					
03GEEW3J		0.8	2.2	-	
03GEEH3J					
06GEEG3E/W3E/W3ES/-R		1.05	0.2	2200	1M
06GEEG3U/-R					
06GEEG3H/G3V/W3V		1.5	0.3	3300	-
06GEEG3S/-R					
••06GEEG3Q/W3Q-R		0.4	0.2		
•••10GEEG3C/W3C/-R					
10GEEG3E/W3E/W3ES/-R		0.2	0.3		
10GEEG3S/-R					
*10GEEG3Q/W3Q-R		0.2	0.3		
10GEEG3U/-R					
**15GEEG3E/W3E/-R	0.3	0.3			
***20GEEG3E/W3E/-R					

- UL, CSA approved to 4A 115/250V
- UL, CSA approved to 8A 115/250V
- VDE approved to 8A/250V
- * UL, CSA approved to 13A 115/250V
- ** VDE approved to 10A/250V
- *** VDE approved to 16A/250V

SPECIFICATIONS

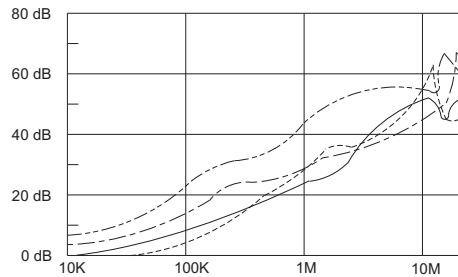
1. Maximum leakage current each line-to-ground @ 115VAC 60Hz: 0.25mA @ 250VAC 50Hz: 0.45mA
2. Hipot rating (one minute) line-to-ground: 2250VDC line-to-line: 1450VDC
3. Operating frequency: 50/60Hz
4. Rated voltage: 115/250VAC

ELECTRICAL SCHEMATIC

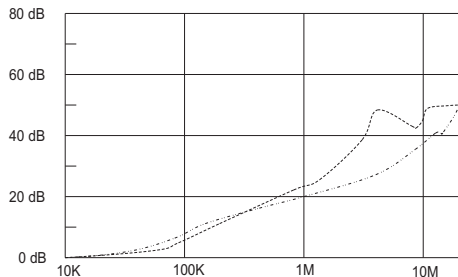


INSERTION LOSS (TYPICAL)

03GEEG3E ----- COMMON MODE ----- DIFF. MODE
06GEEG3E ----- COMMON MODE ----- DIFF. MODE

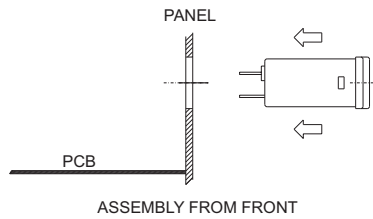


20GEEG3E ----- COMMON MODE ----- DIFF. MODE



MINIMUM INSERTION LOSS IN dB

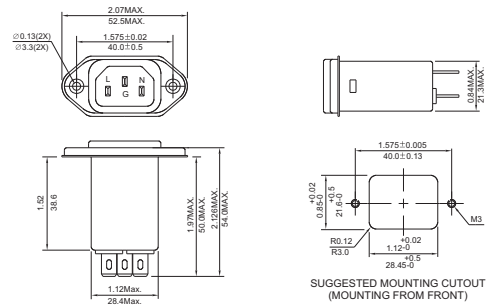
CURRENT RATING	COMMON MODE (L-G) IN 50 OHM SYSTEM					
	FREQUENCY-MHz					
	.15	.50	1.0	5.0	10	30
1A(E)(S)	28	35	38	38	40	40
1A(H)	26	36	44	54	55	55
1A(G3V)	24	35	42	50	55	55
1A(W3V)	24	35	42	50	55	55
3A(E)(S)(Q)	20	25	30	38	40	40
3A(H)	24	30	38	50	55	40
3A(G3J,W3J)	20	25	30	38	40	40
3A(G3V)(W3V)	20	29	36	48	46	50
6A(E)(S)	12	18	24	35	40	40
6A(H)	15	25	28	35	45	45
6A(Q)	15	20	24	35	40	55
6A(G3V)(W3V)	14	23	30	42	45	50
10A(E)(S)	4	10	13	28	35	40
10A(C)	10	15	15	25	30	35
10A(Q)	10	12	15	30	32	45
15A(E)	4	10	13	28	35	40
20A	8	10	15	25	30	35



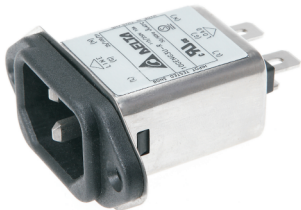
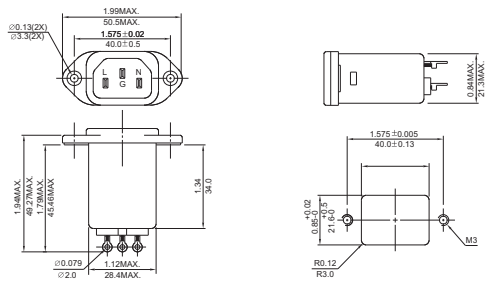
MECHANICAL CONSTRUCTION



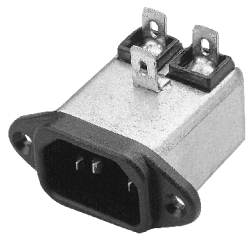
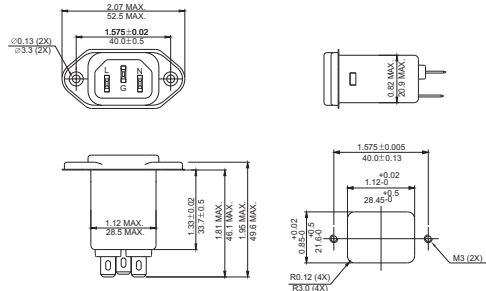
EG3E, EG3Q (Optional soldering lug or wire type)



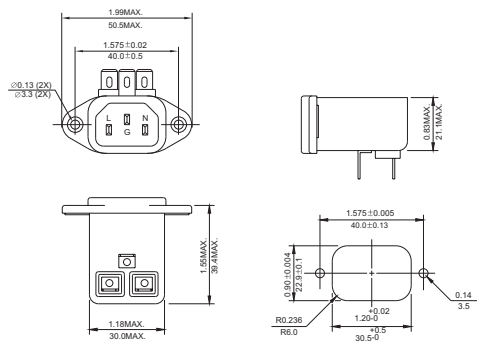
EG3S



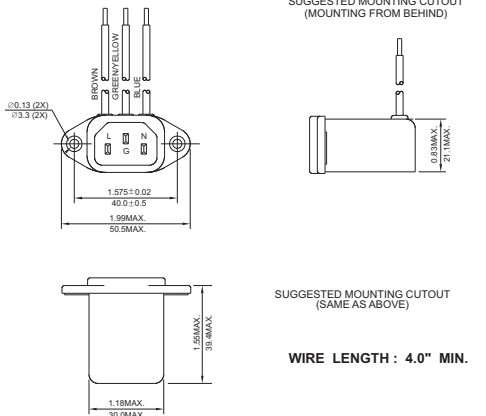
EG3U (With Compact Size)



EG3V



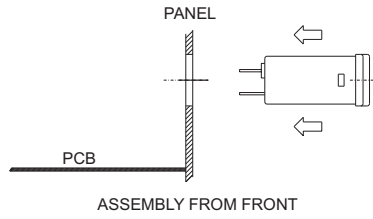
EW3V



IEC INLET FILTERS

UNIT: INCH
mm

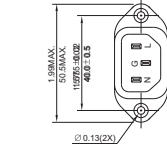
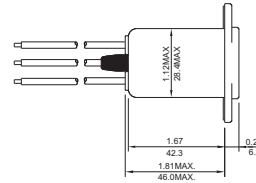
WIRE LENGTH: 4.0" MIN.



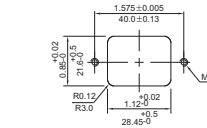
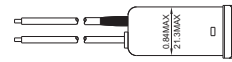
MECHANICAL CONSTRUCTION



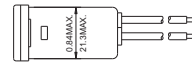
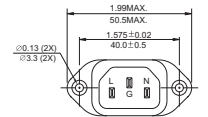
EW3J



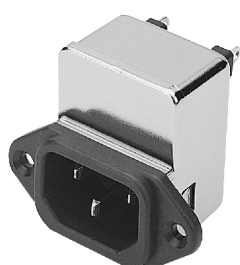
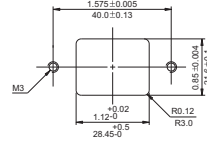
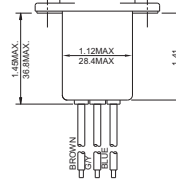
SUGGESTED MOUNTING CUTOUT (MOUNTING FROM FRONT)



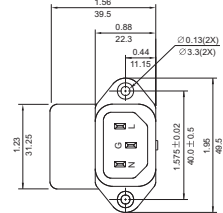
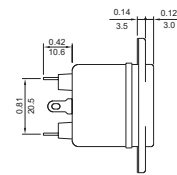
EW3ES



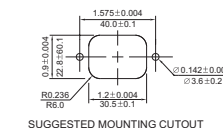
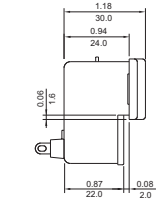
SUGGESTED MOUNTING CUTOUT



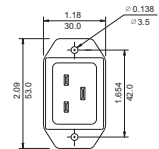
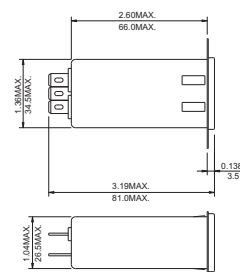
HG3J



SUGGESTED MOUNTING CUTOUT (MOUNTING FROM BEHIND)



20GEEG3E (Optional wire type)



SUGGESTED MOUNTING CUTOUT (MOUNTING FROM REVERSE)

WIRE LENGTH : 4.0" MIN.

UNIT: INCH/mm

Mouser Electronics

Authorized Distributor

Click to View Pricing, Inventory, Delivery & Lifecycle Information:

Delta Electronics:

[15GEEG3E](#) [06GEEG3E](#) [06GEEW3E](#) [10GEEW3E](#) [10GEEG3C](#) [06GEEG3Q-R](#) [06GEEG3V](#) [06GEEW3ES-R](#)
[20GEEW3E-R](#) [10GEEW3C](#) [10GEEW3C-R](#) [15GEEW3E](#) [03GEEW3Q-R](#) [03GEEW3ES-R](#) [10GEEG3C-R](#)
[06GEEG3S-R](#) [03GEEG3H](#) [10GEEG3Q](#) [10GEEW3Q-R](#) [01GEEG3E](#) [10GEEG3S-R](#) [06GEEW3Q](#) [03GEEG3S](#)
[10GEEG3S](#) [06GEEW3V](#) [03GEEG3Q](#) [01GEEG3H](#) [03GEEW3ES](#) [03GEEG3E-R](#) [10GEEG3E](#) [01GEEW3E](#)
[15GEEG3E-R](#) [01GEEG3E-R](#) [03GEEW3E](#) [20GEEG3E-R](#) [03GEEW3Q](#) [06GEEG3Q](#) [10GEEW3E-R](#) [03GEEW3J](#)
[06GEEG3H](#) [20GEEG3E](#) [01GEEW3E-R](#) [10GEEW3ES](#) [06GEEG3S](#) [10GEEG3Q-R](#) [06GEEW3ES](#) [10GEEW3Q](#)
[10GEEW3ES-R](#) [06GEEW3Q-R](#) [20GEEW3E](#) [15GEEW3E-R](#) [10GEEG3E-R](#) [03GEEW3E-R](#) [06GEEW3E-R](#)
[03GEEG3S-R](#) [03GEEG3V](#) [06GEEG3E-R](#) [03GEEW3V](#) [03GEEG3E](#) [03GEEG3Q-R](#)