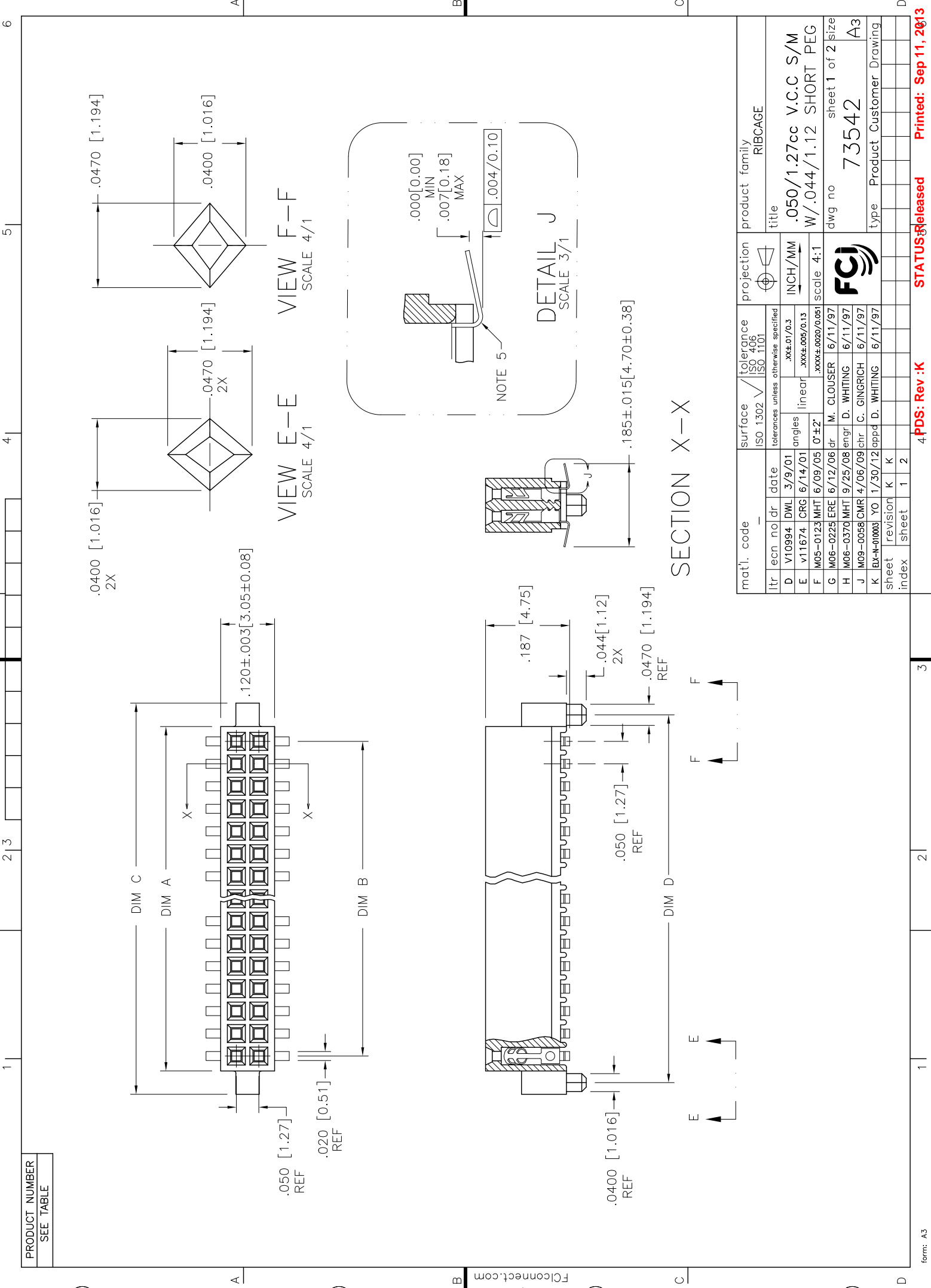


PRODUCT NUMBER
SEE TABLE



mat'l. code		surface		tolerance		projection		product family	
-		ISO 1302		ISO 406		ASME Y14.5		RIBCAGE	
itr		ecn no		dr		date		title	
D		V10994		DWL		3/9/01		.050/1.27cc V.C.C S/M	
E		V11674		CRG		6/14/01		W/.044/1.12 SHORT PEG	
F		IM05-0123		MHT		6/09/05		dwg no	
G		IM06-0225		ERE		6/12/06		sheet 1 of 2	
H		IM06-0370		MHT		9/25/08		size	
J		IM09-0056		CMR		4/06/09		A3	
K		IBX-N-01003		YO		1/30/12		type	
sheet		revision		K		D. WHITTING		Product Customer Drawing	
index		sheet		1		2		Drawing	

PRODUCT NUMBER NOTE 6	SIZE	DIM A	DIM B	DIM C	DIM D
73542-605	2 X 5	.266/6.76	.200/5.08	.370/9.40	.3200/8.128
	2 X 10	.516/13.11	.450/11.43	.620/15.75	.5700/14.478
	2 X 15	.766/19.46	.700/17.78	.870/22.10	.8200/20.828
	2 X 20	1.016/25.81	.950/24.13	1.120/28.45	1.0700/27.178
	2 X 25	1.266/32.16	1.200/30.48	1.370/34.80	1.3200/33.528
	2 X 30	1.516/38.51	1.450/36.83	1.620/41.15	1.5700/39.878
	2 X 35	1.766/44.86	1.700/43.18	1.870/47.50	1.8200/46.228
	2 X 40	2.016/51.21	1.950/49.53	2.120/53.85	2.0700/52.578
	2 X 45	2.266/57.56	2.200/55.88	2.370/60.20	2.3200/58.928
	2 X 50	2.516/63.91	2.450/62.23	2.620/66.55	2.5700/65.278

NOTES:

- ① HOUSING MATERIAL :
GLASS FILLED THERMOPLASTIC FLAME RETARDANT PER UL 94V-0
COLOR: NATURAL
- ② TERMINAL MATERIAL: BeCu
- ③ TERMINAL PLATING:
30u"/.76u MIN HARD GOLD OR GXT OVER Ni ON CONTACT ZONES.
100u"/.254u MIN Sn OVER Ni IN SOLDERING ZONES.
OTHERWISE GOLD FLASH OR UNPLATED.
- 4 APPLICATION INFORMATION:
A. RECOMMENDED MOUNTING PAD PATTERN IS SHOWN IN FIGURE "A".
B. MATING PINS TO BE .0176/0.447 TO .0181/0.459 THICK.
C. MATING PIN TIPS TO BE IN TRUE POSITION TO MATING GRID WITHIN .006/0.15 DIA.
D. SUGGESTED MATING PIN LENGTH .130/3.30±.010/0.25.
- ⑤ LEAD TIPS TO BE ABOVE HEEL UP TO .007/0.18 MAX. COPLANARITY TO BE MEASURED AT LOWEST POINT (HEEL).
- ⑥ ADD "LF" SUFFIX AT THE END OF PART NUMBER FOR LEAD FREE OPTION.
7. THESE PRODUCTS MEET EUROPEAN UNION DIRECTIVES AND OTHER COUNTRY REGULATION AS DESCRIBED IN GS-22-008.
8. THE HOUSING WILL WITHSTAND EXPOSURE TO 260°C PEAK TEMPERATURE FOR 20 SECONDS IN A CONVECTION, INFRA-RED OR VAPOR PHASE REFLOW OVEN. SEE APPLICATION NOTES/PROCEDURES IF THEY ARE AVAILABLE.
9. PACKAGE PER BUS-14-179 IS NO SUFFIX OR "CT" SUFFIX FOLLOWS DASH NUMBER & SEE GS-14-920 FOR LEAD FREE PACKAGING REQUIREMENTS.
10. PRODUCT SPEC PER BUS-12-087.

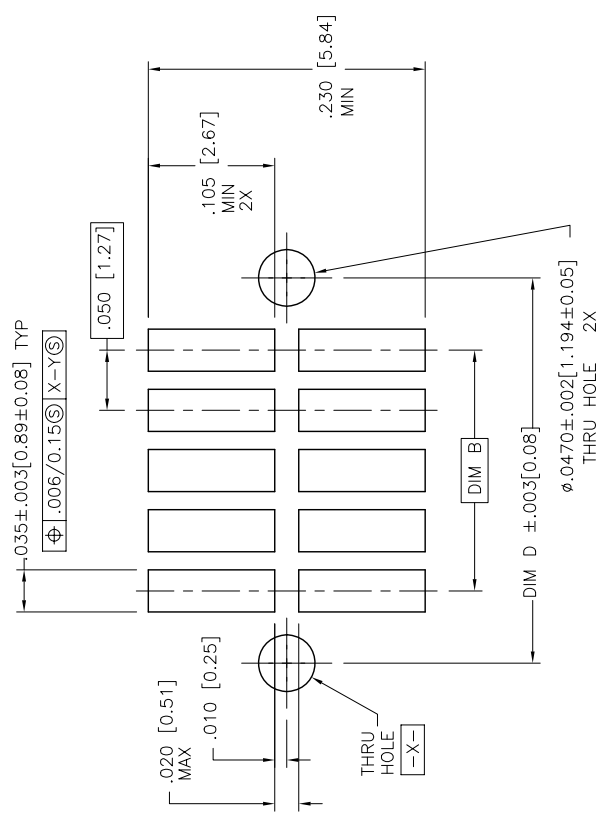


FIGURE A
RECOMMENDED
P.C.B. LAYOUT

mat'l. code		surface		tolerance		projection		product family	
ISO 1302		ISO 406		ISO 1101		RIBCAGE		title	
itr		ecn no/dr		date		angles		.050/1.27cc V.C.C S/M	
K						tolerances unless otherwise specified		W/.044/1.12 SHORT PEG	
						.xxx701/0.3		dwg no sheet 2 of 2 size	
						linear		73542	
						.xxx7005/0.13		Product Customer Drawing	
						.xxxx70020/0.051		type	
						dr M. CLOUSER 6/11/97		A3	
						enfr D. WHITING 6/11/97		sheet 2 of 2 size	
						chr C. GINGRICH 6/11/97		A3	
						appd D. WHITING 6/11/97		type	
sheet		revision						Product Customer Drawing	
index		sheet							