

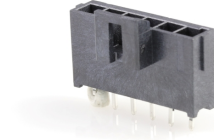
Part Number : [1722861206](#)

Product Description : Ultra-Fit Vertical Header, 3.50mm Pitch, Single Row, 6 Circuits, with Kinked Pins, 0.38µm Gold (Au) Plating, Glow-Wire Capable, Black

Series Number : 172286

Status : Active

Product Category : PCB Headers and Receptacles



Documents & Resources

Drawings

[Drawing 1722861206_sd.pdf](#)

[Packaging Design Drawing PK-172286-9001-001.pdf](#)

3D Models and Design Files

[3D Model 1722861206_stp.zip](#)

[Symbol Footprint Data 1722861106-000.zip](#)

[Symbol Footprint Data SYM-172286-1206-001.zip](#)

Specifications

[Application Specification 1723230003-000.pdf](#)

[Application Specification AS-172323-0001-001.pdf](#)

[Product Specification 1723230001-TS-000.pdf](#)

[Product Specification 1723231000-PS-CH-000.pdf](#)

[Product Specification 1723231000-PS-ES-000.pdf](#)


[Product Specification 1723231000-PS-JP-000.pdf](#)

[Product Specification 1723231000-PS-SK-000.pdf](#)

[Product Specification PS-172323-0001-001.pdf](#)

Product Environment Compliance

Compliance

GADSL/IMDS	Not Relevant
China RoHS	
EU ELV	Not Relevant
Low-Halogen Status	Low-Halogen per IEC 61249-2-21
REACH SVHC	Not Contained per D(2023)3788-DC (14 Jun 2023)
EU RoHS	Compliant per EU 2015/863

Multiple Part Product Compliance Statements

- Eu RoHS
- REACH SVHC
- Low-Halogen

Multiple Part Industry Compliance Documents

- IPC 1752A Class C
- IPC 1752A Class D
- Molex Product Compliance Declaration
- IEC-62474
- chemSHERPA (xml)

EU RoHS Certificate of Compliance

Part Details

General

Status	Active
Category	PCB Headers and Receptacles
Series	172286
Description	Ultra-Fit Vertical Header, 3.50mm Pitch, Single Row, 6 Circuits, with Kinked Pins, 0.38µm Gold (Au) Plating, Glow-Wire Capable, Black
Application	Power, Wire-to-Board
Comments	See Product Specification for maximum current rating by circuit size and wire AWG
Component Type	PCB Header
Product Family	Ultra-Fit Power Connectors
Product Name	Ultra-Fit
UPC	887191736389

Agency

CSA	LR19980
UL	E29179

Electrical

Current - Maximum per Contact	12.0A
Voltage - Maximum	600V AC (RMS)/DC

Physical

Breakaway	No
Circuits (Loaded)	6
Circuits (maximum)	6
Color - Resin	Black
Durability (mating cycles max)	200
First Mate / Last Break	No
Flammability	94V-0
Glow-Wire Capable	Yes
Guide to Mating Part	No
Keying to Mating Part	Yes
Lock to Mating Part	Yes
Material - Metal	Copper Alloy
Material - Plating Mating	Gold
Material - Plating Termination	Tin
Material - Resin	Liquid Crystal Polymer
Net Weight	1.608/g
Number of Rows	1
Orientation	Vertical
Packaging Type	Tray
PC Tail Length	3.20mm
PCB Locator	Yes
PCB Retention	Yes
PCB Thickness - Recommended	1.60mm
Pitch - Mating Interface	3.50mm
Pitch - Termination Interface	3.50mm
Plating min - Mating	0.381µm
Plating min - Termination	1.524µm
Polarized to Mating Part	Yes
Polarized to PCB	Yes
Shrouded	Fully
Temperature Range - Operating	-40° to +120°C
Termination Interface Style	Through Hole - Kinked Pin

Solder Process Data

Max-Duration	90
Lead-Free Process Capability	WAVE
Max-Cycle	2
Max-Temp	260

Mates With / Use With

Mates with Part(s)

Description	Part Number
Ultra-Fit Tangless Receptacle Housing, 3.50mm Pitch, Single Row, 6 Circuits, Black, Glow-Wire Capable	<u>1722563106</u>

This document was generated on Dec 11, 2023