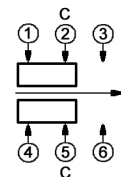
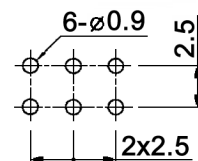


CIRCUIT DIAGRAM



C: COMMON PIN
BOTTOM VIEW

HOLE LAYOUT $\Phi 0.05$



Specifications:

Contact rating: 0.3A, 30V DC
 Contact resistance: 20mOhm max.
 Insulation resistance: 100MOhm min. at 500V DC for 1 minute
 Dielectric strength: 500V AC for 1 minute (50/60Hz, 2mA)
 Operating temperature: -25°C to +85°C
 Mechanical life: 10 000 cycles min.
 Operating force: 200gf +/-100gf
 Solderability: 230 +/-5°C, 3 +/-0.5sec.
 Soldering heat resistance: auto soldering: 260 +/-5°C, 5 +/-1sec.
 RoHS compliant
 Material:

Terminal: brass strip, silver plated
 Base: phenolic resin, natural
 Frame: SPCC, zinc
 Contact clip: C5210R-EH, silver plated
 Steel ball: carbon steel, natural
 Spring: SWC, temper
 Slider: PBT, black

Maßstab		Datum	Name	<h1>MFP 2220</h1>
Oberfläche		03/07	dr	
		knitter-switch		<h1>30 10 77</h1>
Zust	Änderung	Datum	Name	Blatt 1/1