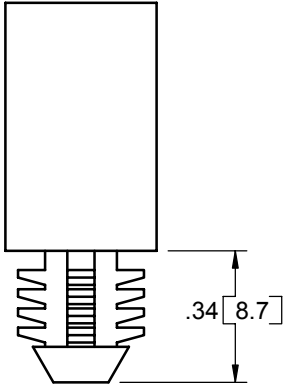
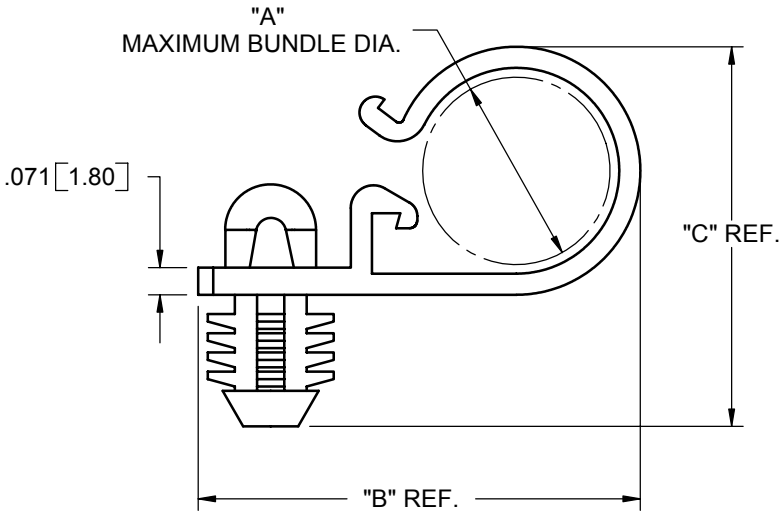
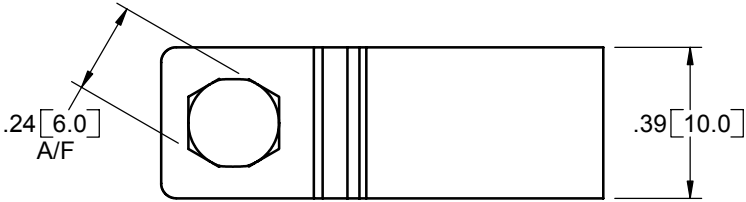


PART NO.	"A" BUNDLE DIA.	DIM. "B"	DIM. "C"
BHLWHC-500-01	1/2 [12.7]	1.15 [29.3]	1.00 [25.4]
BHLWHC-750-01	3/4 [19.0]	1.44 [36.5]	1.34 [34.1]



TO PRESS FIT INTO A .312±.002 [7.92±0.05] DIA. HOLE, IN A .250 [6.35] MINIMUM THICK PANEL

NOTES:
 1. MATERIAL: NYLON 6/6 (RMS-01).
 2. COLOR: NATURAL.

A			RELEASED FOR PRODUCTION (ECN #884)			SM	11/30/04	TITLE: BLIND HOLE LOCKING WIRE HARNESS CLIP					DWG IN IN [MM]	FINAL	
REV.			DESCRIPTION			ENGR.	DATE	CREATED USING SOLIDWORKS TOLERANCES UNLESS NOTED .XX=±.010 .XXX=±.005 FRAC.=±1/64 ANG.=±1°	FILE #: BHLWHC	DWN: SM	APP: BR	PART #		PRINT TYPE	
								SHEET: 1 OF 1	SHEET SIZE: A	DT: 11/30/04	CHKD: RDG	SEE TABLE		CA	
								RE: RICHCO, INC.	RICHCO, INC. ENG@RICHCO-INC.COM (773) 539-4060						

Mouser Electronics

Authorized Distributor

Click to View Pricing, Inventory, Delivery & Lifecycle Information:

Essentra:

[BHLWHC-750-01](#) [BHLWHC-500-01](#)