

Screw plug

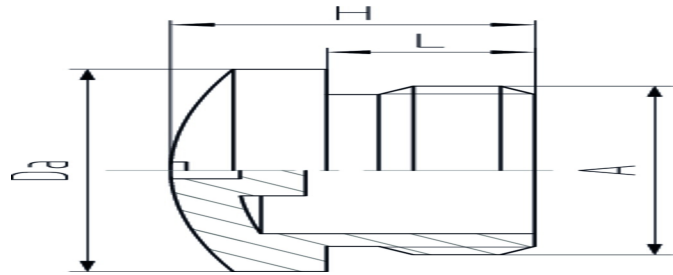
10xx PA

| | |
|-------------------|---------------------|
| Screw plug | Polyamide PA6 GF30 |
| Connecting thread | Pg as per DIN 40430 |

Properties

| | |
|-------------------|--|
| Temperature range | -40 °C +100 °C |
| Protection grade | IP54 IP66 / IP68 possible when using an additionally mounted sealing ring |

- for secure sealing of unused threaded or clearance hole



Features



RAL 7035

| A | L | H | Da | VPE | Part No. |
|---------|----|------|------|-----|----------|
| Pg 7 | 6 | 10 | 15 | 100 | 1007 PA |
| Pg 9 | 6 | 10 | 19 | 100 | 1009 PA |
| Pg 11 | 6 | 10 | 22 | 100 | 1011 PA |
| Pg 13,5 | 6 | 10 | 25 | 100 | 1013 PA |
| Pg 16 | 6 | 10 | 27 | 100 | 1016 PA |
| Pg 21 | 8 | 12,5 | 33 | 100 | 1021 PA |
| Pg 29 | 8 | 13 | 44,5 | 100 | 1029 PA |
| Pg 36 | 10 | 15 | 55,5 | 50 | 1036 PA |
| Pg 42 | 10 | 15,5 | 62,5 | 50 | 1042 PA |
| Pg 48 | 12 | 17 | 69,5 | 50 | 1048 PA |