



Cable entry with membrane for unassembled cables, Mounting type: Rasten, Length: 147 mm, Width: 58 mm, IP66, Colour: Black

RAL: 9005

Business data

Packaging unit	10
Quantity unit	PC
Weight per piece (not including packaging)	73.8 g
Weight per piece (including packaging)	73.8 g
Unit of weight	G
Customs number	39259020
Country of origin	DE
Product description	Cable Entry

28657.4

KES-R 32/24 BK

Technical data

Dimensions

Length	149.6 mm
Length of wall cutout	112 mm
Width	58 mm
Width of wall cutout	36 mm
Installation height	14.5 mm

Materials

Material	Polyamide 6.6
Glass-fibre reinforced	✓
Flammability class UL 94	V-0
Working temperature, min.	-40 °C
Working temperature, max.	90 °C
Sealing material	TPE
Halogen-free	✓
Silicone-free	✓

Further technical data

Mounting type	Snap-on
Sheet thickness min.	1.5 mm
Sheet thickness max.	2 mm
NEMA Type	1
Number of wires	32
Number of cables for cable diameters 3.2 - 6.3 mm	32
Degree of protection for snap-in mounting	IP54

Print

Colour	Black
--------	-------

Environmental Product Compliance

REACH Conform	yes
REACH Reference date	2021-07-08
REACH Candidate Substance Note	No
RoHS Conform	yes

28657.4

KES-R 32/24 BK

Approvals

cUL Recognized

cUL approval	C22.2 No. 14-18
cUL Recognized	yes

UL Recognized

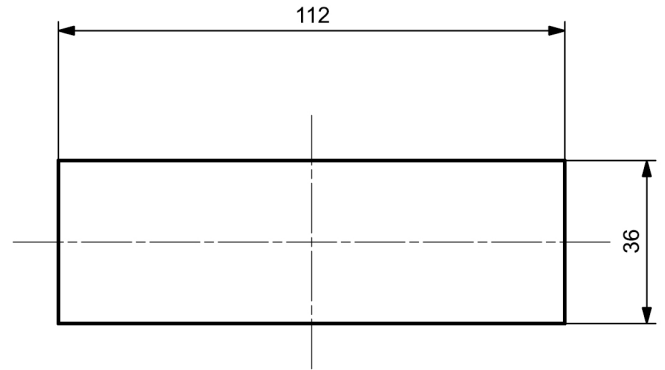
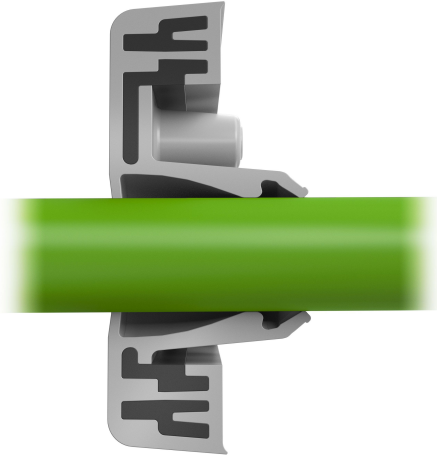
UL approval	UL 508A
UL Recognized	yes

Data sheet

28657.4

KES-R 32/24 BK

Media



CRA[®]US

28657.4

KES-R 32/24 BK

Accessories

EMC brackets



Shield-connection rail enabling mounting of shield connection clips directly on cable entry system KDS and KES, Mounting type: Screw, Length: 35,3 mm, Width: 140 mm, Height: 16 mm, Profile: 10x3 mm

detail.dataSheet.generalOrderData

Product number:	detail.dataSheet.productName	GTIN (EAN)	detail.dataSheet.
28626.0	KDS-EMV-SAB 10/24	4044211219659	500 ST

28657.4

KES-R 32/24 BK

Accessories

Sheet-metal puncher



Sheet metal puncher for rectangular openings, Dimensions opening: 112 x 36 mm, Maximum wall thickness: 2.0 mm for stainless steel sheet, Material: steel

detail.dataSheet.generalOrderData

Product number:	detail.dataSheet.productName	GTIN (EAN)	detail.dataSheet
28752.0	BL-VA KES	4044211221935	500 ST



Sheet metal puncher for rectangular openings, Dimensions opening: 112 x 36 mm, Maximum wall thickness: 2.0 mm for S 235 sheet, Material: steel

detail.dataSheet.generalOrderData

Product number:	detail.dataSheet.productName	GTIN (EAN)	detail.dataSheet
28744.0	BL KES	4044211221942	500 ST