



TMM-112-01-L-D-RA

TMM-116-02-F-S

TMM-108-01-T-D

TMM-108-03-F-Q

(2.00 mm) .0787"

TMM SERIES

# LOW-PROFILE THROUGH-HOLE HEADER

## SPECIFICATIONS

For complete specifications see [www.samtec.com?TMM](http://www.samtec.com?TMM)

**Insulator Material:** Black Liquid Crystal Polymer  
**Terminal Material:** Phosphor Bronze  
**Plating:** Sn or Au over 50 µ" (1.27 µm) Ni  
**Current Rating (SMM/TMM):** 3.2 A per row (2 pins powered)  
**Operating Temp Range:** -55 °C to +105 °C with Tin; -55 °C to +125 °C with Gold  
**Voltage Rating:** 281 VAC mated with SQW; 250 VAC mated with SQT  
**RoHS Compliant:** Yes  
**Lead-Free Solderable:** Yes

## RECOGNITIONS

For complete scope of recognitions see [www.samtec.com/quality](http://www.samtec.com/quality)



## ALSO AVAILABLE (MOQ Required)

- Other platings

**Note:** Some lengths, styles and options are non-standard, non-returnable.

## Other Solutions

**Press-fit**  
See PTT Series.

**Elevated**  
See TW Series.

**High-density**  
See TMMH Series.

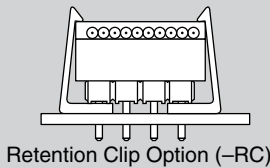
**Shrouded Four Row Vertical & Right-Angle**  
See TMMS Series.

Paste In Hole (PIH) processing. Contact Samtec ASP Group for part customization.

**Board Mates:** CLT, SQT, SQW, ESQT, TLE, SMM, MMS

**Cable Mates:** TCSD

## APPLICATION



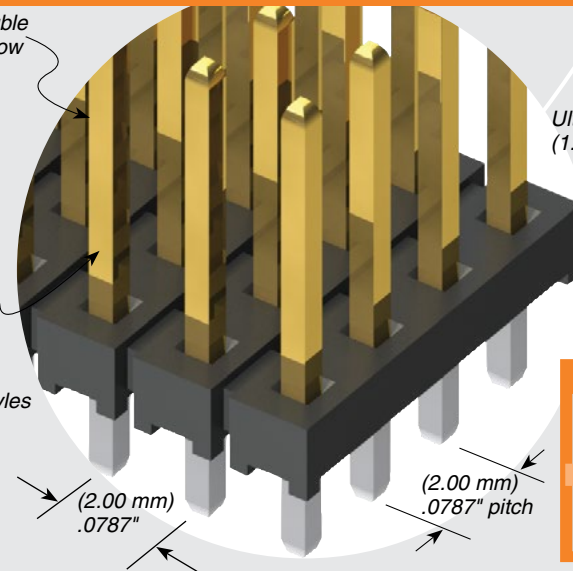
## HIGH-SPEED CHANNEL PERFORMANCE

Rating based on Samtec reference channel. For full SI performance data visit [Samtec.com](http://Samtec.com) or contact [SIG@samtec.com](mailto:SIG@samtec.com)

Single, double and quad row

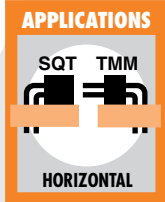
Choice of five lead styles

Ultra-low profile (1.50 mm) .059"



(2.00 mm) .0787"

(2.00 mm) .0787" pitch



## TMM 1 NO. PINS PER ROW LEAD STYLE PLATING OPTION ROW OPTION OTHER OPTION

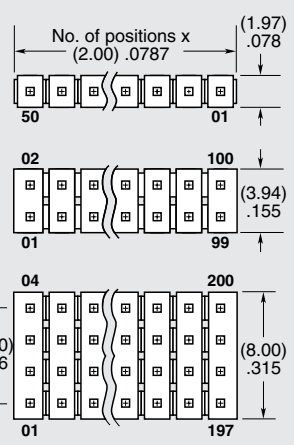
01 thru 50

Specify LEAD STYLE from chart below.

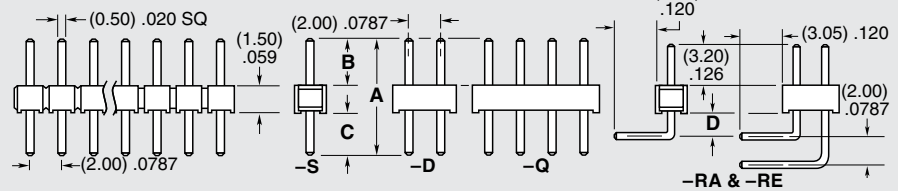
- F** = Gold flash on post, Matte Tin on tail  
**-L** = 10 µ" (0.25 µm) Gold on post, Matte Tin on tail  
**-S** = 30 µ" (0.76 µm) Gold on post, Matte Tin on tail  
**-T** = Matte Tin

- S** = Single Row  
**-D** = Double Row  
**-Q** = Four Row

- RA & -RE** = Right-angle (Lead Style -01 only) (2 positions minimum, -Q row)  
**-RC** = Retention Clip (Mates with TCSD) (Double row only, 4 positions minimum, only available -06 lead style)  
**"-XXX"** = Polarized Position (Specify position of omitted pin)



LEAD STYLE	A	B	C
-01	(3.20) .126	(3.50) .138	
-02	(8.20) .323	(3.70) (3.00) .146 .118	
-03	(4.00) .158	(2.70) .106	
-04	(5.69) .224	(1.91) .075	(2.29) .090
-05	(5.43) .214	(1.65) .065	
-06	(9.58) .377	(3.20) .126	(4.88) .192



OPTION	D
-RA	(1.27) .050
-RE	(3.56) .140

Due to technical progress, all designs, specifications and components are subject to change without notice.

# Mouser Electronics

Authorized Distributor

Click to View Pricing, Inventory, Delivery & Lifecycle Information:

## Samtec:

[TMM-104-01-L-D-RA](#) [TMM-103-03-G-S](#) [TMM-110-01-G-D](#) [TMM-110-01-S-D-RA](#) [TMM-106-03-G-D](#) [TMM-102-02-G-S](#) [TMM-105-03-G-D](#) [TMM-108-01-L-D](#) [TMM-105-01-G-S-RA](#) [TMM-102-03-S-S](#) [TMM-102-01-G-S](#) [TMM-125-01-G-D](#) [TMM-103-01-G-S](#) [TMM-103-03-S-S](#) [TMM-105-03-G-S](#) [TMM-104-03-S-S](#) [TMM-102-03-G-S](#) [TMM-115-01-L-D](#) [TMM-104-01-L-D](#) [TMM-105-01-G-D-RA](#) [TMM-112-01-L-D](#) [TMM-103-02-L-D](#) [TMM-103-01-S-D-RA](#) [TMM-110-01-L-S](#) [TMM-140-01-L-D-RA](#) [TMM-122-01-S-D](#) [TMM-102-01-G-D](#) [TMM-102-03-L-S](#) [TMM-104-01-F-D-RA](#) [TMM-104-03-L-S](#) [TMM-105-01-F-D-RA](#) [TMM-110-01-S-D](#) [TMM-106-01-S-D](#) [TMM-106-01-S-D-RA](#) [TMM-112-02-G-D](#) [TMM-104-01-S-D](#) [TMM-112-01-G-S](#) [TMM-107-01-T-S-RA](#) [TMM-103-01-T-S-RA](#) [TMM-104-01-G-S-RA](#) [TMM-105-01-G-S](#) [TMM-103-01-T-S](#) [TMM-104-03-G-D](#) [TMM-108-03-L-S](#) [TMM-110-01-G-S](#) [TMM-108-01-T-D](#) [TMM-110-01-L-D](#) [TMM-105-03-L-D](#) [TMM-108-01-G-S-RA](#) [TMM-120-01-L-D](#) [TMM-110-01-T-D](#) [TMM-120-01-L-S-RA](#) [TMM-106-01-L-D-RA](#) [TMM-108-01-L-S-RA](#) [TMM-102-03-L-D](#) [TMM-102-01-G-D-RA](#) [TMM-104-01-S-S](#) [TMM-105-03-L-S](#) [TMM-102-03-F-S](#) [TMM-103-01-S-S](#) [TMM-105-01-T-S](#) [TMM-107-03-T-S](#) [TMM-108-01-S-D](#) [TMM-110-01-F-D-RA](#) [TMM-107-01-L-D](#) [TMM-108-01-G-S](#) [TMM-116-03-L-D](#) [TMM-117-01-G-D](#) [TMM-140-03-G-D](#) [TMM-118-01-S-D](#) [TMM-114-03-L-D](#) [TMM-115-01-T-D](#) [TMM-120-03-L-D](#) [TMM-103-01-G-D-RA](#) [TMM-103-01-G-S-RA](#) [TMM-103-03-F-D](#) [TMM-104-01-T-D](#) [TMM-110-03-G-S](#) [TMM-107-03-G-D](#) [TMM-110-03-L-S](#) [TMM-114-01-G-D](#) [TMM-120-01-L-D-RA](#) [TMM-106-01-T-S-RA](#) [TMM-106-01-G-S-RA](#) [TMM-116-03-G-D](#) [TMM-111-01-G-D](#) [TMM-109-03-L-D](#) [TMM-107-01-G-D](#) [TMM-113-01-G-D](#) [TMM-120-01-S-D](#) [TMM-125-01-L-D](#) [TMM-102-03-G-D](#) [TMM-102-03-T-D](#) [TMM-102-03-T-S](#) [TMM-103-01-G-D](#) [TMM-103-01-T-D](#) [TMM-103-02-G-S](#) [TMM-103-03-L-S](#) [TMM-104-02-G-D](#) [TMM-105-03-T-D](#)