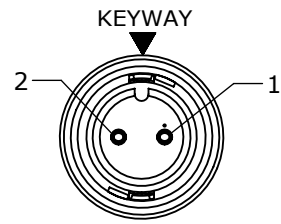


NOTES:

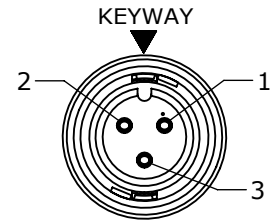
1. FINISHED CABLE ASSEMBLY TO BE COILED
2. OVERMOLD BOOT MATERIAL: PVC, BLACK
3. ELECTRICAL TEST: 100% CONTINUITY

ASS'Y P/N	NO. OF POS.	"X" DIM.
CARA62802S07990	2	6 FT. 7 IN. ±2 IN. [2M]
CARA62803S07990	3	
CARA62804S07990	4	
CARA62805S07990	5	
CARA62806S07990	6	
CARA62807S07990	7	
CARA62808S07990	8	
CARA6280XSXXX90		

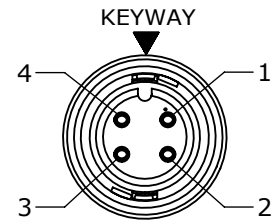
— CABLE LENGTH IN "INCHES"
— NO OF POSITIONS



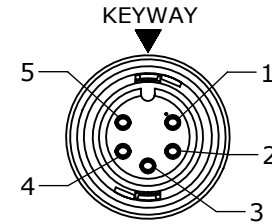
FACE VIEW
P/N: CARA62802SXXX90



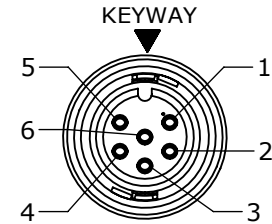
FACE VIEW
P/N: CARA62803SXXX90



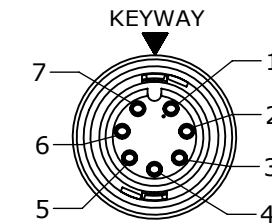
FACE VIEW
P/N: CARA62804SXXX90



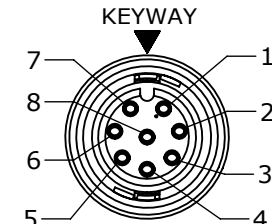
FACE VIEW
P/N: CARA62805SXXX90



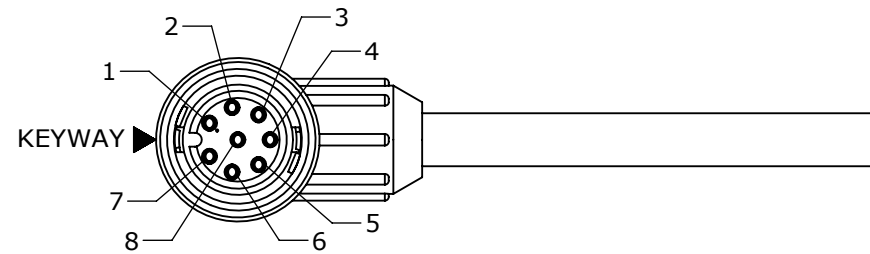
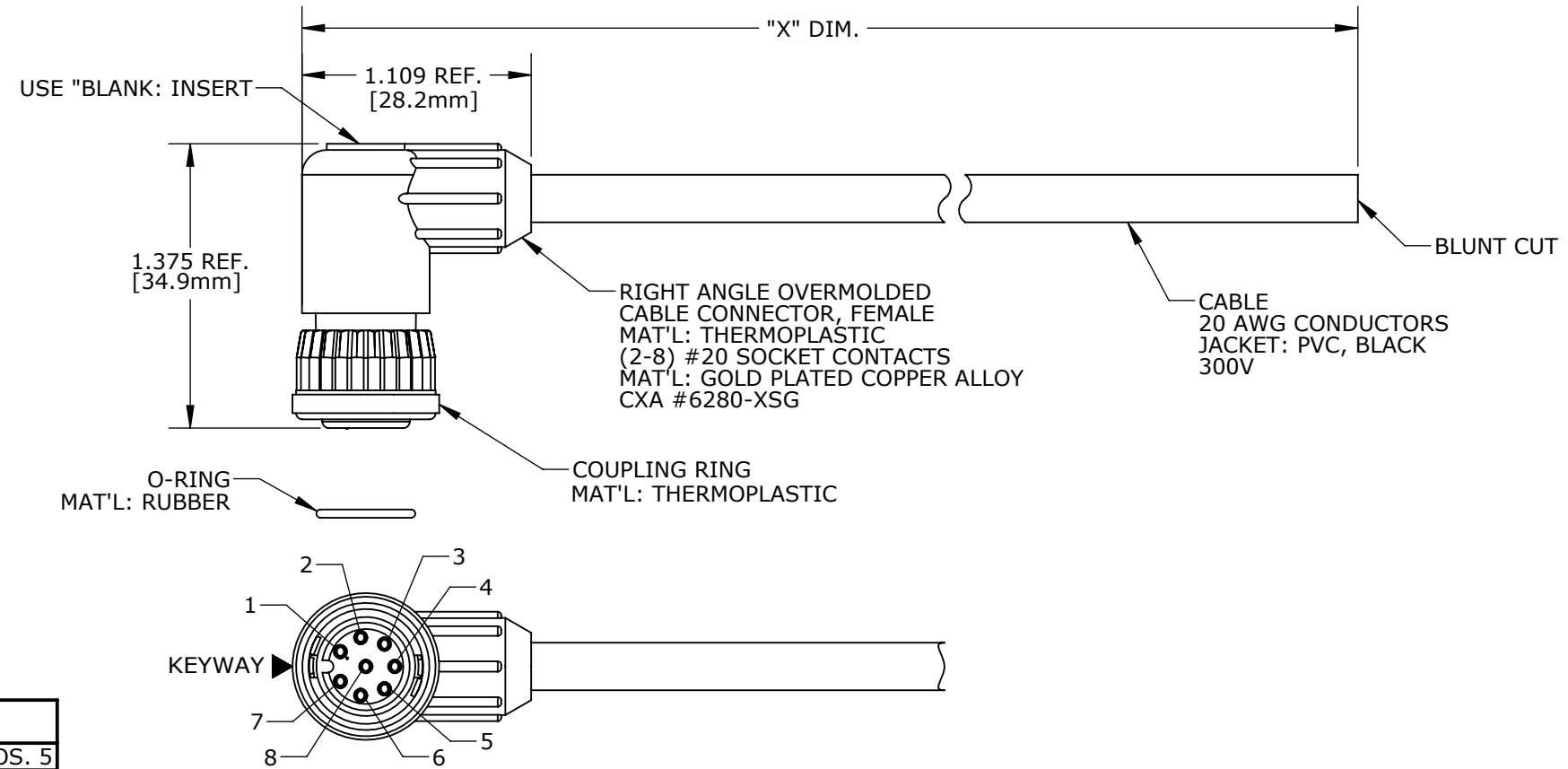
FACE VIEW
P/N: CARA62806SXXX90



FACE VIEW
P/N: CARA62807SXXX90



FACE VIEW
P/N: CARA62808SXXX90



END "A"
FACE VIEW
P/N: CARA62808SXXX90

CUSTOMER APPROVAL

THIS DOCUMENT CONTAINS CONFIDENTIAL INFORMATION PROPRIETARY TO CONXALL CORPORATION. ANY REPRODUCTION, DISCLOSURE, OR USE OF THIS DOCUMENT / INFORMATION IS EXPRESSLY PROHIBITED UNLESS AUTHORIZED IN WRITING BY CONXALL CORPORATION.

APPROVED BY: _____
DATE: _____

ASSY P/N	CABLE	COLOR CODE END "A"
CARA62802SXXX90	2/20 AWG O.D. 0.215 REF	COLOR CODE
		POS. 1 POS. 2
CARA62803SXXX90	3/20 AWG O.D. 0.220 REF	BLK WHT
		POS. 1 POS. 2 POS. 3
CARA62804SXXX90	4/20 AWG O.D. 0.235 REF	BLK WHT GRN
		POS. 1 POS. 2 POS. 3 POS. 4
CARA62805SXXX90	5/20 AWG O.D. 0.255 REF	BLK WHT GRN RED
		POS. 1 POS. 2 POS. 3 POS. 4 POS. 5
CARA62806SXXX90	6/20 AWG O.D. 0.275 REF	BLK WHT GRN RED BLU VIO
		POS. 1 POS. 2 POS. 3 POS. 4 POS. 5 POS. 6
CARA62807SXXX90	8/20 AWG O.D. 0.300 REF	BLK WHT GRN RED BLU VIO GRY
		POS. 1 POS. 2 POS. 3 POS. 4 POS. 5 POS. 6 POS. 7
CARA62808SXXX90	8/20 AWG O.D. 0.300 REF	BLK WHT GRN RED BLU VIO GRY BRN
		POS. 1 POS. 2 POS. 3 POS. 4 POS. 5 POS. 6 POS. 7 POS. 8

DIMENSIONS IN BRACKET [] ARE METRIC.

RoHS COMPLIANT

B	AN	10-27-16	UPDATED MANUFACTURING DRAWING PER ECR 9122
A	AN	06-30-16	DRAWING CREATED PER DOR 16-7414JP
REV.	INIT.	DATE	DESCRIPTION
	AN	05-26-16	ORIGINAL DRAWN BY: AN CHECKED BY: _____
ALL INFORMATION ILLUSTRATED IS THE PROPERTY OF "CONXALL CORPORATION". UNAUTHORIZED DUPLICATION OR DISTRIBUTION OF THIS DOCUMENT IS PROHIBITED.			<p>601 E. WILDWOOD VILLA PARK, IL 60181</p>
ALL UNITS ARE IN FEET, INCHES, FRACTION OF INCHES AND DECIMALS.			
APPROVED BY: _____		TITLE: CABLE ASSEMBLY (2-8) #20 SOCKET CONTACTS MINI-CON-X, R. ANGLE STANDARD PRODUCT	
SCALE	SIZE	SHEET	CUSTOMER:
NTS	B	1 OF 1	STANDARD PRODUCT
FILE:	DIRECTORY:	PART NUMBER:	REV
CARA6280XSXXX90	SLW	CARA6280XSXXX90	B

CUSTOMER PRINT

PART NUMBER: CARA6280XSXXX90

Mouser Electronics

Authorized Distributor

Click to View Pricing, Inventory, Delivery & Lifecycle Information:

Switchcraft:

[CARA62803S07990](#) [CARA62808S07990](#) [CARA62802S07990](#) [CARA62806S07990](#) [CARA62804S07990](#)
[CARA62805S07990](#)