

Technical details:

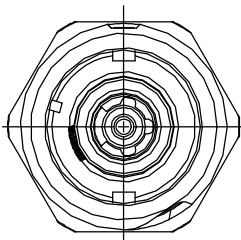
- IP protection IP67 (when mated)
- IP2X finger protected contacts

Electrical characteristics:

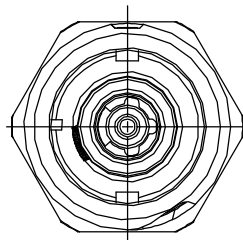
Operating Voltage: 1250V
 Rated Current: 400A (copper contact)

Variable encoding:

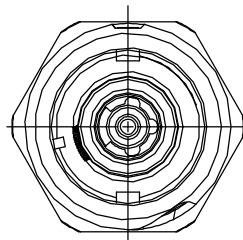
ww: E /N /L1 /L2 /L3
 xx: BR /BK /GY/BU /GR /RD /YL /WH depends on ww
 (see "color coding table" on the catalog)
 OS: Cable external diameter 15mm ±25mm



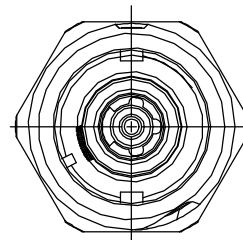
L1



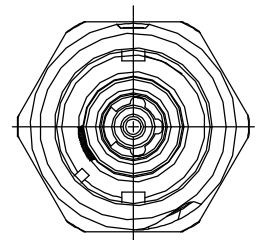
L2



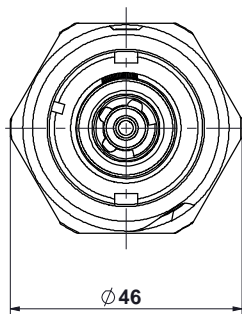
L3



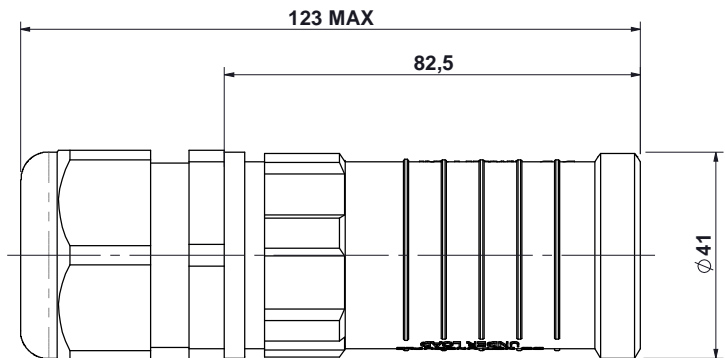
N



E



Ø46



123 MAX

82,5

Ø41

revision 0	Date 17/12/18	Note
 <p>Van-System s.r.l. Via Zambelletti 19 Baranzate - MI Italia</p>		Description SPPC HK LS ww xx C-120 OS
Attached	Drawing N° C1200-3286	Scale 1:1.5 Drawn by F. Colombo Checked Approved

This copyrighted document is the property of Van-System srl and is furnished on the condition that it is not to be disclosed, reproduced in whole or in part, or used to solicit quotations from competitive sources, or used for manufacture by anyone other than Van-System srl without written permission from Van-System srl. The information herein has been developed at Van-System's expense and may be used for engineering evaluation and incorporation into technical specifications and other documents which specify procurement of products from Van-System srl