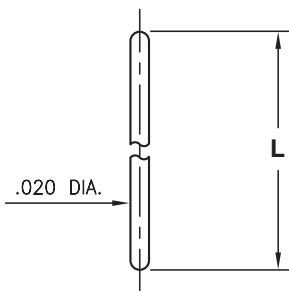


MALE PCB PINS

STRAIGHT PINS

3320

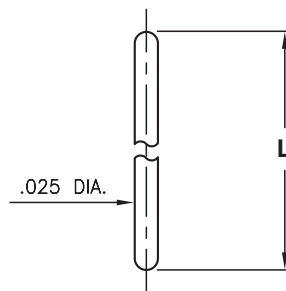
3320-X-00-XX-00-00-03-0



Basic Part Number	Length L
3320-0	.250
3320-1	.500

3325/6527

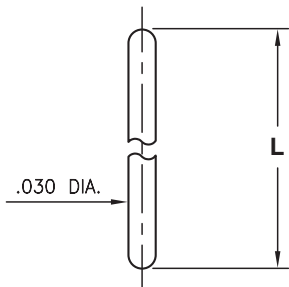
XXXX-X-00-XX-00-00-03-0



Basic Part Number	Length L
3325-0	.250
3325-1	.500
3325-2	.750
6527-0	.420

3330

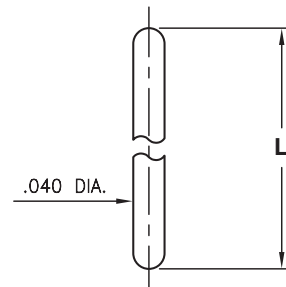
3330-X-00-XX-00-00-03-0



Basic Part Number	Length L
3330-0	.250
3330-1	.500
3330-2	.750

3340

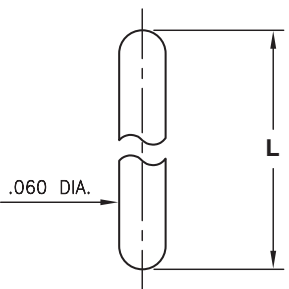
3340-X-00-XX-00-00-03-0



Basic Part Number	Length L
3340-0	.250
3340-1	.500
3340-2	.750

3560

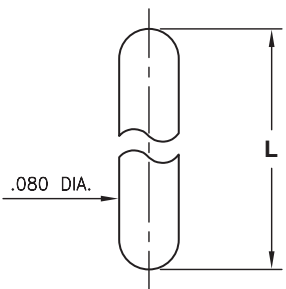
3560-X-00-XX-00-00-03-0



Basic Part Number	Length L
3560-0	.250
3560-1	.500
3560-2	.750

3580

3580-X-00-XX-00-00-03-0



Basic Part Number	Length L
3580-0	.250
3580-1	.500
3580-2	.750

SPECIFICATIONS:

Pin Material: Brass Alloy 360, 1/2 Hard
(Except where noted)

Dimensions: Inches

Tolerances On: Lengths: $\pm .005$
Diameters: $\pm .002$
Angles: $\pm 2^\circ$



ORDER CODE: XXXX - X - 00 - XX - 00 - 00 - 03 - 0

BASIC PART # →

← **SPECIFY PIN FINISH:**

- ◆ 80 200 μ " TIN OVER NICKEL (RoHS)
- ◆ 15 10 μ " GOLD OVER NICKEL (RoHS)



Mouser Electronics

Authorized Distributor

Click to View Pricing, Inventory, Delivery & Lifecycle Information:

Mill-Max:

[3725-0-14-15-00-00-03-0](#) [3720-0-14-15-00-00-03-0](#) [3740-0-14-15-00-00-03-0](#) [3730-0-14-15-00-00-03-0](#) [3340-1-00-15-00-00-03-0](#) [3340-2-00-15-00-00-03-0](#) [3580-2-00-15-00-00-03-0](#) [6527-0-00-15-00-00-03-0](#) [3560-1-00-15-00-00-03-0](#) [3560-2-00-15-00-00-03-0](#) [3580-1-00-15-00-00-03-0](#) [3580-0-00-15-00-00-03-0](#) [3560-0-00-15-00-00-03-0](#) [3330-0-00-15-00-00-03-0](#) [3330-0-00-80-00-00-03-0](#) [3330-1-00-15-00-00-03-0](#) [3330-2-00-15-00-00-03-0](#)