



## ***MGD2000 Brushless Micropump***



**RS MICROPUMPS: 8170766, 9147016, 1253564, 1253565,**  
(Patents Pending, Quality Assured ISO 9001, RoHS compliant)

### ***INTRODUCTION***

The RS MGD2000 Micropump is a high-quality miniature pump for liquids. It is highly efficient, small and lightweight. The solid construction and wide temperature tolerance, enable it to perform reliably even in hostile environments. Your Micropump can be quickly and easily installed into the smallest spaces, in a vast range of laboratory, prototype and production equipment. It is self-priming, and the direction of flow is reversible.

### ***ELECTRICAL CONNECTION***

The M510 Micropump is driven by sensorless brushless motor technology and will require an electronic driver circuit to be used (RS 1253564 and 1253565 includes the EQi-MG2 brushless driver. RS 8170766 and 9147016 are pumps only and require a driver).

3 wire DC Sensorless Brushless Motor  
Supply Voltage: 6-28V (EQi-MG2)

### ***RS Micropumps Electronic Driver Units***

If a brushless motor controller is not available, then RS recommend the EQi-MG2 driver board. This is a small lightweight device which are installed in-line with the pump's own wiring. The EQi-MG2 offers speed and flow control via on-board potentiometer or external 0-4v analogue control with a wide 6-28v input voltage range in which the driver will monitor and govern speed accordingly.

### ***Materials***

Wetted materials include – Anodised 6000 Series Aluminium, 316 Stainless Steel, PEEK, PET, Ertalyte, Nickel, FKM

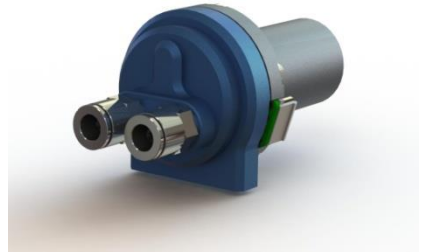


## ***MGD2000 Brushless Micropump***



### ***TUBING CONNECTION***

The MGD2000 series as standard are supplied with push-fit connectors suitable for 8mm OD tubing. The connectors are removable. The pump housing has 2 x G1/8 (1/8<sup>th</sup> BSP) threaded ports on its front face that are suitable for a wide range of tubing connectors.



### ***Notes on Operation***

Micropump life is increased at lower operating voltage/speed. It is not advised to run your Micropump when dry for long periods.

### ***Maximum Operating Pressure***

MGD2000S	-	10.0Bar (147psi)
MGD2000F	-	6.0Bar (88psi)

### **CAUTION**

Do not exceed the maximum operating pressure for your pump  
Do not exceed the maximum operating current draw of 6.5amps.  
Exceeding these limits may cause damage to the Micropump.