

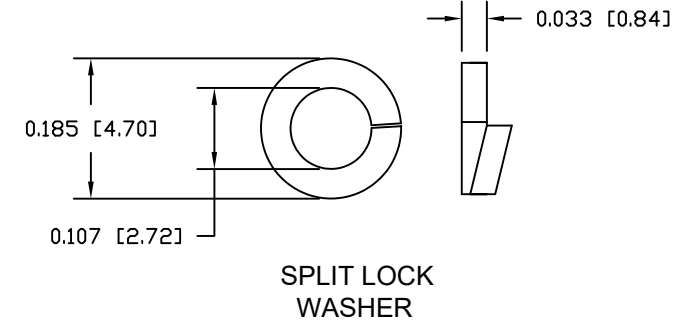
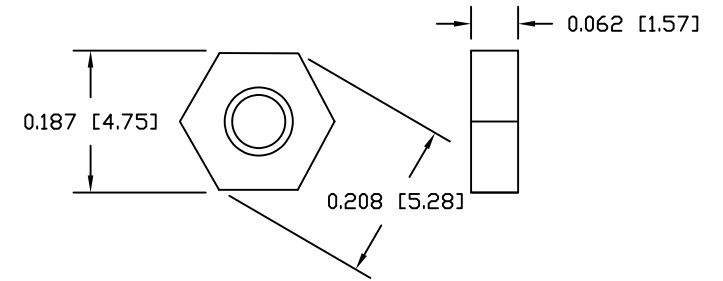
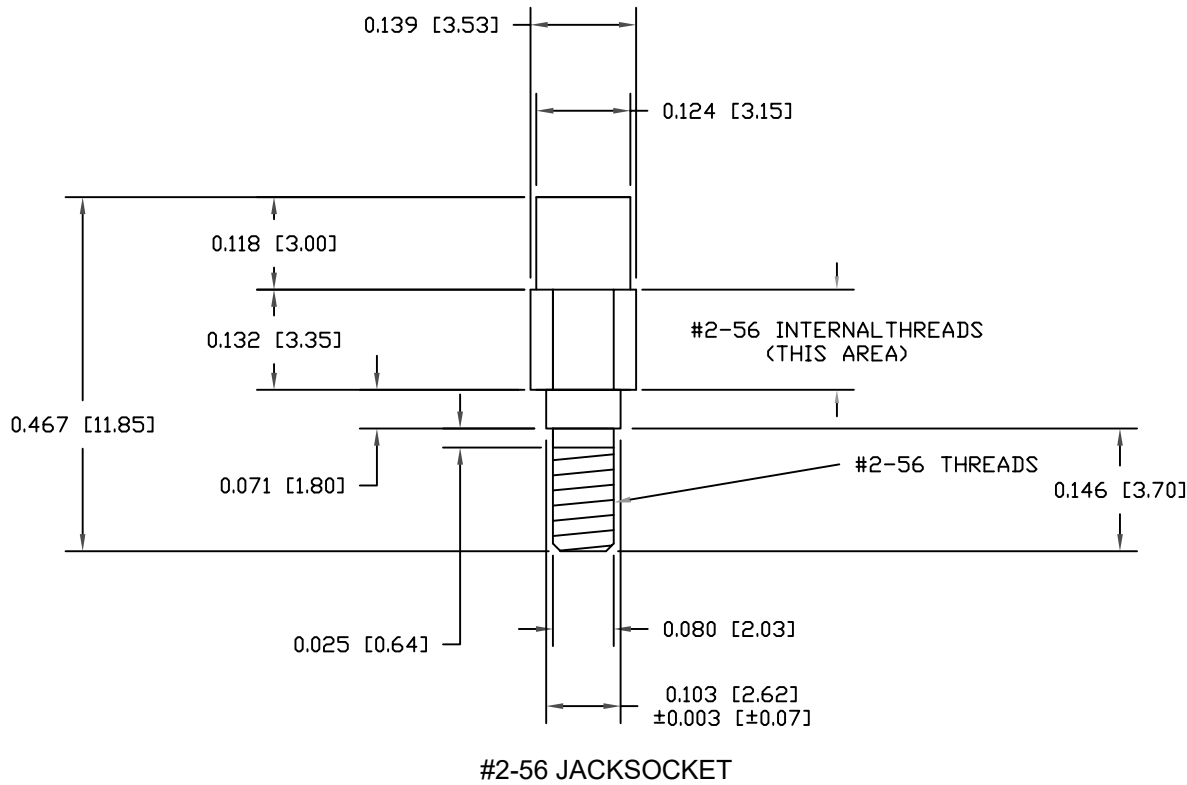
MATERIAL:

JACKSOCKETS: NICKEL PLATED BRASS (3604)
 SPLIT LOCK WASHER: ZINC PLATED STEEL
 #2-56 NUT: ZINC PLATED STEEL

RECOMMENDED MAX. TORQUE = 30 in-oz

KIT INCLUDES:

- (2) #2-56 JACKSOCKETS
- (2) SPLIT LOCK WASHERS
- (2) #2-56 NUTS



DO NOT SCALE FROM DRAWING



THESE DRAWINGS AND SPECIFICATIONS ARE THE PROPERTY OF NorComp AND SHALL NOT BE REPRODUCED, COPIED OR USED AS THE BASIS FOR THE MANUFACTURE OF SALE OF APPARATUS WITHOUT WRITTEN PERMISSION.

DRAWN: M. SIGMON		DATE: 08-09-12	
SCALE: NTS	SHEET 1	OF 1	REV 4
DWG NO. 160-380-001R031			

RoHS COMPLIANT

NorComp