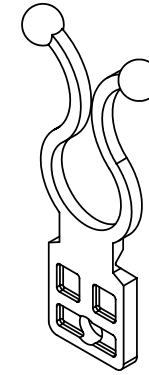
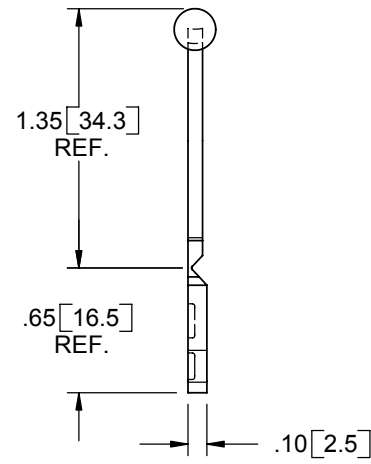
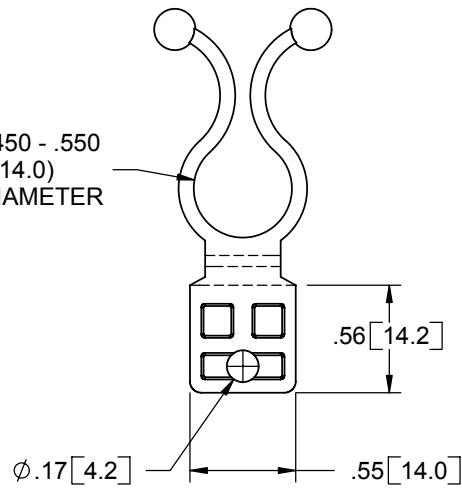


TO HOLD .450 - .550  
(11.4 - 14.0)  
BUNDLE DIAMETER



NOTES:

1. MATERIAL: NYLON 6/6 (RMS-01)
2. COLOR: NATURAL.
3. MOUNTING WITH A #8 (M4) SCREW OR RIVET

B	ADDED BUNDLE DIA. RANGE, ECN #633	SM	05.22.03
A	RELEASED FOR PRODUCTION	SM	03/17/03
REV.	DESCRIPTION	ENGR.	DATE

TITLE: TWIST LOK, HINGED-500						DWG IN IN [MM]	
CREATED USING SOLIDWORKS		FILE #: TLH-500	DWN: SM	APP: DLC		FINAL	
TOLERANCES UNLESS NOTED .XX=±.010 .XXX=±.005 FRAC.=±1/64 ANG.=±1°		SHEET: 1 OF 1	SHEET SIZE: A	DT: 02/24/03	CHKD: DJZ	PART #	PRINT TYPE
		RE: RICHCO, INC.	RICHCO, INC. ENG@RICHCO-INC.COM (773) 539-4060		TLH-500-01		CA

# Mouser Electronics

Authorized Distributor

Click to View Pricing, Inventory, Delivery & Lifecycle Information:

[Essentra:](#)

[TLH-500-01](#)