

Materials

Eyelet: Brass, silver plated

Lead: Copper alloy, silver plated & SAC 387 solder dipped

Dielectric: X7R

Mounting Details

Mounting hole: Ø4 -0/+0.2

Mounting pitch: 5 min

Voltage Rating

-55°C to +85°C : 200Vdc

+125°C : 100Vdc

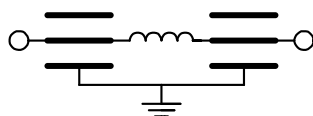
Current Rating

10A dc to 400Hz

ELECTRICAL CHARACTERISTICS

PART No.	CAPACITANCE (pF) (MIN)	DISSIPATION (MAX)	IR (MΩ) (MIN) @ 100Vdc	INSERTION LOSS (dB) (TYPICAL) @ NO LOAD				COLOUR CODE
				10MHz	100MHz	1GHz	10GHz	
SLT/P/1500/RoHS	1500	0.03	1000	5	45	70	70	BLUE
SLTP/5000/RoHS	5000	0.03	1000	20	65	70	70	RED

CIRCUIT SCHEMATIC : PI SECTION



The Group currently holds the following quality standards and approvals:

AS9100 Rev D

ISO9001:2015

ISO14001:2015