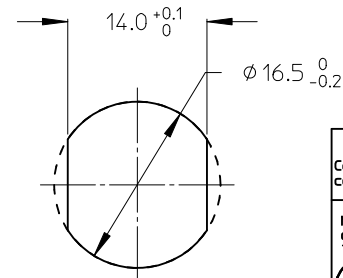
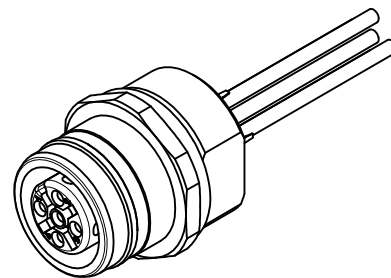


ITEM	COMPONENT	MATERIAL	FINISH
1	REC SHELL	BRASS	NICKEL PLATED
2	INSERT	PUR	BLACK
3	CONTACT	BRASS / GOLD	CuZn Ni/ Au
4	WIRES	COPPER/PVC	NONE
5	O-RING	NBR	BLACK
6	O-RING	VITON	RED
7	POTTING MATERIAL	EPOXY	NONE



POL	MATERIAL NO.	ENGINEERING NO.	FINISHED LENGTH
05	1200845113	WR5U20E03C3003	300 ± 10

Contact configuration	wire colour	wire mm ²	Port
	brown	0.34	1
	white	0.34	2
	blue	0.34	3
	black	0.34	4
	green/yellow	0.5	5

VOLTAGE RATING	250V
AMPERAGE RATING	4A
PROTECTION CLASS	IP 67/68/69K
OPERATING TEMPERATURE	-25°C / +90 °C
UL CERTIFICATION	FILE NO. E152210
CAS CERTIFICATION	FILE NO. LR6837

ENTER DESCRIPTION EC NO: WEU2011-0036 DRAWN BY: DRWINRILLER 2010/07/21 CHECKED BY: CHYD:CFORERER 2010/07/22 APPR: APOHL 2010/07/22	QUALITY SYMBOLS ▽=0 ◻=0	GENERAL TOLERANCES (UNLESS SPECIFIED)		DIMENSION STYLE MM ONLY		SCALE 4:1	DESIGN UNITS METRIC	THIRD ANGLE PROJECTION	
		mm	INCH	DRAWN BY APOHL_WEU	DATE 2010/01/27	TITLE RECEPTACLE FEMALE M12-5P ULTRA LOCK, FRONT, M16			
2	DESCRIPTION	4 PLACES	± ---	± ---	CHECKED BY NSTAUDIGEL	DATE 2010/01/29	MOLEX INCORPORATED DOCUMENT NO. SD-120084-010 SHEET NO. 1 OF 1		
		3 PLACES	± ---	± ---	APPROVED BY FPACHER	DATE 2010/02/01			
		2 PLACES	± 0.05	± ---	MATERIAL NO. 1200845113				
		1 PLACE	± 0.1	± ---	SIZE A3				
DRAFT WHERE APPLICABLE MUST REMAIN WITHIN DIMENSIONS		THIS DRAWING CONTAINS INFORMATION THAT IS PROPRIETARY TO MOLEX INCORPORATED AND SHOULD NOT BE USED WITHOUT WRITTEN PERMISSION							