

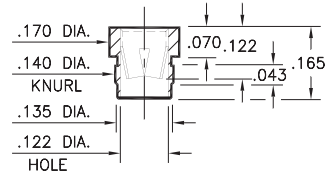
PIN RECEPTACLES

FOR .084" - .102" DIAMETER PINS

0388

0388-0-15-XX-08-XX-10-0

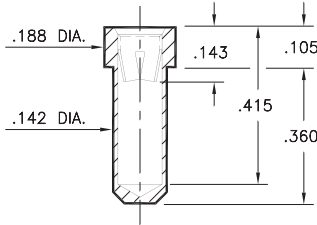
Press-fit in .138 mounting hole



0390

0390-0-15-XX-08-XX-10-0

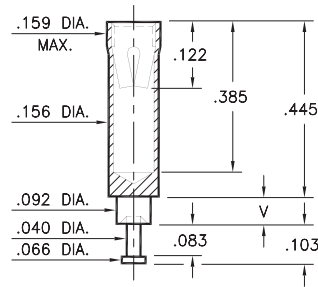
Solder mount in .144 min. mounting hole



0389

0389-X-15-XX-08-XX-10-0

Swage mount in .094 hole

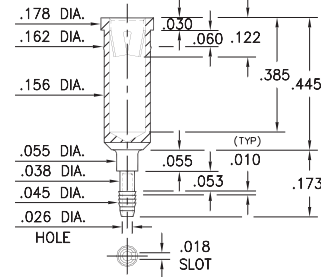


Basic Part Number	Board Thickness	Length V
0389-2	.062	.094
0389-3	.094	.125
0389-4	.125	.156

8963

8963-0-31-XX-08-XX-04-0

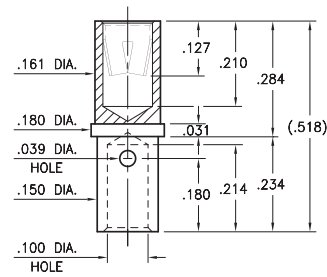
Compliant press-fit in .040 ± .003 plated hole. For .060" → .100" thick board



0712

0712-0-33-XX-08-XX-10-0

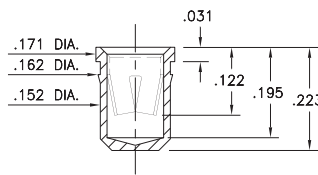
Wire crimp termination. Accepts wire sizes 12 AWG Max. / 14 AWG Min.



5493

5493-0-15-XX-08-XX-10-0

Press-fit in .158 mounting hole



SPECIFICATIONS:

Shell Material: Brass Alloy 360, 1/2 Hard

Contact Material: Beryllium Copper Alloy 172, HT

Dimensions: Inches

Tolerances On: Lengths: ± .005

Diameters: ± .002

Angles: ± 2°



ORDER CODE: XXXX - X - XX - XX - 08 - XX - XX - 0

BASIC PART #

SPECIFY SHELL FINISH:

- 01 200 μ" TIN/LEAD OVER NICKEL
- ◆ 80 200 μ" TIN OVER NICKEL (RoHS)
- ◆ 15 10 μ" GOLD OVER NICKEL (RoHS)

SPECIFY CONTACT FINISH:

- 01 200 μ" TIN/LEAD OVER NICKEL
- ◆ 80 200 μ" TIN OVER NICKEL (RoHS)
- ◆ 27 30 μ" GOLD OVER NICKEL (RoHS)

SELECT CONTACT:

#08 CONTACT (DATA ON PAGE 262)



Mouser Electronics

Authorized Distributor

Click to View Pricing, Inventory, Delivery & Lifecycle Information:

[Mill-Max:](#)

[8963-0-31-01-08-01-04-0](#) [0389-2-15-80-08-80-10-0](#) [8963-0-31-80-08-80-04-0](#) [8963-0-31-80-08-27-04-0](#) [8963-0-31-15-08-27-04-0](#) [0712-0-33-15-08-27-10-0](#) [5493-0-15-15-08-27-10-0](#)