

## Rainbowduino

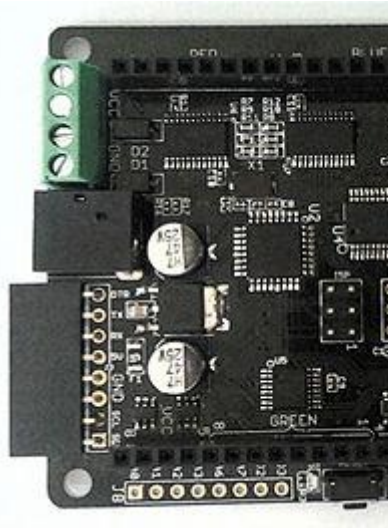
The Rainbowduino series is an Arduino compatible controller board with professional multiplexed LED driver. It can drive a 8x8 RGB Led Matrix or a 4x4x4 RGB LED Cube in common Anode mode. The Rainbowduino family is as follows,

- [Rainbowduino LED driver platform - Atmega 168](#): Not available now.
- [Rainbowduino LED driver platform - Atmega 328](#): The Rainbowduino board is an Arduino compatible controller board with professional LED driving capacity. It will drive an 8x8 RGB Led Matrix (Common Anode). It has revised to [Rainbowduino v3.0](#).
- [Rainbowduino v3.0](#): Rainbowduino v3.0 is flashed with Arduino boot-loader and this makes it easy to program sketches using Arduino IDE. Unlike other LED drivers, this comes with a USB to UART (FT232RL) inbuilt for programming the sketches. At the Sales now.
- [Rainbow Cube kit - RGB 4\\*4\\*4 \(Rainbowduino Compatible\)](#): **Rainbow Cube Kit** is a **3D RGB** LED Cube useful for creating colorful design. The 3D Cube is artistically crafted with sixty-four 8mm **RGB** LEDs arranged in a 4 x 4 x 4 manner. **Rainbow Cube Kit** can be used to create many beautiful visual effects with A **Rainbowduino**. The **Rainbow Cube Kit** comes with an inbuilt 3.3V / 1 Amp LDO useful for powering the kit independently. A XBee compatible socket is provided as well, this can be used to connect Rainbowduino with a PC or an Arduino wirelessly.
- [Rainbowduino Extension Board v0.9b](#): Rainbowduino Extension Shield is a breakout board of Rainbowduino's 192 separate LED driving channels. The channels are divided into three 8\*8 arrays: red, green and blue for easier controlling, it is designed to ease customized LED projects based on Rainbowduino.
- [Rainbow Cube](#) : The "Rainbow Cube – Ready to Shine" requires no soldering and comes pre-assembled with a Rainbowduino (Arduino-compatible) LED driver controller. Just plug it in to your PC or Mac, grab a copy of the free design software, and you'll discover just how easy it is to program this spectacular device and see the results in real time.
- [Rainbow Cube Kit Acrylic Harness](#): An exquisite, Transparent and easy-to-assembled acrylic case which custom made for Rainbow Cube Kit, it is designed by Riley Porter @Synthetos. This Harness is made of six piece of acrylic board, two bags of keys, four 16mm high plastic column and several screw nuts.

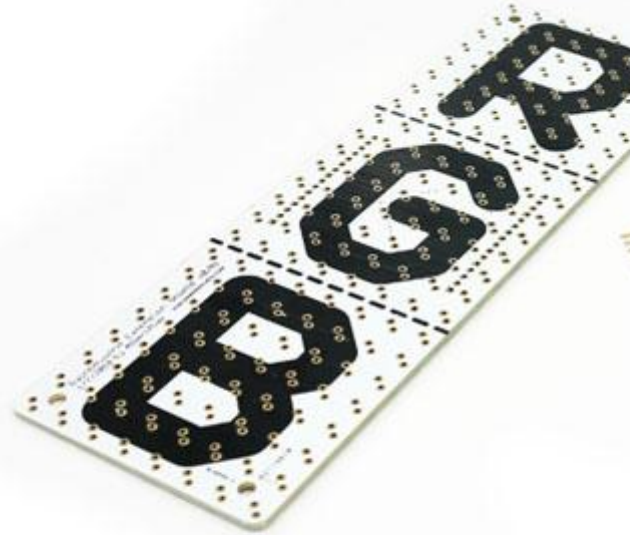
## Rainbowduino platform



[Rainbowduino LED driver platform - Atmega 328](#)  
Not available now

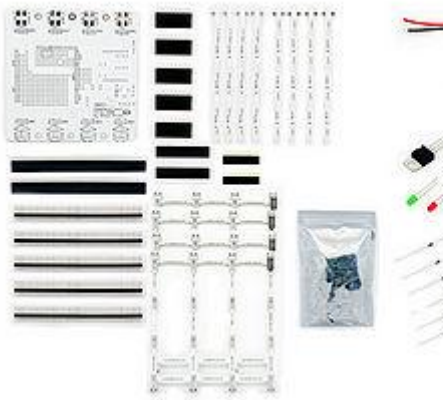


[Rainbowduino v3.0](#)



[Rainbowduino Extension Board v0.9b](#)

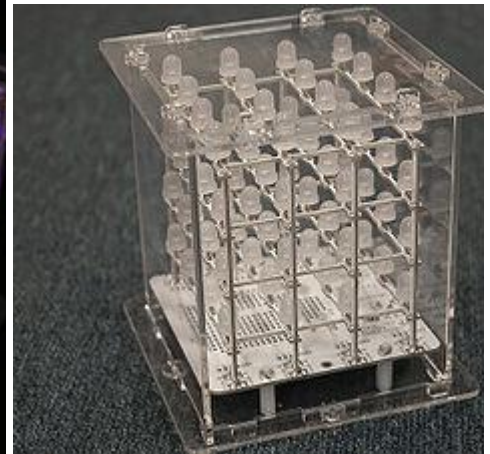
## Rainbow Cube



[Rainbow Cube kit - RGB 4\\*4\\*4 \(Rainbowduino Compatible\)](#)



[Rainbow Cube](#)



[Rainbow Cube Kit Acrylic Harness](#)

## Seed depot sales

- [Rainbowduino V3.0](#)
- [Rainbow Cube kit - RGB 4\\*4\\*4 \(Rainbowduino Compatible\)](#)
- [Rainbowduino Extension Board v0.9b](#)
- [Rainbow Cube](#)
- [Rainbow Cube Kit Acrylic Harness](#)