

used for:

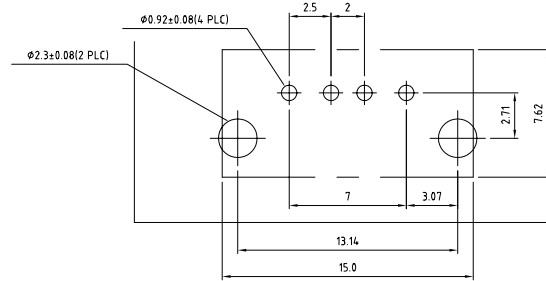
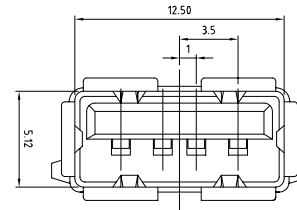
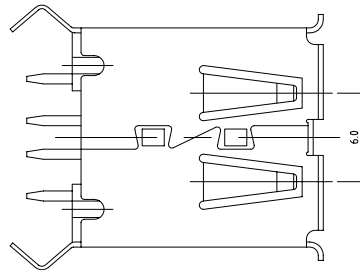
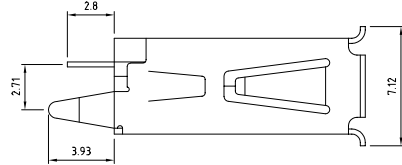
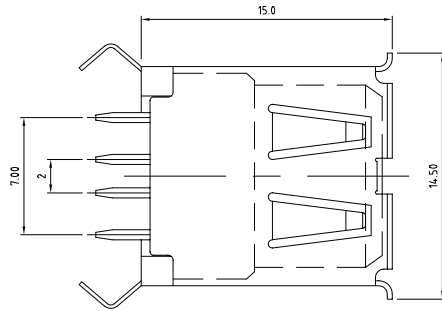
SPECIFICATIONS

Materials

Insulator: Thermoplastic, Glass Filled, UL94V-0 Rated
 Contact: Copper Alloy, 30u" Gold Plated
 Shell: Copper Alloy, Nickel Plated

Electrical

Insulation Resistance: 1000 Megohms Minimum
 Contact Resistance: 30 Milliohms Maximum Initial
 Dielectric Withstanding Voltage: 500V AC for one minute
 Current: 1.0 Ampere Maximum Per Contact At 30°C T-Rise
 Voltage: 30V AC (rms)
 Temperature: -55°C ~ 85°C



Directive 2002/95/EC
 „RoHS“
 Compliant

THIS DRAWING MAY NOT BE COPIED OR REPRODUCED IN ANY WAY, AND MAY NOT BE PASSED ON TO A THIRD PARTY WITHOUT WRITTEN PERMISSION. OWNERSHIP AND COPYRIGHT OF CONEC CORPORATION DO NOT ALTER CAD DRAWING BY HAND	tolerance		finish		Dim. in mm	scale:		
	unless otherwise specified tolerance shall be as follows Decimal: .xx .xxx Angles:					SEE SPECIFICATIONS		
			2006	date	name	title: USB 2.0 connector A type PCB Thru-Hole 4pin female RoHS compliant		DIN A3 sheet 1/1
			draw.	April 17	Vincent Ke			
			appd.	April 17	Kathy Skelhorn			
			norm					
			d-old			drawing no.:		AutoCAD 2005
						39K1A238		
						part no.:		33UBAD-04SW12R



Mouser Electronics

Authorized Distributor

Click to View Pricing, Inventory, Delivery & Lifecycle Information:

[CONEC:](#)

[33UBAD-04SW12R](#)