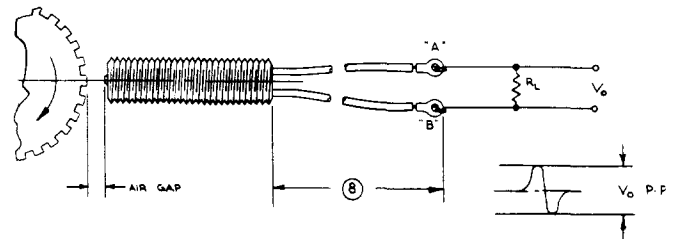
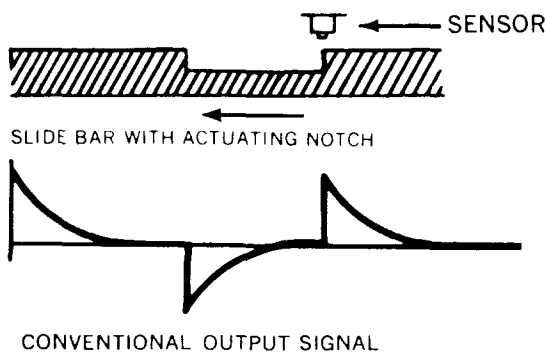
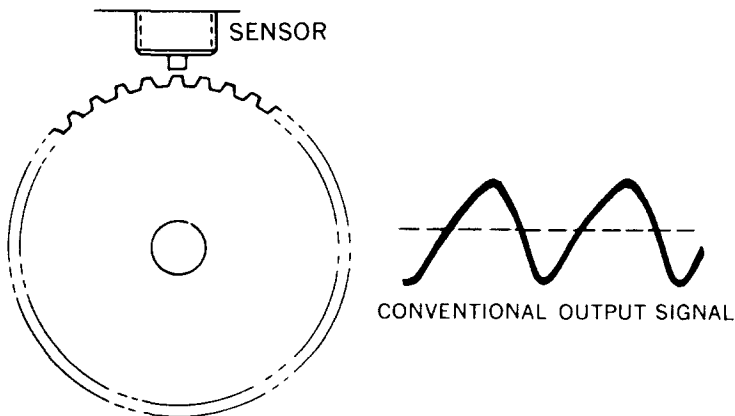


The various models of magnetic pickups produced by TSI have been listed on the reverse side of this sheet along with their performance characteristics. We strive to produce "standard" units for our many customers so as to keep costs down. We recognize, however, that for various reasons, standard units are not always the optimum solution, so custom shaped cases and pole pieces are available as well as custom lead or terminal configurations. Metal or plastic cases are available. Threads, if required, must be specified. Testing details must also be provided by customer for inspection and testing correlation. Applications are varied. Application form should be completed and returned to TSI so we can assist you with your application most efficiently and economically. Applications include speed and over-speed sensing, crank and throttle angle sensing, ignition timing, anti-skid systems, throttle control, fuel control and a variety of diagnostic, industrial and computer peripheral applications. Computer peripheral applications include disc drives, line printers, card punches and readers, printer terminals plus many other specials.



| Item No.  | Model No.         | Case size (inches)<br>See note 1 | Case threads  | Case Mat'l | Pole tip (inches)<br>See note 2 | Terminal Configuration                                     | Normal Output @ STC<br>See note 3 | Polarity<br>See note 4                | Resistance (ohms)<br>± 10% | Inductance (mH) ± 10% | TSI Identification | REMARKS  |
|---|-------------------|----------------------------------|---------------|------------|---------------------------------|--|-----------------------------------|---------------------------------------|----------------------------|-----------------------|--------------------|--|
| 1   | VR187-500SP-HXB   | .87 OD x .500L                   | NONE          | Steel      | .060S                           | 28 AWG leads twisted pair PVC                              | 10Vpp                             | A - Red<br>B - Black                  | 150                        | 12                    | 101-01050          | Leads exit radially.   |
| 2   | VR187-500SP-HXC   | .87 OD x .50L                    | NONE          | Steel      | .060 OD x .020 C                | 28 AWG leads twisted pair PVC                              | 10Vpp                             | A - Red<br>B - Black                  | 150                        | 12                    | 101-40018          |  |
| 3   | VR187-500ST       | .87 OD x .50L (1)                | 10-32 UNF-2A  | Steel      | .050S                           | 28 AWG leads twisted pair PVC                              | 10Vpp                             | A - Red<br>B - Black                  | 150                        | 12                    | 101-01007          | (1) Case threaded full length.   |
| 4   | VR187-875SP-XRE   | .87 OD x .875L                   | NONE          | Steel      | .015C                           | 26 AWG PVC   | 8Vpp                              | None (see remarks)                    | 150                        | 12                    | 101-01064          | Both leads are white   |
| 5   | VR187-875SP       | .87 OD x .875L                   | NONE          | Steel      | .060S                           | 28 AWG twisted pair  | 10Vpp                             | A - Red<br>B - Black                  | 150                        | 12                    | 101-01021          | Another version available with black and white leads Black pos. with respect to white  |
| 6   | VR187-1000SP      | .87 OD x 1.0L                    | NONE          | Steel      | .060S                           | 28 AWG twisted pair  | 10Vpp                             | A - Red<br>B - Black                  | 150                        | 12                    | 101-01001-01       |  |
| 7   | VR250-600PP       | 250 OD x .600L                   | NONE          | Plastic    | .040C                           | 28 AWG twisted pair PVC                                    | 12Vpp                             | A - White<br>B - Black                | 130                        | 7                     | 101-40020          |  |
| 8   | VR250-620PP       | 250 OD x .620L                   | NONE          | Plastic    | .0600D x .020C                  | 28 AWG leads twisted pair PVC                              | 250 mV pp (3)                     | A - White<br>B - Black                | 130                        | 12                    | 101-01011          | (3) Measured sensing a slot .020" wide, 2" long 1" deep moving at 450 IPS at .015" air gap   |
| 9   | VR250-620SP-XEMM  | 250 OD x .620L                   | NONE          | Steel      | .015C                           | 30 AWG 2C shielded cable PVC                               | see Remarks                       | A - White<br>B - Black                | 330                        | 35                    | EX 1741            | 150 mV output P-P at the following conditions: detect slot in alum. wheel Slot width .020", surface speed 550 IPS, air gap .012", load none. Shield is common to the case  |
| 10  | VR250-800PP       | 250 OD x .800L                   | NONE          | Plastic    | .060 OD x .020C                 | 24 AWG leads PVC   | 10V                               | A - Red<br>B - Black                  | 130                        | 12                    | 101-01038          |  |
| 11  | VR250-850PT-1     | 250 OD x .850L                   | 1/4-28 UNF-2A | Plastic    | .015C                           | 28 AWG PVC twisted pair                                    | 10Vpp                             | A - Red<br>B - Black                  | 130                        | 14                    | 101-01062          | Full thread .620 long, remainder is knurled.   |
| 12  | VR250-850PT-2     | 250 OD x .850L                   | 1/4-28 UNF-2A | Plastic    | .060 OD x .020C                 | Pins .040" dia .25" long, .16" separation center to center | 10V                               | A - not marked<br>B - blue dot mark   | 130                        | 12                    | 101-01091          |  |
| 13  | VR250-850PT-XC    | 250 OD x .850L                   | 1/4-28 UNF-2A | Plastic    | .060 OD x .020C                 | 24 AWG 2C shielded cable                                   | 12Vpp                             | A - Red<br>B - Black                  | 130                        | 12                    | EX 1561            | Conductors and drain wire are exposed at the case exit for a length of .75". Shield not common to the case. Thread length is .62".   |
| VR 250 .850 ST.XRS (RS COMPONENTS) STEEL CASE, THREADED (STOCK NO. 304.166) |                   |                                  |               |            |                                 |  |                                   |                                       |                            |                       |                    |  |
| 14  | VR250-850ST-XX    | 250 OD x .850L                   | 1/4-28 UNF-2A | Steel      | .060 OD x .020C                 | 28 AWG leads with connector Eldema #Q-083-5K               | 10V                               | A - White/Red<br>B - White/Black      | 130                        | 12                    | 101-01056          | Leads terminated with pins AMP#88048-4.  |
| 15  | VR250-850ST-XD    | 250 OD x .850L                   | 1/4-28 UNF-2A | Steel      | .060 OD x .020C                 | 28 AWG leads with connector Eldema #Q-083-5K               | 10V                               | A - Red<br>B - Black                  | 130                        | 12                    | 101-01061          | An option is available for plastic case.   |
| 16  | VR250-850ST-XW    | 250 OD x .850L                   | 1/4-28 UNF-2A | Plastic    | .015C                           | 28 AWG PVC twisted pair                                    | 10Vpp                             | A - Red<br>B - Black                  | 130                        | 14                    | 101-10163          | Full thread .620 long, remainder is knurled.   |
| 17  | VR250-850ST-XU    | (1) 250 OD x .850L               | 1/4-28 UNF-2A | Steel      | .060 OD x .020C                 | 28 AWG leads with connector Eldema #Q-083-5K               | 10V                               | A - Red<br>B - Black                  | 130                        | 12                    | 101-01026          | (1) Thread length is .62", rest is knurled. Case dia. at sensing end is .195" for a length of .03". Two other versions of this unit are available as follows: no connector 101-01027, with pins (Amp 41663) as 101-01033 |
| 18  | VR250-850ST-XDP   | 250 OD x .850L                   | 1/4-28 UNF-2A | Steel      | .060 OD x .020C                 | 28 AWG leads with connector Eldema #Q-083-5K               | 10V                               | A - White<br>B - Orange               | 130                        | 12                    | 101-01012          | Several lead length options are available  |
| 19  | VR250-875SP       | 250 OD x .875L                   | NONE          | Steel      | .060S                           | 26 AWG 2 leads PVC   | 10Vpp                             | A - Black<br>B - Red                  | 130                        | 12                    | 101-01016          |  |
| 20  | VR250-875SP-XTC   | 250 OD x .875L                   | NONE          | Steel      | .060S                           | 26 AWG PVC 2 leads   | 10Vpp                             | A - Red<br>B - Black                  | 130                        | 12                    | 101-01067          |  |
| 21  | VR250-937ST       | 250 OD x .937L                   | 1/8-28 UNF-2A | Steel      | .060 OD x .020C                 | 28 AWG 2 leads PVC twisted pair                            | 10Vpp                             | A - Black<br>B - Red                  | 130                        | 12                    | 101-01087          |  |
| 22  | VR250-1000PP-1    | 250 OD x 1.0L                    | NONE          | Plastic    | .062 OD x .015 C                | 26 AWG PVC twisted pair                                    | see Remarks                       | A - White<br>B - Black                | 145                        | 18                    | 101-40023          | 100 mV P-P minimum output detecting slots .016" wide, 100 long in a disc .010" thick, 400ss, at 140 IPS 10K OHMS load  |
| 23  | VR250-1000PP-2    | 250 OD x 1.0L                    | NONE          | Plastic    | .060 OD x .020C                 | 24 AWG 2 leads PVC twisted pair                            | 12Vpp                             | A - White<br>B - Black                | 130                        | 12                    | 101-01001-01       | An identical version is also available in steel case as 101-01001-02 (VR250-1000SP)  |
| 24  | VR250-1000PP-XTI  | 250 OD x 1.0L                    | NONE          | Plastic    | .015C                           | 26 AWG PVC twisted pair                                    | see Remarks                       | A - White<br>B - Black                | 130                        | 9                     | EX 1689            | Output 20mV PP using gear 1 0" dia .96 pitch, 96 teeth, 4166s mat'l. at 7 IPS  |
| 25  | VR250-1000PP-XATP | 250 OD x 1.0L                    | NONE          | Plastic    | .060S                           | 26 AWG leads PVC twisted pair                              | 10Vpp                             | A - White<br>B - Black                | 130                        | 18                    | 101-01022-02       |  |
| 26  | VR250-1000PP-3    | 250 OD x 1.0L                    | NONE          | Plastic    | .060 OD x .020C                 | 28 AWG leads PVC twisted pair                              | 12Vpp                             | A - White<br>B - Black                | 130                        | 12                    | 101-01086          |  |
| 27  | VR250-1000PP-XEMM | 250 OD x 1.0L                    | NONE          | Plastic    | .060 OD x .015C                 | 26 AWG PVC leads twisted pair                              | 12Vpp                             | A - White<br>B - Black                | 130                        | 10                    | AEX 1690           |  |
| 28  | VR250-1000PT-1    | (1) 250 OD x 1.0L                | 1/4-28 UNF-2A | Plastic    | .060 OD x .020C                 | Pins .040" dia .25" long .16" separation center to center  | 10V                               | A - not marked<br>B - marked terminal | 130                        | 12                    | 101-01009          | (1) Thread length .62", rest is knurled  |
| 29  | VR250-1000PT-2    | (1) 250 OD x 1.0L                | 1/4-28 UNF-2A | Plastic    | .060 OD x .020 C                | 28 AWG 2 leads PVC twisted pair                            | 600 mVpp (3)                      | A - Red<br>B - Black                  | 130                        | 12                    | 101-01010-01       | (1) Thread length is .62", rest is knurled. (3) Measured sensing a bar .020" wide at .005" air gap at 198 IPS with 10K OHMS load. Identical unit also available in steel case as VR250-1000ST (101-01010-02)             |
| 30  | VR250-1000SP-1    | 250 OD x 1.0L                    | NONE          | Steel      | .062 S                          | 22 AWG PVC shielded cable                                  | 10Vpp                             | A - Red<br>B - Black                  | 130                        | 18                    | 101-01052          | Unit also available in a plastic holder as 101-01006   |
| 31  | VR250-1000SP-2    | 250 OD x 1.0L                    | NONE          | Steel      | .060 OD x .040 C                | 26 AWG 2C PVC shielded cable                               | 5Vpp                              | A - Red<br>B - Black                  | 100                        | 8                     | 101-01035          | (1) Shield is not common to the case   |
| 32  | VR250-1000ST-1    | (1) 250 OD x 1.0L                | 1/4-28 UNF-2A | Steel      | .060 S                          | 26 AWG 2 leads PVC   | 600 mVpp (3)                      | A - Red<br>B - Black                  | 130                        | 12                    | 101-01008          | (1) Thread length is .62", rest is knurled. (3) Measured sensing a bar .020" wide at .005" air gap at 198 IPS with 10K OHMS load.  |
| 33  | VR250-1000ST-2    | (1) 250 OD x 1.0L                | 1/4-28 UNF-2A | Steel      | .060 OD x .020 C                | 28 AWG 2 leads PVC twisted pair                            | 10Vpp                             | A - White<br>B - Black                | 130                        | 12                    | 101-01017          | (1) Thread length is .62" - rest is knurled  |
| 34  | VR250-1000ST-3    | (1) 250 OD x 1.0L                | 1/4-28 UNF-2A | Steel      | .060 OD x .020 C                | 28 AWG 2 leads PVC twisted pair                            | 10Vpp                             | A - Red<br>B - Black                  | 130                        | 12                    | 101-01034          | (1) Thread length is .62" - rest is knurled  |

| Item No. | Model No.          | Case size (inches) see note 1                           | Case threads  | Case Mat'l | Pole tip (inches) see note 2 | Terminal Configuration                                      | Normal Output @ STC see note 3 | Polarity see note 4                        | Resistance (ohms) = 10 <sup>1/2</sup> | Inductance (mH) = 10% | TSI Identification | REMARKS  |
|----------|--------------------|---|---------------|------------|------------------------------|---|--------------------------------|--|---------------------------------------|-----------------------|--------------------|--|
| 35       | VR250-1000ST-4     | (1) 250 OD x 1 0 L                                      | 1 4-40 NS-2A  | Steel      | .060 OD x .020 C             | 28 AWG leads PVC twisted pair                               | 10Vpp                          | A - Red<br>B - Black                       | 130                                   | 12                    | 101-01051          | (1) Thread length is .62" - rest is knurled. Unit supplied with a hex nut.   |
| 36       | VR250-1000ST-5     | (1) 250 OD x 1 0 L                                      | 1 4-28 UNF-2A | Steel      | .060 OD x .020 C             | 28 AWG PVC leads twisted pair                               | 10Vpp                          | A - Red<br>B - Black                       | 130                                   | 12                    | 101-01085          | (1) Thread length is .62" - rest is knurled.   |
| 37       | VR250-1000ST-6     | (1) 250 OD x 1 0 L                                      | 1 4-28 UNF-2A | Steel      | .060 OD x .020 C             | Pins .040" dia 25" long. 160" separation                    | 10Vpp                          | A - Unmarked pin<br>B - pin near blue mark | 130                                   | 12                    | 101-01088          | (1) Thread length is .62" - rest is knurled.   |
| 38       | VR250-1020XP       | (1) 250 OD x 1 02 L                                     | NONE          | Plastic    | .060 OD x .020 C             | 24 AWG PVC leads twisted pair                               | 2Vpp (3)                       | A - Black<br>B - White                     | 130                                   | 12                    | 101-01015          | (1) Housing has mounting flanges .6" long, 1.12" wide tip to tip. Flanges have slotted holes for mounting. (3) Measured sensing a slot .060" x .060" at 015" air gap at 900 IPS.   |
| 39       | VR250-1170ST-XBT-2 | (1) 250 OD x 1 17 L                                     | 1 4-40 UNS-2A | Steel      | .060 OD x .025 C             | 24 AWG PVC leads  | 7Vpp                           | A - Red<br>B - Black                       | 130                                   | 12                    | BEX 1805           | (1) Thread length is .75". Knurled at rear of case. 2" long. .312" dia. The sensing end is provided with a magnetic shield.  |
| 40       | VR250-4500SP-XC    | 250 OD x 4 5 L  | NONE          | Steel      | .093 S                       | 22 AWG 2C shielded cable PVC                                | See Remarks                    | A - Red<br>B - Black                       | 260                                   | 32                    | EX 1693            | Output voltage 450 mVpp sensing 5 16" dia. hole in a gear face moving at 122 IPS (no load). Shield not common to case. Air gap .062".  |
| 41       | VR300-1750SP-XC    | 300 OD x 1 75 L   | NONE          | Steel      | .060 S Tip recessed .005"    | 22 AWG 2C Shielded cable                                    | 5Vpp (3)                       | A - Red<br>B - Black                       | 130                                   | 11                    | EX 1666            | Cable protected with flexible armor cable 13" long upon exit from case. Shield is common to the case. (3) Output can be doubled if pole tip is not recessed but rather flush with the case.  |
| 42       | VR305-2312SP-XKE   | 305 OD x 2 31 L   | NONE          | Steel      | .060 S Flush with case       | 22 AWG 2 C Shielded Cable                                   | See Remarks                    | A - Red<br>B - Black                       | 130                                   | 14                    | 101-01071          | Output voltage 500mVpp sensing a notch .040" dp x .060" wd moving at 212 IPS at .020" air gap with 10K OHMS load. Cable protected with flex armor cable 15" long. Case length includes a shoulder .375" long and .375" dia.  |
| 43       | VR309-2437SP-XKE   | 309 OD x 2 437 L  | NONE          | Steel      | .060 S Flush with case       | 22 AWG 2 C Shielded Cable                                   | See Remarks                    | A - Red<br>B - Black                       | 130                                   | 14                    | EX 1824            | Specification identical to Item #15. Case fits inside an adapter bushing 2.0" long with a shoulder .375" long and .500" OD. Construction identical to Item #15 except for cable length.  |
| 44       | VR3095-4000SP-XCT  | 3095 OD x 4 00 L (3095 OD x 1 5 L and remainder 250 OD) | NONE          | Steel      | .125 S                       | 26 AWG 2 C  | See Remarks                    | A - Red<br>B - Black                       | 170                                   | 55                    | EX 1934            | Output voltage 130mVpp sensing a notch .25" wide x .28" deep moving at 22 IPS with .060" air gap with 10K OHMS load.   |
| 45       | VR3100-4000SP-XCT  | 309 OD x 4 00 L   | NONE          | Steel      | .094 S                       | 22 AWG 2 C Teflon   | See Remarks                    | A - Red<br>B - Black                       | 200                                   | 35                    | EX 1603            | Output voltage 150mVpp sensing a notch .25" wd x .28" dp moving at 22 IPS. Case is .309" OD for a length of 1.31" and the remainder is .248".  |
| 46       | VR312-1750SP-XKM   | 312 OD x 1 75 L   | NONE          | Steel      | .060 S                       | 22 AWG 2 C Shielded Cable                                   | 10Vpp                          | A - Red<br>B - Black                       | 60                                    | 8                     | 101-01055          | Cable protected with flexible armor cable for 18" upon exit from the case. Case has a groove .205" dia. .53" long located .25" from sensing end.   |
| 47       | VR312-1750SP-XHT   | 312 OD x 1 75 L   | NONE          | Steel      | .060 S recessed .015"        | 22 AWG 2 C Shielded cable                                   | See Remarks                    | A - Pin C<br>B - Pin B                     | 60                                    | 8                     | 101-01059          | Output voltage 100mVpp min. sensing a notch .060" dp x .060" wd at zero air gap and 30 IPS with 20K OHMS load. Case has a groove .250" dia. .045" long located .37" from sensing end.  |
| 48       | VR3100-4500SP-XCT  | 3100 DC x 4 5 L   | NONE          | Steel      | .150 S                       | 22 AWG leads Teflon twisted pair                            | 250 mVpp (3)                   | A - Red<br>B - Black                       | 190                                   | 42                    | EX 1936            | (3) Measured sensing a hole 5 16" dia at 120 IPS with .060" air gap with 10K OHMS load.  |
| 49       | VR319-1220PP       | (1) 319 OD x 1 22 L                                     | NONE          | Plastic    | See (2) Remarks 107X         | 22 AWG 2 leads PVC  | See Remarks (3)                | A - White<br>B - Black                     | 330                                   | 100                   | 101-01053          | (1) Case has orientation tab in the rear. .056" high x .190" long. (2) Pole tip extends .10" beyond the case. It is .072" wide and has a notched step .054" x .050". (3) Output voltage 13Vpp sensing a notch .086" x .180" at 516 IPS with 400K OHMS load. A unit without a notch in the tip. 16Vpp. EX 1633 available. |
| 50       | VR375-760PP-XDP    | (1) .375 OD x .760 L                                    | NONE          | Plastic    | .093 OD x .033 C             | Pins exiting radially from rear of unit located 180" a part | 24Vpp (3)                      | A - Marked pin<br>B - pin not marked       | 400                                   | 61                    | BEX 1465           | (1) Pins length is .25"; they are located .05" from rear of the unit. (3) Measure at .010" air gap.  |
| 51       | VR375-805PP-XDP    | (1) .375 OD x .805 L                                    | NONE          | Plastic    | .093 OD x .033 C             | Pins exiting radially from rear of unit located 180" apart  | 10Vpp (3)                      | A - Marked pin<br>B - pin not marked       | 75                                    | 9                     | BEX 1311           | (1) Two flanges extend at the sensing end to aid in installing the unit. Pins length is .25". (3) Measured at .010" air gap.   |
| 52       | VR375-1250PT-XBT   | .375 OD x 1 25 L  | 3/8-24 UNF-2A | Plastic    | .093 S                       | 24 AWG PVC leads  | 17-34 Vpp                      | A - Red<br>B - Black                       | 100                                   | 16                    | 101-01003-01       | Case threaded full length. Unit supplied with a hex nut.   |
| 53       | VR375-1250SP-XAC   | .375 OD x 1 25 L  | NONE          | Steel      | .093 S                       | 22 AWG Teflon leads   | 70 Vpp                         | A - White<br>B - Black                     | 650                                   | 130                   | 101-01066          |  |
| 54       | VR375-1250ST-XDS-1 | (1) .375 OD x 1 25 L                                    | 3/8-24 UNF-2A | Steel      | .093 S                       | Molex connector #1625-3                                     | 17-34 Vpp                      | A - Pin 2<br>B - Pin 1                     | 100                                   | 10                    | 101-01069          | (1) Thread length is .812", remainder is .437" dia knurled. Leads are covered with shrink tubing between knurl and connector. Unit supplied with 2 hex nuts, 2 shoulder fiber washers and one lock washer.   |
| 55       | VR375-1250ST-XDS-2 | .375 OD x 1 25 L  | 3/8-24 UNF-2A | Steel      | .093 S                       | 24 AWG PVC leads  | 17-34 Vpp                      | A - White<br>B - Black                     | 100                                   | 16                    | 101-01003-03       | Case threaded full length. Unit supplied with a hex nut.   |
| 56       | VR375-1250ST-XBT   | .375 OD x 1 25 L  | 3/8-24 UNF-2A | Steel      | .093 S                       | 24 AWG PVC leads  | 17-34 Vpp                      | A - Red<br>B - Black                       | 100                                   | 16                    | 101-01003-02       | Same as above.   |
| 57       | VR375-1250ST-XP    | .375 OD x 1 25 L  | 3/8-24 UNF-2A | Steel      | .093 OD x .015 CH            | 26 AWG PVC twisted pair                                     | 80 Vpp                         | A - White<br>B - Black                     | 650                                   | 130                   | EX 1308            | Case threaded full length.   |
| 58       | VR375-1250ST-XDP-2 | (1) .375 OD x 1 25 L                                    | 3/8-24 UNF-2A | Steel      | .093 S                       | 22 AWG 2 C Shielded cable                                   | 17-34 Vpp                      | A - White<br>B - Black                     | 100                                   | 16                    | 101-01044-1        | (1) Thread length .965", remainder is .44" OD knurled.   |
| 59       | VR375-1250ST-XDP-3 | (1) .375 OD x 1 25 L                                    | 3/8-24 UNF-2A | Steel      | .093 OD x .033 C             | 22 AWG 2C Shielded cable                                    | 7-22 Vpp                       | A - White<br>B - Black                     | 100                                   | 16                    | 101-01044-2        | (1) Same as above.   |

| Item No. | Model No.           | Case size (inches)<br>See note 1 | Case threads   | Case Mat'l | Pole tip (inches)<br>See note 2 | Terminal Configuration                                  | Normal Out-put @ STC<br>See note 3 | Polarity<br>See note 4  | Resistance (ohms) ± 10% | Inductance (mH) ± 10% | TSI Identification | REMARKS  |
|----------|---------------------|----------------------------------|----------------|------------|---------------------------------|---|------------------------------------|-------------------------|-------------------------|-----------------------|--------------------|--|
| 60       | VR375-1250ST -XDP-1 | (1) .375 OD x 1.25 L             | 3-8-24 UNF-2A  | Steel      | .093 OD x .010 C                | 22 AWG 2C Shielded cable PVC                            | See Remarks (3)                    | A - White<br>B - Black  | 100                     | 16                    | EX 1284            | (1) Thread length .965" remainder is .44" OD knurled. Sensing end of unit has a magnetic shield with a center hole for the pole piece (3) Output voltage 450mVpp sensing a bar .011" high .010" wide at .005" air gap moving at 160 IPS and 10K OHMS load Hex nut provided with unit   |
| 61       | VR375-1250ST -XBC   | (1) .375 OD x 1.25 L             | 3-8-24 UNF-2A  | Steel      | .093 S                          | 26 AWG 2 leads PVC                                      | 34 Vpp                             | A - White<br>B - Black  | 640                     | 207                   | 101-01058          | (1) Thread length is .812" remainder is .437 dia knurled. Unit supplied with one hex lock nut  |
| 62       | VR375-1250ST -XP-1  | (1) .375 OD x 1.25 L             | 3-8-24 UNF-2A  | Steel      | .093 OD x .040 C                | 26 AWG PVC twisted pair                                 | 11.3 Vpp (3)<br>See Remarks        | A - White<br>B - Black  | 670                     | 145                   | 101-01029          | (1) Case threaded full length (3) Output measured at .010" air gap   |
| 63       | VR375-1250ST -XX    | (1) .375 OD x 1.25 L             | 3-8-24 UNF-2A  | Steel      | .093 S                          | 26 AWG PVC leads with Molex connector                   | 34 Vpp                             | A - Pin 1<br>B - Pin 2  | 640                     | 207                   | 101-01036          | (1) Thread length is 1.00" unit supplied with a hex jam nut. Leads are encased in 5" PVC shrink tubing   |
| 64       | VR375-1250ST -XV    | (1) .375 OD x 1.25 L             | 3-8-24 UNF-2A  | Steel      | .093 OD x .032 C                | 24 AWG PVC leads  | 17-34 Vpp                          | A - Red<br>B - Black    | 100                     | 16                    | 101-01039          | (1) Thread length .812" remainder is .437 dia knurled.   |
| 65       | VR375-1250ST -XMP   | (1) .375 OD x 1.25 L             | 3-8-24 UNF-2A  | Steel      | .093 S                          | 24 AWG PVC leads  | 17-34 Vpp                          | A - Red<br>B - Black    | 100                     | 16                    | 101-01077          | (1) Case has 2 parallel flats notched into it. Flats are .312" apart. Notches are located .060" from sensing end. Unit is provided with a hex nut. Unit is threaded full length  |
| 66       | VR375-1250ST -XP-2  | .375 OD x 1.25 L                 | 3-8-24 UNF-2A  | Steel      | .093 OD x .015 Ch               | 26 AWG PVC twisted pair                                 | 80 Vpp                             | A - White<br>B - Black  | 650                     | 130                   | EX 1308            | Case threaded full length. There are 2 color dots on back of the unit to chisel orientation.   |
| 67       | VR375-1250ST        | (1) .375 OD x 1.25 L             | 3-8-24 UNF-2A  | Steel      | .093 OD x .031 C                | 2C Shielded cable terminated with size 6 lugs           | 7-22 Vpp                           | A - White<br>B - Black  | 100                     | 16                    | 101-01045          | (1) Thread length is .96" Rear of unit is knurled .44" dia. 2" long Unit supplied with hex jam nut.  |
| 68       | VR375-1355ST        | (1) .375 OD x 1.355 L            | 3-8-24 UNF-2A  | Steel      | .100 S                          | 26 AWG 2C Shielded cable termination Brundy connector   | 50 Vpp                             | A - Pin 1<br>B - Pin 2  | 360                     | 90                    | 101-01018          | (1) Thread length is 1-3-16" remainder .445" OD knurled. Unit provided with locknut.   |
| 69       | VR375-1370SP -XDP-1 | (1) .375 OD x 1.37 L             | NONE           | Steel      | .093 OD x .015 C (2)            | 22 AWG 2C Shielded cable - shield not common to case    | 1 Vpp (3)                          | A - White<br>B - Black  | 200                     | 64                    | 101-01057          | (1) Case has a magnetic shield at the sensing end. (2) Pole tip flush with sensing surface. (3) Measured with trigger bar .012" high, .012" wide moving at 160 IPS at .005" air gap and 2.2K OHMS load   |
| 70       | VR375-1450ST        | (1) .375 OD x 1.45 L             | 3-8-24 UNF-2A  | Steel      | .093 OD stepped to .032 OD      | 22 AWG 2C PVC shielded cable. Shield not common to case | 3 Vpp (3)                          | A - White<br>B - Black  | 100                     | 16                    | 101-01065          | (1) Thread length is .68" Sensing end of case provides a magnetic shield. Rear of case, .48" long, is hexagonal configuration 3-8" flat to flat. A braided shield covers the cable exit and it is secured to the case with conductive epoxy. Case is provided with a self-locking element. (3) Measured with trigger bars .026" high x .030" wide separated by .046" moving at 200 IPS at .002" air gap with 10K OHMS load |
| 71       | VR375-1531ST        | (1) .375 OD x 1.53 L             | 3-8-24 UNF-2A  | Steel      | .093 S                          | 24 AWG PVC leads  | 17-34 Vpp                          | A - Red<br>B - Black    | 100                     | 16                    | 101-01072          | (1) Case has 2 parallel flats .312" apart at leads end. Flats are .25" long. Unit supplied with a hex nut  |
| 72       | VR375-2000PT        | (1) .375 OD x 2.0 L              | 3-8-24 UNF-2A  | Plastic    | .093 S                          | 24 AWG PVC leads  | 17-34 Vpp                          | A - Red<br>B - Black    | 100                     | 16                    | 101-01037          | (1) Unit threaded full length. Unit supplied with a hex nut.   |
| 73       | VR375-2000ST        | .375 OD x 1.99 L                 | 3-8-24 UNF-2A  | Steel      | .093 S                          | 24 AWG PVC leads  | 17-34 Vpp                          | A - Red<br>B - Black    | 100                     | 16                    | 101-01048          | (1) Case is threaded in the rear of the unit. Thread length is .625"   |
| 74       | VR375-2000ST -XOC   | .375 OD x 2.00 L                 | 3-8-24 UNF-2A  | Steel      | .093 S                          | 24 AWG PVC leads with spade lugs                        | 17-34 Vpp                          | A - White<br>B - Black  | 100                     | 16                    | 101-01079          | Case threaded full length. Unit is provided with a HEX locknut.  |
| 75       | VR375-2345SP -XTIC  | (1) .375 OD x 2.345 L            | NONE           | Steel      | .093 OD x .060 C                | 22 AWG 2C Shielded cable                                | 600 mVpp (3)                       | A - Black<br>B - White  | 1.4K OHMS               | 500                   | CEx 1802           | (1) Case has harden tool steel tip .030" thick. Case also has 2 "O" ring grooves. Back of the case is 1.2" OD for a length of 5.8". Cable is protected with flexible armor cable secured to the case. (3) Measured sensing a notch .060" wide x .060" deep at 150IPS and .015" air gap (or 10K OHMS load)  |
| 76       | VR375-2500SP        | .375 OD x 2.5 L                  | NONE           | Steel      | .093 S                          | 18 AWG 2C Neoprene jacket cable with #6 spade lug       | 60 Vpp                             | A - White<br>B - Black  | 280                     | 50                    | 101-01054-01       | Same unit also available in a 4.5" long case as VR375-4500SP (Ref. 101-01054-02)   |
| 77       | VR395S-1281PX       | (1) .394 x .394 x 1.28 L         | NONE           | Plastic    | .093 OD x .010 CH               | 26 AWG 2C Shielded cable                                | 2.2 Vpp (3)                        | A - White<br>B - Black  | 290                     | 46                    | 101-01014          | (1) Unit is square along its length. The chisel tip is parallel to two sides. Color dots at rear of unit designate its chisel tip orientation (3) Measured with a gear 72 pitch, 200 teeth, 2.8" dia at 205 IPS at .004" air gap and 1K OHMS load  |
| 78       | VR437-700PP-1       | (1) .437 OD x .639 L             | NONE           | Plastic    | .093 S                          | 24 AWG PVC leads  | 40 Vpp                             | A - White<br>B - Black  | 500                     | 100                   | 101-01041-00       | (1) Case has 2 parallel flats, located .375" flat to flat.   |
| 79       | VR437-700PP-2       | (1) .437 OD x .639 L             | NONE           | Plastic    | .093 OD x .080 CH               | 24 AWG PVC leads  | 40V pp                             | A - White<br>B - Black  | 500                     | 100                   | 101-01041-01       | (1) Case has 2 parallel flats perpendicular to chisel tip, at .375" flat to flat. Unit is supplied mounted on a steel bracket.   |
| 80       | VR437-700PP-3       | (1) .437 OD x .639 L             | NONE           | Plastic    | .093 OD x .020 CH               | 24 AWG PVC leads  | 40V pp                             | A - White<br>B - Black  | 500                     | 100                   | 101-01041-02       | (1) Case has 2 parallel flats perpendicular to the chisel tip, at .375" flat to flat.  |
| 81       | VR437-1000SP        | (1) .437 OD x 1.0 L              | NONE           | Plastic    | .125 OD x .010 CH               | 28 AWG PVC leads twisted pair                           | 2.5 Vpp (3)                        | A - White<br>B - Black  | 625                     | 135                   | 101-01074          | (1) Color dot at rear of the case to indicate orientation of the chisel tip (3) Measured with a gear 100 pitch, 450 teeth at 600 IPS, .008" air gap and 100K OHMS load.  |
| 82       | VR437-1250PP        | .437 OD x 1.25 L                 | NONE           | Plastic    | .093 OD x .035 CH               | 24 AWG PVC leads  | 1.2V pp (3)                        | A - Black<br>B - Yellow | 900                     | 300                   | 101-01042          | (3) Measured sensing a bar .010" high, .010" wide moving at 168 IPS with an air gap of .009" and load of 62K OHMS  |
| 83       | VR437-1250PT        | (1) .437 OD x 1.25 L             | 7-16-20 UNF-2A | Plastic    | .093 S                          | 24 AWG PVC leads  | 17-34V pp                          | A - White<br>B - Black  | 100                     | 16                    | 101-01030          | (1) Case has 2 parallel flat full length at .343" flat to flat.  |

| Item No. | Model No.           | Case size (inches) see note 1                     | Case threads    | Case Mat'l | Pole tip (inches) see note 2 | Terminal Configuration                      | Normal Output @ STC see note 3 | Polarity see note 4    | Resistance (ohms) ± 10% | Inductance (mH) ± 10% | TSI Identification | REMARKS   |
|----------|---------------------|---|-----------------|------------|------------------------------|---|--------------------------------|------------------------|-------------------------|-----------------------|--------------------|---|
| 84       | VR437-1250PP        | .437 OD x 1.25 L                                  | NONE            | Plastic    | .093 OD x .040 C             | 24 AWG 2C Shielded cable                    | 2V pp min. (3)                 | A - Black<br>B - White | 900                     | 250                   | 101-01025          | (3) Measured with a gear 48 pitch 72 teeth 1.85" dia at 86 IPS. .008" air gap and 100K OHMS load.   |
| 85       | VR437-1250PP-XD     | (1).437 OD x 1.25 L                               | NONE            | Plastic    | .093 OD x .040 C             | 24 AWG 2C Shielded cable                    | 2V pp (3)                      | A - Black<br>B - White | 300                     | 47                    | BEX 1314           | (1) Sensing end is covered with potting, the pole tip is recessed .005" below the edge of the case. (3) Measured sensing a gear 72 teeth 48 pitch 1.85" dia at 825 RPM and .008" air gap with 100K OHMS load.   |
| 86       | VR437-1500PP-XXC    | .437 OD x 1.50 L                                  | NONE            | Plastic    | .093 OD x .025 CH            | 26 AWG PVC leads                            | 1.5V pp (3)                    | A - White<br>B - Black | 2.5K OHMS               | 825                   | EX 1677            | (3) Measured with a gear having 96 teeth and 32 diametral pitch rotating at linear velocity at 9.1 IPS and at an air gap of .005" with an external load.  |
| 87       | VR453-1220PX-XS     | (1).453 H x .472 W x 1.22 L with mounting flanges | NONE            | Plastic    | .093 OD x .020 X (2)         | 26 AWG leads Teflon                         | 7V pp (3)                      | A - White<br>B - Black | 93                      | 13                    | BEX 1484           | (1) Mounting flanges are 1.181" tip to tip with mounting slots located on a .866" apart centers. (2) Pole tip is stepped to 2 flats .020 apart. (3) Measured sensing a slot .020" wide .134" deep moving at 720 IPS and .004" air gap with 10K OHMS load.                                     |
| 88       | VR475-1800PP-XBR    | (1).850 high x 1.80 long x 1.37 wide              | NONE            | Plastic    | .170 OD x .100 CH            | 2C Shielded cable                           | 90V pp                         | A - Red<br>B - Blue    | 960                     | 280                   | 101-01049          | (1) Chisel tip is perpendicular to mounting surface. Unit mounts with 2 slotted wings located at 1.05" center to center.  |
| 89       | VR497-2057-SX-XL    | (1).497 OD x 2.057 L                              | NONE            | Steel      | .106 S                       | Connector Deutsch # DTK 02H-8-33P           | 1V pp (3)                      | A - Pin B<br>B - Pin C | 235                     | 60                    | EX 1277            | (1) Case has mounting flanges with 1.4" clearance holes located 1.18" apart. Connector is secured to the rear of the case. (3) Measured sensing a gear 16 diametral pitch, 80 teeth at 80 IPS and .020" air gap with 10K OHMS load.   |
| 90       | VR500-5880SP        | (1).500 OD x 5.88 L                               | NONE            | Steel      | .170 OD x .125 step          | 24 AWG 2C Shielded cable Teflon             | 90V pp (3)                     | A - Red<br>B - Black   | 440                     | 165                   | EX 1177            | (1) Case has a stepped OD at rear of the case. .745" OD and 1.0" long. (3) Measured with a tooth 1.8" x 1.8" x 1/8" moving at 1325 IPS and .020" air gap with 20K OHMS load.  |
| 91       | VR510-1000SP-XRB    | (1).510 OD x 1.0 L                                | NONE            | Steel      | .160 OD x .093 C             | 22 AWG 2 leads Teflon                       | 1V pp (3)                      | A - Red<br>B - Black   | 325                     | 133                   | EX 1547            | (1) Leads exit radially at the rear of the case through a notch in the case. (3) Measured with trigger teeth .24" across .635" long separated by .225", moving at 19 IPS at .020" air gap and no load.  |
| 92       | VR562-11250ST-XPW   | .563 OD x 11.25 L                                 | 9/16-18 UNJF-3A | Steel      | .170 OD x .106C              | Sealtron Connector 8001-10SL-4P-FP-F2       | 100V pp                        | A - Pin B<br>B - Pin A | 1.4K OHMS               | 470                   | EX 1649            | Case has external spline located 9.46" from the sensing end. Spline has 17 teeth and major diameter of .895". Sensing end has thread .950" long. Spline length is .365" and OD of case in rear of the spline is .695".  |
| 93       | VR625-1320ST        | (1).625 OD x 1.32 L                               | 5/8-18 UNC-2A   | Steel      | .250 OD x .100 C             | 22 AWG 2 PVC leads                          | 90V pp                         | A - Red<br>B - Black   | 1.0K OHMS               | 200                   | A 101-40013        | (1) Case has a flange in the rear .195" wide and .703" dia. Unit is supplied with 2 locknuts. Thread length is 1.00".   |
| 94       | VR625-1750PP-XTS    | .625 OD x 1.75 L                                  | NONE            | Plastic    | .170 S                       | 26 AWG 2C Shielded cable or twisted pair    | 2V pp (3)                      | A - White<br>B - Black | 1.0K OHMS               | 340                   | EX 1593            | (3) Measured sensing a cylinder target 1.12" dia. rotating radially with 4.3" dia at 4000 RPM at .330" air gap and 2.2K OHMS load.  |
| 95       | VR625-1820ST-HT-XMP | (1).625 OD x 1.82 L                               | 5/8-18 UNF-2A   | Steel      | .170 OD x .106 C             | Exposed pins .34" long (modified connector) | 26V pp                         | A - Pin B<br>B - Pin A | 80                      | 20                    | 101-01078          | (1) Thread length 1.12". Unit supplied with lock nut. This unit is a high temperature design (-300° to +800°F.)   |
| 96       | VR625-2000ST        | (1).625 OD x 2.0 L                                | 5/8-18 UNF      | Steel      | .106 S                       | 24 AWG 2C Shielded cable                    | 225V pp                        | A - Red<br>B - Black   | 1200                    | 425                   | 101-40026          | (1) Thread length is 1.425" at sensing end. Rear is knurled .76" dia. .37" long. Unit is supplied with hex nut.   |
| 97       | VR625-2250ST-1      | (1).625 OD x 2.25 L                               | 5/8-18 UNF-2A   | Steel      | .170 OD x .106 step          | MS 3101A10SL-4P connector                   | 190V pp                        | A - Pin B<br>B - Pin A | 1.45K OHMS              | 440                   | 101-01013          | (1) Unit's length includes the connector. .775" OD knurled portion of the case .6" long at the connector end. Several versions of this type of unit are available where the threaded portion of the case is the variable (up to 4.25" long).  |
| 98       | VR625-2250ST-2      | .625 OD x 2.25 L                                  | 5/8-18 UNF-2A   | Steel      | .170 OD x .106 step          | MS 3101A10SL-4P connector                   | 70V pp                         | A - Pin B<br>B - Pin A | 200                     | 85                    | 101-01023          | (1) Unit's length includes the connector. Case has thread clearance to root dia. .31" long at the sensing end and .775" OD portion .6" long at the connector end. Several versions of this type of unit are available where the threaded portion of the case is the variable (up to 6" long). |
| 99       | VRM16-2250ST        | (1).625 OD x 2.25 L                               | M16 x 1.5-6g    | Steel      | .170 OD x .106 step          | MS 3101A10SL-4P connector                   | 190 V pp                       | A - Pin B<br>B - Pin A | 1.45 K                  | 440                   | 101-01040          | (1) Unit's length includes the connector. .775" OD Knurled portion of the case .6" long at the connector end. Several versions of this type of unit are available where the threaded portion of the case is the variable (up to 4.25" long).  |
| 100      | VR625-2250ST-HT-XTD | .625 OD x 2.25 L                                  | 5/8-18 UNF-2A   | Steel      | .170 OD x .106 C             | MS 3101A10SL-4P                             | 125V pp                        | A - Pin B<br>B - Pin A | 1.4K OHMS               | 470                   | 101-01075          | (1) Unit's length includes the connector. .775" OD knurled portion of the case .6" long at the connector end. This is a high temperature unit. -100° to 450°F. Unit is supplied with lock nut.  |
| 101      | VR625-2440ST-XBR-1  | (1).625 OD x 2.44                                 | 5/8-18 UNF-2A   | Steel      | .180 OD x .070 CH            | 20 AWG 2C Shielded cable                    | 300V pp                        | A - Red<br>B - Black   | 1.4K OHMS               | 400                   | AEX 1862           | (1) Thread clearance to root dia .156" long at sensing end. Unit is supplied with 2 locknuts.   |

| Item No. | Model No.          | Case size (inches) see note 1 | Case threads     | Case Mat'l | Pole tip (inches) see note 2 | Terminal Configuration                             | Normal Output @ STC see note 3 | Polarity see note 4                 | Resistance (ohms) ± 10% | Inductance (mH) ± 10% | TSI Identification | REMARKS  |
|----------|--------------------|-------------------------------|------------------|------------|------------------------------|--|--------------------------------|-------------------------------------|-------------------------|-----------------------|--------------------|--|
| 102      | VR625-2531ST       | (1).625 OD x 2.531 L          | 5/8-18 UNF-2A    | Steel      | .187 S                       | MS 3101A10SL-4P connector                          | 70V pp (3)                     | A - Pin B<br>B - Pin A              | 200                     | 65                    | 101-01020          | (1) Unit's length includes the connector. Thread length 1.437" knurled portion .6" long .750" OD at connector end. Case has thread clearance to root dia .312" long at sensing end. (3) Measured with 8 pitch 12 teeth gear rotating at 1000 IPS at .005" air gap and 1.25K OHMS load. |
| 103      | VR625-2725ST -XRLC | .625 OD x 2.725 L             | 5/8-18 UNF-2A    | Steel      | .170 OD x .106 C             | 24 AWG 2C Shielded cable                           | 190V pp                        | A - Red<br>B - Black                | 1.2K OHMS               | 400                   | 101-01068          | (1) Thread length is 2.125". Knurled portion .6" long. .76" OD Unit supplied with locknut.   |
| 104      | VR625-3125ST -XHB  | (1).625 OD x 3.125 L          | 5/8-18 UNF-2A    | Steel      | .187 S                       | 22 AWG 2 leads Teflon                              | 12V pp                         | A - White<br>B - Black              | 68                      | 25                    | EX 1350            | (1) Thread full length Unit supplied with locknut.   |
| 105      | VR625-3600ST -XCT  | (1).625 OD x 3.6 L            | 5/8-18 UNF-2A    | Steel      | .170 S                       | 22 AWG 2C Shielded cable                           | 13V pp (3)                     | A - Red<br>B - Black                | 185                     | 55                    | EX 1935            | (1) Thread relief at sensing end .3" long. Knurled portion .6" long at cable end. (3) Measured sensing 8 pitch 12 teeth gear at 600 IPS with .035" air gap and 500 OHMS load.  |
| 106      | VR687-2925         | (1).687 OD x 2.925 L          | 11-16-24 UNEF-2A | Steel      | .170 OD x .125 step          | 18 AWG 2 leads PVC 6 spade lugs                    | 150V pp                        | A - Red<br>B - Black                | 1.2K OHMS               | 440                   | EX 1164            | (1) Thread length .75" at the sensing end. Knurled section at leads end .5" long. Between thread and knurl, OD is 1.116"   |
| 107      | VR750-1250SP -XMF  | .750 OD x 1.25 L              | NONE             | Steel      | .220 S                       | molded automotive male/female connector            | 200mV pp (3)                   | A - Male<br>B - Female              | 620                     | 680                   | BEX 1727           | (3) Measured with timing wheel with teeth .5" long and .56" between teeth. .75" deep. moving at 10 IPS with .060" air gap and 10K OHMS load.   |
| 108      | VR750-2000ST -XBE  | .750 OD x 2.0 L               | 3/4-16 UNF-2A    | Steel      | .170 S                       | 22 AWG 2 leads PVC                                 | 18V pp (3)                     | A - Red<br>B - Black                | 5.9K OHMS               | 3.5H                  | AEX 1638           | (3) Measured with a timing wheel with teeth .442" long separated by .700" gap .59" deep at .065" air gap and 100 IPS with no load.   |
| 109      | VR750-2000ST -XE   | (1).750 OD x 2.0 L            | 3/4-16 UNF-2A    | Steel      | .170 OD x .106 C             | 26 AWG 2C Shielded cable                           | 125V pp                        | A - White<br>B - Black              | 1450                    | 665                   | AEX 1636           | (1) Thread length is 1.425" at sensing end. Rear is knurled .76" dia. .37" long.   |
| 110      | VR750-2000PT -XIH  | .750 OD x 2.0 L               | 3/4-16 UNF-2A    | Plastic    | .170 S                       | 22 AWG 2 leads PVC                                 | 18 V pp (3)                    | A - Red<br>B - Black                | 5.9 K OHMS              | 3.5H                  | AEX 1839           | (3) Measured with a timing wheel with teeth .442" long separated by .700" gap .59" deep at .065" air gap and 100 IPS with no load.   |
| 111      | VR750-2260PP -XJD  | (1).750 OD x 2.26 L           | NONE             | Plastic    | .170 S                       | 2 threaded terminals 10-32 UNF-2A Brass .335" long | 7V pp (3)                      | A - Marked terminal<br>B - Unmarked | 1.0K OHMS               | 290                   | BEX 1814           | (1) .75" dia at sensing end 1.12" long. Rear has a shoulder 1.38" dia 1.14" long. Output terminals are .335" long located on .75" center to center. (3) Measured sensing a bar 1/8" W x 1/2" H x 1/2" L moving at 100 IPS with .020" air gap and 500 OHMS load.                        |
| 112      | VR750-2660AT -XJD  | (1).750 OD x 2.66 L           | 3/4-16 UNF-2A    | Alum.      | .170 S                       | 2 threaded terminals .34" long. 8-32 UNC. Brass    | 40V pp                         | A - +<br>B - not marked             | 1K OHMS                 | 165                   | 101-01047          | (1) Thread length 1.67". Output terminals are in a raised phenolic pad. 2 other versions of this unit are available where the thread length changes to 3.38" and 5.5"  |
| 113      | VR900-1500PP       | .900 OD x 1.5 L               | NONE             | Plastic    | .170 OD x .125 step          | 16 AWG 2 leads Hypalon                             | 110V pp                        | A - Red<br>B - Black                | 440                     | 175                   | BEX 1545           | (1) .90" OD at sensing end .655" long followed by a mounting bracket with mounting holes (5/16" OD) separated 1.58" center to center. OD at leads end is .54"  |
| 114      | VR1250-2500ST -XBE | 1.25 OD x 2.5 L               | 1-1/4"-12 UNF-2A | Steel      | .220 S                       | 22 AWG 2 leads PVD                                 | 18V pp (3)                     | A - Red<br>B - Black                | 2.6K OHMS               | 4.1H                  | AEX 1686           | (3) Measured with a timing wheel with teeth .442" long separated by .7" gap .59" deep. at .065" air gap and 40 IPS with no load.   |

**NOTES**

- See REMARKS for special case configuration. .250" diameter units are available in 1/4 - 40 threads at extra charge
- Pole tip identification:  
S = straight  
C = conical  
Ch = chisel  
X = special configuration (see appropriate REMARKS column) Chisel tipped pole pieces available for special applications.
- Standard Test conditions  
Gear: pitch - 20; teeth - 30;  
mat'l - steel (magnetic)  
Air Gap: .005" (0.13 mm)  
Surface speed: 1000 IPS  
Load: 100 K
- With the approach of ferrous metal, the voltage on terminal "A" will be positive with respect to terminal "B".
- Temperature: - 40° to + 225° F.  
(- 40° to + 107° C.) Except where noted differently on specification.  
(Higher temperature units available as special option.)
- Lead lengths per customer specifications.