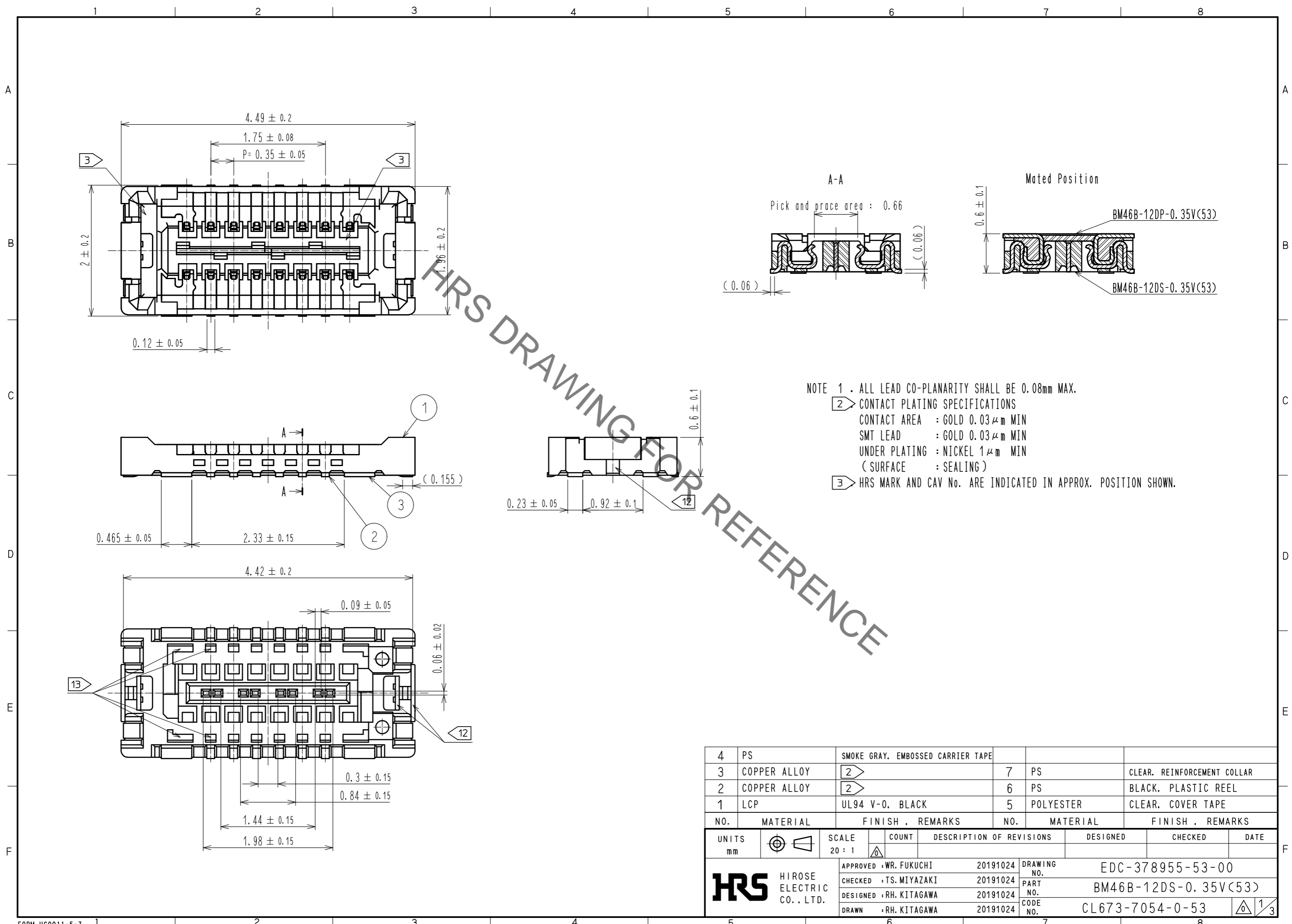


Aug.1.2020 Copyright 2020 HIROSE ELECTRIC CO., LTD. All Rights Reserved.  
In case of consideration for using Automotive equipment / device which demand high reliability, kindly contact our sales window correspondents.



HRS DRAWING FOR REFERENCE

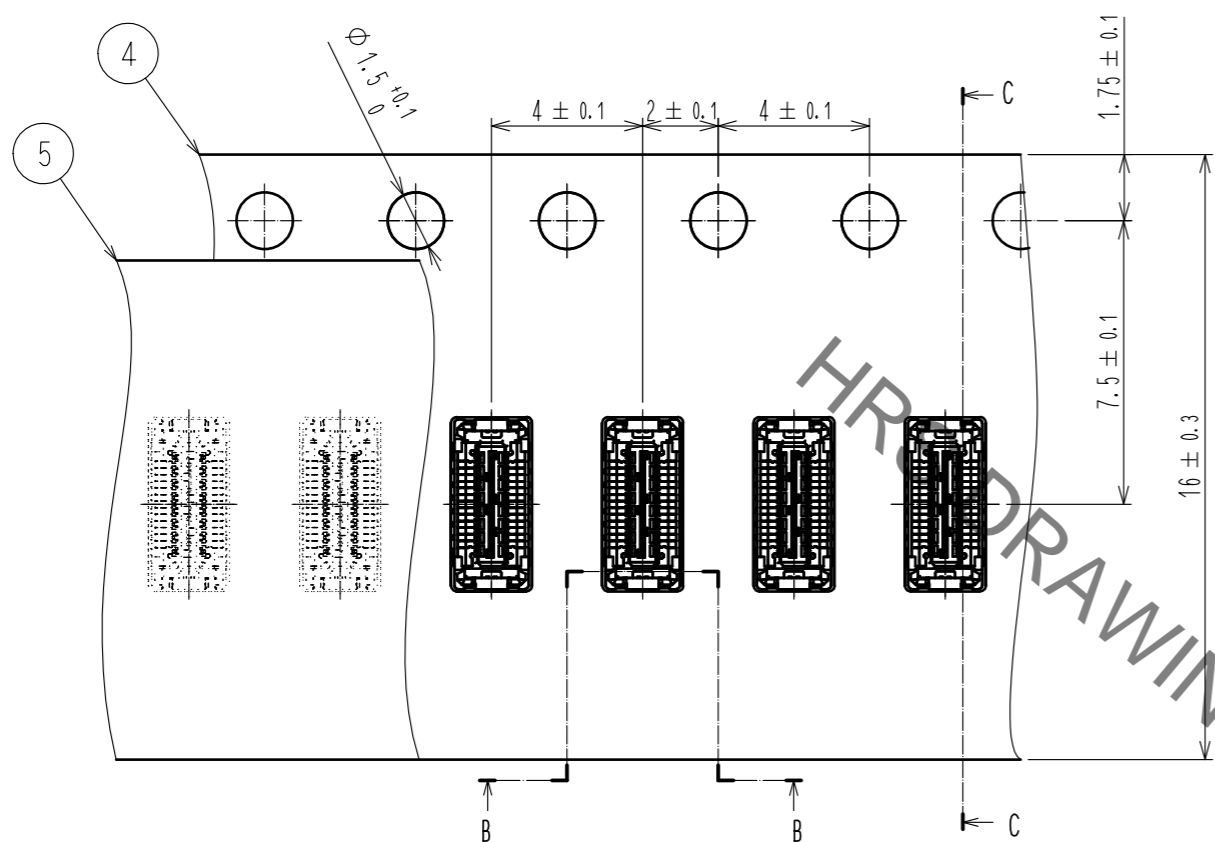
- NOTE 1 . ALL LEAD CO-PLANARITY SHALL BE 0.08mm MAX.  
 2 CONTACT PLATING SPECIFICATIONS  
 CONTACT AREA : GOLD  $0.03 \mu\text{m}$  MIN  
 SMT LEAD : GOLD  $0.03 \mu\text{m}$  MIN  
 UNDER PLATING : NICKEL  $1 \mu\text{m}$  MIN  
 ( SURFACE : SEALING )  
 3 HRS MARK AND CAV No. ARE INDICATED IN APPROX. POSITION SHOWN.

4	PS	SMOKE GRAY, EMBOSSED CARRIER TAPE			
3	COPPER ALLOY	2	7	PS	CLEAR, REINFORCEMENT COLLAR
2	COPPER ALLOY	2	6	PS	BLACK, PLASTIC REEL
1	LCP	UL94 V-0, BLACK	5	POLYESTER	CLEAR, COVER TAPE
NO.	MATERIAL	FINISH . REMARKS	NO.	MATERIAL	FINISH . REMARKS
UNITS		SCALE	COUNT	DESCRIPTION OF REVISIONS	
mm		20 : 1		DESIGNED	CHECKED
<b>HRS</b> HIROSE ELECTRIC CO., LTD.		APPROVED : WR. FUKUCHI	20191024	DRAWING NO. EDC-378955-53-00	
		CHECKED : TS. MIYAZAKI	20191024	PART NO. BM46B-12DS-0.35V(53)	
		DESIGNED : RH. KITAGAWA	20191024	CODE NO. CL673-7054-0-53	
		DRAWN : RH. KITAGAWA	20191024	1/3	

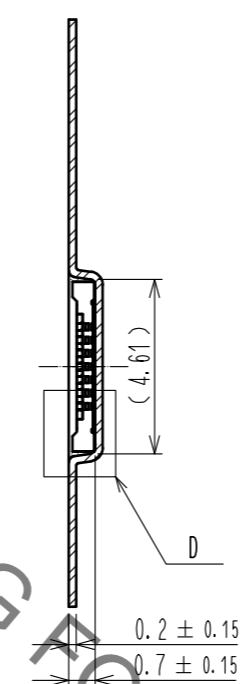


Aug.1.2020 Copyright 2020 HIROSE ELECTRIC CO., LTD. All Rights Reserved.  
In case of consideration for using Automotive equipment / device which demand high reliability, kindly contact our sales window correspondents.

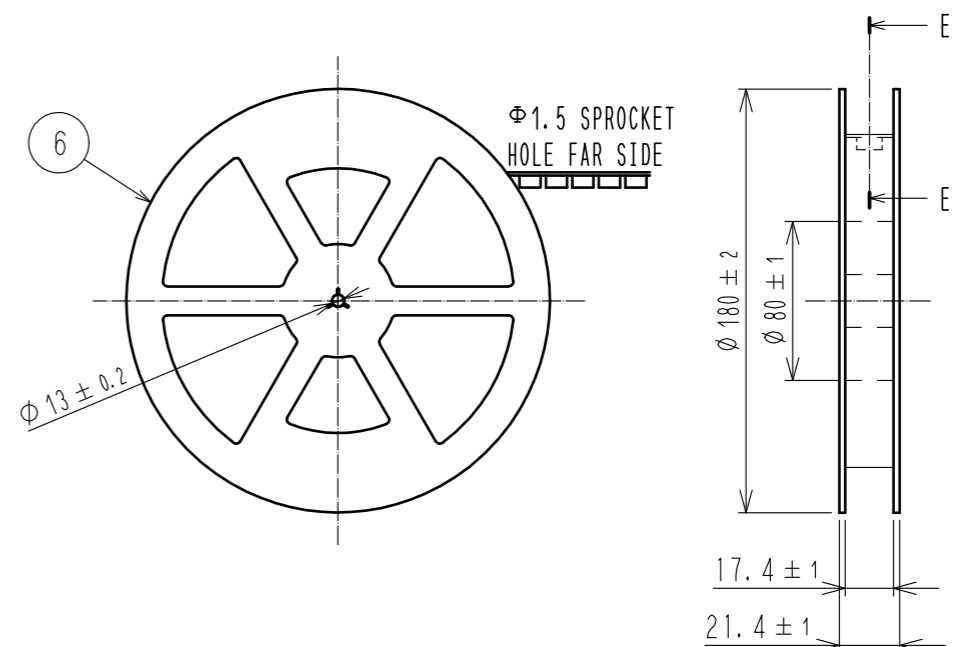
### EMBOSED CARRIER TAPE PACKAGING (5:1)



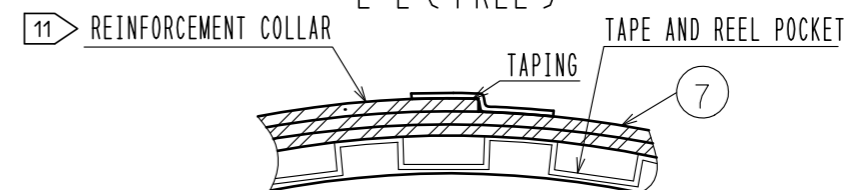
### C-C (5:1)



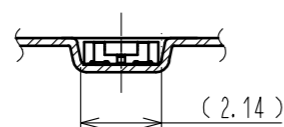
### STYLE AND DIMENSION OF REEL (FREE)



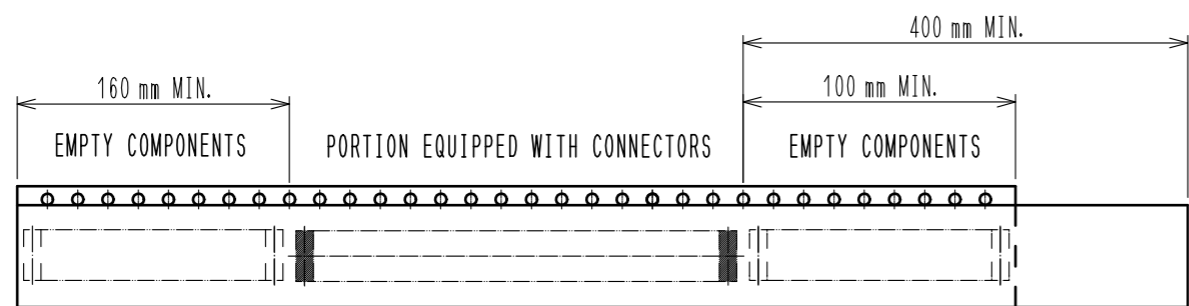
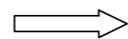
### E-E (FREE)



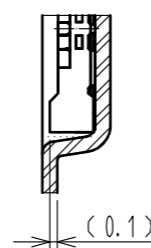
### B-B (5:1)



DIRECTION OF UNREELING



### D (10:1)



(LABEL DELETED)

- 8 . PER REEL 1,000 CONNECTORS.
- 9 . THE DIMENSIONS IN PARENTHESES ARE FOR REFERENCE.
- 10 REFER TO IEC 60286-3 (PACKAGING OF COMPONENTS FOR AUTOMATIC HANDLING)
- 11 AFTER PACKAGING, ROLL 2 METERS OF THE REINFORCEMENT COLLAR TO OUTER CIRCUMFERENCE OF TAPE AND REEL POCKET, AND TAPE DOWN AT THE END THE COLLAR.
- 12 METAL OR RESIN IS ACCEPTABLE FOR THIS AREA.
- 13 NO GOLD PLATING IS ACCEPTABLE FOR THIS AREA.

TRAILER

10 TAPING(FREE)

LEADER

<b>HRS</b>	DRAWING NO.	EDC-378955-53-00
	PART NO.	BM46B-12DS-0.35V(53)
	CODE NO.	CL673-7054-0-53
		3/3