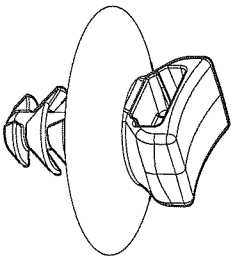
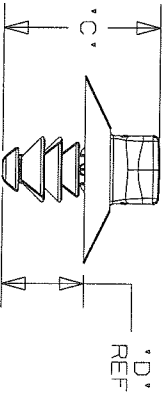
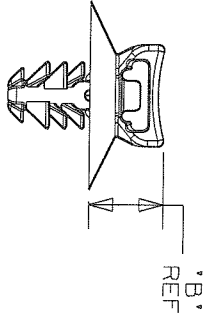
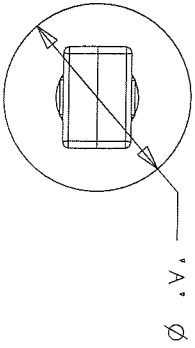


THIS COPY IS PROVIDED ON A RESTRICTED BASIS AND IS NOT TO BE USED IN ANY WAY DETRIMENTAL TO THE INTERESTS OF PANDUIT CORPORATION.

PANDUIT PART NUMBER	USED WITH CABLE TIES	DIMENSIONS				MATERIAL	WEIGHT grams/100pcs
		A	*B* (REF)	*C*	*D* (REF)		
PUM-049-_30	M, 1, S	16.5	6.6	13.8	7.2	HEAT STABILIZED NYLON 6/6 BLACK	33 g

NOTES:

1. SEE CURRENT PRICE SHEET FOR PART NUMBER SUFFIX DESIGNATION FOR PACKAGE SIZE, AND COLOR.
2. (*) DIMENSIONAL VARIANCE IS POSSIBLE DUE TO MOLDING PROCESS RELATED SINK MARKS.
3. APPLICATION SPECIFICATION:
 HOLE DIAMETER: 4.6 - 4.9 mm
 PANEL THICKNESS: 0.7 - 3.0 mm



SCALE 2:1

CAD FILENAME/LAYERS

G03151BA_DC_GB0239ML/05A

PANDUIT

CORP.

TINLEY PARK, ILLINOIS

PUM-049-_30
 PUSH UMBRELLA MOUNT 049

UNLESS OTHERWISE SPECIFIED, ALL DIMENSIONS ARE METRIC TOLERANCE: ±0.5MM

REV	DATE	BY	CHK	DESCRIPTION	ECON	R	CUST	SUP
05A	8/22/08	PSG	<i>KLW</i>	REMOVED RIB FROM HEAD, UPDATED FILE NAME AND CHANGED REV TO TC REV STYLE	GB0239ML	05A	<i>KLW</i>	
1	5/5/08	DJSM		REVISED DIMENSIONS TO MATCH CATALOG	GB0239ML	1		
R	8-11-06	TMSA		INITIAL RELEASE	GB0239ML	R		
REV	DATE	BY	CHK	DESCRIPTION	ECON	R	CUST	SUP

DRAWN BY	TMSA	MAT'L:	
DATE	8-11-06	SCALE	1:1 UNLESS NOTED
CHK'D	<i>KLW</i>	DWG	A
		DWG NO.	GB0239ML
		SIZE	A

SEE TABLE

Mouser Electronics

Authorized Distributor

Click to View Pricing, Inventory, Delivery & Lifecycle Information:

[Panduit:](#)

[PUM-049-C30](#) [PUM-049-M30](#)