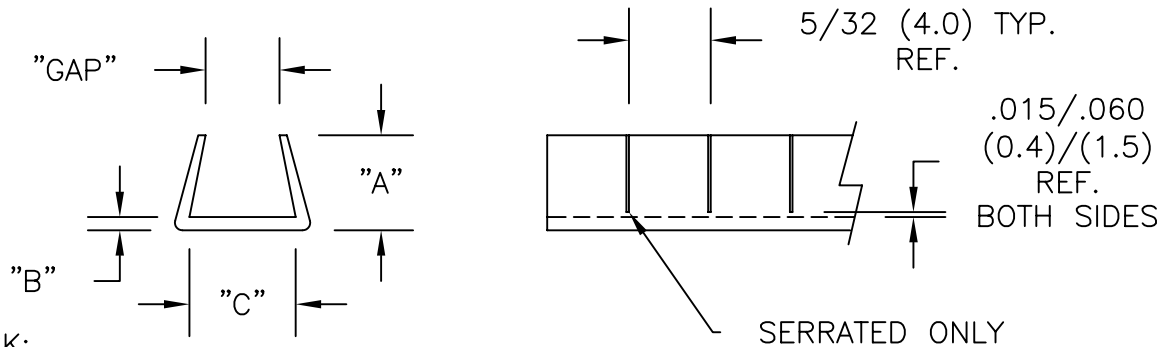


PART NO.		MATERIAL	"A" REF.	"B" REF.	"C" REF.	PANEL THICKNESS RANGE	"GAP" REF.	
SOLID LENGTHS	SERRATED LENGTHS							
*NGS-1	SNGS-1	NYLON (RMS-21)	.125 (3.2)	.031 (0.8)	.031 (0.8)	.026-.036 (0.7-0.9)	.018 (0.5)	
*NGS-2	SNGS-2		.172 (4.4)		.109 (2.8)	.037-.071 (0.9-1.8)	.037 (0.9)	
NGS-2.5	SNGS-2.5		.188 (4.8)		.156 (4.0)	.072-.105 (1.8-2.7)	.060 (1.5)	
*NGS-3	SNGS-3		POLYETHYLENE (RMS-06)	.125 (3.2)	.031 (0.8)	.106-.164 (2.7-4.2)	.106 (2.7)	
**NGS-4	SNGS-4					.188 (4.8)	.165-.187 (4.2-4.7)	.165 (4.2)
*NGS-5	SNGS-5					.250 (6.4)	.188-.250 (4.8-6.4)	.187 (4.8)
PGS-1	SPGS-1	POLYETHYLENE (RMS-06)		.172 (4.4)	.031 (0.8)	.026-.036 (0.7-0.9)	.018 (0.5)	
PGS-2	SPGS-2					.037-.071 (0.9-1.8)	.037 (0.9)	
PGS-2.5	SPGS-2.5		.072-.105 (1.8-2.7)			.060 (1.5)		
PGS-3	SPGS-3		.156 (4.0)	.106-.164 (2.6-4.2)	.106 (2.7)			
*PGS-4	SPGS-4				.188 (4.8)	.165-.187 (4.2-4.7)	.165 (4.2)	
*PGS-5	SPGS-5	.250 (6.4)	.188-.250 (4.8-6.4)	.187 (4.8)				

*BLACK PARTS AVAILABLE BY SPECIAL ORDER ONLY
 ** PART AVAILABLE BY SPECIAL ORDER IN BOTH COLORS



- NOTES:
 1. COLOR: NATURAL OR BLACK;
 ADD SUFFIX "B" FOR BLACK
 2. LENGTH: 100 FT (3048 cm).

I	SEE CO 200035 FOR CHANGES	SK 09.26.07
H	SEE ECN 899	SM 01.03.05
G	RMS-06 WAS RMS-13	DLC 12.11.01
F	REVISED .015/.060 (.4)/(1.5) WAS .015/.055 TABLE CORRECTED PER NGS PRINT AND CHANGED FROM FRACTIONAL TO DECIMAL	DLC 7/31/01
E	CHANGED FILE NO.	SM 07.24.01
D	TABLE CORRECTED	SM 06.27.01
C	ADDED PGSR & SPGR SERIES	SM 04.10.01
B	CONVERTED TO ACAD	JB 07.10.96
A	DESCRIPTION	PB 06.28.95
REV		ENGR DATE

TITLE: GROMMET STRIP-SERIES		DWG IN IN (MM)	FINAL
FILE # NGS	DWN: P.B.	APP:	
MAT'L: SEE NOTES	DT: 06-28-95	DT:	PART #
RE: RICHCO, INC.	RICHCO INC. PO BOX 804238, CHICAGO, 60680 (773) 539-4060		SEE TABLE
TOLERANCES UNLESS NOTED .XX=±.020 .XXX=±.015 FRAC=±1/64 ANG=±1'			PRINT TYPE CA

Mouser Electronics

Authorized Distributor

Click to View Pricing, Inventory, Delivery & Lifecycle Information:

Essentra:

[PGS-2.5](#) [PGS-2B](#) [PGS-2](#) [PGS-1B](#) [PGS-2.5B](#) [SPGS-2](#) [SPGS-2.5](#) [SPGS-2.5B](#) [SPGS-3](#) [SNGS-3](#) [SNGS-3B](#)
[SNGS-4](#) [SNGS-4B](#) [SNGS-5](#) [SNGS-2](#) [SNGS-2.5](#) [SNGS-2.5B](#) [SNGS-2B](#) [NGS-1](#) [NGS-2](#) [PGS-1](#) [PGS-3](#) [SNGS-1](#)
[SNGS-1B](#) [SPGS-1](#)