

(1.27 mm) .050"

# HIGH-SPEED/HIGH-DENSITY OPEN-PIN-FIELD

## SPECIFICATIONS

For complete specifications and recommended PCB layouts see [www.samtec.com?SEAF](http://www.samtec.com?SEAF)

**Insulator Material:**  
Black LCP

**Contact Material:**  
Copper Alloy

**Operating Temp Range:**  
-55 °C to +125 °C

**Current Rating**  
(7 mm stack height):  
2.7 A per pin  
(10 adjacent pins powered)

**Plating:**  
Au or Sn over  
50 μ" (1.27 μm) Ni

**Working Voltage:**  
240 VAC

**RoHS Compliant:**  
Yes (-2 Solder type only)

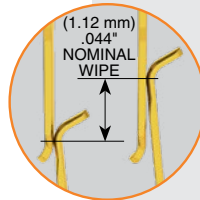
**Lead-Free Solderable:**  
Yes

**Board Mates:**  
SEAM, SEAMP,  
SEAR, SEAMI

**Cable Mates:**  
SEAC\*

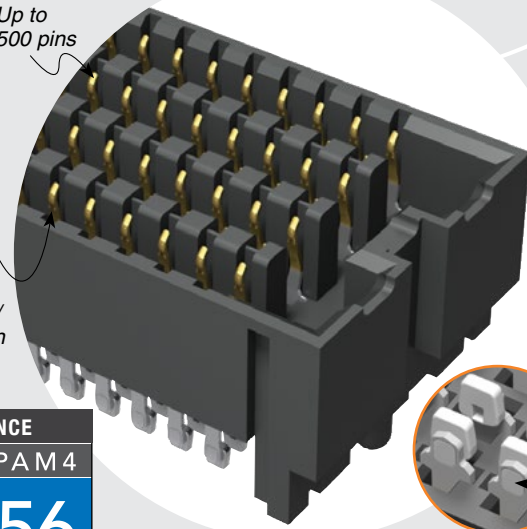
**Standoffs:**  
JSO

\*NOTE:  
SEAF is recommended  
to mate to SEAC cable.  
Visit [www.samtec.com?SEAF](http://www.samtec.com?SEAF)  
for specifications.



Up to  
500 pins

Low  
insertion/  
extraction  
forces



Solder  
charges

## HIGH-SPEED CHANNEL PERFORMANCE

SEAF/SEAM @ 10 mm Mated Stack Height

Rating based on Samtec reference channel.  
For full SI performance data visit [www.samtec.com](http://www.samtec.com)  
or contact [SIG@samtec.com](mailto:SIG@samtec.com)

PAM 4

56  
Gbps

## RECOGNITIONS

For complete scope of  
recognitions see  
[www.samtec.com/quality](http://www.samtec.com/quality)

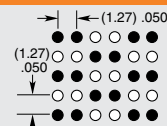


## STANDARDS

- VITA 47
- VITA 57.1 FMC
- VITA 57.4 FMC+
- VITA 74 VNX
- PISMO™ 2

Visit [www.samtec.com/standards](http://www.samtec.com/standards)  
for more information.

## DIFFERENTIAL SIGNAL ROUTING



The above signal routing  
configuration allows for  
the use of 25 to 125  
differential pair counts.  
Contact [sig@samtec.com](mailto:sig@samtec.com)  
for specific details.

## Notes:

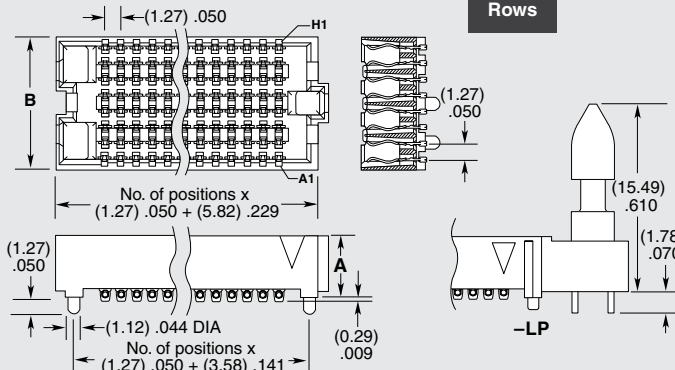
IPC-A-610F and  
IPC J-STD-001F Class 3  
solder joint.

Some sizes, styles and  
options are non-standard,  
non-returnable.

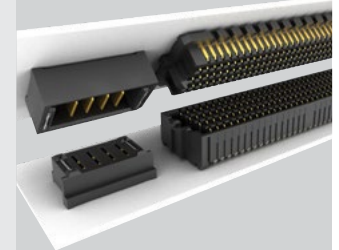
SEAF	NO. PINS PER ROW	LEAD STYLE	PLATING OPTION	NO. OF ROWS	SOLDER TYPE	A	OPTION	K	"X"R
	-10, -15, -20, -30, -40, -50	Specify LEAD STYLE from chart	-L = 10 μ" (0.25 μm) Gold on contact area, Matte Tin on solder tail -S = 30 μ" (0.76 μm) Gold on contact area, Matte Tin on solder tail	-04 = Four Rows -05 = Five Rows -06 = Six Rows -08 = Eight Rows -10 = Ten Rows	-1 = Tin/Lead Alloy Solder Charge -2 = Lead-Free Solder Charge		-LP = Latch Post (-LP required for SEAC mate only) (Available with -05.0 lead style and -04, -06, -08 & -10 rows only)		-TR = Tape & Reel -FR = Full Reel Tape & Reel Packaging (Must order max. quantities per reel. Contact Samtec for parts per reel)

NO. OF ROWS	B
-04	(5.66) .223
-05, -06	(8.20) .323
-08	(10.74) .423
-10	(13.28) .523

LEAD STYLE	A
-05.0	(5.05) .199
-06.0	(6.05) .238
-06.5	(6.55) .258
-07.5	(7.54) .297



## POWER/SIGNAL APPLICATION



Compatible with  
UMPT/UMPS for flexible  
two-piece power/signal solutions

Due to technical progress, all designs, specifications and components are subject to change without notice.

[WWW.SAMTEC.COM](http://WWW.SAMTEC.COM)

All parts within this catalog are built to Samtec's specifications.  
Customer specific requirements must be approved by Samtec and identified in a Samtec customer-specific drawing to apply.

# Mouser Electronics

Authorized Distributor

Click to View Pricing, Inventory, Delivery & Lifecycle Information:

## Samtec:

[SEAF-40-01-L-06-2-RA-GP-TR](#) [SEAF-30-06.0-S-06-2-A-K-TR](#) [SEAF-50-05.0-S-08-2-A-K-TR](#) [SEAF-40-06.0-S-08-2-A-K-TR](#) [SEAF-50-05.0-L-10-2-A-K-TR](#) [SEAF-30-05.0-L-06-2-A-K-TR](#) [SEAF-40-05.0-S-08-2-A-K-TR](#) [SEAF-20-05.0-S-08-2-A-K-TR](#) [SEAF-50-01-L-06-2-RA-GP-TR](#) [SEAF-10-06.0-L-04-2-A-K-TR](#) [SEAF-50-05.0-S-10-2-A-K-TR](#) [SEAF-20-05.0-S-10-1-A-K-TR](#) [SEAF-30-06.0-S-04-2-A-K-TR](#) [SEAF-20-05.0-S-06-1-A-K-TR](#) [SEAF-30-06.5-S-10-2-A-K-TR](#) [SEAF-40-05.0-L-10-1-A-K-TR](#) [SEAF-20-06.5-S-10-2-A-K-TR](#) [SEAF-40-01-L-10-2-RA-GP-K-TR](#) [SEAF-20-05.0-L-10-2-A-K-TR](#) [SEAF-30-06.5-S-06-2-A-K-TR](#) [SEAF-50-06.0-S-10-2-A-K-TR](#) [SEAF-20-06.0-S-08-2-A-K-TR](#) [SEAF-20-01-L-04-2-RA-TR](#) [SEAF-30-06.5-L-10-1-A-K-TR](#) [SEAF-50-01-L-08-2-RA-K-TR](#) [SEAF-10-06.5-S-04-2-A-K-TR](#) [SEAF-50-05.0-S-04-2-A-K-TR](#) [SEAF-50-05.0-L-06-2-A-K-TR](#) [SEAF-40-06.0-S-06-2-A-K-TR](#) [SEAF-50-01-L-06-2-RA-GP-K-TR](#) [SEAF-50-01-S-10-2-RA-K-TR](#) [SEAF-15-05.0-S-10-2-A-K-TR](#) [SEAF-40-06.5-L-10-1-A-K-TR](#) [SEAF-40-06.0-L-08-2-A-K-TR](#) [SEAF-30-05.0-S-08-2-A-K-TR](#) [SEAF-40-06.0-S-04-2-A-K-TR](#) [SEAF-20-06.0-L-06-2-A-K-TR](#) [SEAF-50-06.0-L-04-2-A-K-TR](#) [SEAF-10-05.0-S-04-2-A-K-TR](#) [SEAF-40-05.0-L-04-1-A-K-TR](#) [SEAF-40-06.0-S-10-2-A-K-TR](#) [SEAF-40-06.5-L-06-2-A-K-TR](#) [SEAF-40-05.0-S-08-1-A-K-TR](#) [SEAF-30-05.0-S-10-2-A-K-TR](#) [SEAF-40-05.0-L-06-2-A-K-TR](#) [SEAF-50-05.0-S-06-2-A-K-TR](#) [SEAF-20-06.5-L-10-2-A-K-TR](#) [SEAF-30-06.5-L-10-2-A-K-TR](#) [SEAF-20-06.0-S-06-2-A-K-TR](#) [SEAF-50-01-L-04-2-RA-GP-TR](#) [SEAF-50-06.0-S-06-2-A-K-TR](#) [SEAF-20-06.5-S-05-2-A-K-TR](#) [SEAF-20-01-L-04-2-RA-GP-TR](#) [SEAF-20-06.5-S-08-2-A-K-TR](#) [SEAF-40-06.0-L-10-2-A-K-TR](#) [SEAF-50-05.0-L-04-2-A-K-TR](#) [SEAF-20-05.0-S-04-2-A-K-TR](#) [SEAF-20-06.5-S-06-2-A-K-TR](#) [SEAF-30-05.0-L-08-2-A-K-TR](#) [SEAF-40-05.0-L-10-2-A-K-TR](#) [SEAF-40-01-L-10-2-RA-GP-TR](#) [SEAF-10-05.0-L-04-2-A-K-TR](#) [SEAF-50-05.0-L-08-2-A-K-TR](#) [SEAF-50-06.0-S-08-2-A-K-TR](#) [SEAF-40-05.0-S-04-2-A-K-TR](#) [SEAF-40-01-L-04-2-RA-GP-TR](#) [SEAF-50-06.0-L-06-2-A-K-TR](#) [SEAF-40-01-L-04-1-RA-GP-TR](#) [SEAF-30-05.0-L-04-2-A-K-TR](#) [SEAF-40-05.0-S-06-2-A-K-TR](#) [SEAF-40-05.0-S-10-1-A-K-TR](#) [SEAF-30-05.0-S-04-2-A-K-TR](#) [SEAF-30-06.5-L-08-2-A-K-TR](#) [SEAF-40-06.5-S-04-2-A-K-TR](#) [SEAF-20-06.0-L-04-2-A-K-TR](#) [SEAF-30-05.0-L-06-2-A-LP-K-TR](#) [SEAF-20-05.0-L-08-2-A-K-TR](#) [SEAF-50-01-L-04-2-RA-TR](#) [SEAF-40-05.0-S-10-2-A-K-TR](#) [SEAF-30-01-L-04-2-RA-GP-TR](#) [SEAF-50-06.5-S-08-2-A-K-TR](#) [SEAF-20-05.0-L-08-1-A-K-TR](#) [SEAF-50-06.5-L-10-2-A-K-TR](#) [SEAF-40-05.0-L-04-2-A-K-TR](#) [SEAF-50-01-S-10-2-RA-GP-K-TR](#) [SEAF-30-06.5-S-04-2-A-K-TR](#) [SEAF-30-06.5-S-08-2-A-K-TR](#) [SEAF-40-05.0-S-06-1-A-K-TR](#) [SEAF-30-06.5-L-06-2-A-K-TR](#) [SEAF-30-05.0-L-04-2-A-LP-K-TR](#) [SEAF-50-01-S-10-1-RA-GP-TR](#) [SEAF-50-06.5-S-10-2-A-K-TR](#) [SEAF-30-06.0-L-06-2-A-K-TR](#) [SEAF-10-06.5-L-04-2-A-K-TR](#) [SEAF-20-05.0-S-06-2-A-K-TR](#) [SEAF-20-06.5-S-04-2-A-K-TR](#) [SEAF-50-05.0-S-06-1-A-K-TR](#) [SEAF-50-01-L-10-2-RA-GP-K-TR](#) [SEAF-20-01-L-06-2-RA-LP-TR](#) [SEAF-20-05.0-S-05-2-A-K-TR](#)