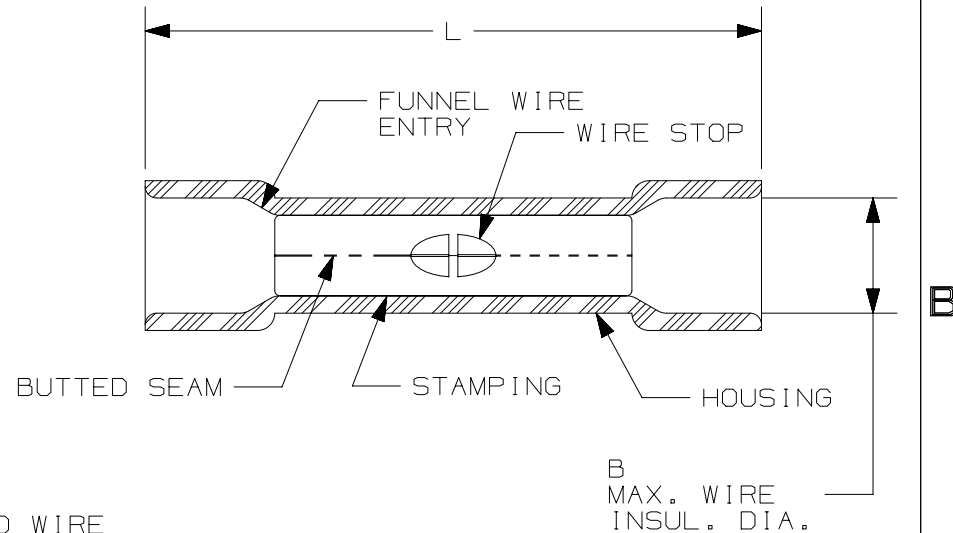


THIS COPY IS PROVIDED ON A RESTRICTED BASIS AND IS NOT TO BE USED IN ANY WAY DETRIMENTAL TO THE INTERESTS OF PANDUIT CORP.

PANDUIT PART #	WIRE SIZE AWG [mm ²]	COLOR	DIMENSIONS in. [mm]	
			L± .03 [0,8]	B± .01 [0,3]
ESV18BX	#22-18 [0,5-1,0]	RED	1.03 [26,2]	.17 [4,3]
ESV14BX	#16-14 [1,5-2,5]	BLUE	1.04 [26,4]	.20 [5,1]
ESV10BX	#12-10 [4,0-6,0]	YELLOW	1.18 [30,0]	.25 [6,4]

NOTES:

- USED FOR:
 - SOLID OR STRANDED COPPER WIRE
 - 221°F [105°C] MAX OPERATING TEMPERATURE
 - 600V MAX VOLTGE RATING
 - ESV10BX 300V MAX VOLTAGE RATING WITH 10 AWG SOLID WIRE
- INSTALLATION TOOLS: CT-100A, CT-160, CT-260, CT-1550, CT-1551, CT-600A (CT-550CH), CT-2500 (CT-2550CH)
 - #22-18 AWG [0,5-1,0 mm²]: CT-100A, CT-160, CT-260, CT-400, CT-600A (CT-550CH), CT-2500 (CT-2550CH)
 - #16-14 AWG [1,5-2,5 mm²]: CT-100A, CT-160, CT-260, CT-400, CT-460, CT-600-A, CT-2500
 - #12-10 [4,0-6,0 mm²] STRANDED AND #12 AWG SOLID COPPER WIRE WITH CT-1550 & CT-1551 TOOLS: CT-100A, CT-160, CT-260, CT-460, CT-600-A (CT-550CH), CT-2500 (CT-2550CH)
- WIRE STRIP LENGTH: 5/16" ^{+1/32}₋₀ [7,9mm ^{+0,8}₋₀]
- MATERIAL:
 - STAMPING (#22-18 & #16-14): .03" [0,8] THK COPPER, TIN PLATED
 - STAMPING (#12-10): .04" [1,0] THK COPPER, TIN PLATED
 - HOUSING: VINYL
- SEE www.panduit.com FOR PACKAGE QUANTITIES INDICATED BY PART NUMBER SUFFIX
- DIMENSIONS IN BRACKETS ARE METRIC EQUIVALENT



LISTED
587H
E52164



CERTIFIED
LR31212

TITLE STRONGHOLD BUTT SPLICE, EXPANDED DIAMETER VINYL INSULATED, BUTTED SEAM #22-10 AWG		CUSTOMER DRAWING						
ITEM REVISION NAME 00123SHC/00		PANDUIT						
DATASET FILE NAME 00123SHC_DC/00A								
UNLESS OTHERWISE SPECIFIED, DIMENSIONAL TOLERANCES ARE: IN [mm] .x ± .1 [2.54] .xxx ± .005 [0.127] .xx ± .01 [0.25] ANGLES ± 5°		MATERIAL: SEE NOTES						
DRAWN BY TMR		DRAWING NUMBER: SH41181						
DATE 10.10.17	CHK JHNU	SCALE N.T.S.	SHT 1 OF 1					
REV	DATE	BY	CHK	APR	DESCRIPTION	ECN	SCALE	SIZE
00	10.10.17	TMR	JHNU	RGB	DRAWING RELEASED	00123SH	N.T.S.	A

D10100DA/15