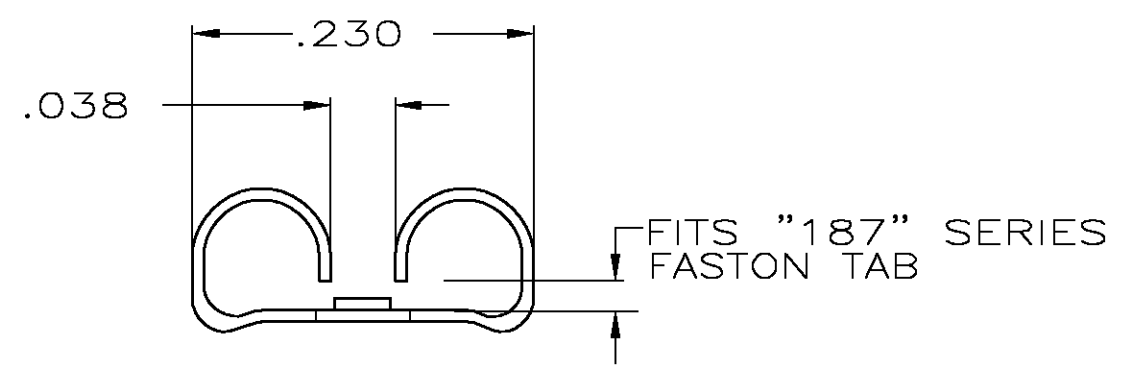
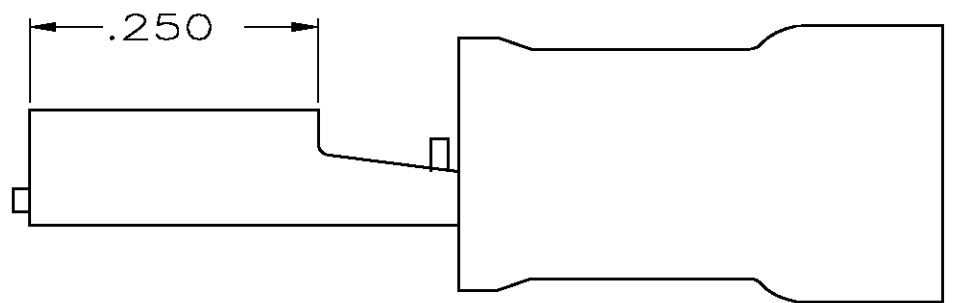
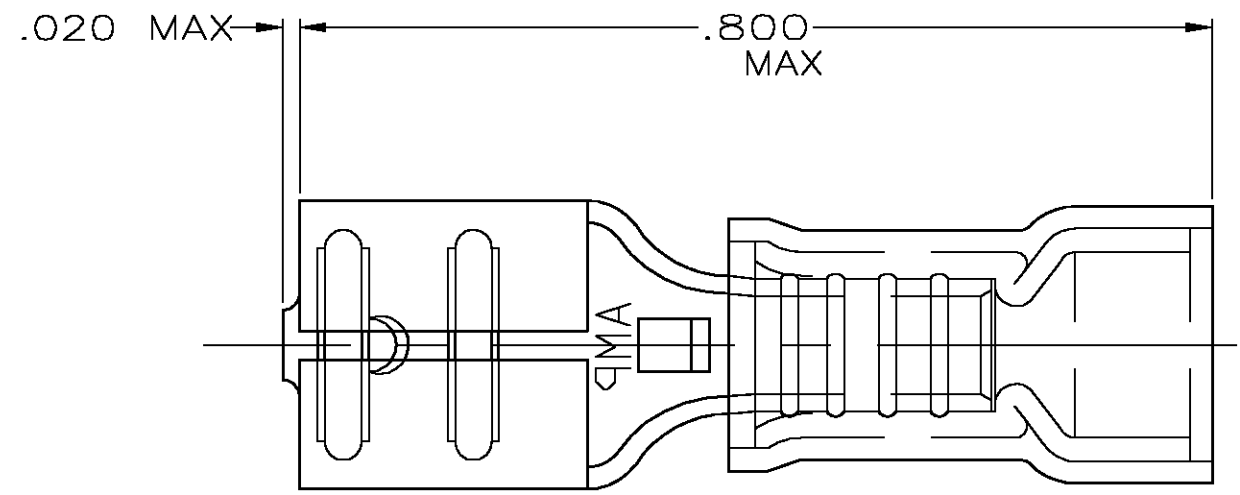


THIS DRAWING IS UNPUBLISHED. RELEASED FOR PUBLICATION  
 © COPYRIGHT BY TYCO ELECTRONICS CORPORATION. ALL RIGHTS RESERVED.

LOC		DIST		REVISIONS			
P	LTR	DESCRIPTION		DATE	DWN	APVD	
	C	REV PER 0G3A-0112-05		16FEB05	JR	TM	



- 1 INSULATION RANGE IS .170 MAX
- 2 FITS TAB .032 THK
- 3 MATERIAL: TERMINAL - BRASS  
SLEEVE: NYLON
- 4 FINISH: TERMINAL - TIN PLATED  
SLEEVE - COLOR BLUE

QTY	SUPPLIED AS	PART NO
4000	TAPE MOUNTED	184235-2
1000	LOOSE PIECE	184235-1

<b>AMP INCORPORATED</b> <b>CUSTOMER SERVICE SYSTEMS</b>		MAX RECOMMENDED OPERATING TEMPERATURE: [105°C] 221° F	THIS DRAWING IS A CONTROLLED DOCUMENT.		DWN L OLMEDA 16JAN96 CHK M ELLIS 16JAN96 APVD B BARE 16JAN96	<b>tyco</b> <b>Electronics</b> Tyco Electronics Corporation Harrisburg, Pa 17105-3608					
FOR ADDITIONAL PRODUCT INFORMATION OR COPIES OF DRAWINGS AND TECHNICAL DOCUMENTS PRODUCT INFORMATION CENTER 1-800-522-6752	FOR APPLICATION TOOLING ASSISTANCE CENTER TOOLING INFORMATION 1-800-722-1111	VOLTAGE RATING: 300V MAX	DIMENSIONS: INCHES	TOLERANCES UNLESS OTHERWISE SPECIFIED: 0 PLC ± - 1 PLC ± - 2 PLC ± .015 3 PLC ± - 4 PLC ± - ANGLES ± -	NAME RECEPTACLE, 187 SERIES, FASTON, PIDG, WIRE SIZE: 16-14		SIZE A3	CAGE CODE 00779	DRAWING NO C-184235	RESTRICTED TO -	
FOR ORDER ENTRY 1-800-526-5142	THIS DRAWING IS A CONTROLLED DOCUMENT FOR AMP INCORPORATED. IT IS SUBJECT TO CHANGE AND THE CONTROLLING ENGINEERING ORGANIZATION SHOULD BE CONTACTED FOR THE LATEST REVISION.		MATERIAL - 3	FINISH - 4	WEIGHT -		CUSTOMER DRAWING		SCALE 6:1	SHEET 1 OF 1	REV C

# Mouser Electronics

Authorized Distributor

Click to View Pricing, Inventory, Delivery & Lifecycle Information:

[TE Connectivity:](#)

[184235-1](#)