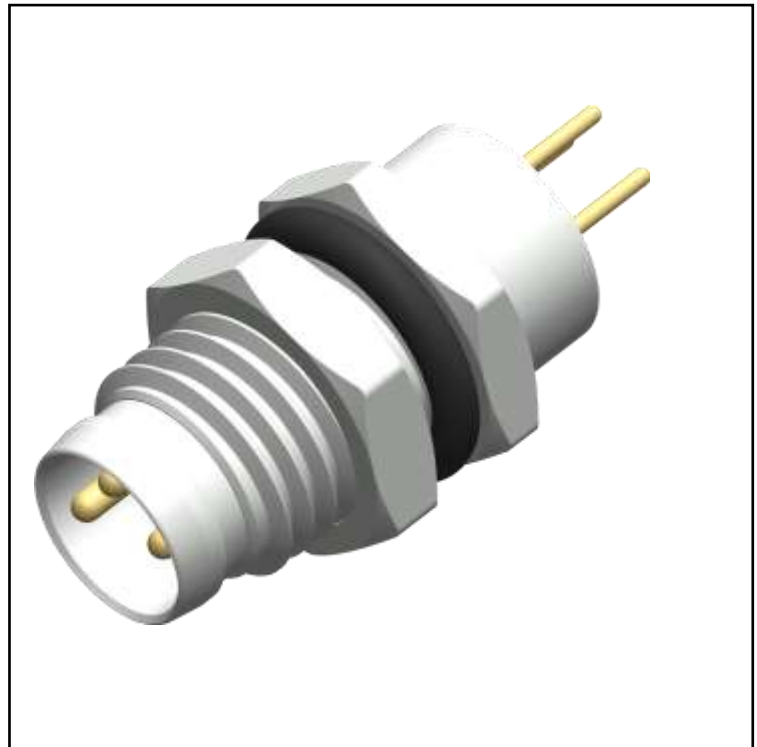


## FEATURES

- Insulation resistance is greater than or equal to 100 MΩ
- Connector size is M8
- Space efficient
- Straight body orientation
- Water resistant

# RS PRO M08 MALE REAR PANEL MOUNT 3 PIN CONNECTOR

RS Stock No.: 2080589



RS Professionally Approved Products bring to you professional quality parts across all product categories. Our product range has been tested by engineers and provides a comparable quality to the leading brands without paying a premium price.

## M08 Panel Mount

This panel mount receptacle is available in M8 or M12 and features a threaded connector for secure mating attenuation with corresponding M8 or M12 plugs. When mated, this connection is sealed to IP67, providing excellent protection against dust and water and resulting in a connector that is well suited for industrial purposes.

Panel mount connector is available in contact configurations of 3 & 4 pole and in male and female variants.

### Features and Benefits:

- Connector size is M8
- Insulation Resistance  $\geq 100 \text{ M}\Omega$
- Dust protected
- Straight body orientation
- Water resistant

### General Specifications

Rated Operational Voltage	60 V
Current Rating	3A
Insulation Resistance	$\geq 100 \text{ M}\Omega$
Temperature Range	-25°C ... +75°C
Coding	A-Coded
Mounting	Rear (M8 x 1)

### Material Specifications

Housing Material	Brass Ni Plated
Contact	Cu-Zn
Contact Plating	Gold Flash
Contact Carrier	Nylon 66
O-Ring	Neoprene
Pole	3
Clamp Nut	M8 x 1

### Protection Category

Degree of Protection	IP67
----------------------	------

### Additional Information

<b>Custom Tariff Number</b>	85369090
-----------------------------	----------

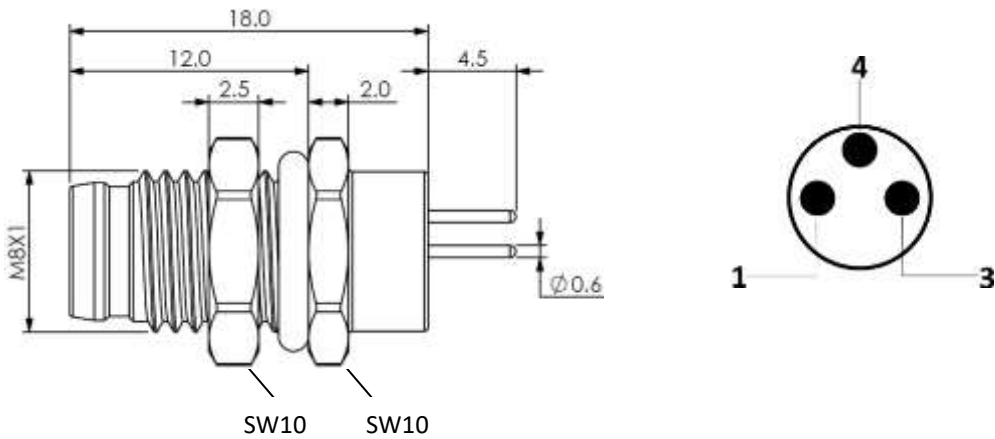
## Approvals

<b>Standards Met</b>	IEC 61076-2-104
----------------------	-----------------

## Similar Products

Stock No.	Brand	Product Name	Attribute 1	Attribute 2
xxx-xxxx	RS PRO	RS Pro M08 Panel PCB Mount 4 Pin Connector	M08 PCB Mount Bulk Head Connector	M08 Receptacles

### Connection Diagrams / Assembly Diagrams / Illustrations / Accessories



All Dimensions are in mm.