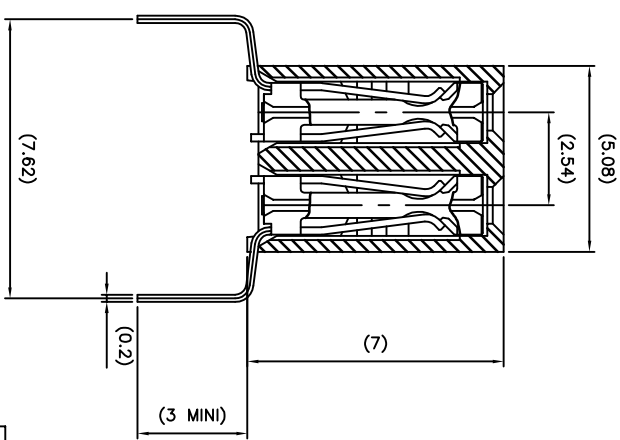
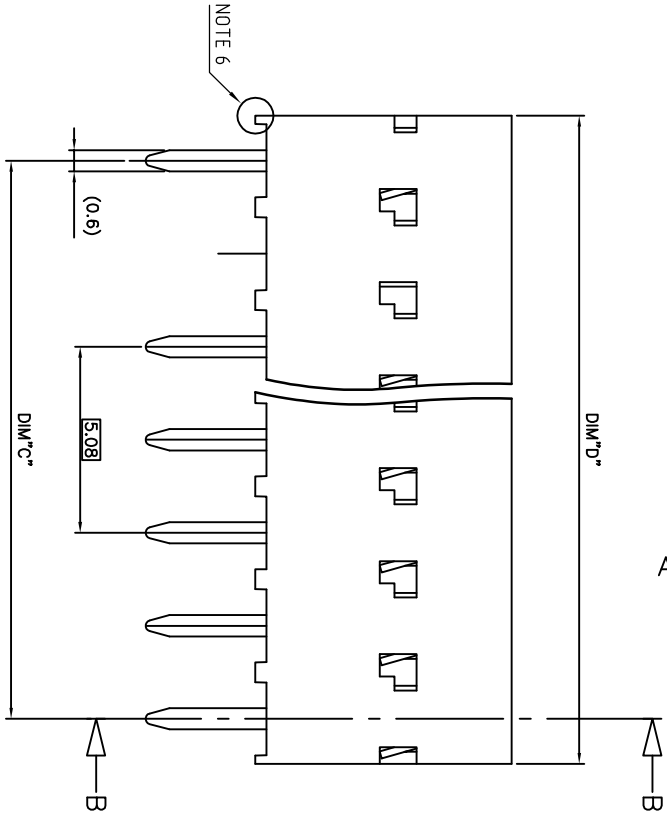
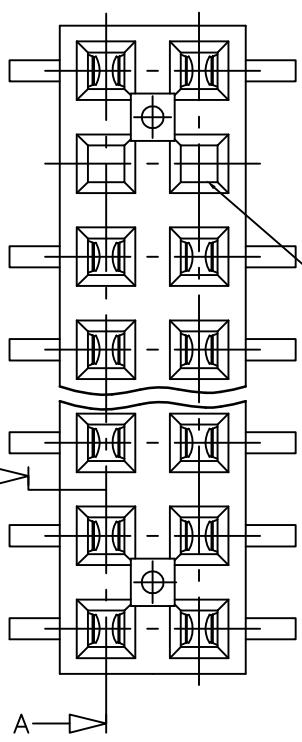


PRODUCT NB	DIM"C" & DIM"D"
95264-YYY(H)(LF)	SEE SHEET 2/2

WHEN NEEDED, SUFFIX LETTER "LF" INDICATES THE PRODUCT IS ROHS COMPATIBLE. SEE NOTE 5



NOTES:

- 1 - MATERIAL HOUSING: THERMOPLASTIC POLYESTER, 30% GLASS FILLED, COLOUR BLUE. FLAME RETARDANT PER UL-94 CATEGORY VO.
- 2 - MATERIAL TERMINAL: PHOSPHOR BRONZE EXTRA HARD.
- 3 - MATERIAL HOUSING VERSION HIGH TEMPERATURE: PCT 30% GLASS FILLED, COLOUR GREY. FLAME RETARDANT PER UL-94 CATEGORY VO.
- 4 - THE DASH "H" AT THE END OF THE P/N TO INDICATE A HIGH TEMPERATURE HOUSING.
- 5 - ROHS COMPATIBLE PRODUCT SPECIFICATIONS
- 6 - PLATING:
 - "LF" MEANS THE PRODUCT IS LEAD-FREE, 2µm MINIMUM MATTE TIN OVER 1.27µm MINIMUM NICKEL UNDERPLATE.
- 7 - MANUFACTURING PROCESS COMPATIBILITY
 - THE HOUSING WILL WITHSTAND EXPOSURE TO 260°C ±5°C SOLDER BATH TEMPERATURE FOR 5 SECONDS IN A WAVE SOLDER APPLICATION WITH A 1.6mm MIN THICK CIRCUIT BOARD.
- 8 - LABELING:
 - MEETS PACKAGING SPECS AS PER GS-14-920
- 9 - LEGAL STATEMENT: SEE GS-22-008
- 10 - END STAND-OFFS FOR 2x2 UP TO 2x6 POS NO END STAND-OFFS FOR 2x6 UP TO 2x50 POS

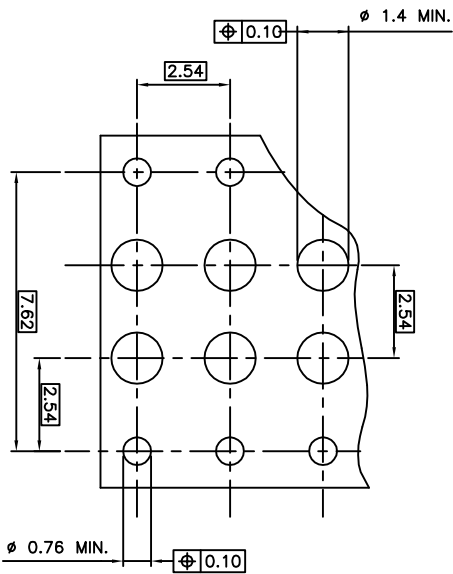
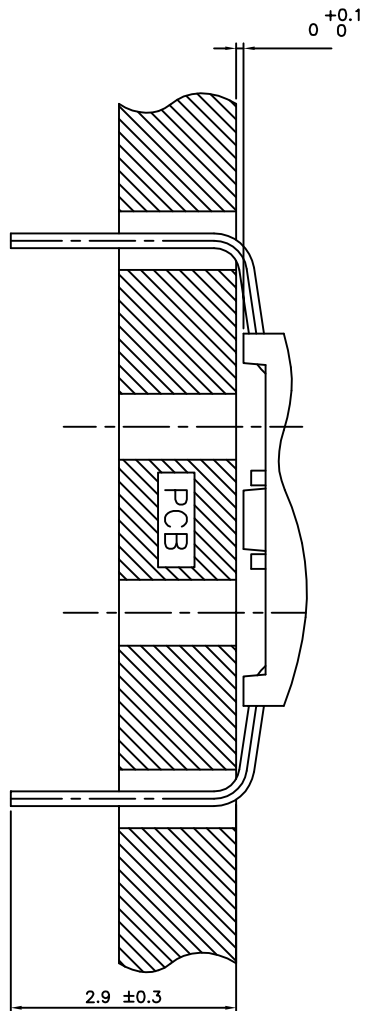
SECTION A-A

(SEE NOTE 4)

SECTION B-B

mat'l. code	SEE NOTES	surface	tolerance	projection	product family		
Utr	ecn no	dr	date	ISO 192	ISO 150	ISO 101	title
H	F80638	VM0	98.10.14	reference	surface	specified	SPREADED LEGS
J	F20161	DLE	02.02.25	angle	±0.3	mm	300 SELECT. LOADED
K	F04-0347	DLE	04.11.15	±Z		mm	scale 10:1
L	F08-0137	DLE	06.02.27	dr	O. MATHERON	98.06.07	chg no
M	F08-0204	DLE	06.06.28	enfr	JM.PHAMMANI	98.06.07	sheet 1 of 2 size
N	F08-0323	DLE	06.11.21	chr	P.NIZZI	98.06.07	A2
P	F11-0043	COO	11.02.22	pprd	JMP	98.06.07	sheet
revision	P	H					type
sheet	1	2					CUSTOMER Drawing
index							

PRODUCT N°	NB of POS.	DIM"C"	DIM"D"	CONTACT PLACED IN CAVITY (SEE VIEW "A")																			
				1	2	3	4	5	6	7	8	9	10	11	12	13	14	15	16	17	18	19	20
95264-Y01(H)(LF)	2x10	22.86	25.32	X	X	X	X	X	X	X	X	X	X	X	X	X	X	X	X	X	X	X	
95264-Y02(H)(LF)	2x15	35.56	38.02	X	X	X	X	X	X	X	X	X	X	X	X	X	X	X	X	X	X	X	
95264-Y03(H)(LF)	2x11	35.56	38.02	X	X	X	X	X	X	X	X	X	X	X	X	X	X	X	X	X	X	X	
95264-Y04(H)(LF)	2x10	22.86	25.32	X	X	X	X	X	X	X	X	X	X	X	X	X	X	X	X	X	X	X	
95264-Y05(H)(LF)	2x4	7.62	10.08	X	X	X	X	X	X	X	X	X	X	X	X	X	X	X	X	X	X	X	
95264-Y06(H)(LF)	2x5	10.16	12.62	X	X	X	X	X	X	X	X	X	X	X	X	X	X	X	X	X	X	X	
95264-Y07(H)(LF)	2x3	5.08	7.54	X	X	X	X	X	X	X	X	X	X	X	X	X	X	X	X	X	X	X	
95264-Y08(H)(LF)	2x7	15.24	17.7	X	X	X	X	X	X	X	X	X	X	X	X	X	X	X	X	X	X	X	
95264-Y09(H)(LF)	2x14	33.02	35.48	X	X	X	X	X	X	X	X	X	X	X	X	X	X	X	X	X	X	X	
95264-Y10(H)(LF)	2x20	48.26	50.72	X	X	X	X	X	X	X	X	X	X	X	X	X	X	X	X	X	X	X	



95264-6XX(H)	2µm Au MIN. OVER 1.3µm Ni MIN.	SnPb OVER Ni	95264-6XX(H)LF	2µm Au MIN. OVER 1.3µm Ni MIN.	Sn OVER Ni
95264-8XX(H)	0.4µm Au MIN. OVER 1.3µm Ni MIN.	SnPb OVER Ni	95264-8XX(H)LF	0.4µm Au MIN. OVER 1.3µm Ni MIN.	Sn OVER Ni
95264-4XX(H)	5µm SnPb MIN. OVER 0.1µm Ni MIN.	SnPb OVER Ni	95264-4XX(H)LF	5µm Sn MIN. OVER 1.27µm Ni MIN.	Sn OVER Ni
95264-3XX(H)	0.75µm Au MIN. OVER 1.3µm Ni MIN.	SnPb OVER Ni	95264-3XX(H)LF	0.75µm Au MIN. OVER 1.3µm Ni MIN.	Sn OVER Ni
PLATING CODE	CONTACT AREA	SOLDER TAIL	PLATING CODE	CONTACT AREA	SOLDER TAIL
PLATING EXPLANATION					

CUSTOMER COPY FOR REFERENCE ONLY					
mat'l. code	SEE NOTES	surface finish	tolerance	projection	product family
Utr. egn. no.	dr. date	ISO 1912	ISO 418	ISO W1	DX VCC DR
H. Rev.	02/04/04	values unless otherwise specified	±0.3	mm.	
C. F70103	JMC 97.01.10	angle	mm.	scale 10:1	
D. F70029	PNZ 97.09.25	lineart	mm.	scale 10:1	
E. F80038	VMQ 98.10.14	P. NZZI	mm.	scale 10:1	
F. F20161	DEE 02.02.25	P. NZZI	mm.	scale 10:1	
G. Rev.	03/27/04	OK.1.1.15	mm.	scale 10:1	
sheet	revision	JMP	mm.	scale 10:1	
index	sheet		mm.	scale 10:1	

PDM: Rev:P STATUS: Released Printed: Mar 20, 2012