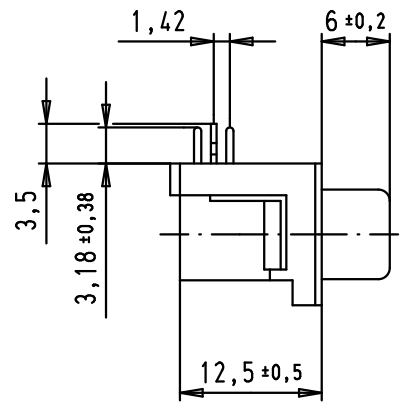
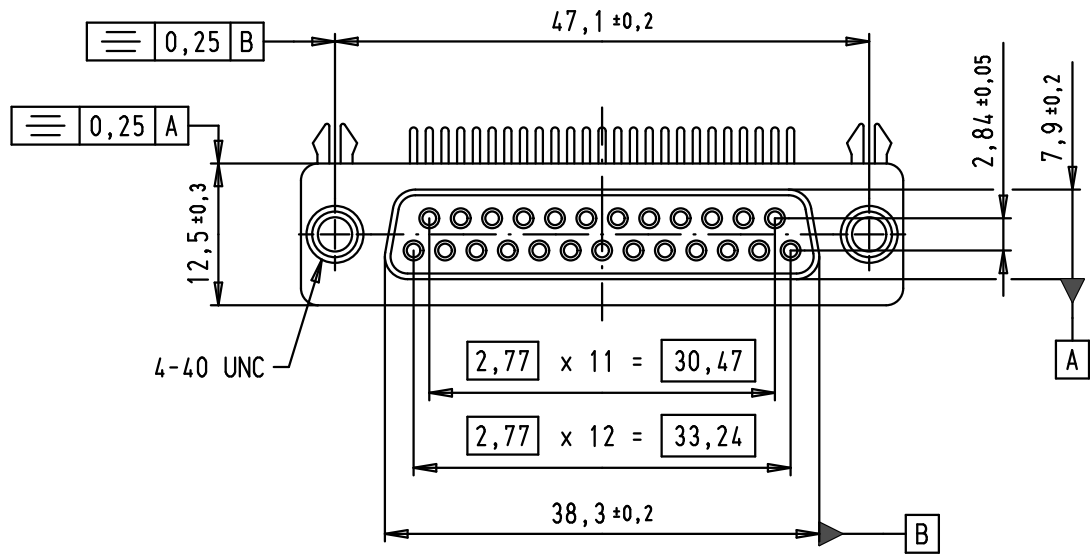


5 4 3 2 1

D  
C  
B  
A

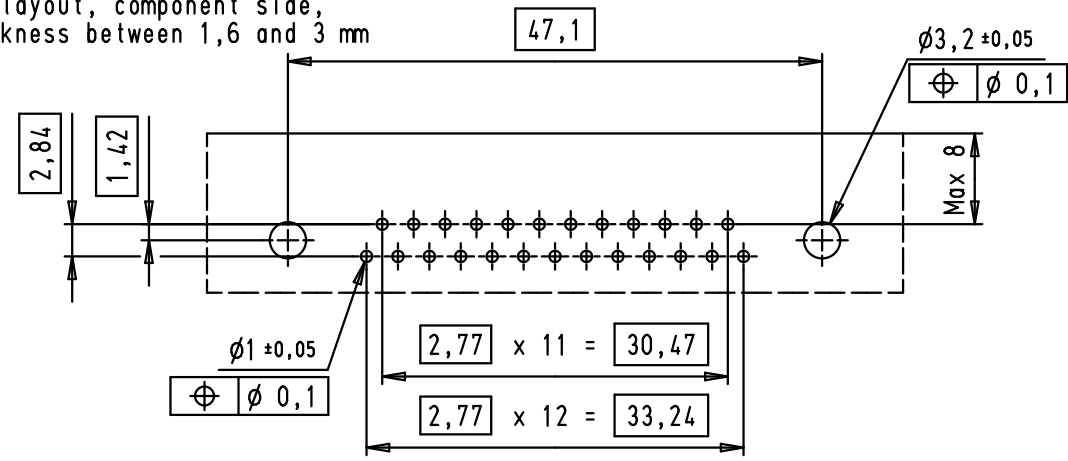
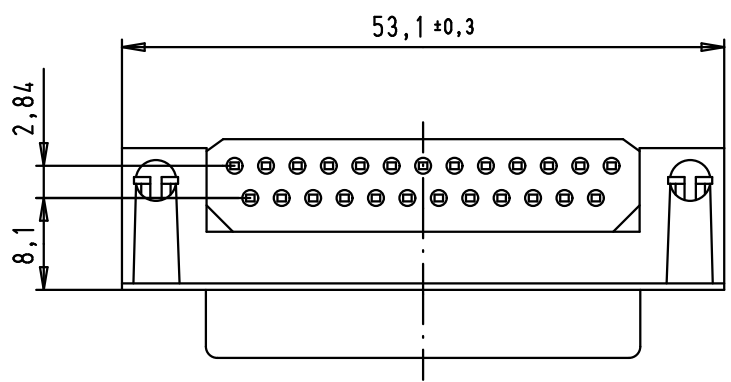
SPECIFICATIONS

FREQUENCY (MHz)	ATTENUATION (dB)
5	1
10	2
50	4
100	4,5
500	4,5
1000	4,5





Operating voltage < 250 V AC  
 Working current < 7,5 A  
 Insulation resistance > 1GΩ  
 Contact resistance < 15 mΩ  
 Dielectric withstanding voltage 500 V AC / minute

PCB layout, component side, thickness between 1,6 and 3 mm



09 64 313 7802	Au Flash
Part number	Performance level

				Dot.	Name	 All Dim. in mm Orig. Size DIN A 4
				Detail.	02/07/09 PK	
				Insp.		
				Stand.		
EC00362	02/07/09	PK	HARTING EURL F-95972 Paris			
Mod.	Dot.	Name				

D-Sub, female, angled, US footprint, 25 poles, tin plated shell, solder pins, ferrite filter	Maßstab/ Scale 1,5:1
TB 09 64 313 7802	Blatt/ Page 1 / 1
Sub.	