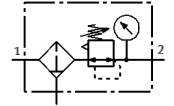
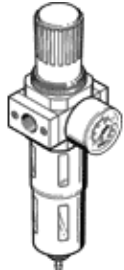


# filter regulator LFR-3/4-D-MIDI

Part number: 162683  
Classic

FESTO

With metal bowl guard and pressure gauge. With manual condensate drain.  
Modern alternatives can be found by entering the first four characters of the type code in the search field.



## Data sheet

| Feature                                 | Value   |
|---|---|
| Size                                    | Midi  |
| Series                                  | D   |
| Actuator lock                           | Rotary knob with lock   |
| Assembly position                       | Vertical +/- 5°   |
| Grade of filtration                     | 40 µm   |
| Condensate drain                        | manual rotary   |
| Design structure                        | Filter regulator with pressure gauge  |
| Max. condensate volume                  | 43 cm <sup>3</sup>  |
| Bowl guard                              | Metal bowl guard  |
| Pressure gauge                          | with pressure gauge   |
| Operating pressure                      | 1 ... 16 bar  |
| Pressure regulation range               | 0.5 ... 12 bar  |
| Max. pressure hysteresis                | 0.2 bar   |
| Standard nominal flow rate              | 3,400 l/min   |
| Maritime classification                 | see certificate   |
| Operating medium                        | Compressed air to ISO 8573-1:2010 [:-9:-]<br>Inert gases                    |
| Note on operating and pilot medium      | Lubricated operation possible (subsequently required for further operation) |
| Corrosion resistance classification CRC | 2 - Moderate corrosion stress   |
| Storage temperature                     | -10 ... 60 °C   |
| Air purity class at output              | Compressed air in accordance with ISO8573-1:2010 [7:8:4]<br>Inert gases     |
| Medium temperature                      | -10 ... 60 °C   |
| Ambient temperature                     | -10 ... 60 °C   |
| Product weight                          | 920 g   |
| Mounting type                           | Optional<br>Line installation<br>with accessories                           |
| Pneumatic connection, port 1            | G3/4  |
| Pneumatic connection, port 2            | G3/4  |
| Materials note                          | Conforms to RoHS  |
| Material housing                        | Zinc die-casting  |
| Material bowl                           | PC  |