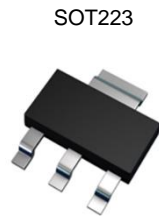
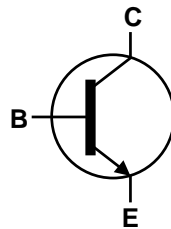


Features

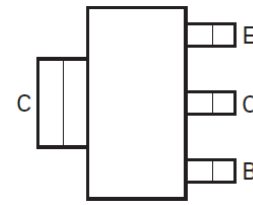
- $BV_{CE0} > 45V, 60V \& 80V$
- $I_C = 1A$ High Continuous Collector Current
- $I_{CM} = 2A$ Peak Pulse Current
- 2W Power Dissipation
- Low Saturation Voltage $V_{CE(sat)} < 500mV @ 0.5A$
- Gain Groups 10 and 16
- Complementary PNP Types: BCP51, 52 and 53
- **Totally Lead-Free & Fully RoHS Compliant (Notes 1 & 2)**
- **Halogen and Antimony Free. "Green" Device (Note 3)**
- **Qualified to AEC-Q101 Standards for High Reliability**
- **PPAP Capable (Note 4)**



Top View



Device Symbol


 Top View
Pin-Out

Mechanical Data

- Case: SOT223
- Case Material: Molded Plastic. "Green" Molding Compound; UL Flammability Rating 94V-0
- Moisture Sensitivity: Level 1 per J-STD-020
- Terminals: Finish - Matte Tin Plated Leads. Solderable per MIL-STD-202, Method 208
- Weight: 0.112 grams (Approximate) (e3)

Applications

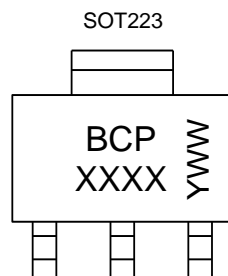
- Medium Power Switching or Amplification Applications
- AF Driver and Output Stages

Ordering Information (Notes 4 & 5)

| Product | Compliance | Marking | Reel size (inches) | Tape width (mm) | Quantity per reel |
|------------|------------|--|--------------------|-----------------|-------------------|
| BCP54TA | AEC-Q101 | BCP 54 | 7 | 12 | 1,000 |
| BCP5410TA | AEC-Q101 | BCP 5410 | 7 | 12 | 1,000 |
| BCP5416TA | AEC-Q101 | BCP 5416 | 7 | 12 | 1,000 |
| BCP5416QTA | Automotive | BCP 5416 | 7 | 12 | 1,000 |
| BCP55TA | AEC-Q101 | BCP 55 | 7 | 12 | 1,000 |
| BCP5510TA | AEC-Q101 | BCP 5510 | 7 | 12 | 1,000 |
| BCP5516TA | AEC-Q101 | BCP 5516 | 7 | 12 | 1,000 |
| BCP56TA | AEC-Q101 | BCP 56 | 7 | 12 | 1,000 |
| BCP5610TA | AEC-Q101 | BCP 5610 | 7 | 12 | 1,000 |
| BCP5616TA | AEC-Q101 | BCP 5616 | 7 | 12 | 1,000 |
| BCP5616TC | AEC-Q101 | BCP 5616 | 13 | 12 | 4,000 |
| BCP5616QTA | Automotive | Refer to http://diodes.com/datasheets/BCP5616Q.pdf | | | |
| BCP5616QTC | Automotive | Refer to http://diodes.com/datasheets/BCP5616Q.pdf | | | |

- Notes:
1. No purposely added lead. Fully EU Directive 2002/95/EC (RoHS) & 2011/65/EU (RoHS 2) compliant.
 2. See http://www.diodes.com/quality/lead_free.html for more information about Diodes Incorporated's definitions of Halogen- and Antimony-free, "Green" and Lead-free.
 3. Halogen- and Antimony-free "Green" products are defined as those which contain <900ppm bromine, <900ppm chlorine (<1500ppm total Br + Cl) and <1000ppm antimony compounds.
 4. Automotive products are AEC-Q101 qualified and are PPAP capable. Automotive, AEC-Q101 and standard products are electrically and thermally the same, except where specified. For more information, please refer to http://www.diodes.com/quality/product_compliance_definitions/.
 5. For packaging details, go to our website at <http://www.diodes.com/products/packages.html>.

Marking Information



BCP = Product Type Marking Code, Line 1
XXXX = Product Type Marking Code, Line 2 as follows:

| | | |
|----------------|----------------|----------------|
| BCP54 = 54 | BCP55 = 55 | BCP56 = 56 |
| BCP5410 = 5410 | BCP5510 = 5510 | BCP5610 = 5610 |
| BCP5416 = 5416 | BCP5516 = 5516 | BCP5616 = 5616 |

YWW = Date Code Marking
Y or \bar{Y} = Last Digit of Year (ex: 5= 2015)
WW or $\bar{W}W$ = Week Code (01~53)

Absolute Maximum Ratings (@T_A = +25°C, unless otherwise specified.)

| Characteristic | Symbol | BCP54 | BCP55 | BCP56 | Unit |
|------------------------------|------------------|-------|-------|-------|------|
| Collector-Base Voltage | V _{CBO} | 45 | 60 | 100 | V |
| Collector-Emitter Voltage | V _{CEO} | 45 | 60 | 80 | V |
| Emitter-Base Voltage | V _{EBO} | 5 | | | V |
| Continuous Collector Current | I _C | 1 | | | A |
| Peak Pulse Collector Current | I _{CM} | 2 | | | |
| Continuous Base Current | I _B | 100 | | | mA |
| Peak Pulse Base Current | I _{BM} | 200 | | | |

Thermal Characteristics (@T_A = +25°C, unless otherwise specified.)

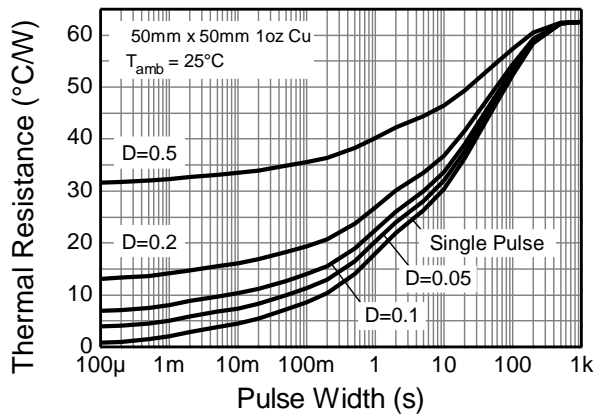
| Characteristic | Symbol | Value | Unit |
|---|-----------------------------------|-------------|------|
| Power Dissipation | (Note 6) P _D | 2 | W |
| Thermal Resistance, Junction to Ambient | (Note 6) R _{θJA} | 62 | °C/W |
| Thermal Resistance, Junction to Leads | (Note 7) R _{θJL} | 19.4 | °C/W |
| Operating and Storage Temperature Range | T _J , T _{STG} | -65 to +150 | °C |

ESD Ratings (Note 8)

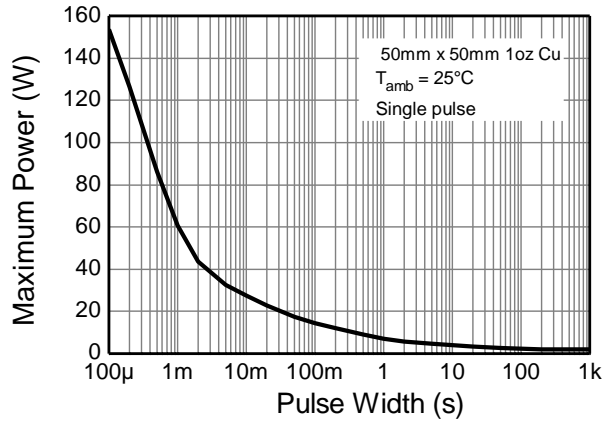
| Characteristic | Symbol | Value | Unit | JEDEC Class |
|--|---------|-------|------|-------------|
| Electrostatic Discharge - Human Body Model | ESD HBM | 4,000 | V | 3A |
| Electrostatic Discharge - Machine Model | ESD MM | 400 | V | C |

- Notes:
6. For a device mounted with the collector lead on 50mm x 50mm 1oz copper that is on a single-sided 1.6mm FR4 PCB; device is measured under still air conditions whilst operating in steady-state.
 7. Thermal resistance from junction to solder-point (at the end of the collector lead).
 8. Refer to JEDEC specification JESD22-A114 and JESD22-A115.

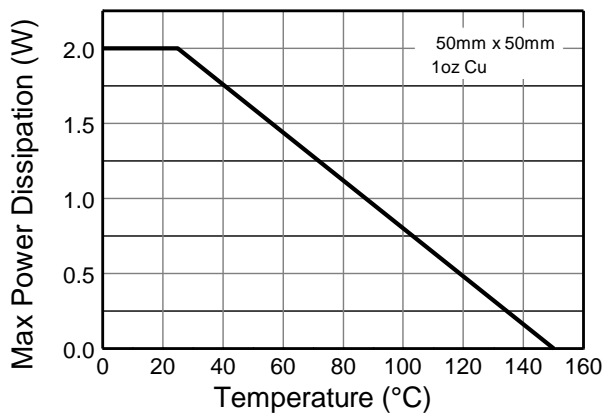
Thermal Characteristics and Derating Information



Transient Thermal Impedance



Pulse Power Dissipation



Derating Curve

Electrical Characteristics (@T_A = +25°C, unless otherwise specified.)

| Characteristic | | Symbol | Min | Typ | Max | Unit | Test Condition |
|--|--|----------------------|-----|-----|-----------|------|--|
| Collector-Base Breakdown Voltage | BCP54 | BV _{CBO} | 45 | - | - | V | I _C = 100μA |
| | BCP55 | | 60 | | | | |
| | BCP56 | | 100 | | | | |
| Collector-Emitter Breakdown Voltage (Note 9) | BCP54 | BV _{CEO} | 45 | - | - | V | I _C = 10mA |
| | BCP55 | | 60 | | | | |
| | BCP56 | | 80 | | | | |
| Emitter-Base Breakdown Voltage | | BV _{EBO} | 5 | - | - | V | I _E = 10μA |
| Collector Cut-Off Current | | I _{CBO} | - | - | 0.1 20 | μA | V _{CB} = 30V V _{CB} = 30V, T _A = +150°C |
| Emitter Cut-Off Current | | I _{EBO} | - | - | 20 | nA | V _{EB} = 4V |
| Static Forward Current Transfer Ratio (Note 9) | All versions 10 gain grp 16 gain grp | h _{FE} | 25 | - | - | - | I _C = 5mA, V _{CE} = 2V I _C = 150mA, V _{CE} = 2V I _C = 500mA, V _{CE} = 2V I _C = 150mA, V _{CE} = 2V I _C = 150mA, V _{CE} = 2V |
| | | | 40 | - | 250 | | |
| | | | 25 | - | - | | |
| | | | 63 | - | 160 | | |
| | | | 100 | - | 250 | | |
| Collector-Emitter Saturation Voltage (Note 9) | | V _{CE(sat)} | - | - | 0.5 | V | I _C = 500mA, I _B = 50mA |
| Base-Emitter Turn-On Voltage (Note 9) | | V _{BE(on)} | - | - | 1.0 | V | I _C = 500mA, V _{CE} = 2V |
| Transition Frequency | | f _t | 150 | - | - | MHz | I _C = 50mA, V _{CE} = 10V f = 100MHz |
| Output Capacitance | | C _{obo} | - | - | 25 | pF | V _{CB} = 10V, f = 1MHz |

Note: 9. Measured under pulsed conditions. Pulse width ≤ 300μs. Duty cycle ≤ 2%.

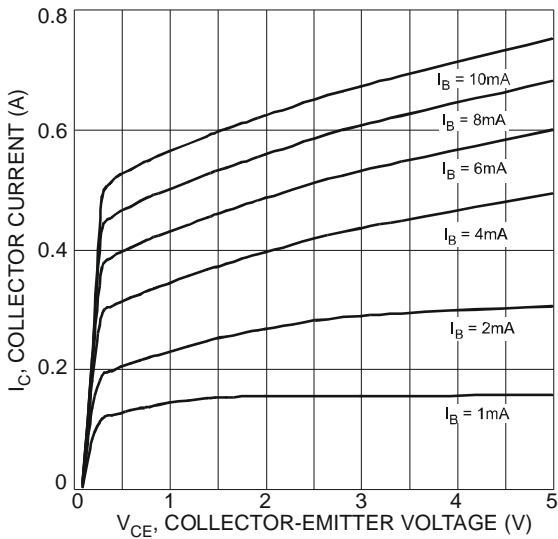


Fig. 1 Typical Collector Current vs. Collector-Emitter Voltage

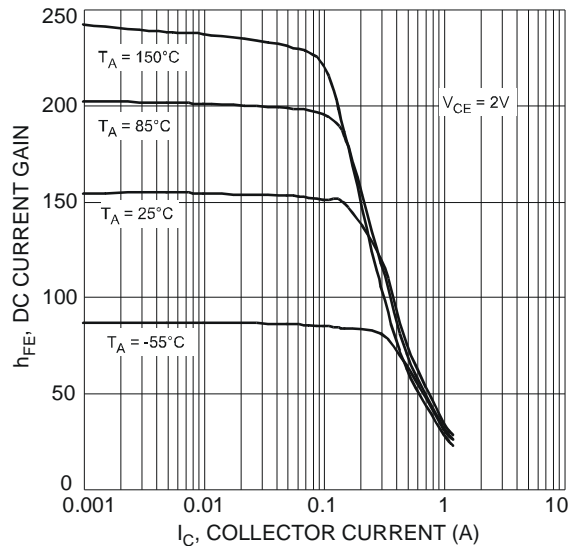


Fig. 2 Typical DC Current Gain vs. Collector Current

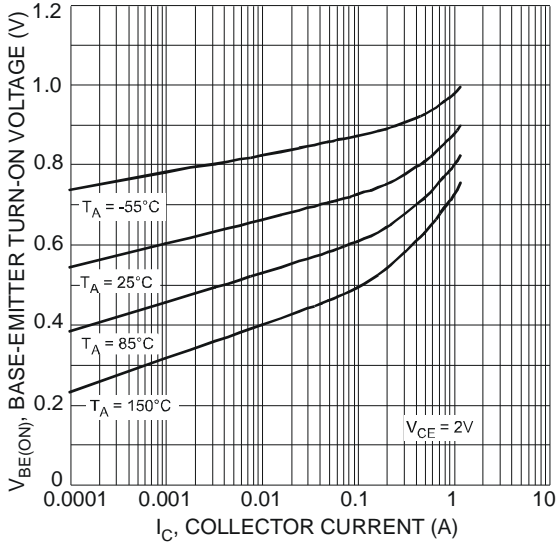


Fig. 3 Typical Base-Emitter Turn-On Voltage vs. Collector Current

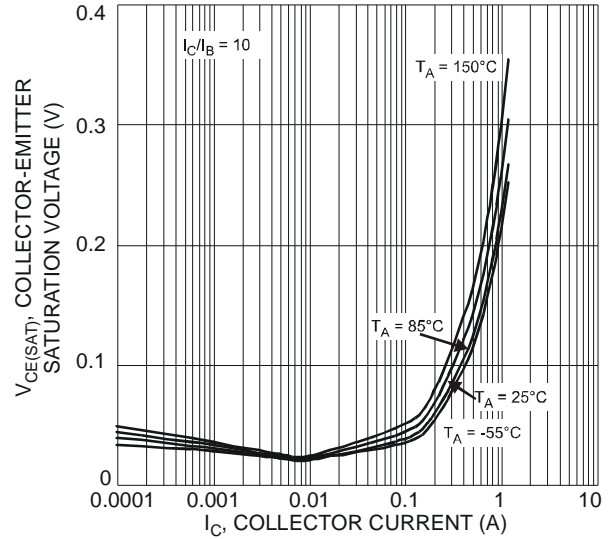


Fig. 4 Typical Collector-Emitter Saturation Voltage vs. Collector Current

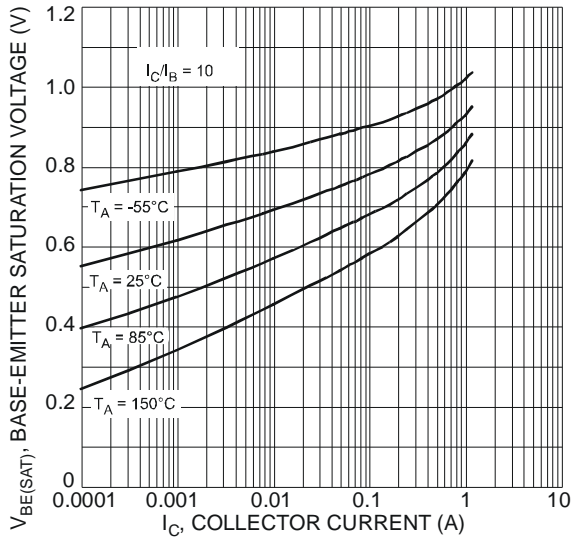


Fig. 5 Typical Base-Emitter Saturation Voltage vs. Collector Current

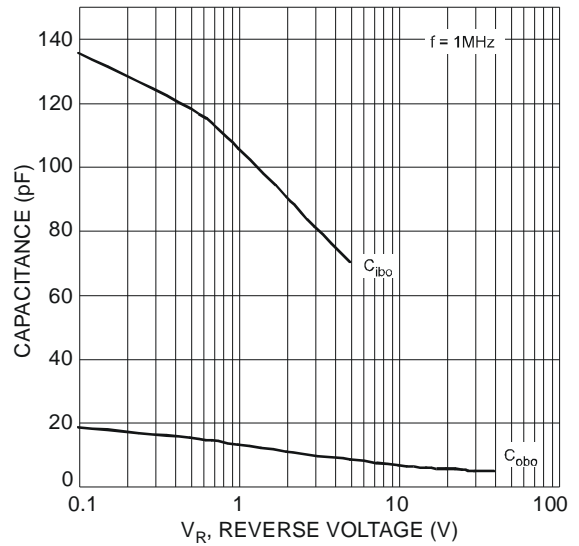


Fig. 6 Typical Capacitance Characteristics

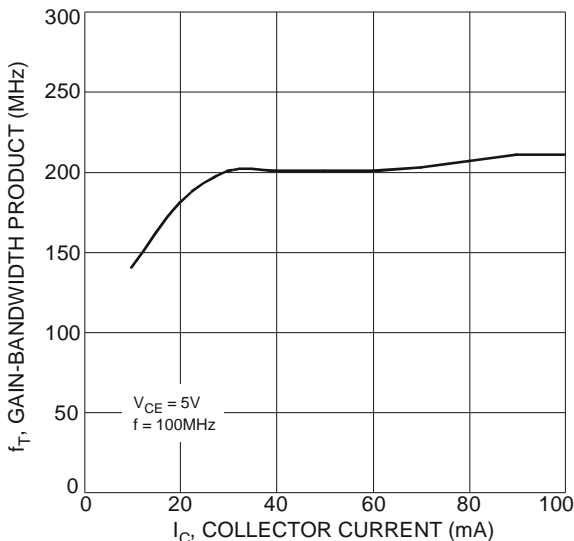
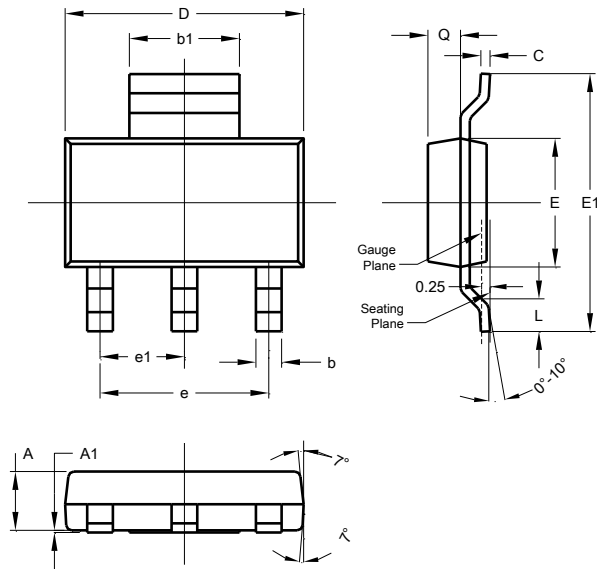


Fig. 7 Typical Gain-Bandwidth Product vs. Collector Current

Package Outline Dimensions

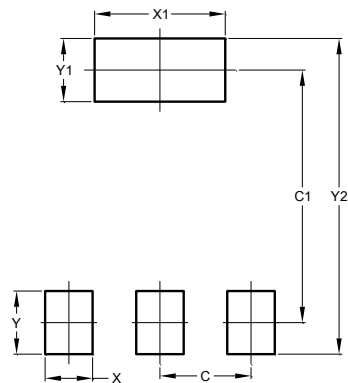
Please see AP02002 at <http://www.diodes.com/datasheets/ap02002.pdf> for the latest version.



| SOT223 | | | |
|----------------------|-------|------|------|
| Dim | Min | Max | Typ |
| A | 1.55 | 1.65 | 1.60 |
| A1 | 0.010 | 0.15 | 0.05 |
| b | 0.60 | 0.80 | 0.70 |
| b1 | 2.90 | 3.10 | 3.00 |
| C | 0.20 | 0.30 | 0.25 |
| D | 6.45 | 6.55 | 6.50 |
| E | 3.45 | 3.55 | 3.50 |
| E1 | 6.90 | 7.10 | 7.00 |
| e | - | - | 4.60 |
| e1 | - | - | 2.30 |
| L | 0.85 | 1.05 | 0.95 |
| Q | 0.84 | 0.94 | 0.89 |
| All Dimensions in mm | | | |

Suggested Pad Layout

Please see AP02001 at <http://www.diodes.com/datasheets/ap02001.pdf> for the latest version.



| Dimensions | Value (in mm) |
|------------|---------------|
| C | 2.30 |
| C1 | 6.40 |
| X | 1.20 |
| X1 | 3.30 |
| Y | 1.60 |
| Y1 | 1.60 |
| Y2 | 8.00 |

IMPORTANT NOTICE

DIODES INCORPORATED MAKES NO WARRANTY OF ANY KIND, EXPRESS OR IMPLIED, WITH REGARDS TO THIS DOCUMENT, INCLUDING, BUT NOT LIMITED TO, THE IMPLIED WARRANTIES OF MERCHANTABILITY AND FITNESS FOR A PARTICULAR PURPOSE (AND THEIR EQUIVALENTS UNDER THE LAWS OF ANY JURISDICTION).

Diodes Incorporated and its subsidiaries reserve the right to make modifications, enhancements, improvements, corrections or other changes without further notice to this document and any product described herein. Diodes Incorporated does not assume any liability arising out of the application or use of this document or any product described herein; neither does Diodes Incorporated convey any license under its patent or trademark rights, nor the rights of others. Any Customer or user of this document or products described herein in such applications shall assume all risks of such use and will agree to hold Diodes Incorporated and all the companies whose products are represented on Diodes Incorporated website, harmless against all damages.

Diodes Incorporated does not warrant or accept any liability whatsoever in respect of any products purchased through unauthorized sales channel. Should Customers purchase or use Diodes Incorporated products for any unintended or unauthorized application, Customers shall indemnify and hold Diodes Incorporated and its representatives harmless against all claims, damages, expenses, and attorney fees arising out of, directly or indirectly, any claim of personal injury or death associated with such unintended or unauthorized application.

Products described herein may be covered by one or more United States, international or foreign patents pending. Product names and markings noted herein may also be covered by one or more United States, international or foreign trademarks.

This document is written in English but may be translated into multiple languages for reference. Only the English version of this document is the final and determinative format released by Diodes Incorporated.

LIFE SUPPORT

Diodes Incorporated products are specifically not authorized for use as critical components in life support devices or systems without the express written approval of the Chief Executive Officer of Diodes Incorporated. As used herein:

A. Life support devices or systems are devices or systems which:

1. are intended to implant into the body, or
2. support or sustain life and whose failure to perform when properly used in accordance with instructions for use provided in the labeling can be reasonably expected to result in significant injury to the user.

B. A critical component is any component in a life support device or system whose failure to perform can be reasonably expected to cause the failure of the life support device or to affect its safety or effectiveness.

Customers represent that they have all necessary expertise in the safety and regulatory ramifications of their life support devices or systems, and acknowledge and agree that they are solely responsible for all legal, regulatory and safety-related requirements concerning their products and any use of Diodes Incorporated products in such safety-critical, life support devices or systems, notwithstanding any devices- or systems-related information or support that may be provided by Diodes Incorporated. Further, Customers must fully indemnify Diodes Incorporated and its representatives against any damages arising out of the use of Diodes Incorporated products in such safety-critical, life support devices or systems.

Copyright © 2015, Diodes Incorporated

www.diodes.com

Mouser Electronics

Authorized Distributor

Click to View Pricing, Inventory, Delivery & Lifecycle Information:

[Diodes Incorporated:](#)

[BCP5410TA](#) [BCP5416TA](#) [BCP54TA](#) [BCP5516TA](#) [BCP5610TA](#) [BCP5616TA](#)