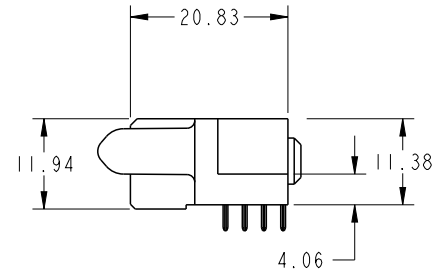
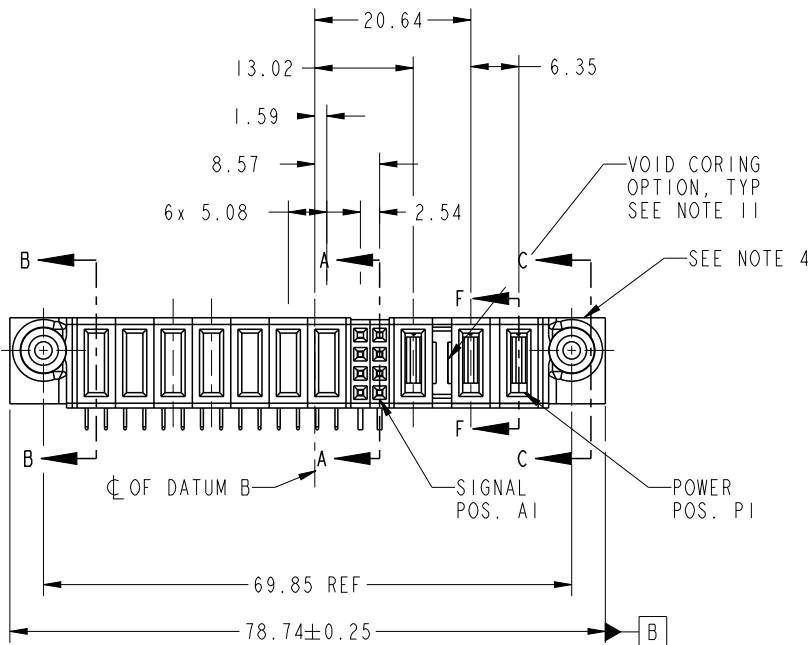


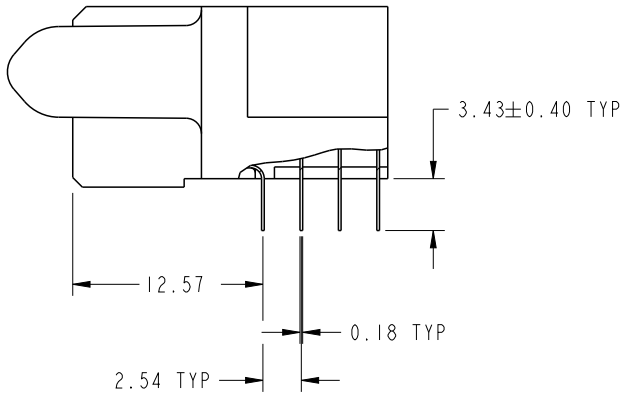
PRODUCT NO.	ROWS	POWER				SIGNAL				POWER					
		E2	P10	P9	P8	P7	P6	P5	P4	2	1	P3	P2	P1	E1
51921-019LF	D C B A		PA	PA	PA	PC	PC	PC	PA	H G F E	H G F E	PG	PH	PH	



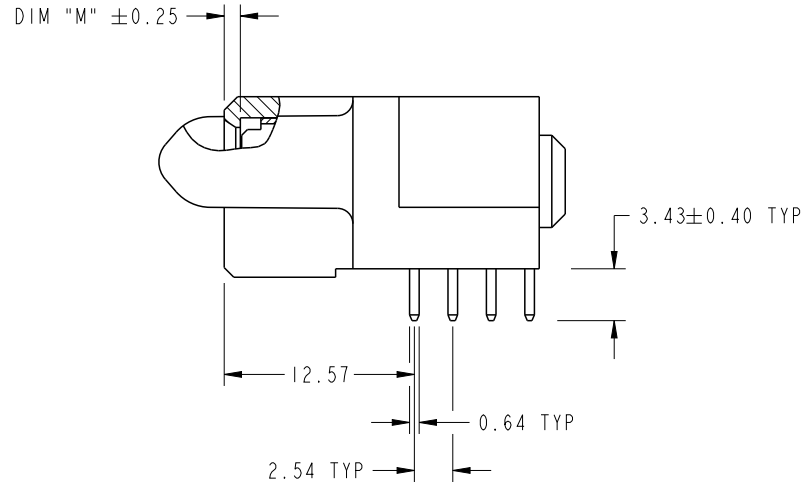
CODE	DIM "M" MATING LENGTH	CONTACT TYPE
PA	[1.07]	POWER
PC	[2.34]	POWER
H	[N/A]	SIGNAL
G	[N/A]	SIGNAL
F	[N/A]	SIGNAL
E	[N/A]	SIGNAL
PH	[2.34]	POWER
PG	[1.07]	POWER

spec ref	SEE NOTES	dr	Leborn Luo	2019/04/03	projection 	MM ←→	size	A4	scale	1:1
tolerance std	TOLERANCES UNLESS OTHERWISE SPECIFIED	eng	Leborn Luo	2019/04/15			ecn no	-		
ISO 406		chr	Rainbow Zhan	2019/04/15						
ISO 1101		appr	Zheng, Pei-Min	2019/04/15	product family	PwrBlade	rel level	Released		
surface	linear	0.X	±0.50	Amphenol FCi	part no	2P+1ACP+8S+7P	dwg no	51921-019	rev	A
		0.XX	±0.25							
		0.XXX	±0.100							
ISO 1302	angular	0°	±2°	cat. no.	Product - Customer Drw		sheet 1 of 4			

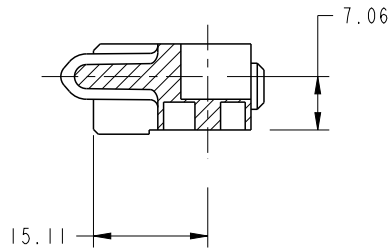
PRODUCT NUMBER  
51921-019LF



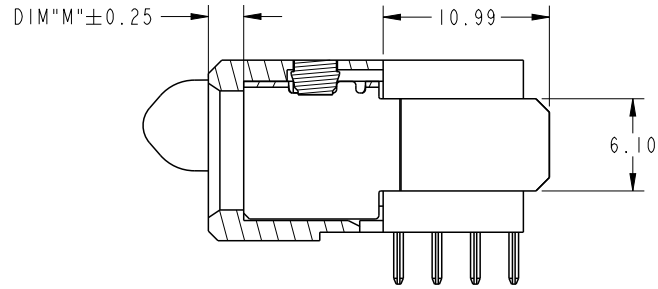
BROKEN-OUT SECTION A-A  
SCALE 2:1



BROKEN-OUT SECTION B-B  
SCALE 2:1



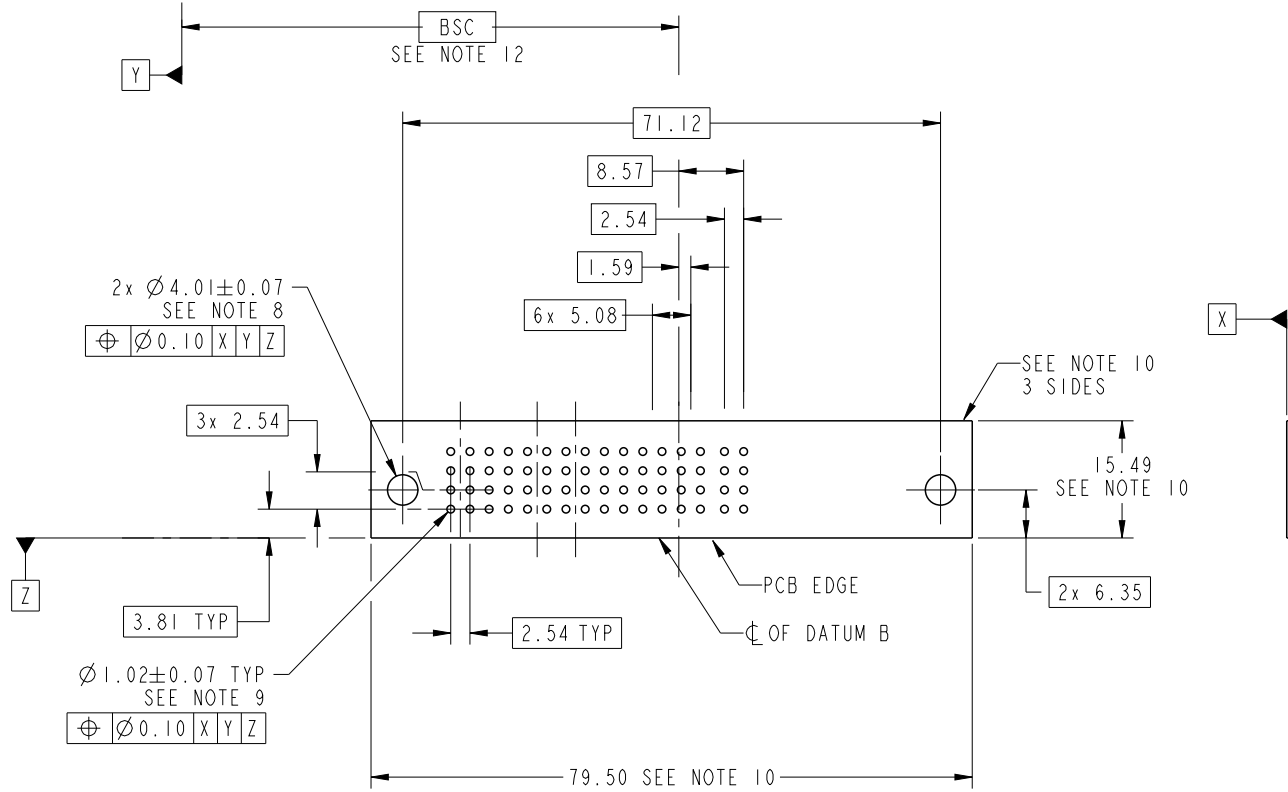
SECTION C-C



SECTION F-F  
SCALE 2:1

spec ref		SEE NOTES		dr	Leborn Luo	2019/04/03	projection 	MM ←→	size	A4	scale	1:1
tolerance std		TOLERANCES UNLESS OTHERWISE SPECIFIED		eng	Leborn Luo	2019/04/15			ecn no	-		
ISO 406				chr	Rainbow Zhan	2019/04/15						
ISO 1101				appr	Zheng, Pei-Min	2019/04/15	product family	PwrBlade	rel level	Released		
surface	linear	0.X	±0.50	Amphenol FCi	title	2P+1ACP+8S+7P		dwg no	51921-019		rev	A
		0.XX	±0.25			R/A STB RECEPTACLE						
ISO 1302	angular	0°	±2°			cat. no.	Product - Customer Drw					

PRODUCT NUMBER  
51921-019LF



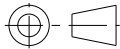
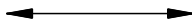
RECOMMENDED PCB LAYOUT

spec ref	SEE NOTES			dr	Leborn Luo	2019/04/03	projection 	MM ←————→	size	A4	scale	1:1	
tolerance std	TOLERANCES UNLESS OTHERWISE SPECIFIED			eng	Leborn Luo	2019/04/15			ecn no	-			
ISO 406				chr	Rainbow Zhan	2019/04/15							
ISO 1101				appr	Zheng, Pei-Min	2019/04/15	product family	PwrBlade		rel level	Released		
surface	linear	0.X	±0.50	Amphenol FCi	part no			2P+1ACP+8S+7P		dwg no	51921-019		rev A
		0.XX	±0.25		R/A STB RECEPTACLE								
ISO 1302	angular	0°	±2°		cat. no.	Product - Customer Drw			sheet 3 of 4				

PRODUCT NUMBER  
51921-019LF

NOTES:

1. THIS PRODUCT MEETS EUROPEAN UNION DIRECTIVES AND OTHER COUNTRY REGULATIONS AS DESCRIBED IN GS-47-0004.
2. MATERIAL:  
HOUSING: HIGH-TEMP THERMOPLASTIC WITH GLASS FILLED, UL 94 V-0, BLACK.  
POWER CONTACT: HIGH CONDUCTIVITY COPPER ALLOY.  
SIGNAL CONTACT: COPPER ALLOY.
3. PLATING SPECIFICATION : 10064183.
4. MANUFACTURER'S NAME, DATE CODE AND OPTIONAL P/N TO BE MARKED ON THIS SURFACE. THE MARK CAN BE OMITTED IF THERE IS NOT ENOUGH SPACE ON THIS SURFACE.
5. PRODUCT SPECIFICATION : GS-12-149.  
APPLICATION SPECIFICATION : BUS-20-067.  
PRODUCT PACKAGE SPECIFICATION: BUS-14-437.
6. PACKAGED IN TRAYS.
7. ALL HOLE DIAMETERS ARE FINISHED HOLE SIZE.
8. MOUNTING HOLES, WHERE APPLICABLE, ARE UNPLATED.
9.  $\varnothing 1.15 \pm 0.025$ MM DRILLED HOLE PLATED WITH 0.00762MM MIN SN OVER 0.0254-0.0762MM CU PLATING TO ACHIEVE A  $1.02 \pm 0.07$ MM HOLE.
10. DENOTES CONNECTOR KEEP OUT ZONE.
11. THE VOID CORING IN BETWEEN POWER MODULES, SIGNAL MODULES AND END MODULES ARE OPTIONAL AND THE SHAPE MAY BE DIFFERENT FOR OPTIMIZE THE MOLDING PROCESS. THE VOID CORING WILL NOT EFFECT TO PRODUCT FUNCTION.
12. DATUM AND BASIC DIMENSIONS ARE ESTABLISHED BY CUSTOMER.
13. THE HOUSING WILL WITHSTAND EXPOSURE TO 260 °C PEAK TEMPERATURE FOR 10 SECONDS IN A WAVE SOLDER APPLICATION.

spec ref	SEE NOTES			dr	Leborn Luo	2019/04/03	projection 	MM 	size	A4	scale	1:1
tolerance std	TOLERANCES UNLESS OTHERWISE SPECIFIED			eng	Leborn Luo	2019/04/15			ecn no	-		
ISO 406				chr	Rainbow Zhan	2019/04/15			product family	PwrBlade		
ISO 1101				appr	Zheng, Pei-Min	2019/04/15	rel level	Released				
surface	linear	0.X	$\pm 0.50$	Amphenol FCi	2P+1ACP+8S+7P R/A STB RECEPTACLE			dwg no	51921-019		rev	A
		0.XX	$\pm 0.25$									
0.XXX	$\pm 0.100$											
ISO 1302	angular	0°	$\pm 2^\circ$	cat. no.	Product - Customer Drw			sheet 4 of 4				