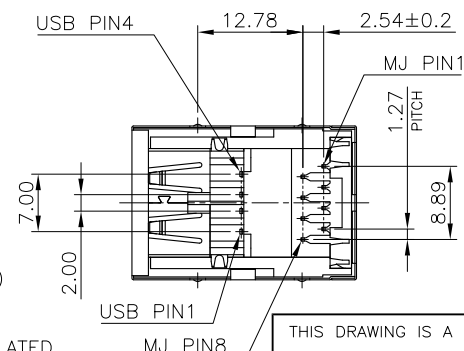



RECOMMENDED PCB LAYOUT  
RECOMMENDED PCB THICKNESS: 1.6mm  
TOLERANCE:  $\pm 0.05$  (TOP VIEW)

4. WAVE SOLDER CAPABLE TO 265°C PER TE CONNECTIVITY SPEC. 109-202, CONDITION B.



OBSOLETE	12.61	WITHOUT HTD	2.8	BLACK	0.762um [30u"]	<del>3-1775855-1</del>
				COOL GRAY 1C	GOLD FLASH	<del>2-1775855-2</del>
				BLACK	GOLD FLASH	<del>2-1775855-1</del>
				BLACK	0.762um [30u"]	1-1775855-1
		WITH HTD 	2.6	BLACK	GOLD FLASH	1775855-3
			2.8	GOOL GRAY 1C	GOLD FLASH	1775855-2
				BLACK	GOLD FLASH	1775855-1
	WEIGHT (gram)	HOT TIN DIP ON SHELL'S LEGS	DIM A	HOUSING COLOR	MIN. GOLD THICKNESS	PART NUMBER

CUSTOMER DRAWING

	A
--	---

---



TE Connectivity

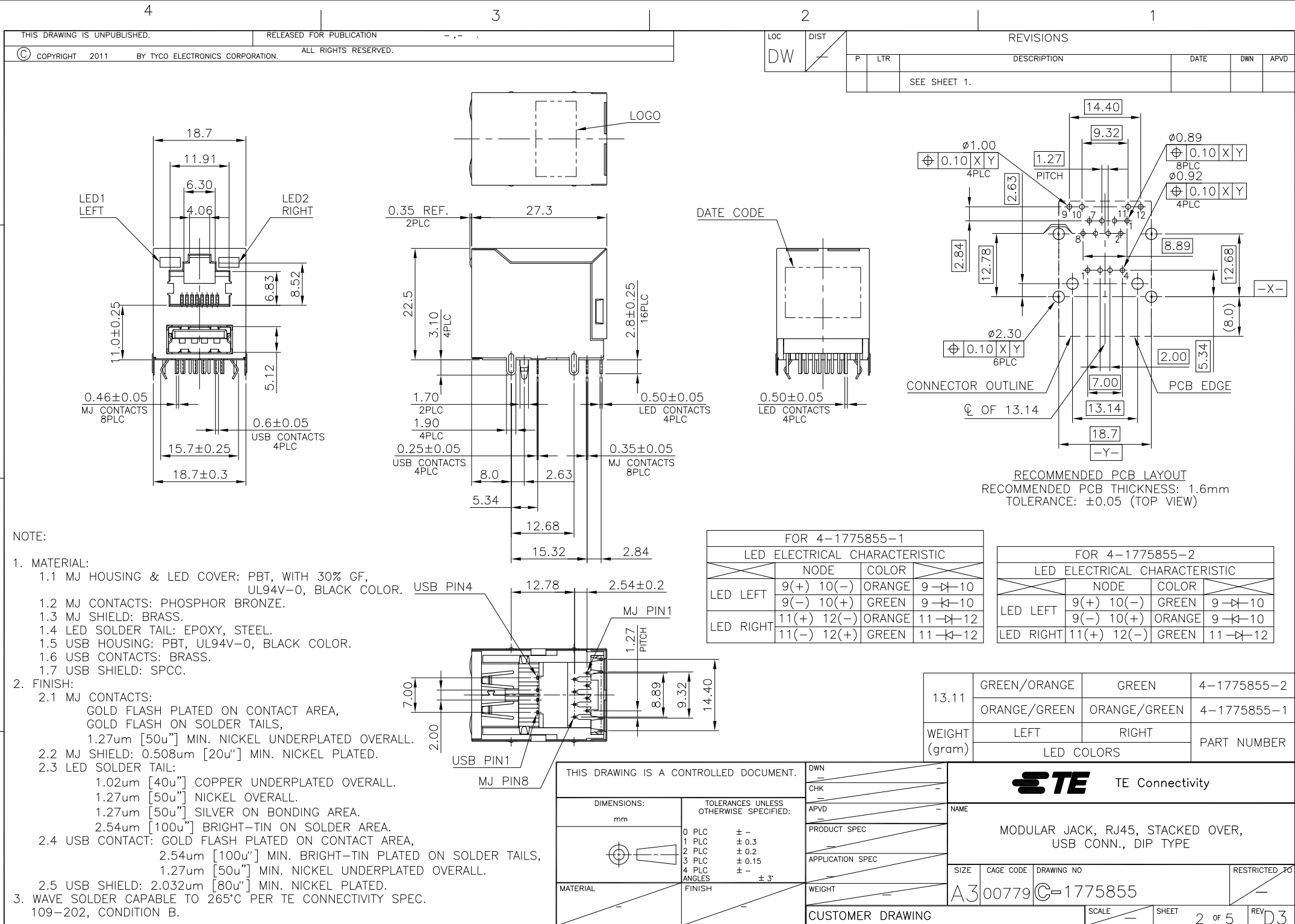
MODULAR JACK, RJ45, STACKED OVER,  
USB CONN., DIP TYPE

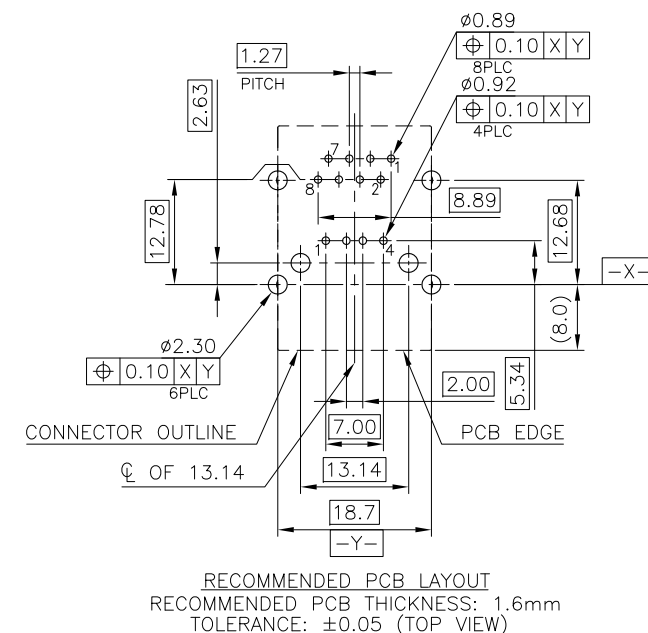
SIZE	CAGE CODE	DRAWING NO	RESTRICTED TO
------	-----------	------------	---------------

A 300330 © 1775855

AS	00779	G=1775855			
			SCALE	DATE	BY

SCALE	SHEET	1 OF 5	REV	D3
-------	-------	--------	-----	----





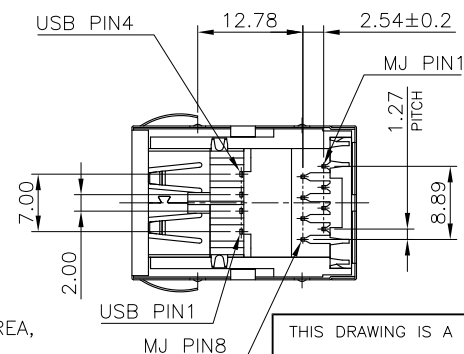
1. MATERIAL:

- 1.1 MJ HOUSING: PBT, WITH 30% GF, UL94V-0,  
COLOR: SEE TABLE.
- 1.2 MJ CONTACTS: PHOSPHOR BRONZE.
- 1.3 MJ SHIELD: BRASS.
- 1.4 USB HOUSING: PBT, UL94V-0, COLOR: SEE TABLE.
- 1.5 USB CONTACTS: BRASS.
- 1.6 USB SHIELD: SPCC.

2. FINISH:


- 2.1 MJ CONTACTS: GOLD FLASH PLATED ON CONTACT AREA,  
GOLD FLASH ON SOLDER TAILS,  
1.27 $\mu$ m [50u"] MIN. NICKEL UNDERPLATED  
OVERALL.
- 2.2 MJ SHIELD: 0.508 $\mu$ m [20u"] MIN. NICKEL PLATED.
- 2.3 USB CONTACT: GOLD FLASH PLATED ON CONTACT AREA,  
2.54 $\mu$ m [100u"] MIN. BRIGHT-TIN PLATED  
1.27 $\mu$ m [50u"] MIN. NICKEL UNDERPLATED
- 2.4 USB SHIELD: 2.032 $\mu$ m [80u"] MIN. NICKEL PLATED.

3. WAVE SOLDER CAPABLE TO 265°C PER TE CONNECTIVITY SPEC.  
109-202, CONDITION B.




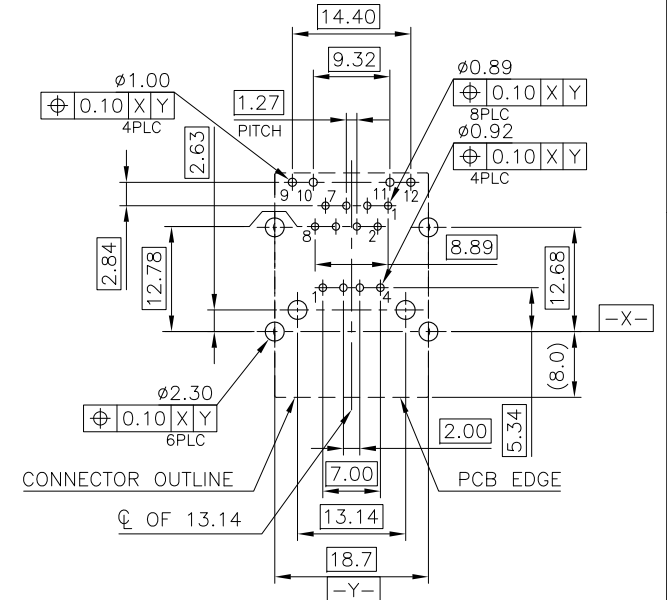
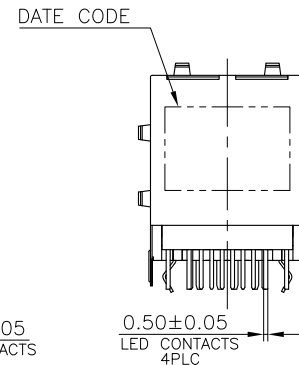
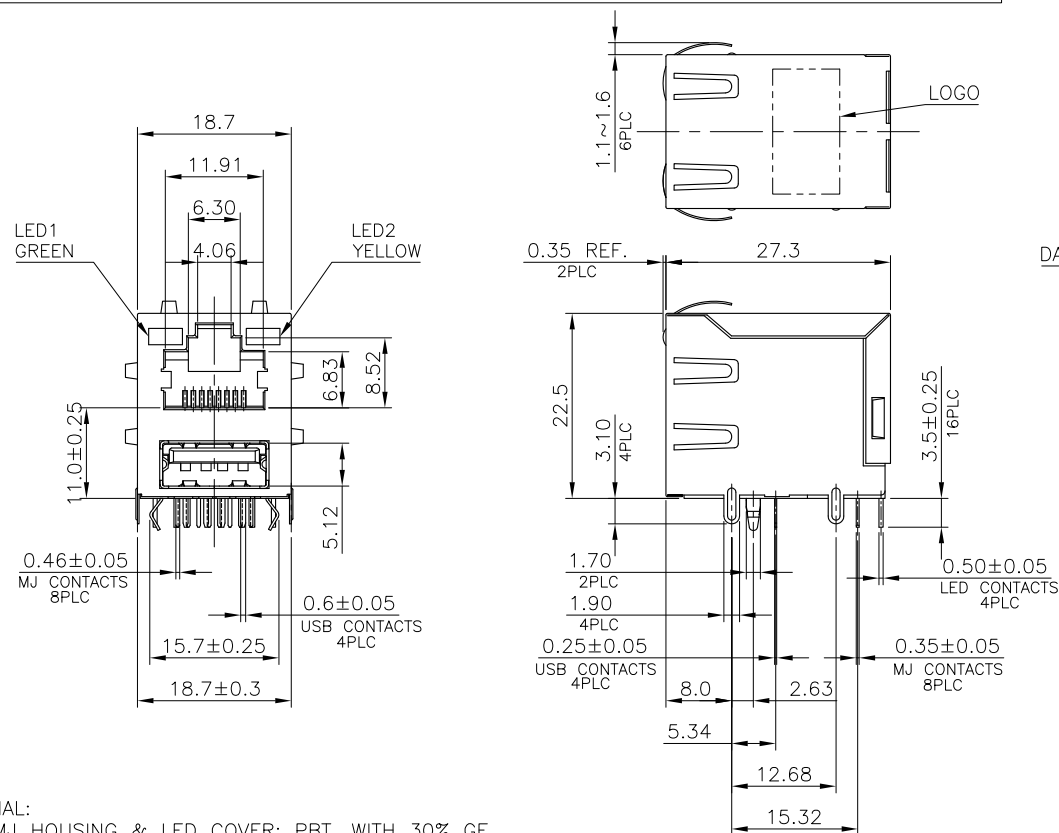
12.69	5-1775855-1
WEIGHT (gram)	PART NUMBER

THIS DRAWING IS A CONTROLLED DOCUMENT

<p>DIMENSIONS:</p> <p>mm</p>	
	
<p>MATERIAL</p>	

TOLERANCES UNLESS OTHERWISE SPECIFIED:	
0 PLC	$\pm -$
1 PLC	$\pm 0.3$
2 PLC	$\pm 0.2$
3 PLC	$\pm 0.15$
4 PLC	$\pm -$
ANGLES	$\pm 3'$
FINISH	

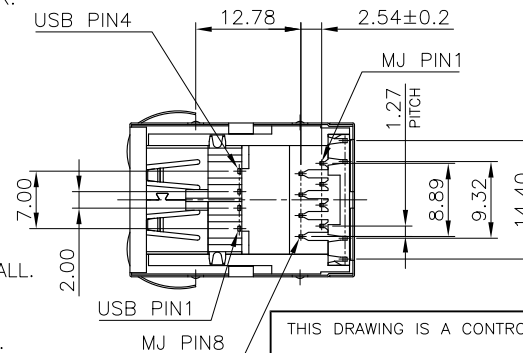
DWN			 TE Connectivity	
CHK				
APVD	NAME		MODULAR JACK, RJ45, STACKED OVER, USB CONN., DIP TYPE	
PRODUCT SPEC				
APPLICATION SPEC				
WEIGHT	SIZE	CAGE CODE	DRAWING NO	RESTRICTED
	A3	00779	C=1775855	
CUSTOMER DRAWING			SCALE	SHEET 3 OF 5 REV D3



RECOMMENDED PCB LAYOUT  
RECOMMENDED PCB THICKNESS: 1.6mm  
TOLERANCE: ±0.05 (TOP VIEW)

NOTE:

- MATERIAL:
  - MJ HOUSING & LED COVER: PBT, WITH 30% GF, UL94V-0, BLACK COLOR.
  - MJ CONTACTS: PHOSPHOR BRONZE.
  - MJ SHIELD: BRASS.
  - LED SOLDER TAIL: EPOXY, STEEL.
  - USB HOUSING: PBT, UL94V-0, BLACK COLOR.
  - USB CONTACTS: BRASS.
  - USB SHIELD: SPCC.
- FINISH:
  - MJ CONTACTS:  
SELECTIVE GOLD PLATED (SEE TABLE)  
ON CONTACT AREA,  
GOLD FLASH ON SOLDER TAILS,  
1.27µm [50u"] MIN. NICKEL UNDERPLATED OVERALL.
  - MJ SHIELD: 0.508µm [20u"] MIN. NICKEL PLATED.
  - LED SOLDER TAIL:  
1.02µm [40u"] COPPER UNDERPLATED OVERALL.  
1.27µm [50u"] NICKEL OVERALL.  
1.27µm [50u"] SILVER ON BONDING AREA.  
2.54µm [100u"] BRIGHT-TIN ON SOLDER AREA.
  - USB CONTACT: SELECTIVE GOLD PLATED (SEE TABLE) ON CONTACT AREA,  
2.54µm [100u"] MIN. BRIGHT-TIN PLATED ON SOLDER TAILS,  
1.27µm [50u"] MIN. NICKEL UNDERPLATED OVERALL.
  - USB SHIELD: 2.032µm [80u"] MIN. NICKEL PLATED.
- WAVE SOLDER CAPABLE TO 265°C PER TE CONNECTIVITY SPEC.  
109-202, CONDITION B.



LED ELECTRICAL CHARACTERISTIC				
NO.	NODE	COLOR		
LED1	9(+)	10(-)	GREEN	9 → 10
LED2	11(+)	12(-)	YELLOW	11 → 12

OBSOLETE	12.90	0.762µm [30u"]	6-1775855-3
		GOLD FLASH	6-1775855-1
	WEIGHT (gram)	MIN. GOLD THICKNESS	PART NUMBER

THIS DRAWING IS A CONTROLLED DOCUMENT.		DWN		
		CHK		
		APVD		
		PRODUCT SPEC		
		APPLICATION SPEC		
		WEIGHT		
		CUSTOMER DRAWING		
		SCALE		
		SHEET		
		REV		

THIS DRAWING IS UNPUBLISHED.

RELEASED FOR PUBLICATION

ALL RIGHTS RESERVED.



COPYRIGHT 2011

BY TYCO ELECTRONICS CORPORATION.

LOC  
DW

DIST

REVISIONS

P

LTR

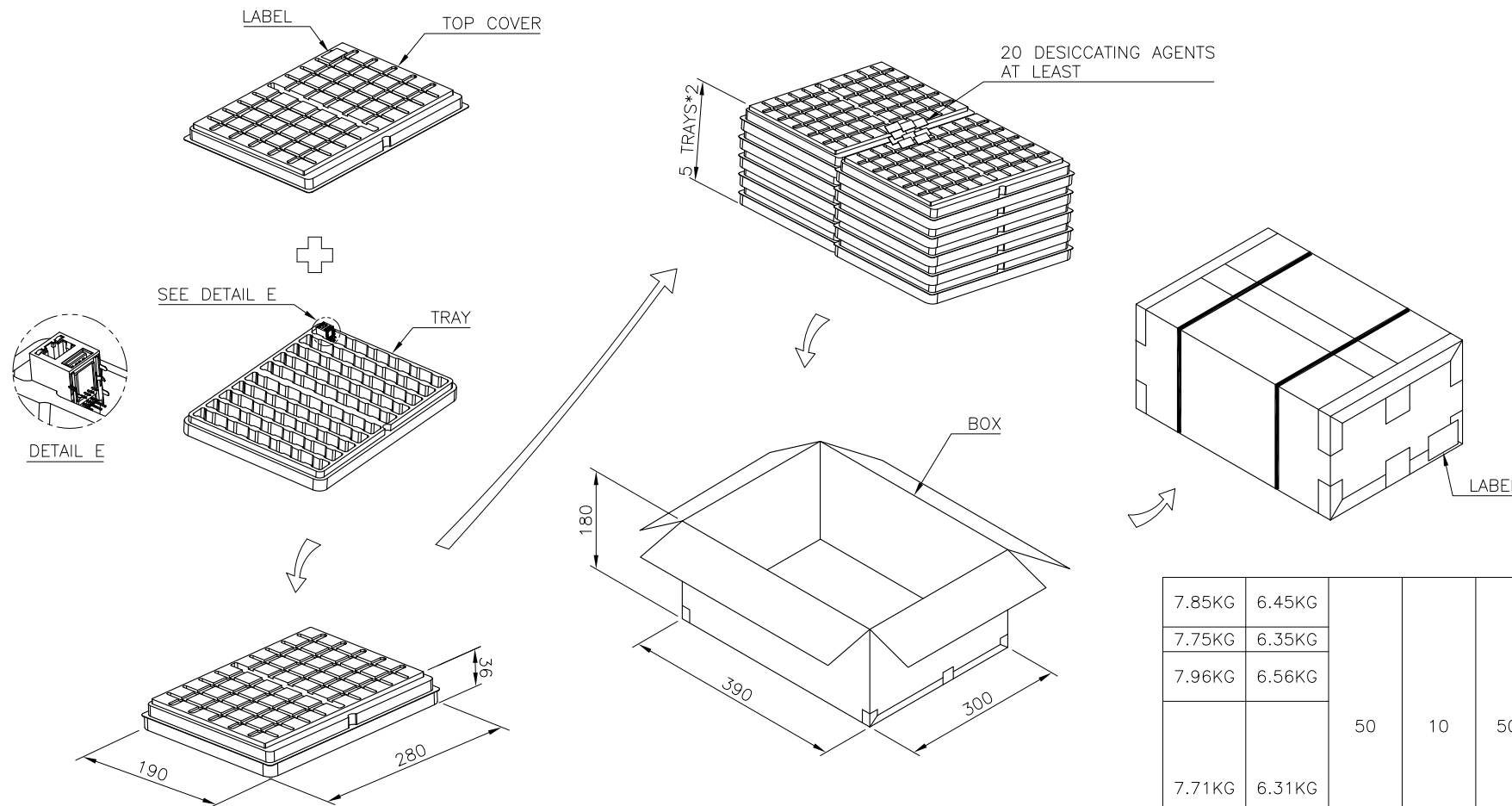
DESCRIPTION

DATE

DWN

APVD

SEE SHEET 1.



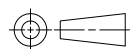
## NOTES:

- MATERIAL:  
TRAY: PVC.  
BOX: CORRUGATED FIBER.
- DIMENSION: SEE DRAWING
- QUANTITY: SEE TABLE
- WEIGHT: SEE TABLE

THIS DRAWING IS A CONTROLLED DOCUMENT.

DIMENSIONS:

mm



TOLERANCES UNLESS OTHERWISE SPECIFIED:

0 PLC	± .
1 PLC	± 0.3
2 PLC	± 0.2
3 PLC	± 0.15
4 PLC	± .
ANGLES	± 3°

MATERIAL

FINISH

DWN

CHK

APVD

PRODUCT SPEC

APPLICATION SPEC

WEIGHT

CUSTOMER DRAWING



TE Connectivity

NAME

MODULAR JACK, RJ45, STACKED OVER,  
USB CONN., DIP TYPE

SIZE

CAGE CODE

DRAWING NO

RESTRICTED TO

A3

00779

C=1775855

SCALE

SHEET

5 OF 5

REV D3