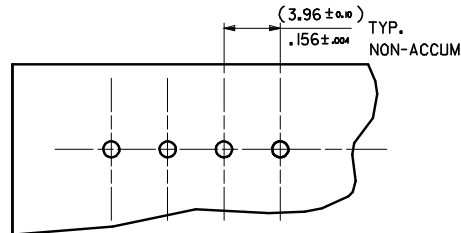
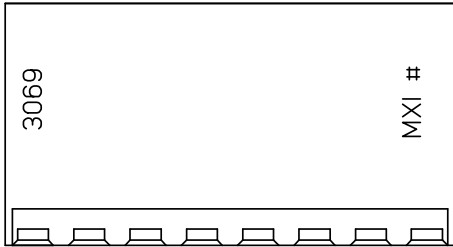
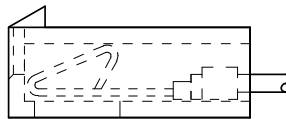
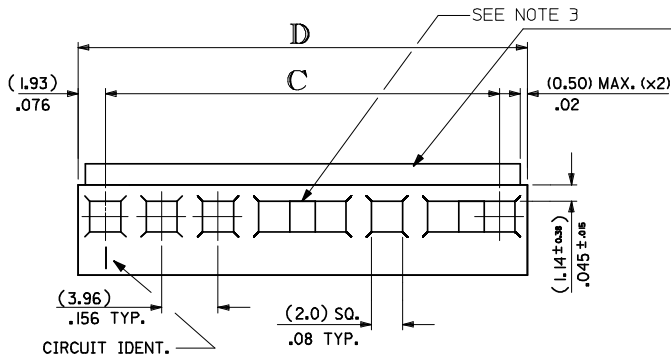


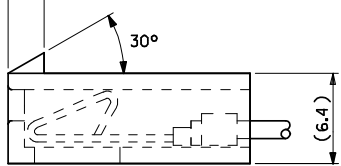
OPTIONAL WINDOW DETAIL



RECOMMENDED P/C BOARD



LOCKING RAMP OPTIONAL
(2.5)
.10



DIRECTION OF TERMINAL INSERTION.

ENG. No. DESIGNATION

3069 - G N 2

'G' GWT (750°C) PA66 BALCK

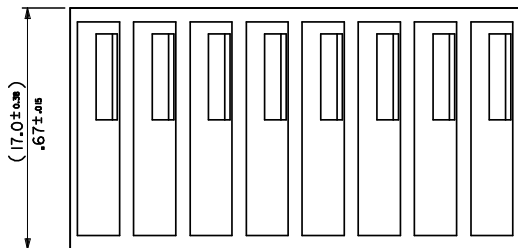
'2' INDICATES HOUSING WITHOUT RAMP
'BLANK' INDICATES HOUSING WITH RAMP

NO. OF CKT'S

No. OF CCTS.	C	D	No. OF CCTS.	C	D
14	(51.51 ± 0.03) 2.028 ± 0.01	(55.37 ± 0.03) 2.180 ± 0.01	2	(3.96 ± 0.03) .156 ± 0.004	(7.82 ± 0.03) .308 ± 0.01
15	(55.47 ± 0.03) 2.184 ± 0.01	(59.33 ± 0.03) 2.336 ± 0.01	3	(7.92 ± 0.03) .312 ± 0.005	(11.79 ± 0.03) .464 ± 0.01
16	(59.44 ± 0.03) 2.340 ± 0.01	(63.30 ± 0.03) 2.492 ± 0.01	4	(11.89 ± 0.03) .620 ± 0.005	(15.75 ± 0.03) .620 ± 0.01
17	(63.40 ± 0.03) 2.496 ± 0.01	(67.26 ± 0.03) 2.648 ± 0.01	5	(15.85 ± 0.03) .624 ± 0.005	(19.71 ± 0.03) .776 ± 0.01
18	(67.36 ± 0.03) 2.652 ± 0.01	(71.22 ± 0.03) 2.804 ± 0.01	6	(19.81 ± 0.03) .780 ± 0.005	(23.67 ± 0.03) .932 ± 0.01
19	(71.32 ± 0.03) 2.808 ± 0.01	(75.18 ± 0.03) 2.960 ± 0.01	7	(23.77 ± 0.03) .936 ± 0.005	(27.64 ± 0.03) 1.088 ± 0.01
20	(75.29 ± 0.03) 2.964 ± 0.01	(79.15 ± 0.03) 3.116 ± 0.01	8	(27.74 ± 0.03) 1.092 ± 0.005	(31.60 ± 0.03) 1.244 ± 0.01
			9	(31.70 ± 0.03) 1.248 ± 0.005	(35.56 ± 0.03) 1.400 ± 0.01
			10	(35.66 ± 0.03) 1.404 ± 0.005	(39.52 ± 0.03) 1.556 ± 0.01
			11	(39.62 ± 0.03) 1.560 ± 0.005	(43.48 ± 0.03) 1.712 ± 0.01
			12	(43.59 ± 0.03) 1.716 ± 0.005	(47.45 ± 0.03) 1.868 ± 0.01
			13	(47.55 ± 0.03) 1.872 ± 0.005	(51.41 ± 0.03) 2.024 ± 0.01

NOTES:

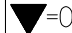
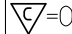
- FOR USE WITH TERMINAL No. 2478 OR 2578
- ASSEMBLED CONNECTOR MATES WITH (1.14)/0.045 SQUARE OR ROUND PIN.
- EXTENDED PIN ENTRY WINDOWS ARE POSSIBLE.



WORKMANAGER ERROR EC NO: E2008-0403 DRWN: BRUTTLE 2008/01/30 CHKD: 2008/01/30 APPR: BMAGUIRE 2008/01/30	QUALITY SYMBOLS ▽=0 ▽=0	GENERAL TOLERANCES (UNLESS SPECIFIED)		DIMENSION STYLE MM/IN		SCALE 4:1	DESIGN UNITS METRIC	THIRD ANGLE PROJECTION
		4 PLACES ± --- ± --- 3 PLACES ± --- ± .010 2 PLACES ± 0.25 ± .014 1 PLACE ± 0.35 ± --- ANGULAR ± 2 °	mm INCH DRAWN BY DATE BRIAN RUTTLE 10/12/2007 CHECKED BY DATE B. MAGUIRE 12/12/2007 APPROVED BY DATE B. MAGUIRE 14/12/2007 MATERIAL NO.	TITLE HOUSING KK CONNECTOR (3.96)/0.156 CRIMP 750 GLOW WIRE VERSION	MOLEX INCORPORATED	SHEET NO. 1 OF 2		
DRAFT WHERE APPLICABLE MUST REMAIN WITHIN DIMENSIONS		SEE CHART		DOCUMENT NO. SD-3069-GN***		THIS DRAWING CONTAINS INFORMATION THAT IS PROPRIETARY TO MOLEX INCORPORATED AND SHOULD NOT BE USED WITHOUT WRITTEN PERMISSION		

No. OF CCTS.	ENG. No.	PART No.	LOCKING RAMP
2	3069-G02	09-93-0200	YES
	↑ -G022	↑ -94-0200	NO
3	-G03	-93-0300	YES
	-G032	-94-0300	NO
4	-G04	-93-0400	YES
	-G042	-94-0400	NO
5	-G05	-93-0500	YES
	-G052	-94-0500	NO
6	-G06	-93-0600	YES
	-G062	-94-0600	NO
7	-G07	-93-0700	YES
	-G072	-94-0700	NO
8	-G08	-93-0800	YES
	-G082	-94-0800	NO
9	-G09	-93-0900	YES
	-G092	-94-0900	NO
10	-G10	-93-1000	YES
	-G102	-94-1000	NO
11	-G11	-93-1100	YES
	-G112	-94-1100	NO
12	-G12	-93-1200	YES
	-G122	-94-1200	NO
13	-G13	-93-1300	YES
	-G132	-94-1300	NO
14	-G14	-93-1400	YES
	-G142	-94-1400	NO
15	-G15	-93-1500	YES
	-G152	-94-1500	NO
16	-G16	-93-1600	YES
	-G162	-94-1600	NO
17	-G17	-93-1700	YES
	-G172	-94-1700	NO
18	-G18	-93-1800	YES
	-G182	-94-1800	NO
19	-G19	-93-1900	YES
	-G192	-94-1900	NO
20	↓ -G20	↓ -93-2000	YES
	3069-G202	09-94-2000	NO

SEE SHEET 1
 EC NO: E2008-0403
 DRWN: BRUTTLE 2008/01/30
 CHKD:
 APPR: BMAGUIRE 2008/01/30

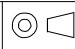

QUALITY SYMBOLS
 = 0
 = 0

2008/01/30
 GENERAL TOLERANCES (UNLESS SPECIFIED)

	mm	INCH
4 PLACES	± ---	± ---
3 PLACES	± ---	± .010
2 PLACES	± 0.25	± .014
1 PLACE	± 0.35	± ---

 ANGULAR ± 2 °
 DRAFT WHERE APPLICABLE MUST REMAIN WITHIN DIMENSIONS

DIMENSION STYLE
 MM/IN
 DRAWN BY: BRIAN RUTTLE
 DATE: 10/12/2007
 CHECKED BY: B. MAGUIRE
 DATE: 12/12/2007
 APPROVED BY: B. MAGUIRE
 DATE: 14/12/2007
 MATERIAL NO.
 SEE CHART

SCALE: 1:1
 DESIGN UNITS: METRIC
 THIRD ANGLE PROJECTION
 TITLE: HOUSING KK CONNECTOR (3.96)/0.156 CRIMP 750 GLOW WIRE VERSION
 MOLEX INCORPORATED
 DOCUMENT NO.: SD-3069-GN***
 SHEET NO.: 2 OF 2
 THIS DRAWING CONTAINS INFORMATION THAT IS PROPRIETARY TO MOLEX INCORPORATED AND SHOULD NOT BE USED WITHOUT WRITTEN PERMISSION