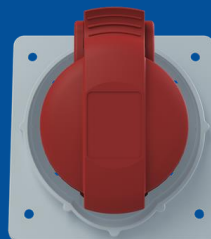


432RAM6

Panel mounted socket

2CMA170044R1000



Panel mounted socket, earthing sleeve position 6h, rated current 32A, IP44 splashproof, minimized flange, angled, 3-poles+neutral+earth, frequency 50-60 Hz, color code Red

GENERAL

Product Name	Panel mounted socket
Product ID	2CMA170044R1000
Function	Panel mounted socket
EAN	73926960443
Catalog Description	Socket-outlet, panel mounting, 6h, 32A, IP44, minimized flange, angled, 3P+N+E
Country of Origin	Czech Republic (CZ)
E-Number Finland	2421414
E-Number Norway	2416487
E-Number Sweden	E2416487
Standards	IEC 60309-1, -2
RoHS Status	Following EU Directive 2011/65/EU

DIMENSIONS

Product Net Width	94 millimetre
Product Net Height	99 millimetre
Product Net Length	116 millimetre
Product Net Depth	116 millimetre
Product Net Weight	0.24 kilogram

TECHNICAL

Product Main Type	ERAM
Color	Red
Number of Poles	5
Clock Position	6Hour
Rated Current	32 ampere
Rated Voltage	200/346 ... 240/415 volt
Frequency	50 hertz 60 hertz
Degree of Protection	IP44
Cable Cross-Section	2.5...10 mm ²
Housing Material	Plastic (PA)
Plug Angle	Angled
Product Group	Easy&Safe

PACKAGING

Package Width	188 millimetre
Package Height	428 millimetre
Package Gross Weight	2.4 kilogram
Package Length	175 millimetre
Package Units	box 10 piece