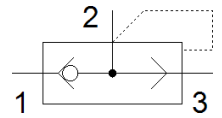
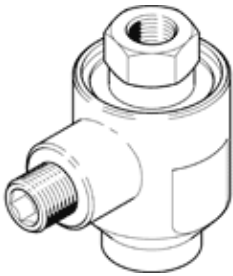


# quick exhaust valve SE-1/8-B

Part number: 9685

FESTO



## Data sheet

| Feature                                               | Value                                                                       |
|-------------------------------------------------------|-----------------------------------------------------------------------------|
| Valve function                                        | Quick exhaust                                                               |
| Pneumatic connection, port 1                          | G1/8                                                                        |
| Pneumatic connection, port 2                          | G1/8                                                                        |
| Mounting type                                         | Threaded                                                                    |
| Standard nominal flow rate, exhaust                   | 660 l/min                                                                   |
| Standard nominal flow rate for pressurisation 6→5 bar | 300 l/min                                                                   |
| Operating pressure                                    | 0.5 ... 10 bar                                                              |
| Ambient temperature                                   | -20 ... 75 °C                                                               |
| Material housing                                      | Zinc die-casting                                                            |
| Operating medium                                      | Compressed air in accordance with ISO8573-1:2010 [7:4:4]                    |
| Nominal size                                          | 5 mm                                                                        |
| Assembly position                                     | Any                                                                         |
| Note on operating and pilot medium                    | Lubricated operation possible (subsequently required for further operation) |
| Medium temperature                                    | -20 ... 75 °C                                                               |
| Sound pressure level                                  | 100 dB(A)                                                                   |
| Product weight                                        | 75 g                                                                        |
| Pneumatic connection, port 3                          | G1/8                                                                        |
| Material seals                                        | NBR                                                                         |