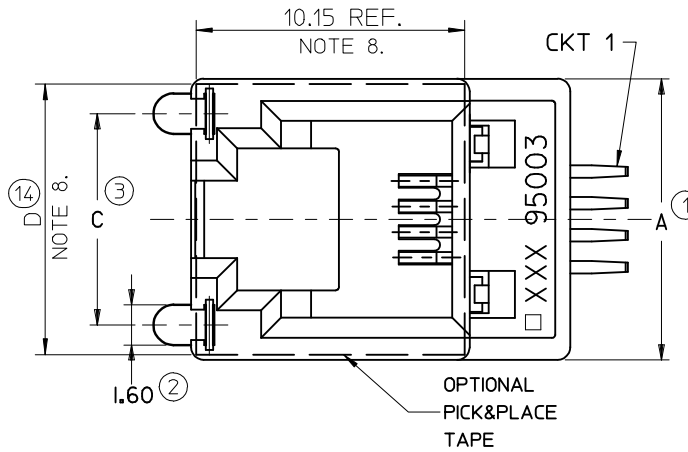
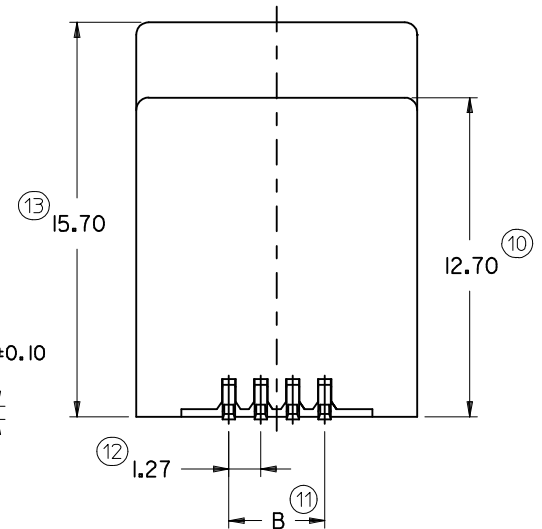
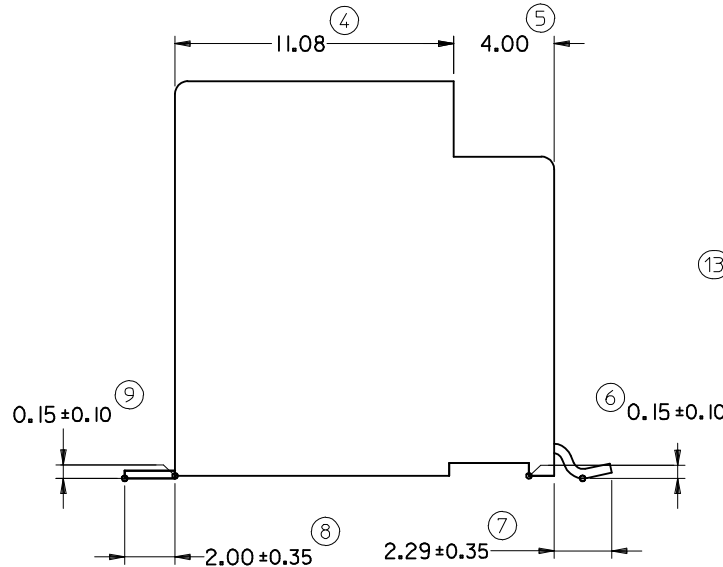


| PART. NO. | HOUSING SIZE | LOADED CKTS | TOOLED | PACKAGING | PICK & PLACE TAPE | A | B ±0.15 | C | D |
|------------|--------------|-------------|--------|---------------------|-------------------|-------|---------|-------|-------|
| 85510-5020 | 8 | 8 | YES | BLISTER ON REEL 13' | NO | 15.24 | 8.89 | 10.77 | 14.40 |
| 85510-5120 | | | | | YES | | | | |
| 85510-5028 | 8 | 8 | YES | BLISTER ON REEL 22' | NO | 13.21 | 6.35 | 9.95 | 12.40 |
| 85510-5128 | | | | | YES | | | | |
| 85510-5019 | 6 | 6 | YES | BLISTER ON REEL 13' | NO | 13.21 | 3.81 | 9.95 | 12.40 |
| 85510-5119 | | | | | YES | | | | |
| 85510-5027 | 6 | 6 | YES | BLISTER ON REEL 22' | NO | 13.21 | 3.81 | 9.95 | 12.40 |
| 85510-5127 | | | | | YES | | | | |
| 85510-5018 | 6 | 4 | NO | BLISTER ON REEL 13' | NO | 11.18 | 3.81 | 8.40 | 10.40 |
| 85510-5118 | | | | | YES | | | | |
| 85510-5026 | 6 | 4 | YES | BLISTER ON REEL 22' | NO | 11.18 | 3.81 | 8.40 | 10.40 |
| 85510-5126 | | | | | YES | | | | |
| 85510-5017 | 4 | 4 | YES | BLISTER ON REEL 13' | NO | 11.18 | 3.81 | 8.40 | 10.40 |
| 85510-5117 | | | | | YES | | | | |
| 85510-5025 | 4 | 4 | YES | BLISTER ON REEL 22' | NO | 11.18 | 3.81 | 8.40 | 10.40 |
| 85510-5125 | | | | | YES | | | | |



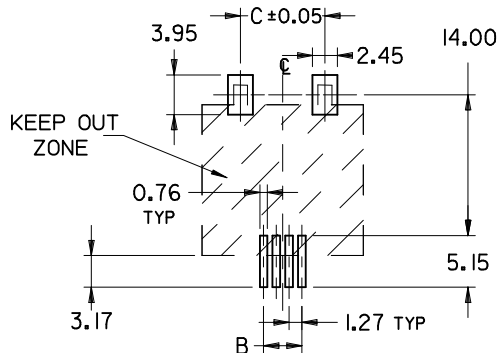
NOTES:

- 1- MATERIAL:
 - HOUSING: LCP FIBER GLASS FILLED UL 94-V0, COLOR BLACK.
 - TERMINAL: COPPER ALLOY PLATED WITH:
 - BASE FINISH: NICKEL
 - CONTACT SURFACE FINISH: GOLD
 - OR
 - GOLD FLASH OVER PALLADIUM NICKEL
 - EXCEEDS PRODUCT REQUIREMENTS BASED ON PS-95503-001
- SOLDER NAILS: COPPER ALLOY PLATED WITH TIN
- 2- JACK FOR MATING WITH IEC 60603-7 AND TIA-1096-A PLUGS (MOLEX 95075 SERIES).
- 3- PRODUCT SPECIFICATION PS-95503-001.
- 4- APPLICATION SPECIFICATION: AS-85513-001
- 5- PACKAGING SPECIFICATION: PK-85510
 - SHEET 1 (TAPE ON REEL)
 - SHEET 2 (BLISTER ON REEL 13')
 - SHEET 3 (BLISTER ON REEL 22')
- 6- COPLANARITY OF SIGNAL LEADS: 0.10 MAX
- 7- MANUFACTURING ID CAN BE EITHER MG, MXF OR MXI.
- 8- PICK AND PLACE KAPTON AVAILABLE AS OPTION.
- LAST INSPECTION NUMBER: 14



PCB MOUNTING PATTERNS

(SEE FROM COMPONENT SIDE)
(SCALE 2:1)



(ONLY 4/4 VERSION PADS SHOWN)
ALL DIMENSIONS REF DIMENSIONS

| UPDATED DIMENSIONS EC NO: IPG2015-0192 TDRWN: JKEARNS 2014/07/25 CHKD: APPR: STGRIFFIN 2014/08/29 | QUALITY SYMBOLS | GENERAL TOLERANCES (UNLESS SPECIFIED) | DIMENSION STYLE | SCALE | DESIGN UNITS | THIRD ANGLE PROJECTION | | | | | | | | | | | | | | | |
|--|----------------------------------|---|--------------------|-------------------------------------|----------------------------|------------------------|-------|-------|----------|-------|-------|----------|--------|-------|---------|--------|-------|---------|-----|--------|--|
| | $\nabla = 0$ $\nabla C = 0$ | <table border="1"> <thead> <tr> <th></th> <th>mm</th> <th>INCH</th> </tr> </thead> <tbody> <tr> <td>4 PLACES</td> <td>± ---</td> <td>± ---</td> </tr> <tr> <td>3 PLACES</td> <td>± ---</td> <td>± ---</td> </tr> <tr> <td>2 PLACES</td> <td>± 0.15</td> <td>± ---</td> </tr> <tr> <td>1 PLACE</td> <td>± 0.25</td> <td>± ---</td> </tr> </tbody> </table> | | mm | INCH | 4 PLACES | ± --- | ± --- | 3 PLACES | ± --- | ± --- | 2 PLACES | ± 0.15 | ± --- | 1 PLACE | ± 0.25 | ± --- | MM ONLY | 5:1 | METRIC | |
| | | mm | INCH | | | | | | | | | | | | | | | | | | |
| | 4 PLACES | ± --- | ± --- | | | | | | | | | | | | | | | | | | |
| 3 PLACES | ± --- | ± --- | | | | | | | | | | | | | | | | | | | |
| 2 PLACES | ± 0.15 | ± --- | | | | | | | | | | | | | | | | | | | |
| 1 PLACE | ± 0.25 | ± --- | | | | | | | | | | | | | | | | | | | |
| DRAWN BY: HB CHECKED BY: TB APPROVED BY: FB DATE: 95/11/21 | MATERIAL NO. SEE CHART | TITLE TOP ENTRY SMT JACKS 4/4 6/6 AND 8/8 POS. WITH SOLDER NAILS | MOLEX INCORPORATED | DOCUMENT NO. SD-85510-002 | SHEET NO. 1 OF 1 | | | | | | | | | | | | | | | | |
| DRAFT WHERE APPLICABLE MUST REMAIN WITHIN DIMENSIONS | SIZE A3 | THIS DRAWING CONTAINS INFORMATION THAT IS PROPRIETARY TO MOLEX INCORPORATED AND SHOULD NOT BE USED WITHOUT WRITTEN PERMISSION | | | | | | | | | | | | | | | | | | | |