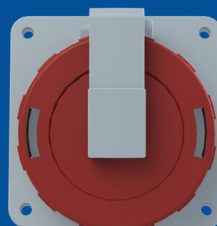


416RAU6W

## Panel mounted socket

## 2CMA167030R1000



Socket-outlet, panel mounting, earthing sleeve position 6h, rated current 16A, IP67 watertight, unified flange, angled, 3-poles+neutral+earth, frequency 50-60 Hz, color code Red

## GENERAL

<b>Product Name</b>	Panel mounted socket
<b>Product ID</b>	2CMA167030R1000
<b>Function</b>	Socket outlet, panel mounting, unified flange, angled
<b>EAN</b>	739269662
<b>Catalog Description</b>	Socket-outlet, panel mounting, 6h, 16A, IP67, unified flange, angled, 3P+N+E
<b>Country of Origin</b>	Czech Republic (CZ)
<b>E-Number Finland</b>	2421268
<b>E-Number Norway</b>	1561923
<b>E-Number Sweden</b>	E2416712
<b>Standards</b>	IEC 60309-1, -2
<b>RoHS Status</b>	Following EU Directive 2011/65/EU

## DIMENSIONS

<b>Product Net Width</b>	104 millimetre
<b>Product Net Height</b>	104 millimetre
<b>Product Net Length</b>	104 millimetre
<b>Product Net Depth</b>	104 millimetre
<b>Product Net Weight</b>	0.18 kilogram

## TECHNICAL

<b>Product Main Type</b>	TRAU
<b>Color</b>	Red
<b>Number of Poles</b>	5
<b>Clock Position</b>	6Hour
<b>Rated Current</b>	16 ampere
<b>Rated Voltage</b>	200/346 ... 240/415 volt
<b>Frequency</b>	50 hertz 60 hertz
<b>Degree of Protection</b>	IP67 IP69
<b>Cable Cross-Section</b>	1.5...4 mm <sup>2</sup>
<b>Housing Material</b>	Thermoplastic (PBT)
<b>Plug Angle</b>	Angled
<b>Product Group</b>	Tough&Safe

## PACKAGING

<b>Package Width</b>	110 millimetre
<b>Package Height</b>	110 millimetre
<b>Package Gross Weight</b>	0.18 kilogram
<b>Package Length</b>	110 millimetre
<b>Package Units</b>	box 1 piece