



MPLAB[®] Xpress Evaluation Board User's Guide

High-Performance Microcontrollers
with Integrated On-Board Programmer

Note the following details of the code protection feature on Microchip devices:

- Microchip products meet the specification contained in their particular Microchip Data Sheet.
- Microchip believes that its family of products is one of the most secure families of its kind on the market today, when used in the intended manner and under normal conditions.
- There are dishonest and possibly illegal methods used to breach the code protection feature. All of these methods, to our knowledge, require using the Microchip products in a manner outside the operating specifications contained in Microchip's Data Sheets. Most likely, the person doing so is engaged in theft of intellectual property.
- Microchip is willing to work with the customer who is concerned about the integrity of their code.
- Neither Microchip nor any other semiconductor manufacturer can guarantee the security of their code. Code protection does not mean that we are guaranteeing the product as "unbreakable."

Code protection is constantly evolving. We at Microchip are committed to continuously improving the code protection features of our products. Attempts to break Microchip's code protection feature may be a violation of the Digital Millennium Copyright Act. If such acts allow unauthorized access to your software or other copyrighted work, you may have a right to sue for relief under that Act.

Information contained in this publication regarding device applications and the like is provided only for your convenience and may be superseded by updates. It is your responsibility to ensure that your application meets with your specifications. MICROCHIP MAKES NO REPRESENTATIONS OR WARRANTIES OF ANY KIND WHETHER EXPRESS OR IMPLIED, WRITTEN OR ORAL, STATUTORY OR OTHERWISE, RELATED TO THE INFORMATION, INCLUDING BUT NOT LIMITED TO ITS CONDITION, QUALITY, PERFORMANCE, MERCHANTABILITY OR FITNESS FOR PURPOSE. Microchip disclaims all liability arising from this information and its use. Use of Microchip devices in life support and/or safety applications is entirely at the buyer's risk, and the buyer agrees to defend, indemnify and hold harmless Microchip from any and all damages, claims, suits, or expenses resulting from such use. No licenses are conveyed, implicitly or otherwise, under any Microchip intellectual property rights unless otherwise stated.

Microchip received ISO/TS-16949:2009 certification for its worldwide headquarters, design and wafer fabrication facilities in Chandler and Tempe, Arizona; Gresham, Oregon and design centers in California and India. The Company's quality system processes and procedures are for its PIC® MCUs and dsPIC® DSCs, KEELOQ® code hopping devices, Serial EEPROMs, microperipherals, nonvolatile memory and analog products. In addition, Microchip's quality system for the design and manufacture of development systems is ISO 9001:2000 certified.

**QUALITY MANAGEMENT SYSTEM
CERTIFIED BY DNV
= ISO/TS 16949 =**

Trademarks

The Microchip name and logo, the Microchip logo, AnyRate, AVR, AVR logo, AVR Freaks, BeaconThings, BitCloud, chipKIT, chipKIT logo, CryptoMemory, CryptoRF, dsPIC, FlashFlex, flexPWR, Heldo, JukeBlox, KEELOQ, KEELOQ logo, Klear, LANCheck, LINK MD, maXStylus, maXTouch, MediaLB, megaAVR, MOST, MOST logo, MPLAB, OptoLyzer, PIC, picoPower, PICSTART, PIC32 logo, Prochip Designer, QTouch, RightTouch, SAM-BA, SpyNIC, SST, SST Logo, SuperFlash, tinyAVR, UNI/O, and XMEGA are registered trademarks of Microchip Technology Incorporated in the U.S.A. and other countries.

ClockWorks, The Embedded Control Solutions Company, EtherSynch, Hyper Speed Control, HyperLight Load, IntelliMOS, mTouch, Precision Edge, and Quiet-Wire are registered trademarks of Microchip Technology Incorporated in the U.S.A.

Adjacent Key Suppression, AKS, Analog-for-the-Digital Age, Any Capacitor, AnyIn, AnyOut, BodyCom, CodeGuard, CryptoAuthentication, CryptoCompanion, CryptoController, dsPICDEM, dsPICDEM.net, Dynamic Average Matching, DAM, ECAN, EtherGREEN, In-Circuit Serial Programming, ICSP, Inter-Chip Connectivity, JitterBlocker, KlearNet, KlearNet logo, Mindi, MiWi, motorBench, MPASM, MPF, MPLAB Certified logo, MPLIB, MPLINK, MultiTRAK, NetDetach, Omniscient Code Generation, PICDEM, PICDEM.net, PICKit, PICtail, PureSilicon, QMatrix, RightTouch logo, REAL ICE, Ripple Blocker, SAM-ICE, Serial Quad I/O, SMART-I.S., SQI, SuperSwitcher, SuperSwitcher II, Total Endurance, TSHARC, USBCheck, VariSense, ViewSpan, WiperLock, Wireless DNA, and ZENA are trademarks of Microchip Technology Incorporated in the U.S.A. and other countries.

SQTP is a service mark of Microchip Technology Incorporated in the U.S.A.

Silicon Storage Technology is a registered trademark of Microchip Technology Inc. in other countries.

GestIC is a registered trademark of Microchip Technology Germany II GmbH & Co. KG, a subsidiary of Microchip Technology Inc., in other countries.

All other trademarks mentioned herein are property of their respective companies.

© 2016-2017, Microchip Technology Incorporated, All Rights Reserved.

ISBN: 978-1-5224-2369-0



Table of Contents

Preface	7
Chapter 1. Introduction to the MPLAB[®] Xpress Evaluation Board	
1.1 MPLAB Xpress Evaluation Board Contents	11
1.2 MPLAB Xpress Evaluation Board Layout	13
1.3 Power Sources	15
1.3.1 USB Connector	15
1.3.2 2.7V-16V External Power Supply (General Purpose Xpress Board Only)	15
Chapter 2. Getting Started	
2.1 Programming the MPLAB Xpress Evaluation Board	17
2.2 Programming Xpress Board Using MPLAB X	21
2.3 Navigating Xpress Examples	22
2.4 Using an Existing MPLAB X IDE Project	24
Appendix A. Schematic	
A.1 MPLAB Xpress Evaluation Board Schematic	27
Worldwide Sales and Service	33

MPLAB[®] Xpress Evaluation Board User's Guide

NOTES:

Preface

NOTICE TO CUSTOMERS

All documentation becomes dated, and this manual is no exception. Microchip tools and documentation are constantly evolving to meet customer needs, so some actual dialogs and/or tool descriptions may differ from those in this document. Please refer to our website (www.microchip.com) to obtain the latest documentation available.

Documents are identified with a “DS” number. This number is located on the bottom of each page, in front of the page number. The numbering convention for the DS number is “DSXXXXXXXXA”, where “XXXXXXXX” is the document number and “A” is the revision level of the document.

For the most up-to-date information on development tools, see the MPLAB[®] IDE online help. Select the Help menu, and then Topics to open a list of available online help files.

INTRODUCTION

This chapter contains general information that will be useful to know when using the Microchip MPLAB[®] Xpress Evaluation Board User's Guide. Topics discussed in this chapter include:

- [Document Layout](#)
- [Conventions Used in this Guide](#)
- [Recommended Reading](#)
- [The Microchip WebSite](#)
- [Development Systems Customer Change Notification Service](#)
- [Customer Support](#)
- [Revision History](#)

DOCUMENT LAYOUT

This document describes how to use the MPLAB[®] Xpress Evaluation Board User's Guide as a development tool to emulate and debug firmware on a target board. The document is organized as follows:

- **Chapter 1. “Introduction to the MPLAB[®] Xpress Evaluation Board”** – This chapter contains general information regarding the Xpress Evaluation Board kit contents, layout and power sources.
- **Chapter 2. “Getting Started”** – This chapter offers information on how to program the Xpress Evaluation Board, as well as how to import an existing MPLAB X IDE project.
- **Appendix A. “Schematic”** – This appendix contains the Xpress Evaluation Board schematic.

MPLAB® Xpress Evaluation Board User's Guide

CONVENTIONS USED IN THIS GUIDE

This manual uses the following documentation conventions:

DOCUMENTATION CONVENTIONS

Description	Represents	Examples
Arial font:		
Italic characters	Referenced books	<i>MPLAB® IDE User's Guide</i>
	Emphasized text	...is the <i>only</i> compiler...
Initial caps	A window	the Output window
	A dialog	the Settings dialog
	A menu selection	select Enable Programmer
Quotes	A field name in a window or dialog	"Save project before build"
Underlined, italic text with right angle bracket	A menu path	<u><i>File>Save</i></u>
Bold characters	A dialog button	Click OK
	A tab	Click the Power tab
N'Rnnnn	A number in verilog format, where N is the total number of digits, R is the radix and n is a digit.	4'b0010, 2'hF1
Text in angle brackets < >	A key on the keyboard	Press <Enter>, <F1>
Courier New font:		
Plain Courier New	Sample source code	#define START
	Filenames	autoexec.bat
	File paths	c:\mcc18\h
	Keywords	_asm, _endasm, static
	Command-line options	-Opa+, -Opa-
	Bit values	0, 1
	Constants	0xFF, 'A'
Italic Courier New	A variable argument	<i>file.o</i> , where <i>file</i> can be any valid filename
Square brackets []	Optional arguments	mcc18 [options] <i>file</i> [options]
Curly brackets and pipe character: { }	Choice of mutually exclusive arguments; an OR selection	errorlevel {0 1}
Ellipses...	Replaces repeated text	var_name [, var_name...]
	Represents code supplied by user	void main (void) { ... }

RECOMMENDED READING

This user's guide describes how to use the Xpress Evaluation Board. For the latest information on using other tools, refer to the MPLAB® X IDE home page: www.microchip.com/mplabx/. This resource page contains updated documentation, downloads and links to other MPLAB X IDE compatible tools, plug-ins and much more.

THE MICROCHIP WEBSITE

Microchip provides online support via our website at www.microchip.com. This website is used as a means to make files and information easily available to customers. Accessible by using your favorite Internet browser, the website contains the following information:

- **Product Support** – Data sheets and errata, application notes and sample programs, design resources, user's guides and hardware support documents, latest software releases and archived software
- **MPLAB® Xpress Evaluation Board User's Guide** – Specific product support can be accessed via our website at www.microchip.com/mplab/mplab-xpress
- **General Technical Support** – Frequently Asked Questions (FAQs), technical support requests, online discussion groups, Microchip consultant program member listing
- **Business of Microchip** – Product selector and ordering guides, latest Microchip press releases, listing of seminars and events, listings of Microchip sales offices, distributors and factory representatives

DEVELOPMENT SYSTEMS CUSTOMER CHANGE NOTIFICATION SERVICE

Microchip's customer notification service helps keep customers current on Microchip products. Subscribers will receive e-mail notification whenever there are changes, updates, revisions or errata related to a specified product family or development tool of interest.

To register, access the Microchip website at www.microchip.com, click on Customer Change Notification and follow the registration instructions.

The Development Systems product group categories are:

- **Compilers** – The latest information on Microchip C compilers, assemblers, linkers and other language tools. These include all MPLAB C compilers; all MPLAB assemblers (including MPASM™ assembler); all MPLAB linkers (including MPLINK™ object linker); and all MPLAB librarians (including MPLIB™ object librarian).
- **Emulators** – The latest information on Microchip in-circuit emulators. This includes the MPLAB REAL ICE™ and MPLAB ICE 2000 in-circuit emulators.
- **In-Circuit Debuggers** – The latest information on the Microchip in-circuit debuggers. This includes MPLAB ICD 3 in-circuit debuggers and PICKit™ 3 debug express.
- **MPLAB X IDE** – The latest information on Microchip MPLAB X IDE, the Windows® Integrated Development Environment for development systems tools. This list is focused on the MPLAB IDE, MPLAB IDE Project Manager, MPLAB Editor and MPLAB SIM simulator, as well as general editing and debugging features.
- **Programmers** – The latest information on Microchip programmers. These include production programmers, such as MPLAB REAL ICE in-circuit emulator, MPLAB ICD 3 in-circuit debugger and MPLAB PM3 device programmers. Also included are non-production development programmers, such as PICSTART® Plus and PICKit 2 and 3.

MPLAB[®] Xpress Evaluation Board User's Guide

CUSTOMER SUPPORT

Users of Microchip products can receive assistance through several channels:

- Distributor or Representative
- Local Sales Office
- Field Application Engineer (FAE)
- Technical Support

Customers should contact their distributor, representative or Field Application Engineer (FAE) for support. Local sales offices are also available to help customers. A listing of sales offices and locations is included in the back of this document.

Technical support is available through the website at:

<http://www.microchip.com/support>.

REVISION HISTORY

Revision A (April 2016)

Initial release of this document.

Revision B (October 2017)

Updated Chapter 1. Added sections 2.2 and 2.3 in Chapter 2, and figures A-3, A-4, and A-5 in Appendix A. Other minor corrections.



MPLAB[®] XPRESS EVALUATION BOARD USER'S GUIDE

Chapter 1. Introduction to the MPLAB[®] Xpress Evaluation Board

The MPLAB[®] Xpress Evaluation Board is a development tool designed to work in conjunction with the cloud-based MPLAB[®] Xpress Integrated Development Environment (IDE). The combination of the IDE and the Xpress Evaluation Board allows for quick experimentation and code development without having to download the IDE or compilers. There are three variants of Xpress Evaluation Boards:

1. General Purpose MPLAB Xpress Evaluation Board
2. Device Specific MPLAB Xpress Evaluation Board (20-pin variant)
3. Device Specific MPLAB Xpress Evaluation Board (40-pin variant)

The General Purpose Xpress board contains a built-in programmer and includes an 8-bit PIC16F18855 microcontroller, allowing for easy programming without additional programming tools. It also contains a set of four indication LEDs, a potentiometer, a push button switch and a mikroBUS[™] socket to accommodate a variety of plug-in MikroElektronika click boards that can be used in application development.

The Device Specific Xpress boards contain a specific PIC16 or PIC18 device the board is targeted towards in addition to the built-in programmer. They are available in 20-pin and 40-pin variants based on the device.

All the Xpress boards contain two sections: the programmer section and the application section. The programmer section contains the circuitry necessary for programming, while the application section contains the circuitry that is used by the microcontroller application.

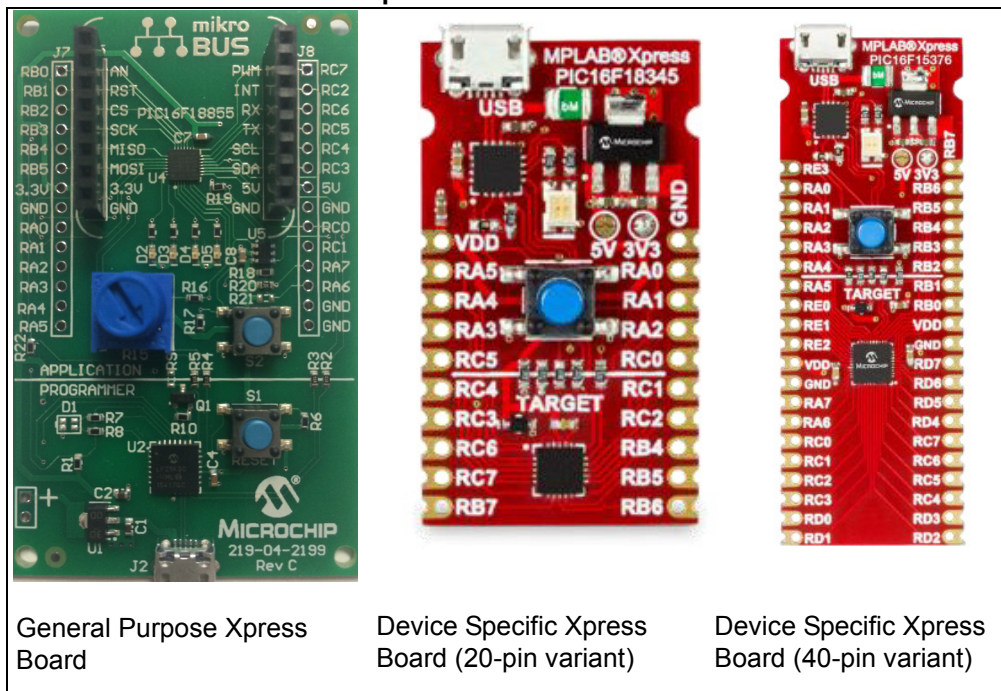
1.1 MPLAB Xpress EVALUATION BOARD CONTENTS

The Xpress Evaluation Board kit contains the following:

- An Xpress Evaluation Board
- Quick Start Guide

MPLAB[®] Xpress Evaluation Board User's Guide

FIGURE 1-1: MPLAB[®] Xpress EVALUATION BOARD VARIANTS



General Purpose Xpress Board

Device Specific Xpress Board (20-pin variant)

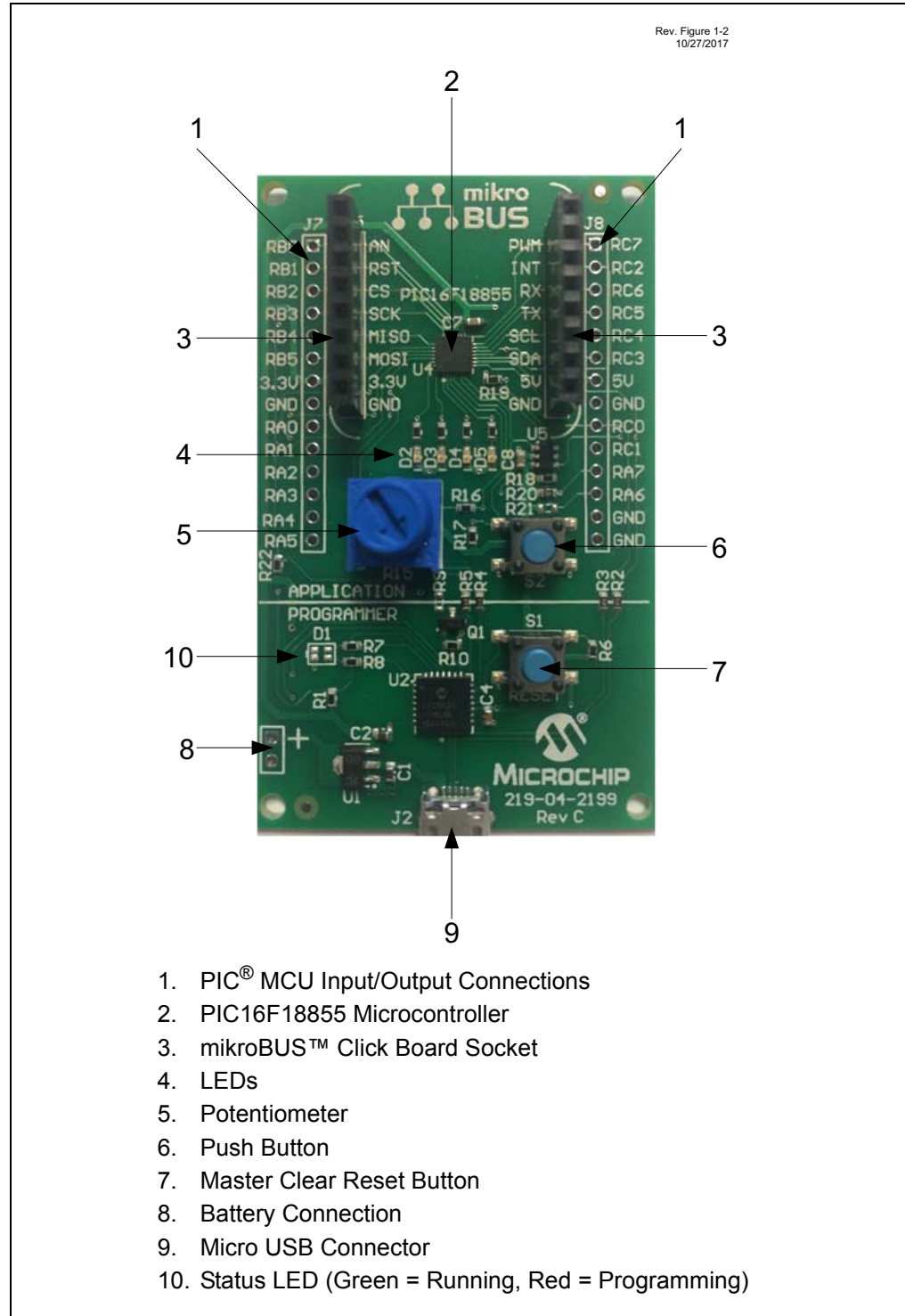
Device Specific Xpress Board (40-pin variant)

Introduction to the MPLAB[®] Xpress Evaluation Board

1.2 MPLAB Xpress EVALUATION BOARD LAYOUT

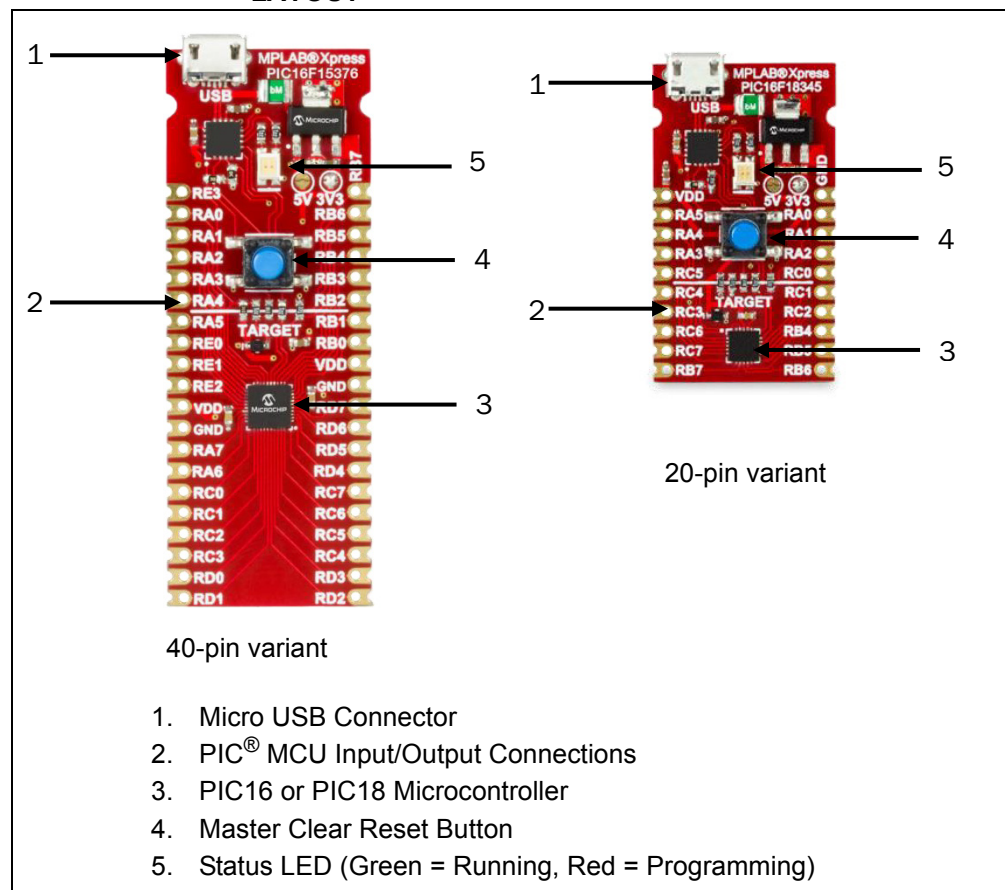
Figure 1-2 and Figure 1-3 identify the major features of the MPLAB Xpress Evaluation Boards.

FIGURE 1-2: GENERAL PURPOSE MPLAB[®] Xpress EVALUATION BOARD LAYOUT



MPLAB[®] Xpress Evaluation Board User's Guide

FIGURE 1-3: DEVICE SPECIFIC MPLAB[®] XPRESS EVALUATION BOARD LAYOUT



Introduction to the MPLAB[®] Xpress Evaluation Board

1.3 POWER SOURCES

The MPLAB Xpress Evaluation Boards can be powered in one of two ways, depending on its usage. It should be noted that only one power source should be connected at a time.

1.3.1 USB Connector

The USB connector will power the entire Xpress Evaluation Board. With USB power connected to J2, Status LED will always be green to indicate that +3.3V is available on the board.

1.3.2 2.7V-16V External Power Supply (General Purpose Xpress Board Only)

The external power supply ([Figure 1-2](#)) option is available on the General Purpose Xpress Board only. It will also power the entire Xpress Evaluation Board. The external power supply is connected to a Low Dropout (LDO) voltage regulator, configured to deliver 3.3V to the Xpress board. The external power supply range is from 2.7V to 16V, allowing use with two to six primary cells, 9V alkaline batteries, or one or two-cell Li-Ion batteries. LED D1 will illuminate green when the external power supply is active and supplying sufficient voltage.

MPLAB[®] Xpress Evaluation Board User's Guide

NOTES:

Chapter 2. Getting Started

The Xpress Evaluation Boards are designed to work with the MPLAB[®] Xpress IDE, but can also be used with MPLAB[®] X IDE. MPLAB Xpress IDE does not require any downloads and can be accessed by visiting mplabxpress.microchip.com.

The Xpress Evaluation Boards allow for rapid development of custom applications without the need to download the IDE or compilers to a computer and allows the storage of a project in the cloud. This allows a user the ability to access their project from virtually anywhere (requires Internet connection) and from any computer. Microchip also provides code examples to help get you started.

2.1 PROGRAMMING THE MPLAB Xpress EVALUATION BOARD

Programming the Xpress board is accomplished by connecting a micro USB cable to the on-board USB connector, creating the `.hex` file, and dragging and dropping the `.hex` file into the Xpress board.

To begin, connect a micro USB cable to the on-board USB connector. Next, open the MPLAB Xpress IDE.

The procedure to create a new project or open an existing MPLAB Xpress project is the same as within MPLAB X IDE. Navigate to the **File** tab, select *Project Properties > Configuration > Hardware Tool > Hardware Tools* and select 'Simulator/Xpress Board' (see [Figure 2-1](#)). This ensures that the Xpress board is chosen as the development tool. Once selected, the 'Simulator/Xpress Board' selection will appear under the 'Debug Tool' section in the Dashboard window (see [Figure 2-2](#)). Once the project is open and ready to program into the target device, simply click on the **Make and Program Device** button (see [Figure 2-3](#)). MPLAB Xpress will build and compile the project, and once completed, will open or save the `.hex` file that was created. Under the **Save** button, you can either hit **Save** and the `.hex` file will be stored in your downloads folder, or you can hit **Save as** and choose the location for the `.hex` file. It is important to remember where the file is stored since the `.hex` file is what will be programmed into the target PIC[®] device.

MPLAB[®] Xpress Evaluation Board User's Guide

FIGURE 2-1: SELECTING THE Xpress EVALUATION BOARD IN THE MPLAB[®] X IDE

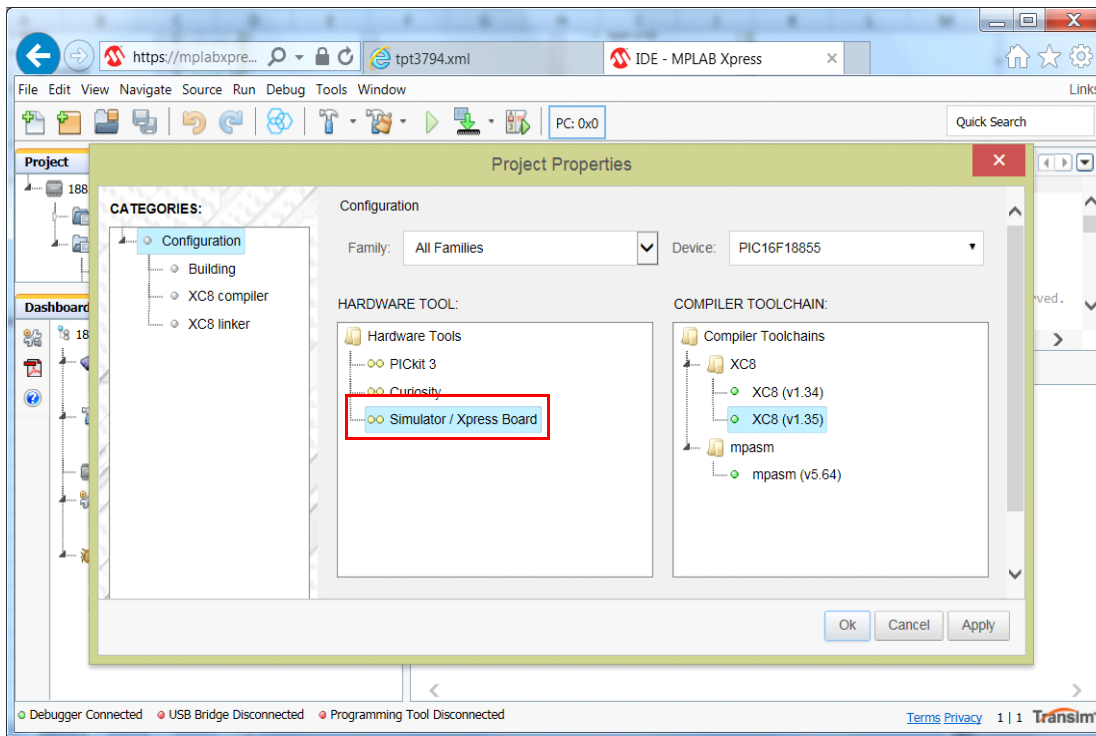
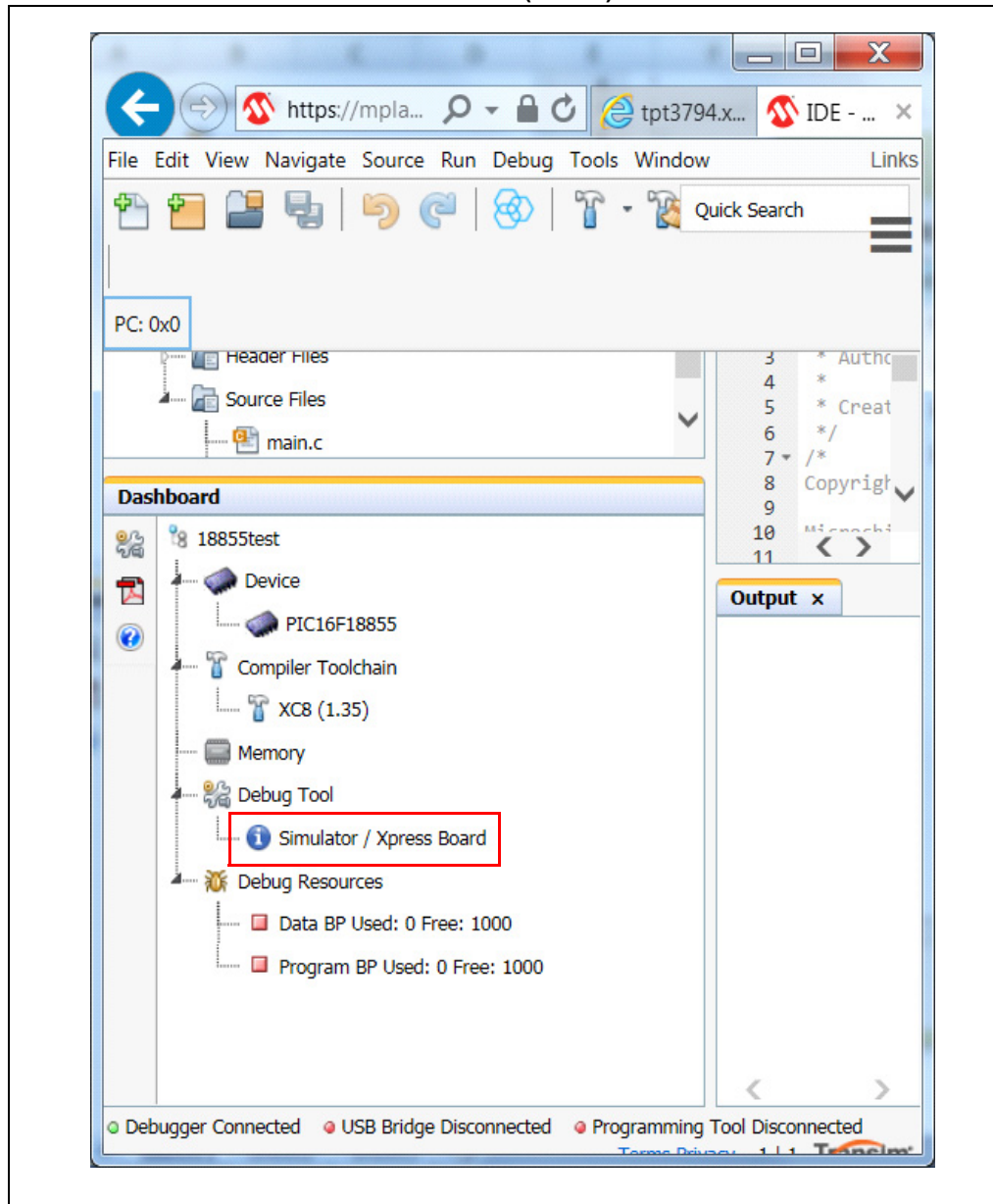
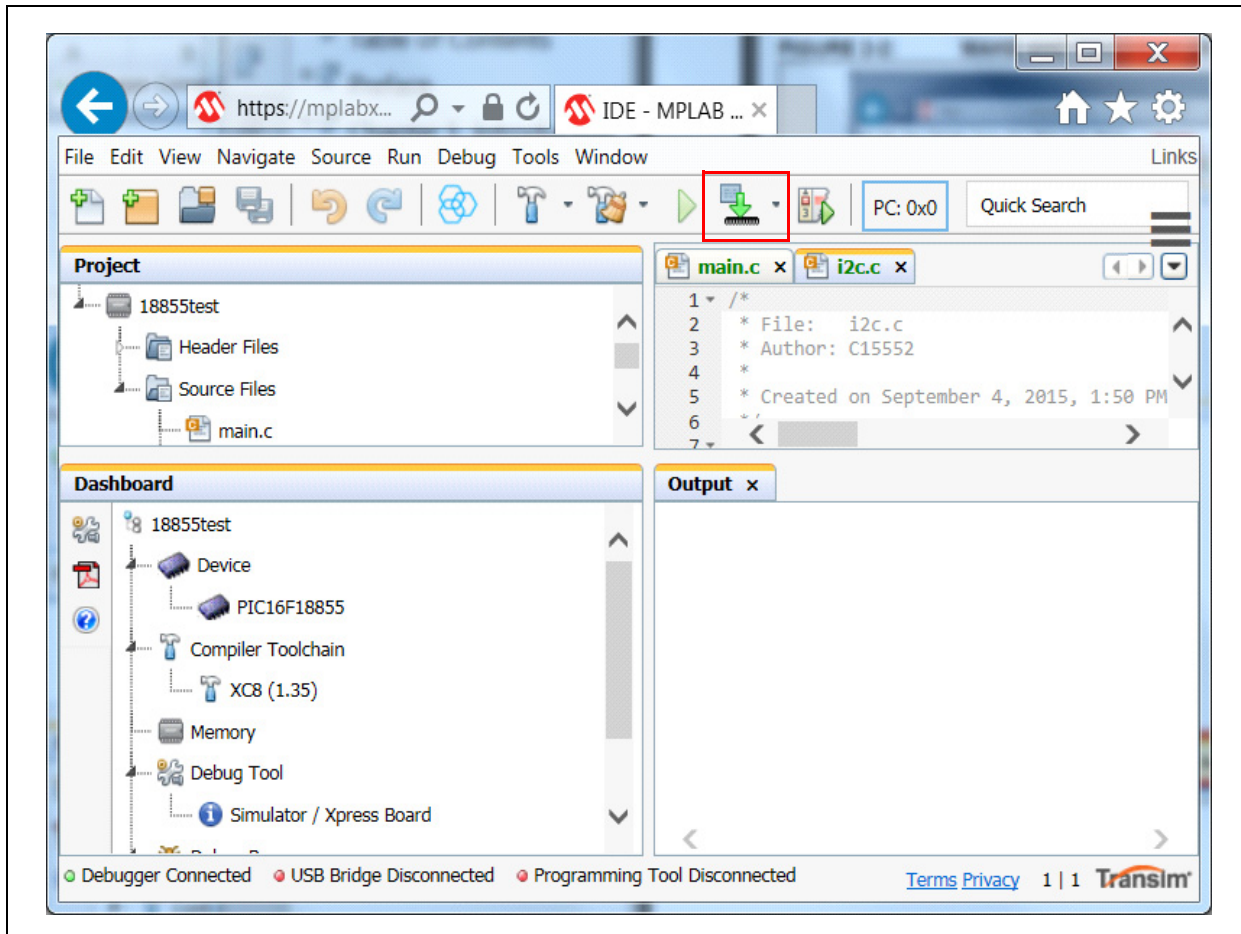


FIGURE 2-2: SELECTING THE XPRESS EVALUATION BOARD IN THE MPLAB® XPRESS IDE (CONT)



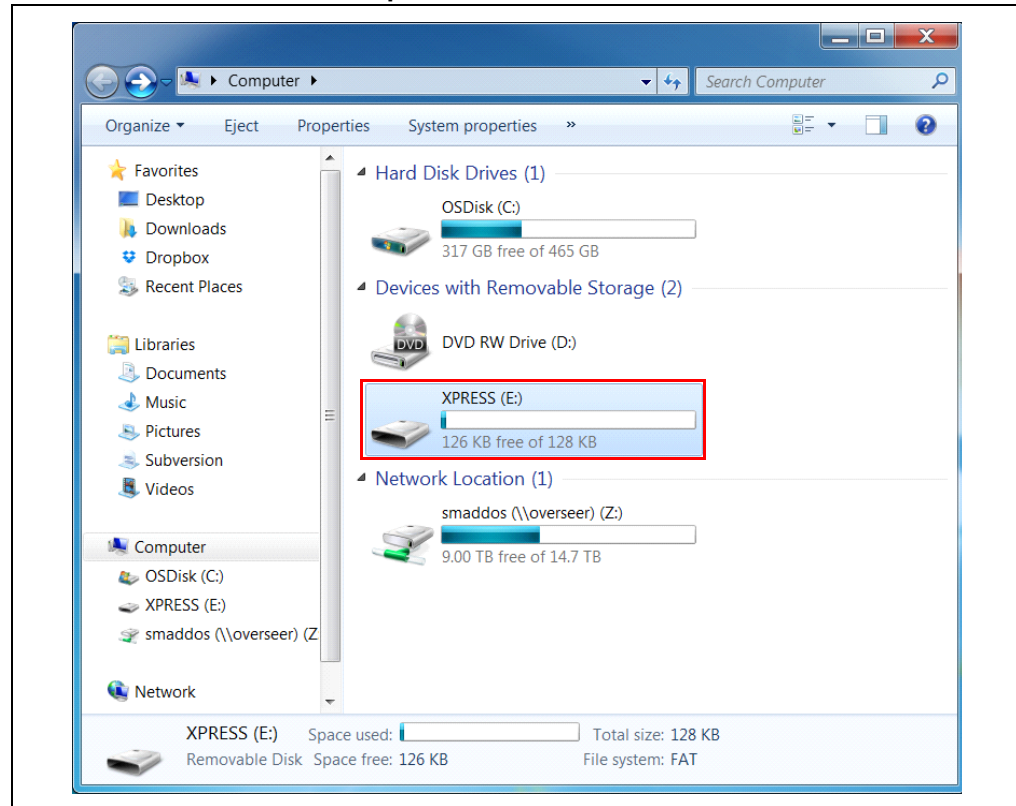
MPLAB[®] Xpress Evaluation Board User's Guide

FIGURE 2-3: MAKE AND PROGRAM DEVICE



The Xpress Evaluation Board will show as a mass storage device on the computer (see [Figure 2-4](#)). To program the device, simply drag and drop the `.hex` file image into the Xpress drive. The process is the same for Windows, Linux or OS X.

FIGURE 2-4: MPLAB® Xpress BOARD AS MASS STORAGE



2.2 PROGRAMMING XPRESS BOARD USING MPLAB® X

Xpress Boards can be programmed using MPLAB X by following the same steps as described in [Section 2.1 “Programming the MPLAB Xpress Evaluation Board”](#) for MPLAB Xpress. In addition to drag-and-drop, MPLAB X can run a post-build script to perform this action automatically. To set this up, right click on *Project Name* > *Properties* > *Building* and check the **Execute this line after build**. In the text box below it, type:

```
cp ${ImagePath} <Path to XPRESS>
```

Replace `<Path to XPRESS>` with the actual location where XPRESS board is mounted. For example, on Windows, if the XPRESS board is mounted at `D:\`, the script would look like:

```
cp ${ImagePath} D:\
```

For Mac OS X, if the XPRESS board is mounted at `/Volumes/XPRESS`, the script would look like:

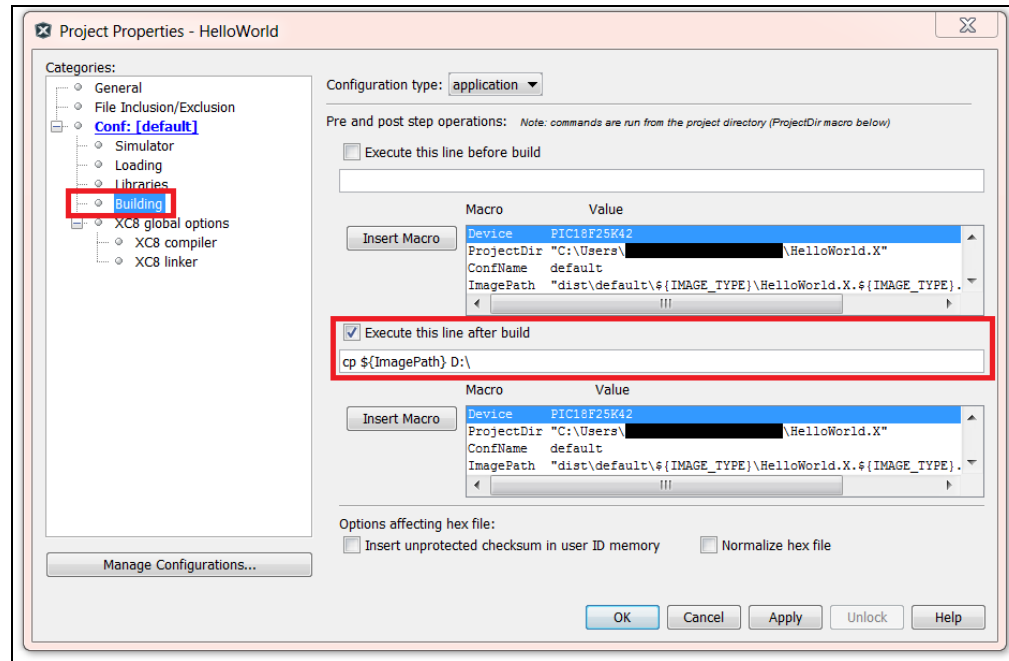
```
cp ${ImagePath} /Volumes/XPRESS
```

MPLAB[®] Xpress Evaluation Board User's Guide

For Linux, if the XPRESS board is mounted at /media/XPRESS, the script would look like:

```
cp ${ImagePath} /media/XPRESS
```

FIGURE 2-5: PROGRAMMING SETTINGS ON MPLAB[®] X

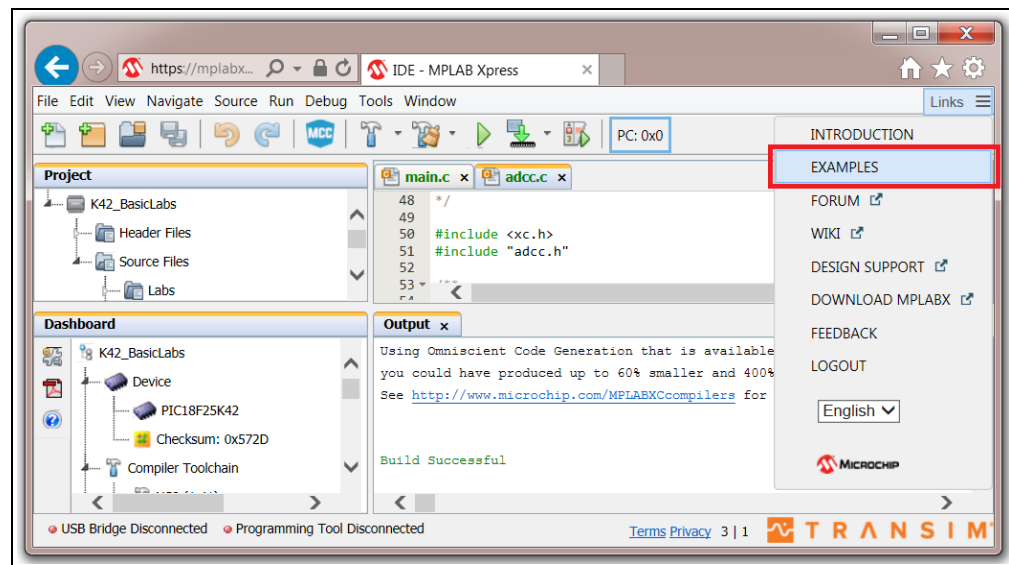


Click on **Apply** and **OK**. Next time when the **Make and Program Device** button is clicked, the `.hex` file will be copied over to the Xpress board automatically.

2.3 NAVIGATING XPRESS EXAMPLES

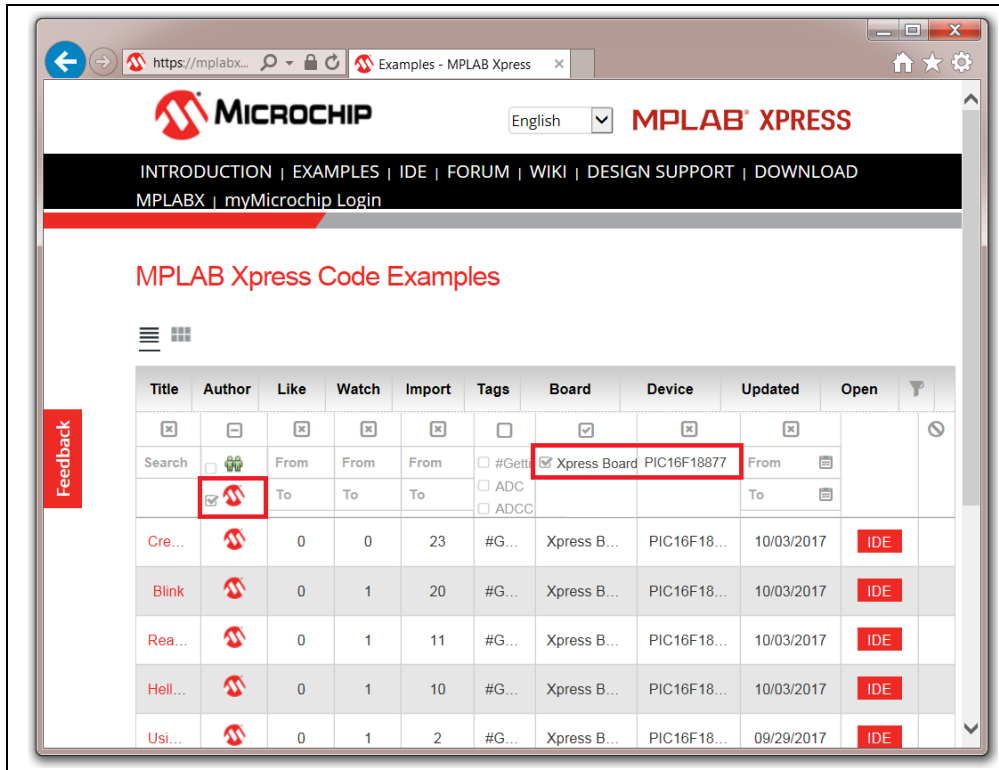
MPLAB Xpress comes with many examples that demonstrate how to use different peripherals for different devices. In order to navigate to the examples, on the top menu bar, click on the "Examples" link.

FIGURE 2-6: NAVIGATING TO XPRESS CODE EXAMPLES



The next window that opens up contains many MPLAB Xpress Code Examples. Filter the results based on Author, Board and Device. The code examples with the Microchip logo for author have been functionally tested and verified by Microchip Technology for that board and device. Click on the name of the example to read the description of the example. Click the red "IDE" button across the desired example to open them up in MPLAB Xpress IDE.

FIGURE 2-7: FILTERING AND OPENING CODE EXAMPLES

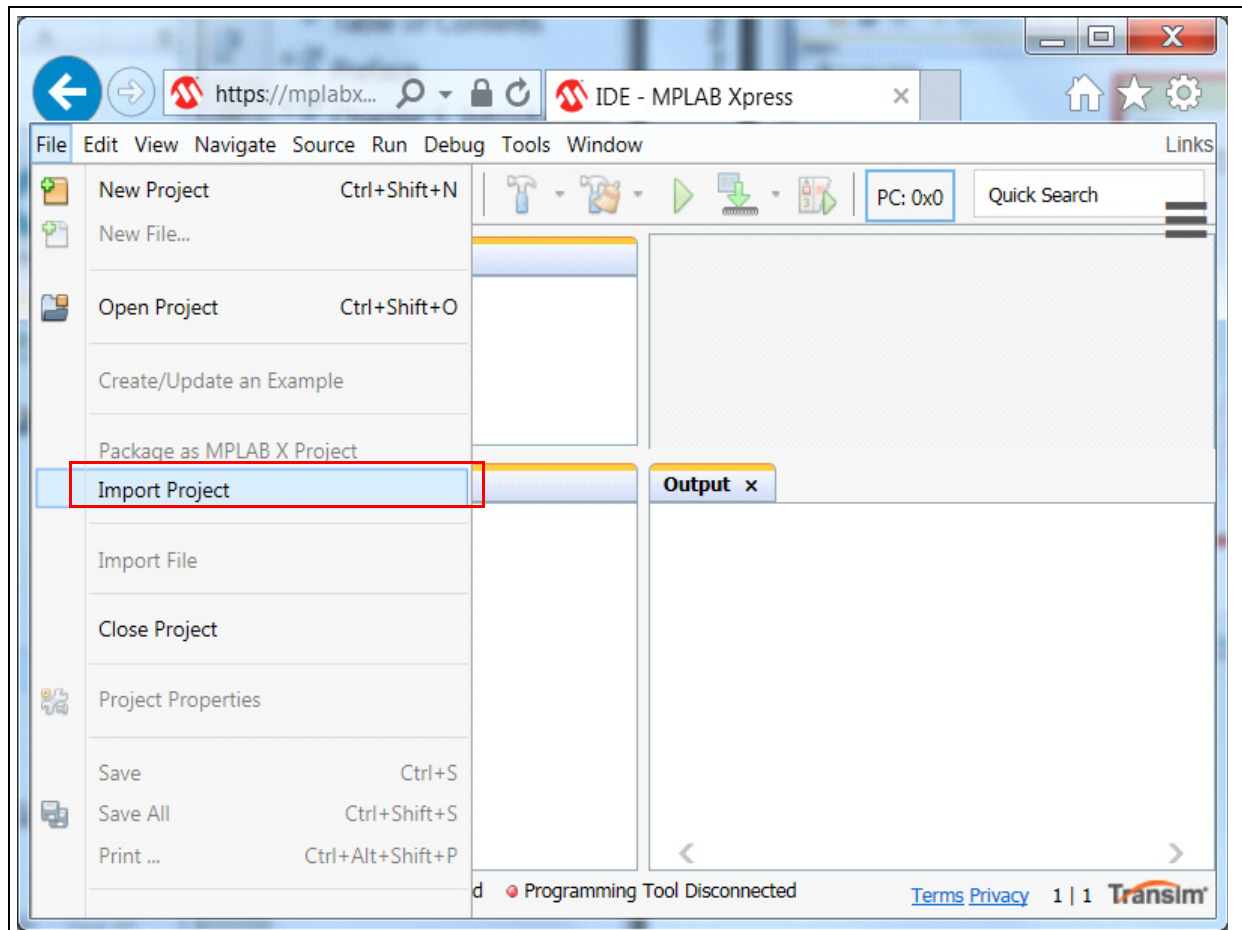


MPLAB® Xpress Evaluation Board User's Guide

2.4 USING AN EXISTING MPLAB® X IDE PROJECT

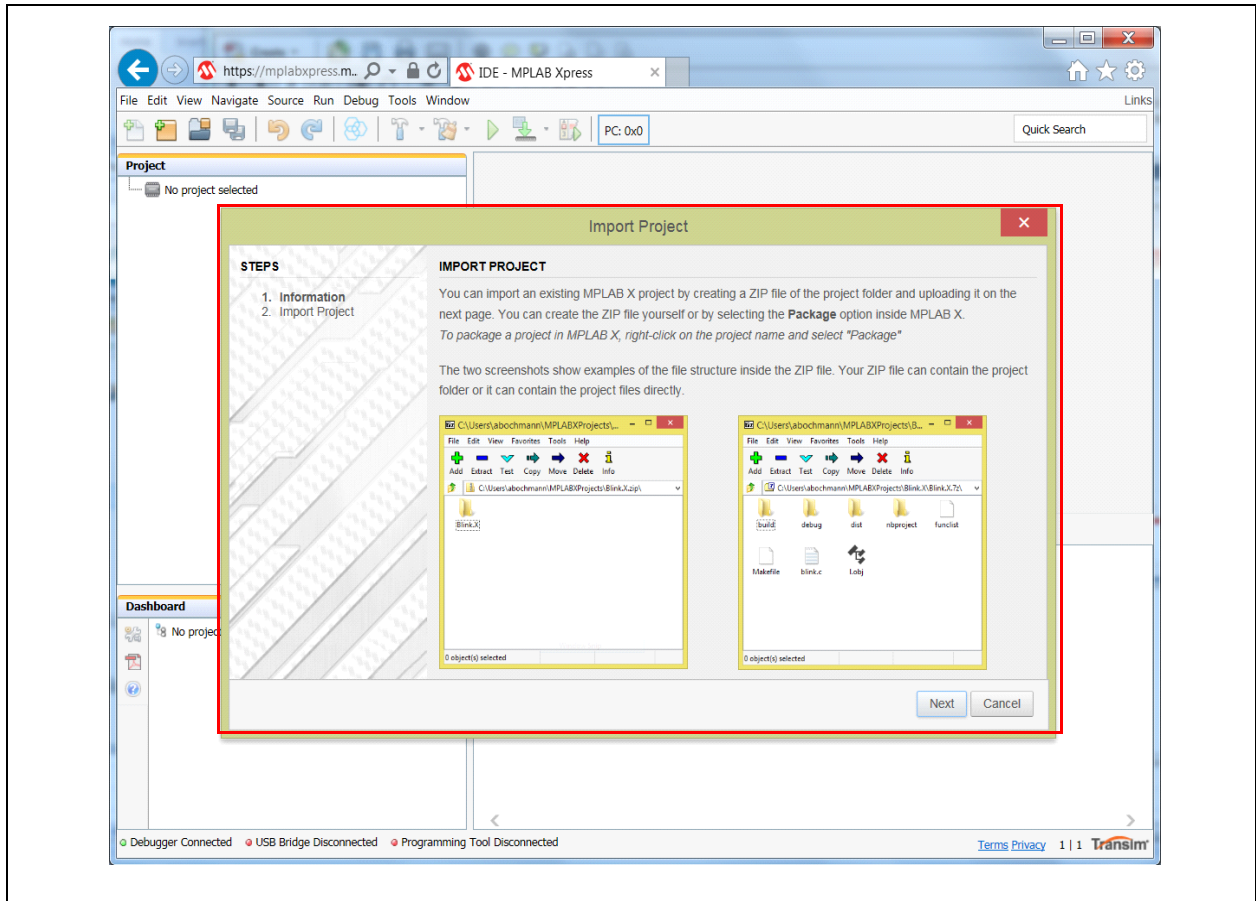
To load an existing MPLAB X IDE project into MPLAB Xpress, the MPLAB X IDE project must be packaged so that it can be imported by MPLAB Xpress. In MPLAB X IDE, right click on the project that is to be imported into MPLAB Xpress and select **Package**. MPLAB X IDE will create a ZIP file that will be imported by MPLAB Xpress. Open MPLAB Xpress and under the **File** tab, select **Import Project** (see [Figure 2-8](#)).

FIGURE 2-8: IMPORT EXISTING MPLAB® X IDE PROJECT



The Import Project window will appear (see [Figure 2-9](#)). The window also explains how to prepare your MPLAB X IDE project to import. Click **Next**.

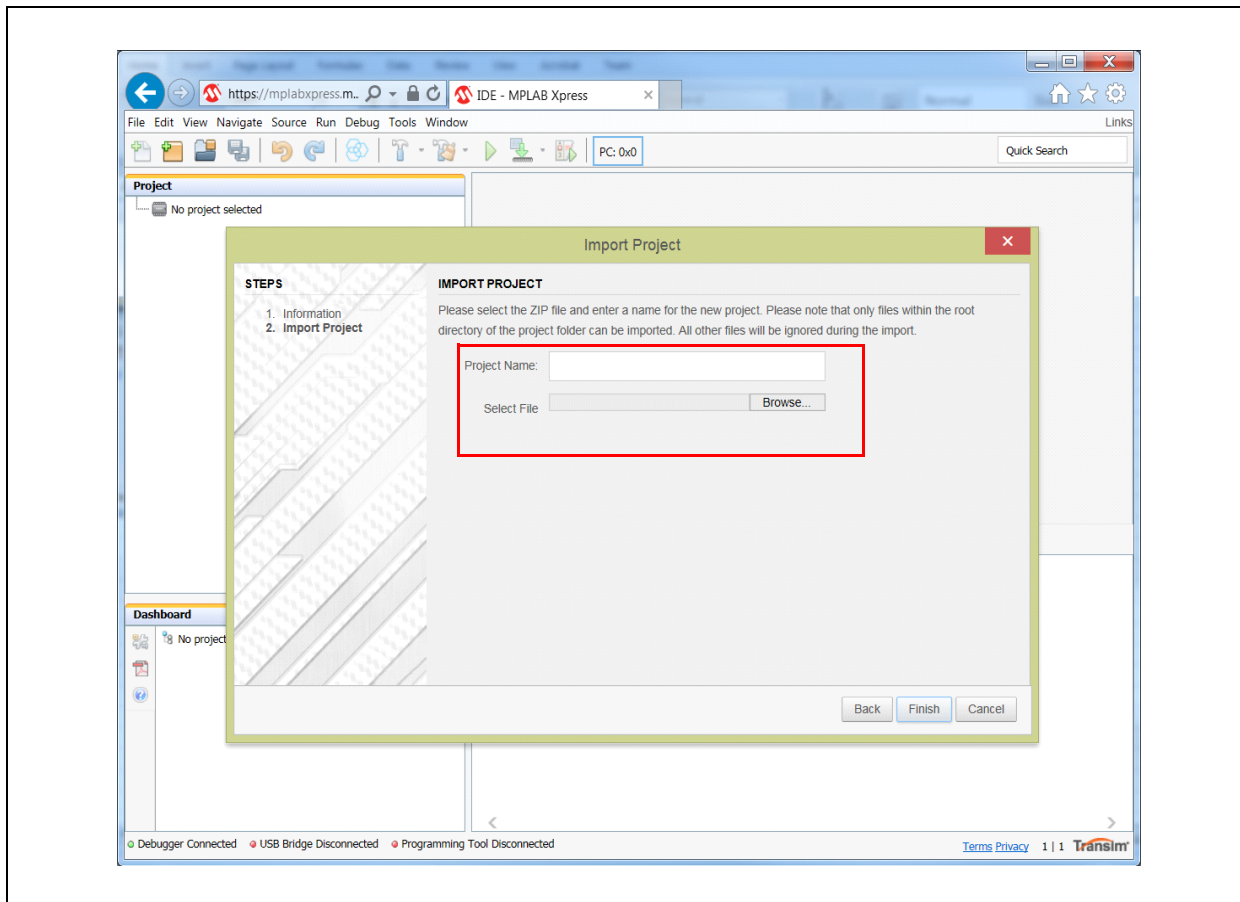
FIGURE 2-9: IMPORT PROJECT WINDOW



MPLAB[®] Xpress Evaluation Board User's Guide

The Import Project window will now ask for a project name and allow you to browse for your MPLAB X IDE project (see [Figure 2-10](#)). Add a name to your project and then navigate to the folder in which your ZIP file was stored. Select the ZIP file and click **Finish**. MPLAB Xpress will then open your ZIP file and load the necessary files.

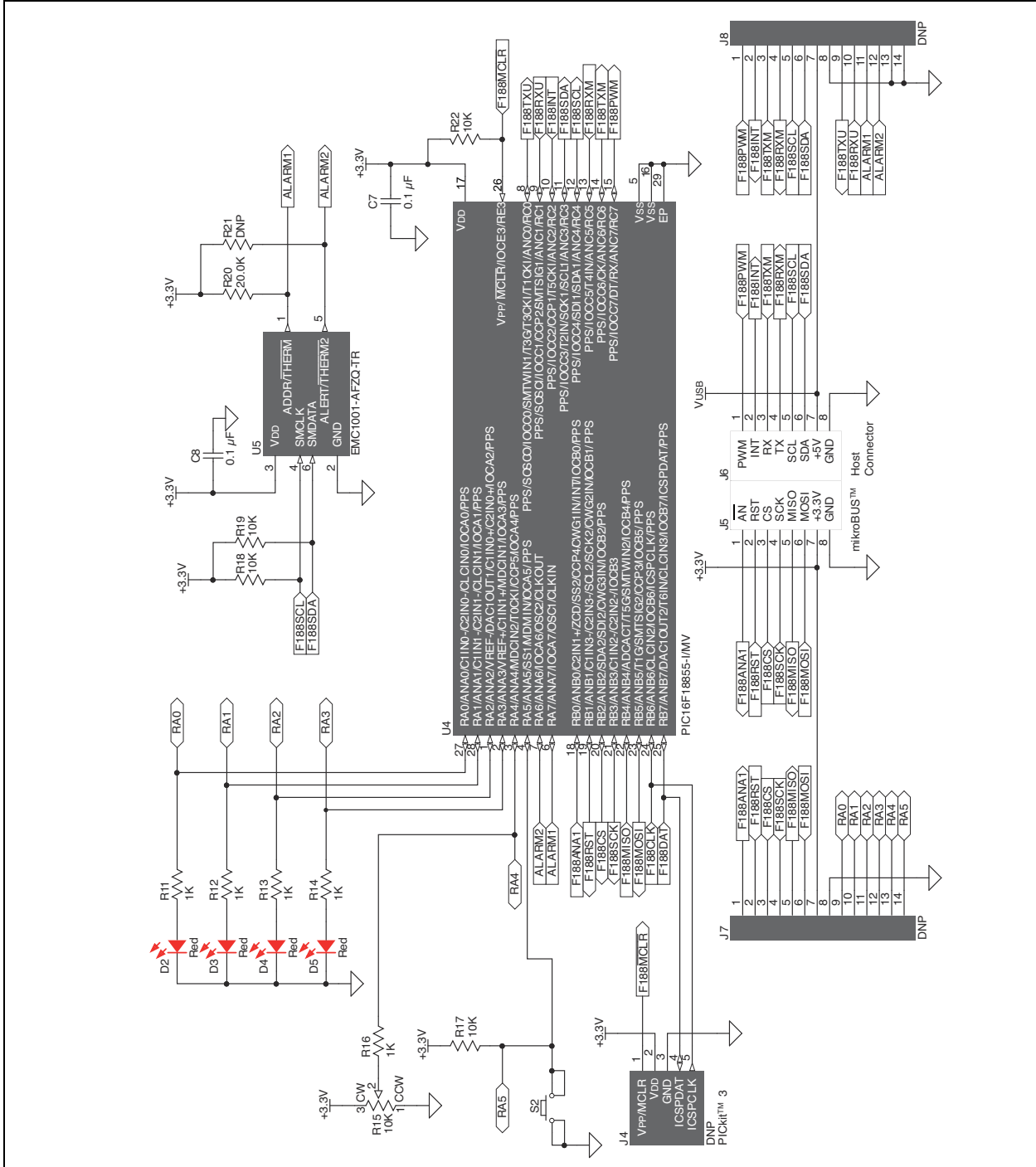
FIGURE 2-10: NAMING AND SELECTING MPLAB[®] X IDE PROJECT TO IMPORT



Appendix A. Schematic

A.1 MPLAB® Xpress EVALUATION BOARD SCHEMATIC

FIGURE A-1: MPLAB® Xpress GENERAL PURPOSE EVALUATION BOARD SCHEMATIC (APPLICATION SECTION)



MPLAB® Xpress Evaluation Board User's Guide

FIGURE A-2: MPLAB® Xpress GENERAL PURPOSE EVALUATION BOARD SCHEMATIC (PROGRAMMER SECTION)

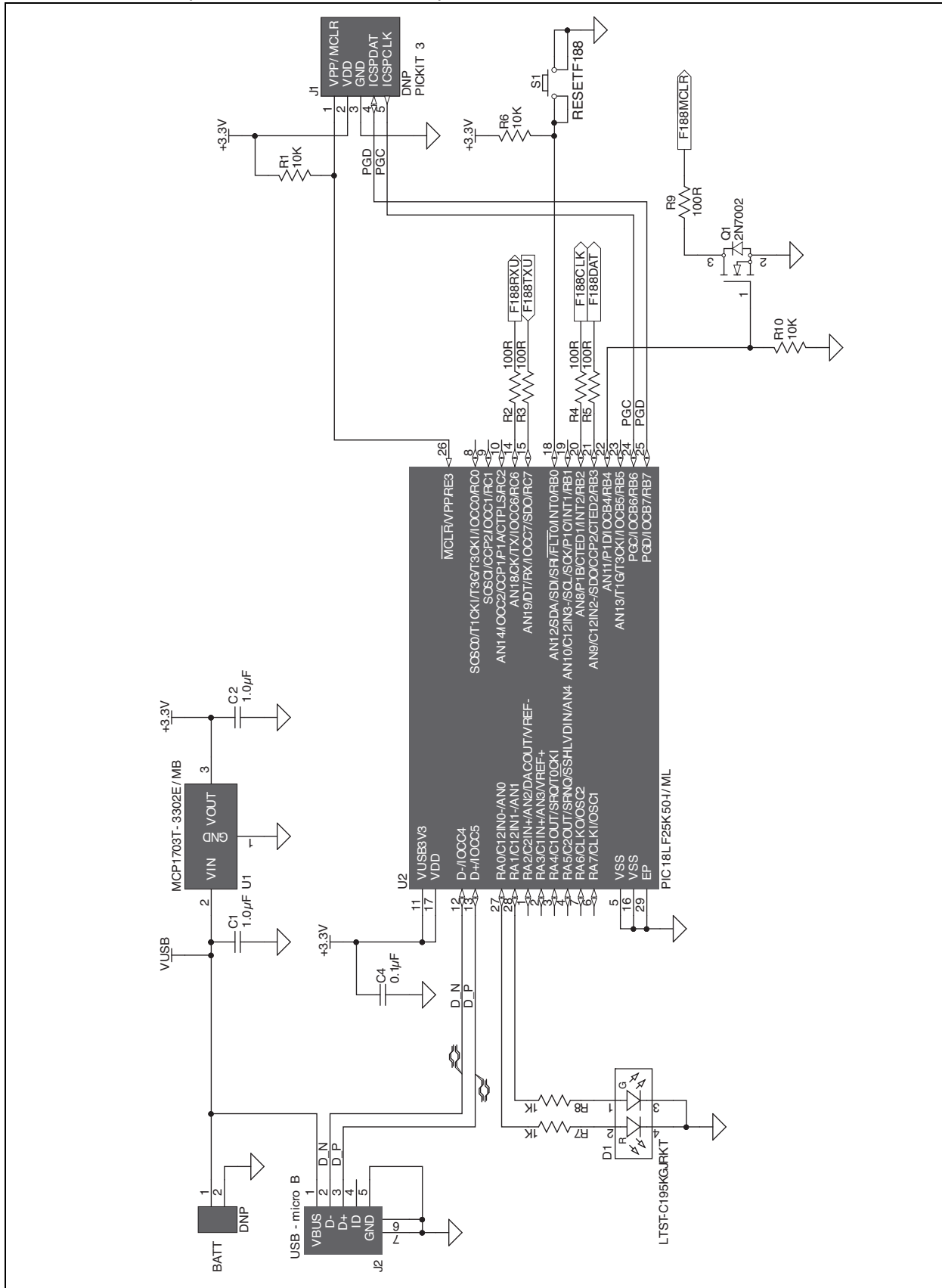
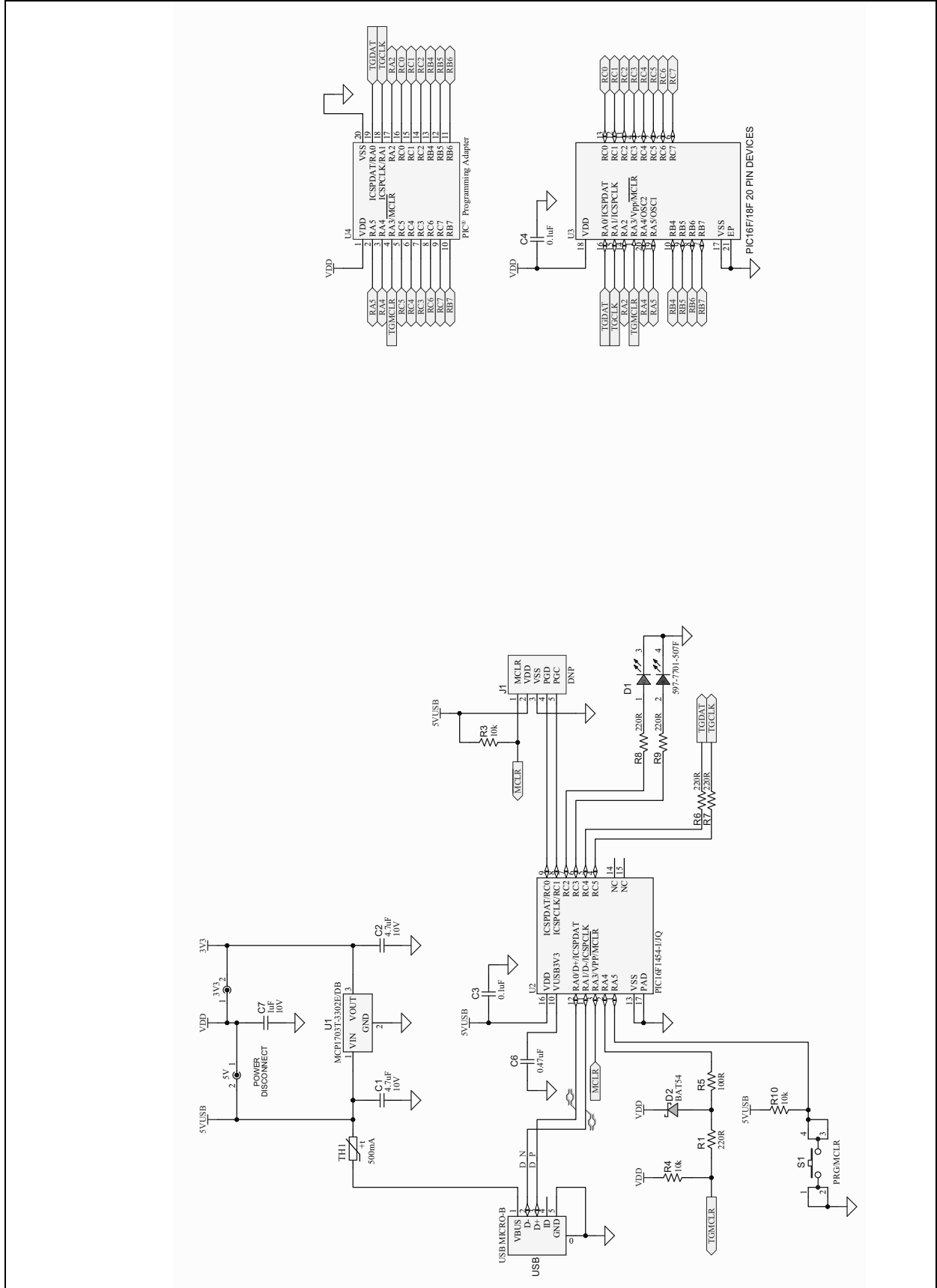


FIGURE A-3: MPLAB® Xpress 20-PIN DEVICE SPECIFIC EVALUATION BOARD SCHEMATIC



MPLAB® Xpress Evaluation Board User's Guide

FIGURE A-4: MPLAB® Xpress 28-PIN DEVICE SPECIFIC EVALUATION BOARD SCHEMATIC

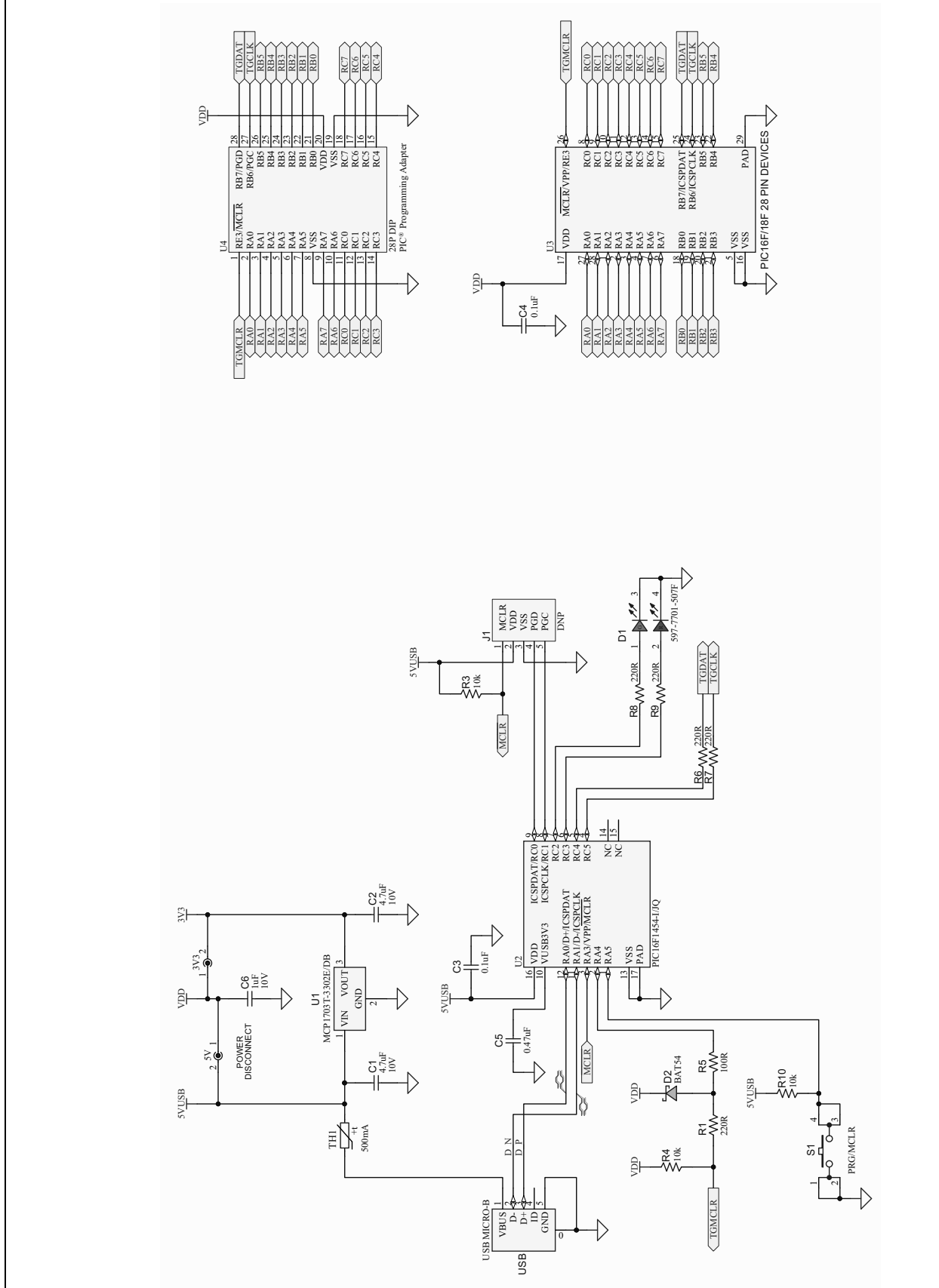
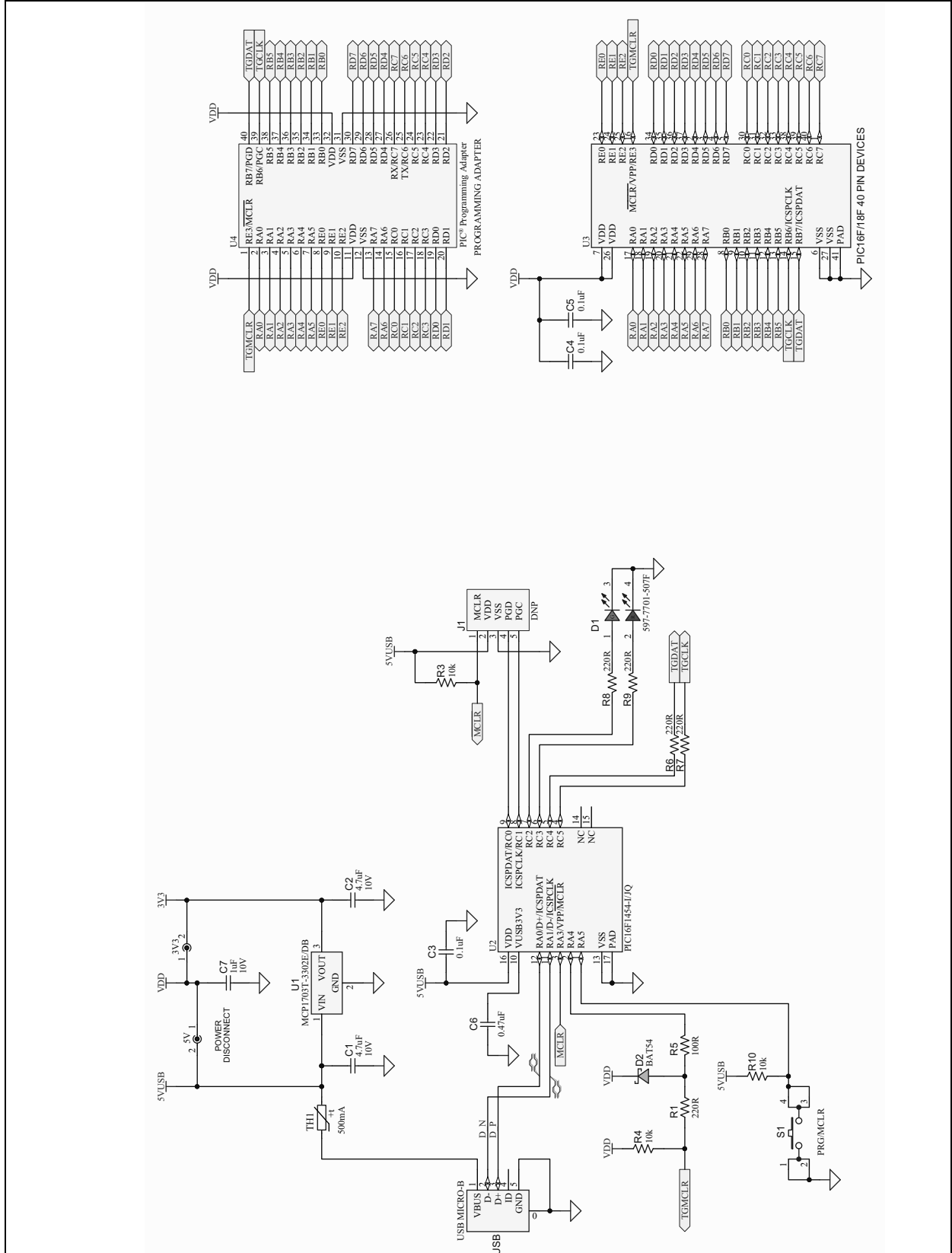


FIGURE A-5: MPLAB® Xpress 40-PIN DEVICE SPECIFIC EVALUATION BOARD SCHEMATIC



MPLAB[®] Xpress Evaluation Board User's Guide

NOTES:



MICROCHIP

Worldwide Sales and Service

AMERICAS

Corporate Office
2355 West Chandler Blvd.
Chandler, AZ 85224-6199
Tel: 480-792-7200
Fax: 480-792-7277
Technical Support:
<http://www.microchip.com/support>
Web Address:
www.microchip.com

Atlanta
Duluth, GA
Tel: 678-957-9614
Fax: 678-957-1455

Austin, TX
Tel: 512-257-3370

Boston
Westborough, MA
Tel: 774-760-0087
Fax: 774-760-0088

Chicago
Itasca, IL
Tel: 630-285-0071
Fax: 630-285-0075

Dallas
Addison, TX
Tel: 972-818-7423
Fax: 972-818-2924

Detroit
Novi, MI
Tel: 248-848-4000

Houston, TX
Tel: 281-894-5983

Indianapolis
Noblesville, IN
Tel: 317-773-8323
Fax: 317-773-5453
Tel: 317-536-2380

Los Angeles
Mission Viejo, CA
Tel: 949-462-9523
Fax: 949-462-9608
Tel: 951-273-7800

Raleigh, NC
Tel: 919-844-7510

New York, NY
Tel: 631-435-6000

San Jose, CA
Tel: 408-735-9110
Tel: 408-436-4270

Canada - Toronto
Tel: 905-695-1980
Fax: 905-695-2078

ASIA/PACIFIC

Asia Pacific Office
Suites 3707-14, 37th Floor
Tower 6, The Gateway
Harbour City, Kowloon

Hong Kong
Tel: 852-2943-5100
Fax: 852-2401-3431

Australia - Sydney
Tel: 61-2-9868-6733
Fax: 61-2-9868-6755

China - Beijing
Tel: 86-10-8569-7000
Fax: 86-10-8528-2104

China - Chengdu
Tel: 86-28-8665-5511
Fax: 86-28-8665-7889

China - Chongqing
Tel: 86-23-8980-9588
Fax: 86-23-8980-9500

China - Dongguan
Tel: 86-769-8702-9880

China - Guangzhou
Tel: 86-20-8755-8029

China - Hangzhou
Tel: 86-571-8792-8115
Fax: 86-571-8792-8116

China - Hong Kong SAR
Tel: 852-2943-5100
Fax: 852-2401-3431

China - Nanjing
Tel: 86-25-8473-2460
Fax: 86-25-8473-2470

China - Qingdao
Tel: 86-532-8502-7355
Fax: 86-532-8502-7205

China - Shanghai
Tel: 86-21-3326-8000
Fax: 86-21-3326-8021

China - Shenyang
Tel: 86-24-2334-2829
Fax: 86-24-2334-2393

China - Shenzhen
Tel: 86-755-8864-2200
Fax: 86-755-8203-1760

China - Wuhan
Tel: 86-27-5980-5300
Fax: 86-27-5980-5118

China - Xian
Tel: 86-29-8833-7252
Fax: 86-29-8833-7256

ASIA/PACIFIC

China - Xiamen
Tel: 86-592-2388138
Fax: 86-592-2388130

China - Zhuhai
Tel: 86-756-3210040
Fax: 86-756-3210049

India - Bangalore
Tel: 91-80-3090-4444
Fax: 91-80-3090-4123

India - New Delhi
Tel: 91-11-4160-8631
Fax: 91-11-4160-8632

India - Pune
Tel: 91-20-3019-1500

Japan - Osaka
Tel: 81-6-6152-7160
Fax: 81-6-6152-9310

Japan - Tokyo
Tel: 81-3-6880-3770
Fax: 81-3-6880-3771

Korea - Daegu
Tel: 82-53-744-4301
Fax: 82-53-744-4302

Korea - Seoul
Tel: 82-2-554-7200
Fax: 82-2-558-5932 or
82-2-558-5934

Malaysia - Kuala Lumpur
Tel: 60-3-6201-9857
Fax: 60-3-6201-9859

Malaysia - Penang
Tel: 60-4-227-8870
Fax: 60-4-227-4068

Philippines - Manila
Tel: 63-2-634-9065
Fax: 63-2-634-9069

Singapore
Tel: 65-6334-8870
Fax: 65-6334-8850

Taiwan - Hsin Chu
Tel: 886-3-5778-366
Fax: 886-3-5770-955

Taiwan - Kaohsiung
Tel: 886-7-213-7830

Taiwan - Taipei
Tel: 886-2-2508-8600
Fax: 886-2-2508-0102

Thailand - Bangkok
Tel: 66-2-694-1351
Fax: 66-2-694-1350

EUROPE

Austria - Wels
Tel: 43-7242-2244-39
Fax: 43-7242-2244-393

Denmark - Copenhagen
Tel: 45-4450-2828
Fax: 45-4485-2829

Finland - Espoo
Tel: 358-9-4520-820

France - Paris
Tel: 33-1-69-53-63-20
Fax: 33-1-69-30-90-79

Germany - Garching
Tel: 49-8931-9700

Germany - Haan
Tel: 49-2129-3766400

Germany - Heilbronn
Tel: 49-7131-67-3636

Germany - Karlsruhe
Tel: 49-721-625370

Germany - Munich
Tel: 49-89-627-144-0
Fax: 49-89-627-144-44

Germany - Rosenheim
Tel: 49-8031-354-560

Israel - Ra'anana
Tel: 972-9-744-7705

Italy - Milan
Tel: 39-0331-742611
Fax: 39-0331-466781

Italy - Padova
Tel: 39-049-7625286

Netherlands - Drunen
Tel: 31-416-690399
Fax: 31-416-690340

Norway - Trondheim
Tel: 47-7289-7561

Poland - Warsaw
Tel: 48-22-3325737

Romania - Bucharest
Tel: 40-21-407-87-50

Spain - Madrid
Tel: 34-91-708-08-90
Fax: 34-91-708-08-91

Sweden - Gothenberg
Tel: 46-31-704-60-40

Sweden - Stockholm
Tel: 46-8-5090-4654

UK - Wokingham
Tel: 44-118-921-5800
Fax: 44-118-921-5820

Mouser Electronics

Authorized Distributor

Click to View Pricing, Inventory, Delivery & Lifecycle Information:

[Microchip:](#)

[DM164140](#) [DM164141](#) [DM164142](#)